

# Steese Expressway / Johansen Expressway Interchange

Project No. Z607320000/0002337

## Welcome

### Steese Expressway/Johansen Expressway Interchange Public Meeting

### Meeting Purpose

To share information regarding the project design and discuss the project's next steps.

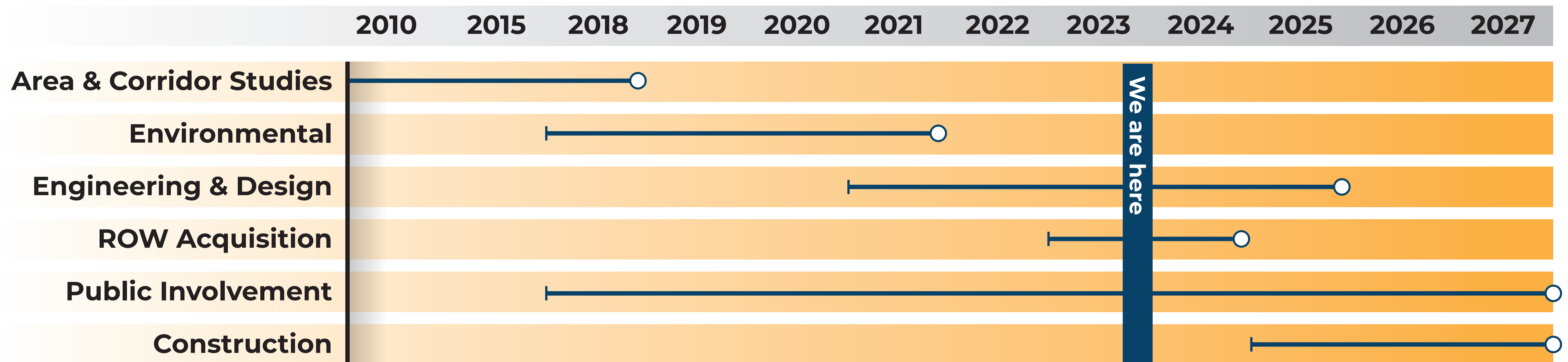


# Steese Expressway / Johansen Expressway Interchange

Project No. Z607320000/0002337

## Project Schedule and Funding

The preferred alternative was selected, completing the environmental document in 2021. The team kicked off the right-of-way phase in 2023, contacting affected owners and working on appraisals. We are continuing to progress the design and are working with a Contractor to develop a construction phasing plan. Construction is not anticipated to start before 2025 and will likely last 3 seasons.



# Steese Expressway / Johansen Expressway Interchange

Project No. Z607320000/0002337

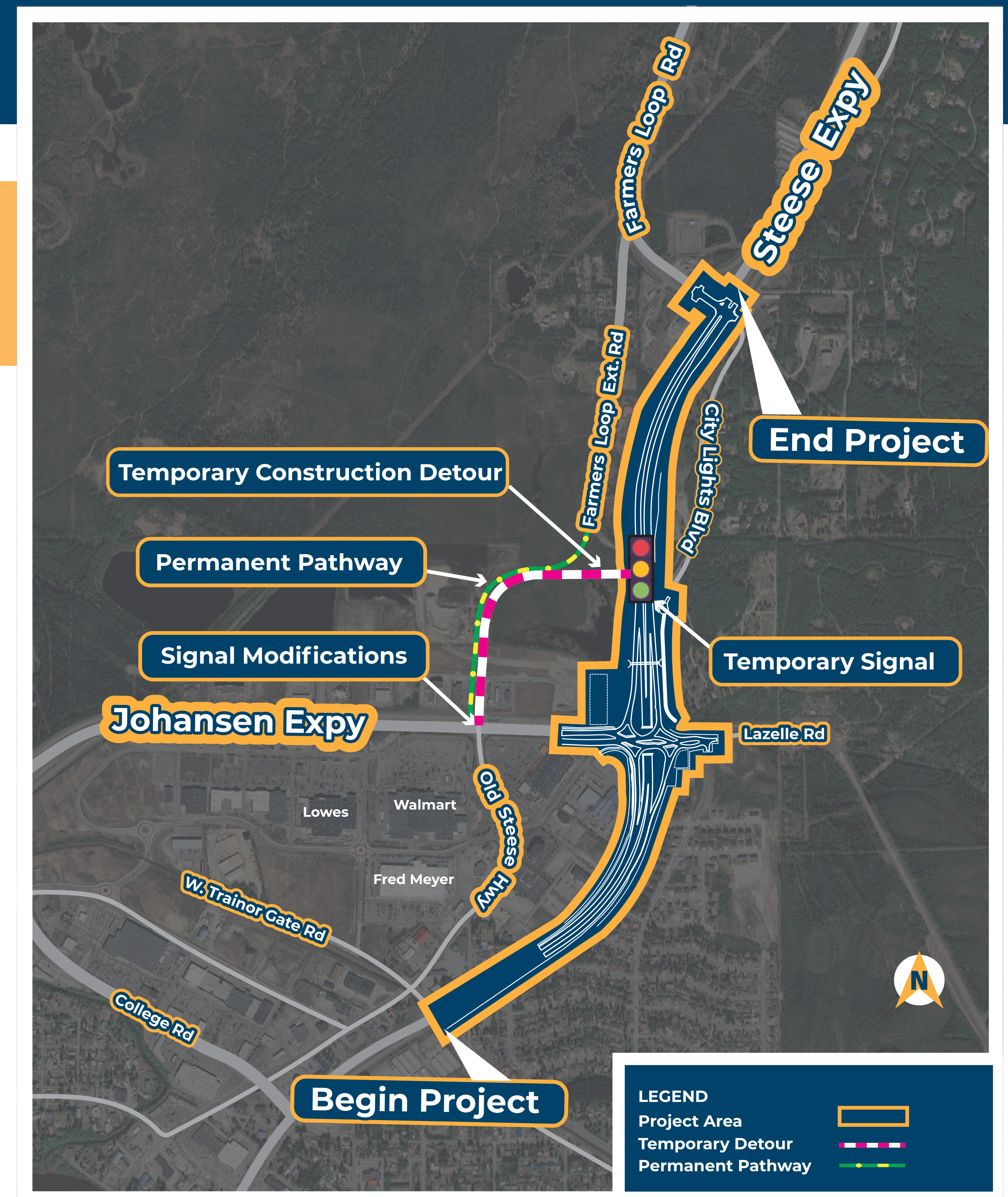
## Purpose & Need

### Purpose:

Enhance motorized and non-motorized mobility and user safety at the Steese/Johansen Expressway intersection and within the influence area of the intersection.

### Need:

- Excessive delay
- High-profile pedestrian/bicycle crashes between 2005 and 2014
- Critical node for commercial traffic heading to the North Slope



# Steese Expressway / Johansen Expressway Interchange

Project No. Z607320000/0002337

## Preferred Build Alternative

The Diverging Diamond Interchange (DDI) with temporary Farmers Loop Connection is the Preferred Build Alternative. The DDI remains the most efficient and safe alternative for managing traffic while minimizing project impacts on private property.

It will:

- Significantly decrease delay at the existing Steese/Johansen intersection.
- Provide an enhanced bicycle/pedestrian connection between the existing separated pathways on the Johansen Expressway and Farmers Loop Road.
- Provide a bypass route during construction to manage traffic.



# Steese Expressway / Johansen Expressway Interchange

Project No. Z607320000/0002337

## Steese Expy – Southbound Movement



# Steese Expressway / Johansen Expressway Interchange

Project No. Z607320000/0002337

## Johansen Expy – Eastbound Left to Northbound Movement



# Steese Expressway / Johansen Expressway Interchange

Project No. Z607320000/0002337

## Johansen Expy – Westbound Through Movement

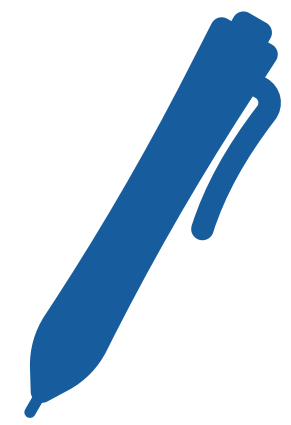


# Steese Expressway / Johansen Expressway Interchange

Project No. Z607320000/0002337

## Submit Comments/ Get More Information

Fill out a comment sheet today!



### For more information:

**Jennifer Wright, P.E.**

DOT&PF  
2301 Peger Rd  
Fairbanks, AK 99709-5316



(907) 371-8949



[jennifer.wright@alaska.gov](mailto:jennifer.wright@alaska.gov)

For individuals requiring TTY communications, please contact Alaska Relay at **711** or **1-800-770-8973**.

Visit the website: [dot.alaska.gov/nreg/steese-johansen/](http://dot.alaska.gov/nreg/steese-johansen/)

Scan to access with  
your smartphone



### Know Before You Go

[www.511.alaska.gov](http://www.511.alaska.gov) for road conditions