

- | | | | |
|--------|--|----------------------------|-------------------------------|
| Stream | Mile Post Points | Existing Streams | Cut (Enhanced) |
| PEM1B | <i>*Darker wetland colors show impacted wetlands. Lighter wetland colors show the extent of wetlands mapped within the 2006 study area. Reference EA acronym list for NWI types.</i> | Existing Slough / Drainage | Grade Control |
| PEM1H | | Proposed New Stream | Protected Vegetation |
| PFO1C | | Stream Impacts | Revegetation (Enhanced) |
| PSS1B | | Abandoned Culvert | Egg Incubation Box |
| PSS1E | | Extended Culvert | Proposed New Culvert Crossing |
| PSS1H | | Upgraded Fish Culvert | Rootwads |
| R3OW | | Upgraded Debris Culvert | |
| Upland | | Fish Passage Culverts | |

**WETLAND IMPACTS
AND
PROPOSED STREAM MITIGATION**

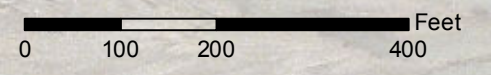
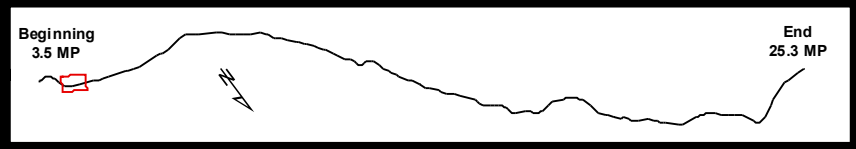
TS 28/29/30 S, R 56/57/58/59 E,
Copper River Meridian, Alaska



STATE OF ALASKA
DEPARTMENT OF TRANSPORTATION
AND PUBLIC FACILITIES
DOT & PF Project No. 68606
HAINES HIGHWAY
MILEPOST 3.5 - 25.3
Haines, Alaska

DATE: April 26, 2013

Figure Set C (01 OF 34)



- | | | | |
|--------|--|----------------------------|-------------------------------|
| Stream | Cut & Fill Limits | Existing Streams | Cut (Enhanced) |
| PEM1B | Mile Post Points | Existing Slough / Drainage | Grade Control |
| PEM1H | <i>*Darker wetland colors show impacted wetlands. Lighter wetland colors show the extent of wetlands mapped within the 2006 study area. Reference EA acronym list for NWI types.</i> | Proposed New Stream | Protected Vegetation |
| PFO1C | | Stream Impacts | Revegetation (Enhanced) |
| PSS1B | | Abandoned Culvert | Egg Incubation Box |
| PSS1E | | Extended Culvert | Proposed New Culvert Crossing |
| PSS1H | | Upgraded Fish Culvert | Rootwads |
| R3OW | | Upgraded Debris Culvert | |
| Upland | | Fish Passage Culverts | |

WETLAND IMPACTS AND PROPOSED STREAM MITIGATION

TS 28/29/30 S, R 56/57/58/59 E,
Copper River Meridian, Alaska

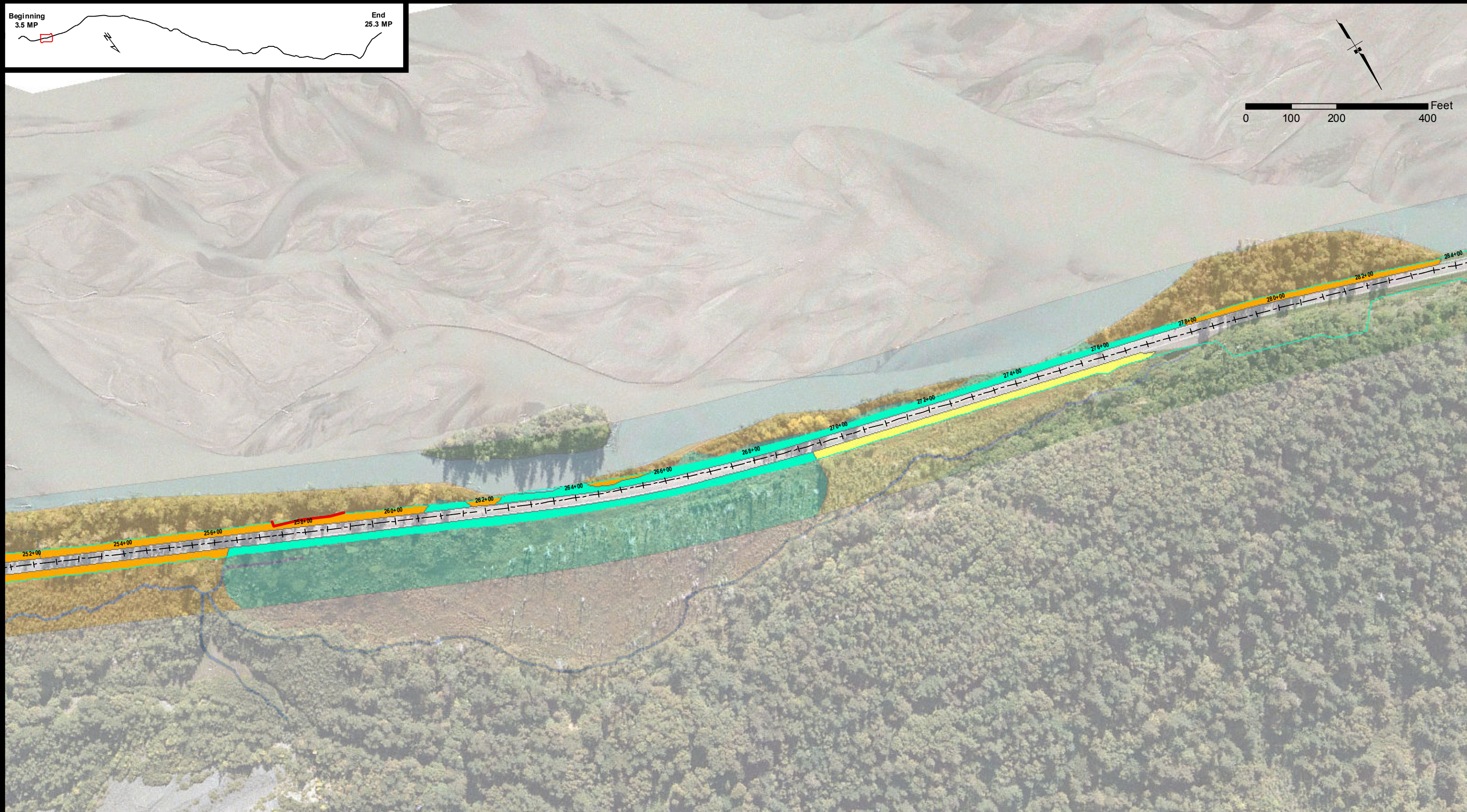
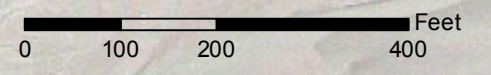
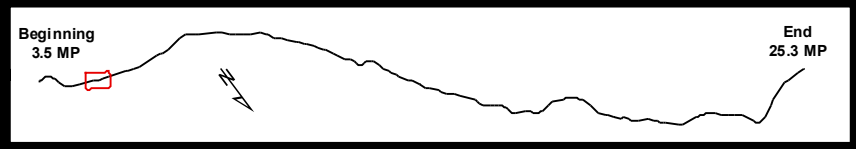


STATE OF ALASKA
DEPARTMENT OF TRANSPORTATION
AND PUBLIC FACILITIES
DOT & PF Project No. 68606
HAINES HIGHWAY
MILEPOST 3.5 - 25.3

Haines, Alaska

DATE: April 26, 2013

Figure Set C (02 OF 34)



- | | | | |
|--------|--|----------------------------|-------------------------------|
| Stream | Mile Post Points | Existing Streams | Cut (Enhanced) |
| PEM1B | <i>*Darker wetland colors show impacted wetlands. Lighter wetland colors show the extent of wetlands mapped within the 2006 study area. Reference EA acronym list for NWI types.</i> | Existing Slough / Drainage | Grade Control |
| PEM1H | | Proposed New Stream | Protected Vegetation |
| PFO1C | | Stream Impacts | Revegetation (Enhanced) |
| PSS1B | | Abandoned Culvert | Egg Incubation Box |
| PSS1E | | Extended Culvert | Proposed New Culvert Crossing |
| PSS1H | | Upgraded Fish Culvert | Rootwads |
| R3OW | | Upgraded Debris Culvert | |
| Upland | | Fish Passage Culverts | |

WETLAND IMPACTS AND PROPOSED STREAM MITIGATION

TS 28/29/30 S, R 56/57/58/59 E,
Copper River Meridian, Alaska

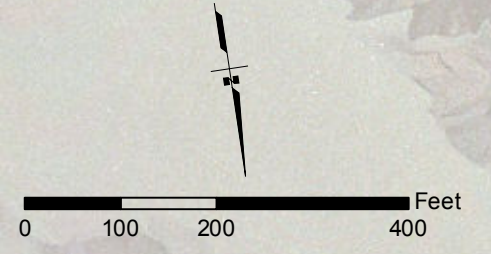
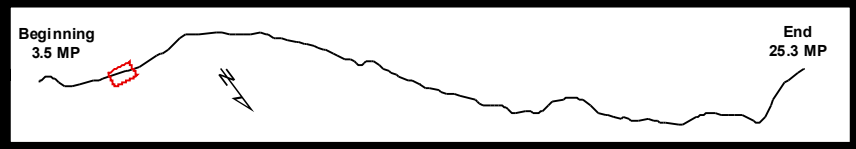


STATE OF ALASKA
DEPARTMENT OF TRANSPORTATION
AND PUBLIC FACILITIES
DOT & PF Project No. 68606
HAINES HIGHWAY
MILEPOST 3.5 - 25.3

Haines, Alaska

DATE: April 26, 2013

Figure Set C (03 OF 34)



- | | | | |
|--------|--|----------------------------|-------------------------------|
| Stream | Mile Post Points | Existing Streams | Cut (Enhanced) |
| PEM1B | <i>*Darker wetland colors show impacted wetlands. Lighter wetland colors show the extent of wetlands mapped within the 2006 study area. Reference EA acronym list for NWI types.</i> | Existing Slough / Drainage | Grade Control |
| PEM1H | | Proposed New Stream | Protected Vegetation |
| PFO1C | | Stream Impacts | Revegetation (Enhanced) |
| PSS1B | | Abandoned Culvert | Egg Incubation Box |
| PSS1E | | Extended Culvert | Proposed New Culvert Crossing |
| PSS1H | | Upgraded Fish Culvert | Rootwads |
| R3OW | | Upgraded Debris Culvert | |
| Upland | | Fish Passage Culverts | |

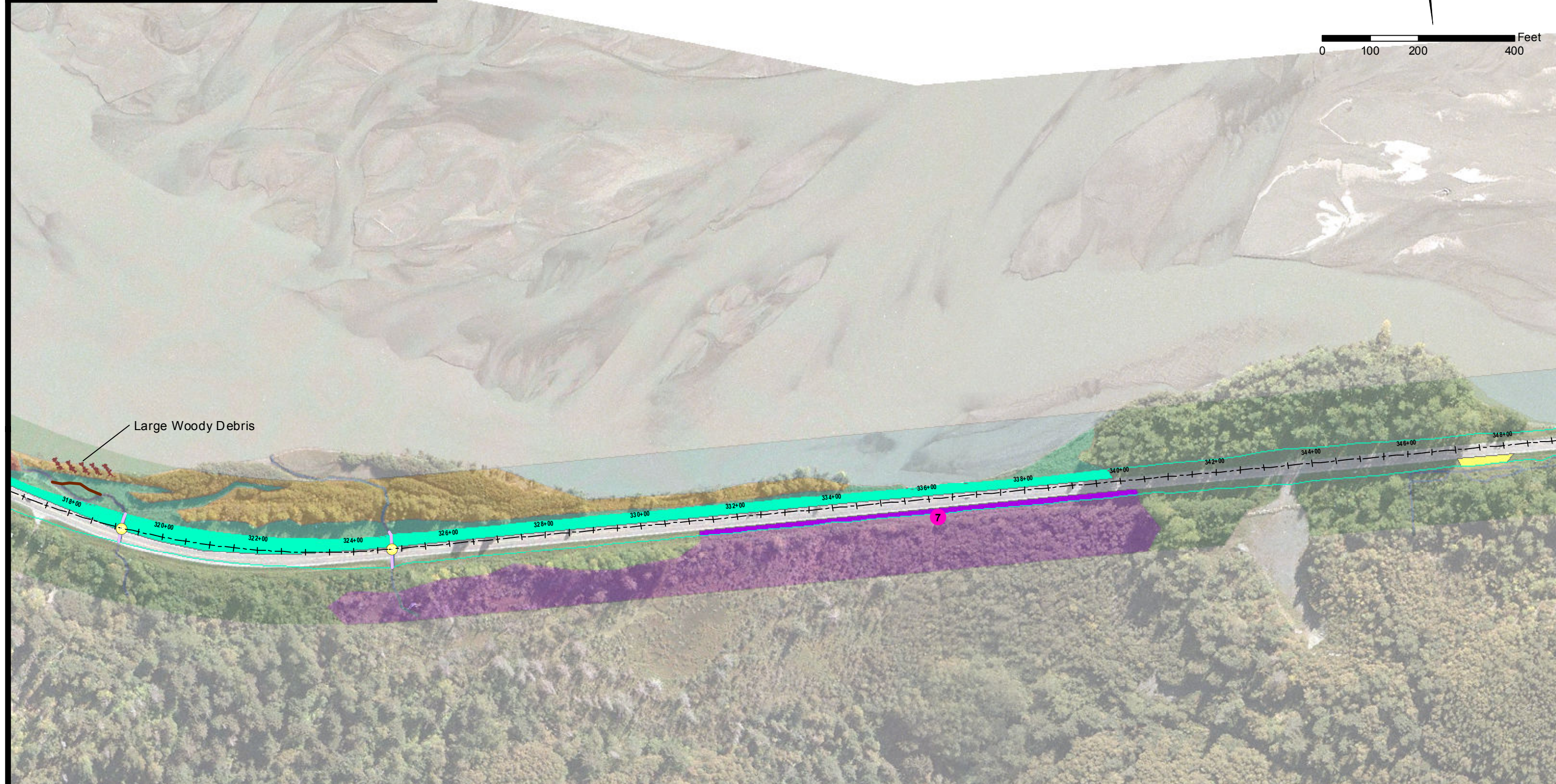
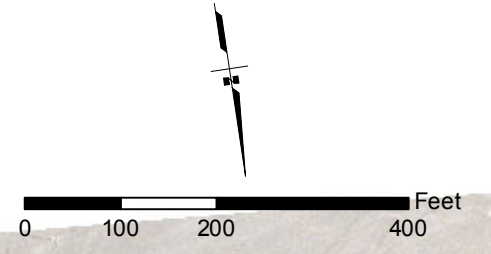
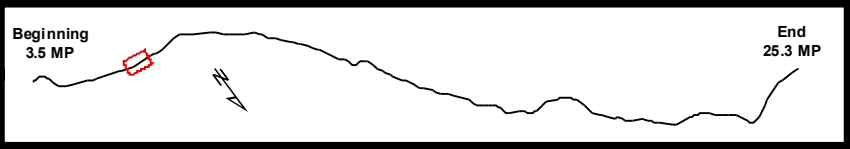
**WETLAND IMPACTS
AND
PROPOSED STREAM MITIGATION**

TS 28/29/30 S, R 56/57/58/59 E,
Copper River Meridian, Alaska



STATE OF ALASKA
DEPARTMENT OF TRANSPORTATION
AND PUBLIC FACILITIES
DOT & PF Project No. 68606
HAINES HIGHWAY
MILEPOST 3.5 - 25.3
Haines, Alaska

DATE: April 26, 2013 Figure Set C (04 OF 34)



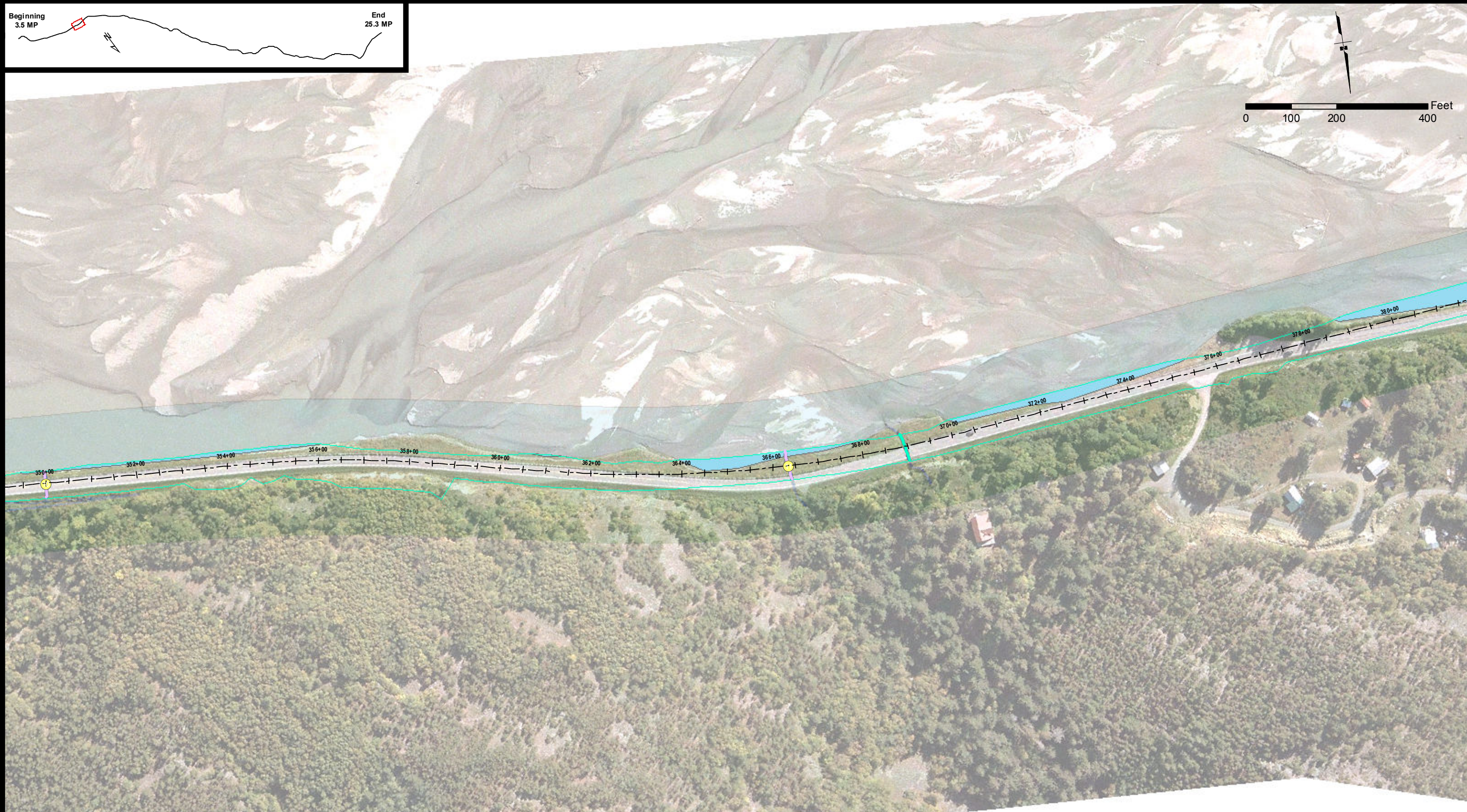
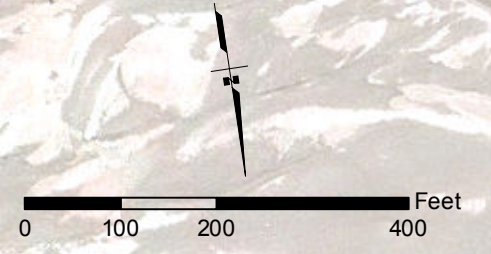
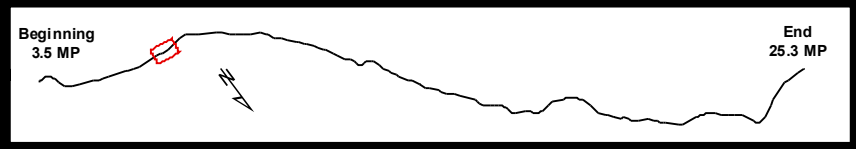
Stream	Mile Post Points	Existing Streams	Cut (Enhanced)
PEM1B	<i>*Darker wetland colors show impacted wetlands. Lighter wetland colors show the extent of wetlands mapped within the 2006 study area. Reference EA acronym list for NWI types.</i>	Existing Slough / Drainage	Grade Control
PEM1H		Proposed New Stream	Protected Vegetation
PFO1C		Stream Impacts	Revegetation (Enhanced)
PSS1B		Abandoned Culvert	Egg Incubation Box
PSS1E		Extended Culvert	Proposed New Culvert Crossing
PSS1H		Upgraded Fish Culvert	Rootwads
R3OW		Upgraded Debris Culvert	
Upland		Fish Passage Culverts	

**WETLAND IMPACTS
AND
PROPOSED STREAM MITIGATION**

TS 28/29/30 S, R 56/57/58/59 E,
Copper River Meridian, Alaska



STATE OF ALASKA DEPARTMENT OF TRANSPORTATION AND PUBLIC FACILITIES DOT & PF Project No. 68606 HAINES HIGHWAY MILEPOST 3.5 - 25.3 Haines, Alaska	
DATE: April 26, 2013	Figure Set C (05 OF 34)



- | | | | |
|--------|--|----------------------------|-------------------------------|
| Stream | Mile Post Points | Existing Streams | Cut (Enhanced) |
| PEM1B | <i>*Darker wetland colors show impacted wetlands. Lighter wetland colors show the extent of wetlands mapped within the 2006 study area. Reference EA acronym list for NWI types.</i> | Existing Slough / Drainage | Grade Control |
| PEM1H | | Proposed New Stream | Protected Vegetation |
| PFO1C | | Stream Impacts | Revegetation (Enhanced) |
| PSS1B | | Abandoned Culvert | Egg Incubation Box |
| PSS1E | | Extended Culvert | Proposed New Culvert Crossing |
| PSS1H | | Upgraded Fish Culvert | Rootwads |
| R3OW | | Upgraded Debris Culvert | |
| Upland | | Fish Passage Culverts | |

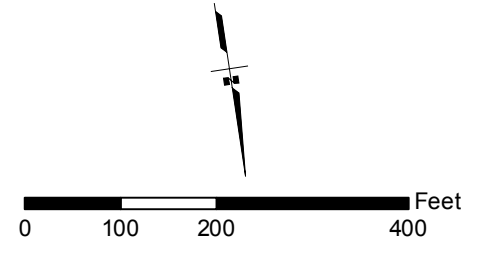
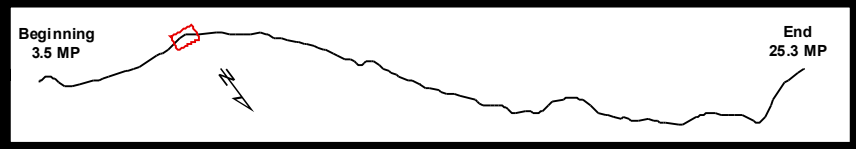
**WETLAND IMPACTS
AND
PROPOSED STREAM MITIGATION**

TS 28/29/30 S, R 56/57/58/59 E,
Copper River Meridian, Alaska



STATE OF ALASKA
DEPARTMENT OF TRANSPORTATION
AND PUBLIC FACILITIES
DOT & PF Project No. 68606
HAINES HIGHWAY
MILEPOST 3.5 - 25.3
Haines, Alaska

DATE: April 26, 2013 Figure Set C (06 OF 34)



- | | | | |
|--------|--|----------------------------|-------------------------------|
| Stream | Mile Post Points | Existing Streams | Cut (Enhanced) |
| PEM1B | <i>*Darker wetland colors show impacted wetlands. Lighter wetland colors show the extent of wetlands mapped within the 2006 study area. Reference EA acronym list for NWI types.</i> | Existing Slough / Drainage | Grade Control |
| PEM1H | | Proposed New Stream | Protected Vegetation |
| PFO1C | | Stream Impacts | Revegetation (Enhanced) |
| PSS1B | | Abandoned Culvert | Egg Incubation Box |
| PSS1E | | Extended Culvert | Proposed New Culvert Crossing |
| PSS1H | | Upgraded Fish Culvert | Rootwads |
| R3OW | | Upgraded Debris Culvert | |
| Upland | | Fish Passage Culverts | |

WETLAND IMPACTS AND PROPOSED STREAM MITIGATION

TS 28/29/30 S, R 56/57/58/59 E,
Copper River Meridian, Alaska

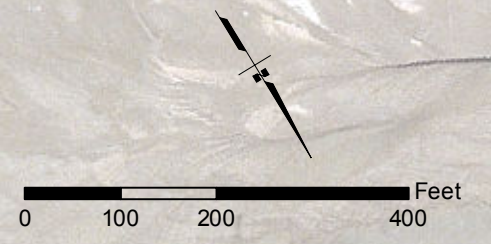
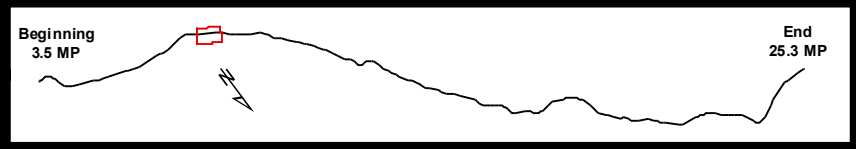


STATE OF ALASKA
DEPARTMENT OF TRANSPORTATION
AND PUBLIC FACILITIES
DOT & PF Project No. 68606
HAINES HIGHWAY
MILEPOST 3.5 - 25.3

Haines, Alaska

DATE: April 26, 2013

Figure Set C (07 OF 34)



Stream	Mile Post Points	Existing Streams	Cut (Enhanced)
PEM1B	<i>*Darker wetland colors show impacted wetlands. Lighter wetland colors show the extent of wetlands mapped within the 2006 study area. Reference EA acronym list for NWI types.</i>	Existing Slough / Drainage	Grade Control
PEM1H		Proposed New Stream	Protected Vegetation
PFO1C		Stream Impacts	Revegetation (Enhanced)
PSS1B		Abandoned Culvert	Egg Incubation Box
PSS1E		Extended Culvert	Proposed New Culvert Crossing
PSS1H		Upgraded Fish Culvert	Rootwads
R3OW		Upgraded Debris Culvert	
Upland		Fish Passage Culverts	

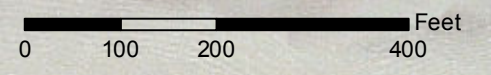
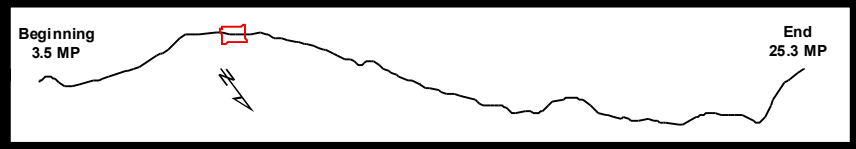
**WETLAND IMPACTS
AND
PROPOSED STREAM MITIGATION**

TS 28/29/30 S, R 56/57/58/59 E,
Copper River Meridian, Alaska



STATE OF ALASKA
DEPARTMENT OF TRANSPORTATION
AND PUBLIC FACILITIES
DOT & PF Project No. 68606
HAINES HIGHWAY
MILEPOST 3.5 - 25.3
Haines, Alaska

DATE: April 26, 2013 Figure Set C (08 OF 34)



- | | | | |
|--------|--|----------------------------|-------------------------------|
| Stream | Mile Post Points | Existing Streams | Cut (Enhanced) |
| PEM1B | <i>*Darker wetland colors show impacted wetlands. Lighter wetland colors show the extent of wetlands mapped within the 2006 study area. Reference EA acronym list for NWI types.</i> | Existing Slough / Drainage | Grade Control |
| PEM1H | | Proposed New Stream | Protected Vegetation |
| PFO1C | | Stream Impacts | Revegetation (Enhanced) |
| PSS1B | | Abandoned Culvert | Egg Incubation Box |
| PSS1E | | Extended Culvert | Proposed New Culvert Crossing |
| PSS1H | | Upgraded Fish Culvert | Rootwads |
| R3OW | | Upgraded Debris Culvert | |
| Upland | | Fish Passage Culverts | |

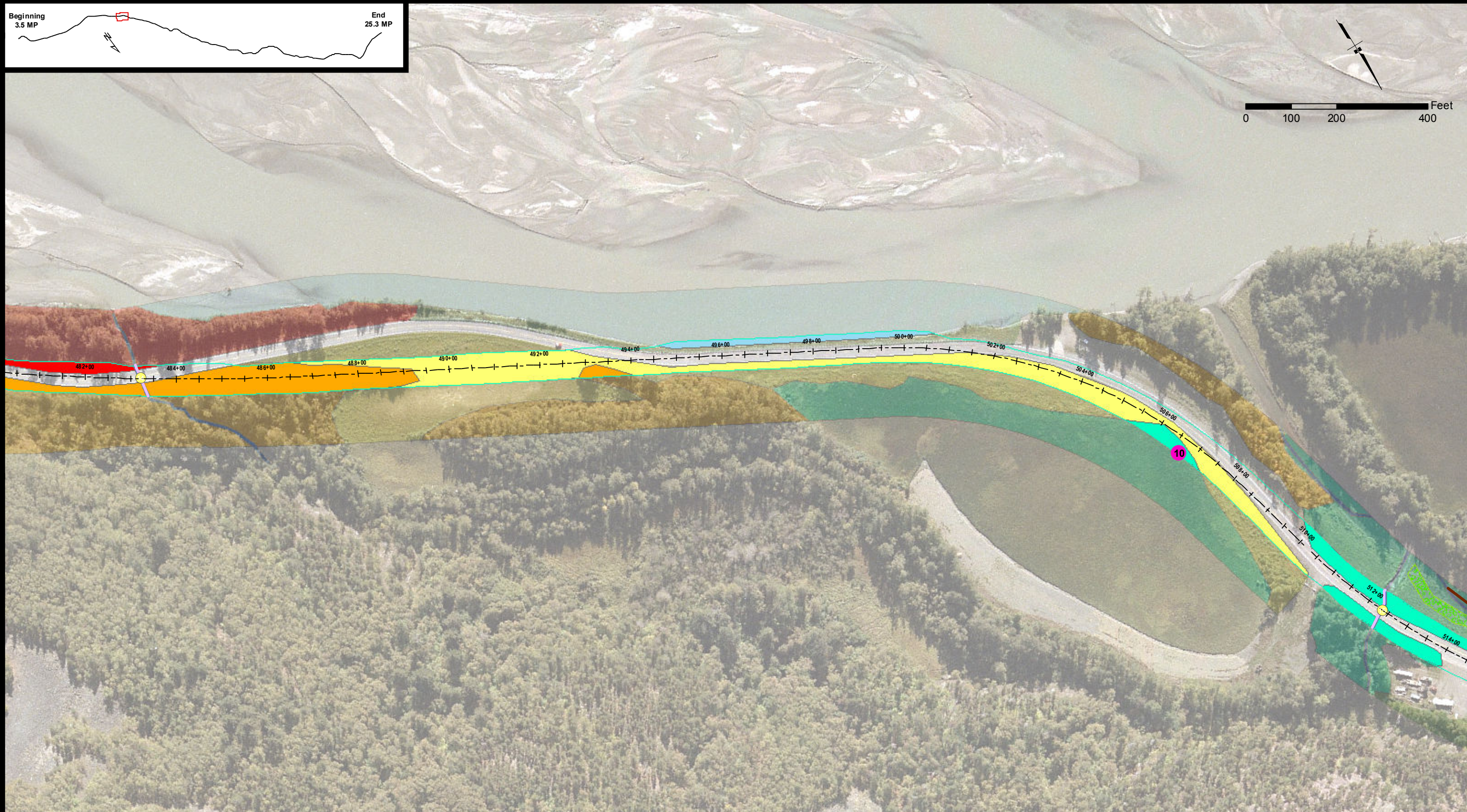
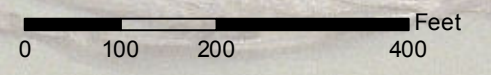
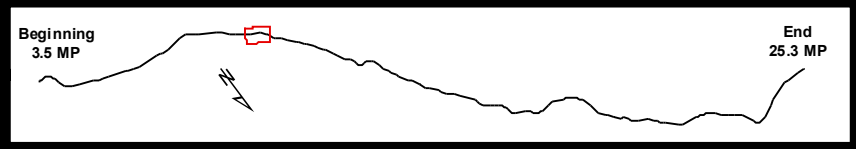
**WETLAND IMPACTS
AND
PROPOSED STREAM MITIGATION**

TS 28/29/30 S, R 56/57/58/59 E,
Copper River Meridian, Alaska



STATE OF ALASKA
DEPARTMENT OF TRANSPORTATION
AND PUBLIC FACILITIES
DOT & PF Project No. 68606
HAINES HIGHWAY
MILEPOST 3.5 - 25.3
Haines, Alaska

DATE: April 26, 2013 Figure Set C (09 OF 34)



Stream	Mile Post Points	Existing Streams	Cut (Enhanced)
PEM1B	<i>*Darker wetland colors show impacted wetlands. Lighter wetland colors show the extent of wetlands mapped within the 2006 study area. Reference EA acronym list for NWI types.</i>	Existing Slough / Drainage	Grade Control
PEM1H		Proposed New Stream	Protected Vegetation
PFO1C		Stream Impacts	Revegetation (Enhanced)
PSS1B		Abandoned Culvert	Egg Incubation Box
PSS1E		Extended Culvert	Proposed New Culvert Crossing
PSS1H		Upgraded Fish Culvert	Rootwads
R3OW		Upgraded Debris Culvert	
Upland		Fish Passage Culverts	

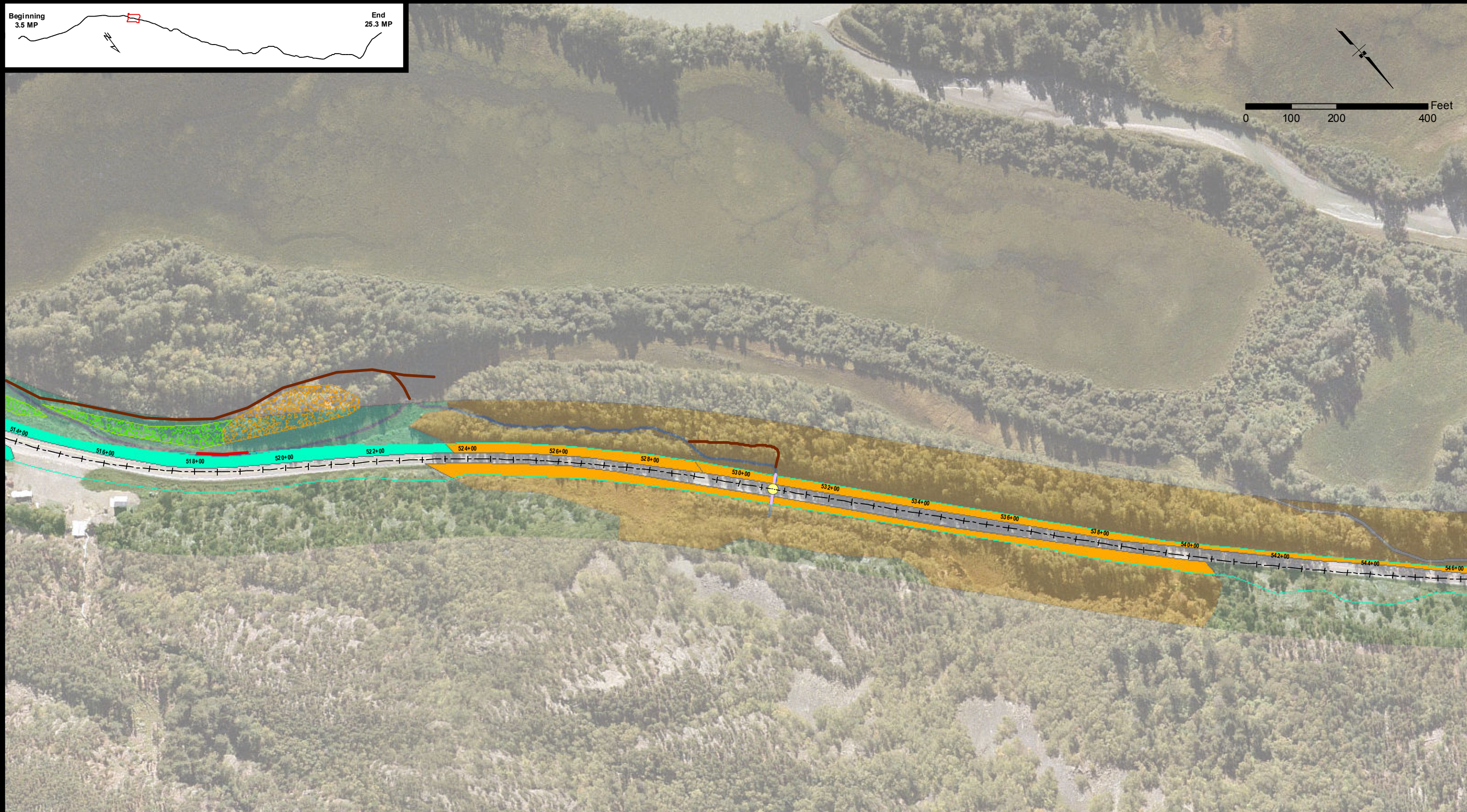
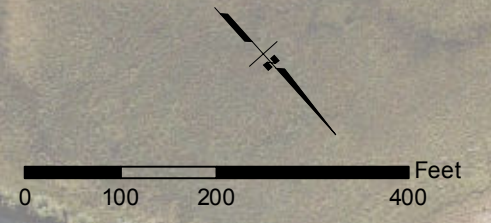
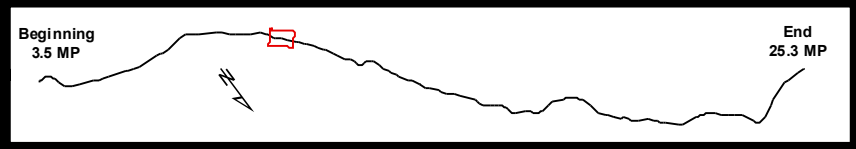
**WETLAND IMPACTS
AND
PROPOSED STREAM MITIGATION**

TS 28/29/30 S, R 56/57/58/59 E,
Copper River Meridian, Alaska



STATE OF ALASKA
DEPARTMENT OF TRANSPORTATION
AND PUBLIC FACILITIES
DOT & PF Project No. 68606
HAINES HIGHWAY
MILEPOST 3.5 - 25.3
Haines, Alaska

DATE: April 26, 2013 Figure Set C (10 OF 34)



Stream	Mile Post Points	Existing Streams	Cut (Enhanced)
PEM1B	<i>*Darker wetland colors show impacted wetlands. Lighter wetland colors show the extent of wetlands mapped within the 2006 study area. Reference EA acronym list for NWI types.</i>	Existing Slough / Drainage	Grade Control
PEM1H		Proposed New Stream	Protected Vegetation
PFO1C		Stream Impacts	Revegetation (Enhanced)
PSS1B		Abandoned Culvert	Egg Incubation Box
PSS1E		Extended Culvert	Proposed New Culvert Crossing
PSS1H		Upgraded Fish Culvert	Rootwads
R3OW		Upgraded Debris Culvert	
Upland		Fish Passage Culverts	

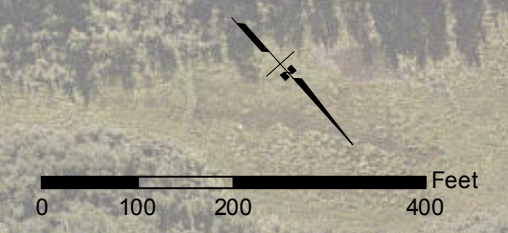
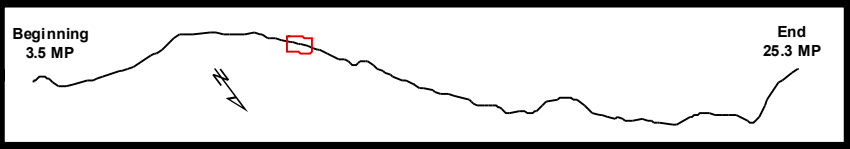
**WETLAND IMPACTS
AND
PROPOSED STREAM MITIGATION**

TS 28/29/30 S, R 56/57/58/59 E,
Copper River Meridian, Alaska



STATE OF ALASKA
DEPARTMENT OF TRANSPORTATION
AND PUBLIC FACILITIES
DOT & PF Project No. 68606
HAINES HIGHWAY
MILEPOST 3.5 - 25.3
Haines, Alaska

DATE: April 26, 2013 Figure Set C (11 OF 34)



- | | | | |
|--------|--|----------------------------|-------------------------------|
| Stream | Mile Post Points | Existing Streams | Cut (Enhanced) |
| PEM1B | <i>*Darker wetland colors show impacted wetlands. Lighter wetland colors show the extent of wetlands mapped within the 2006 study area. Reference EA acronym list for NWI types.</i> | Existing Slough / Drainage | Grade Control |
| PEM1H | | Proposed New Stream | Protected Vegetation |
| PFO1C | | Stream Impacts | Revegetation (Enhanced) |
| PSS1B | | Abandoned Culvert | Egg Incubation Box |
| PSS1E | | Extended Culvert | Proposed New Culvert Crossing |
| PSS1H | | Upgraded Fish Culvert | Rootwads |
| R3OW | | Upgraded Debris Culvert | |
| Upland | | Fish Passage Culverts | |

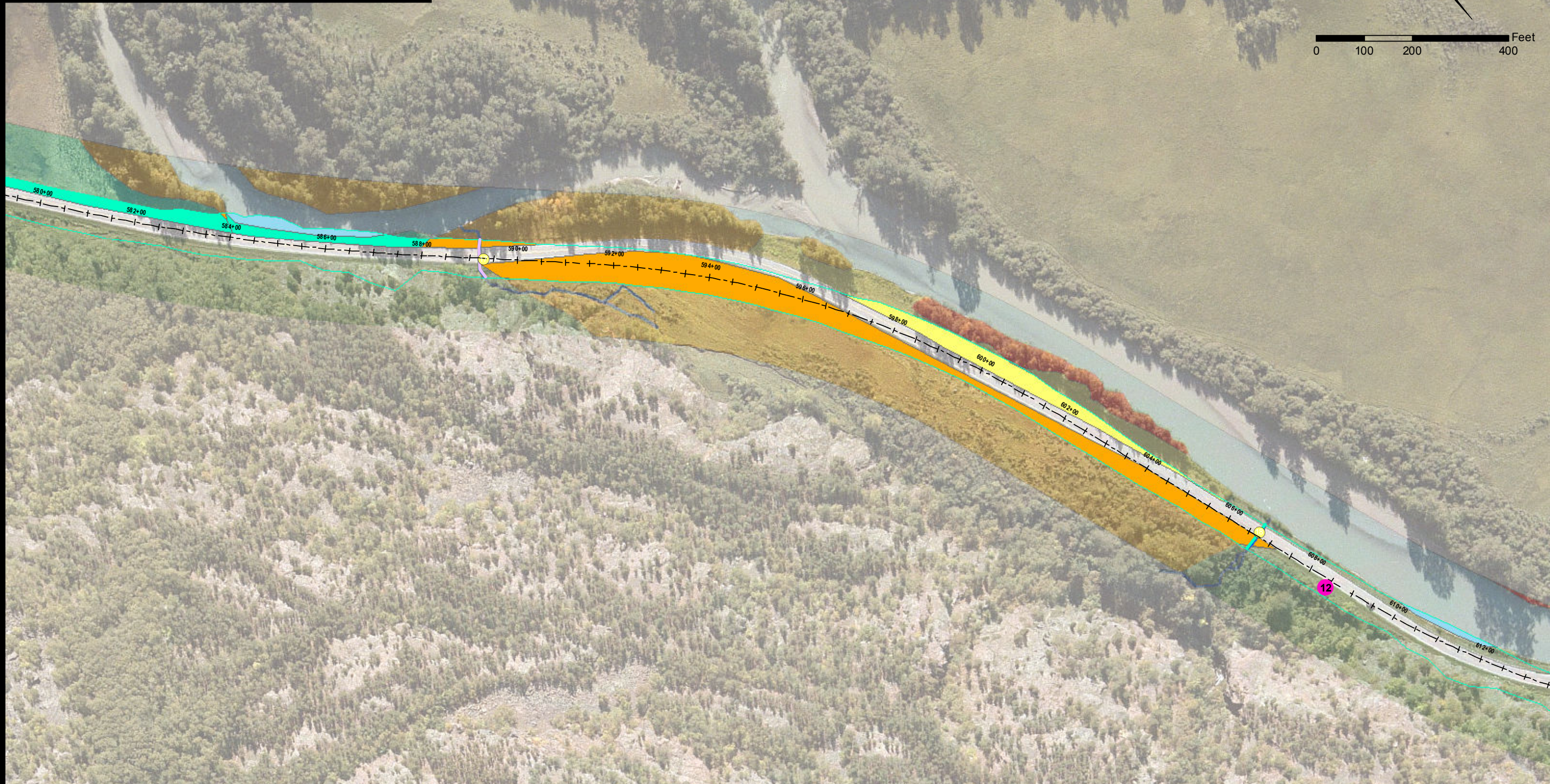
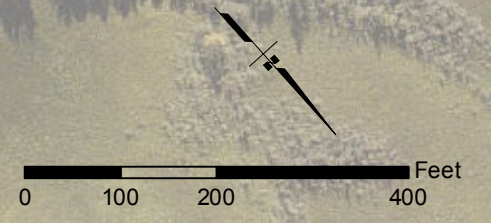
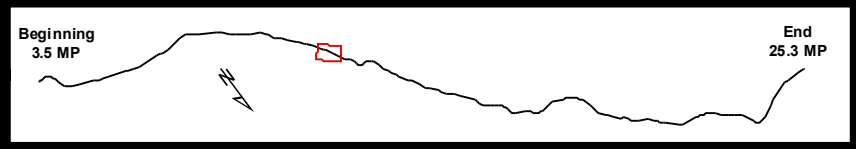
WETLAND IMPACTS AND PROPOSED STREAM MITIGATION

TS 28/29/30 S, R 56/57/58/59 E,
Copper River Meridian, Alaska



STATE OF ALASKA
DEPARTMENT OF TRANSPORTATION
AND PUBLIC FACILITIES
DOT & PF Project No. 68606
HAINES HIGHWAY
MILEPOST 3.5 - 25.3

Haines, Alaska



Stream	Cut & Fill Limits	Existing Streams	Cut (Enhanced)
PEM1B	Mile Post Points	Existing Slough / Drainage	Grade Control
PEM1H	<i>*Darker wetland colors show impacted wetlands. Lighter wetland colors show the extent of wetlands mapped within the 2006 study area. Reference EA acronym list for NWI types.</i>	Proposed New Stream	Protected Vegetation
PFO1C		Stream Impacts	Revegetation (Enhanced)
PSS1B		Abandoned Culvert	Egg Incubation Box
PSS1E		Extended Culvert	Proposed New Culvert Crossing
PSS1H		Upgraded Fish Culvert	Rootwads
R3OW		Upgraded Debris Culvert	
Upland		Fish Passage Culverts	

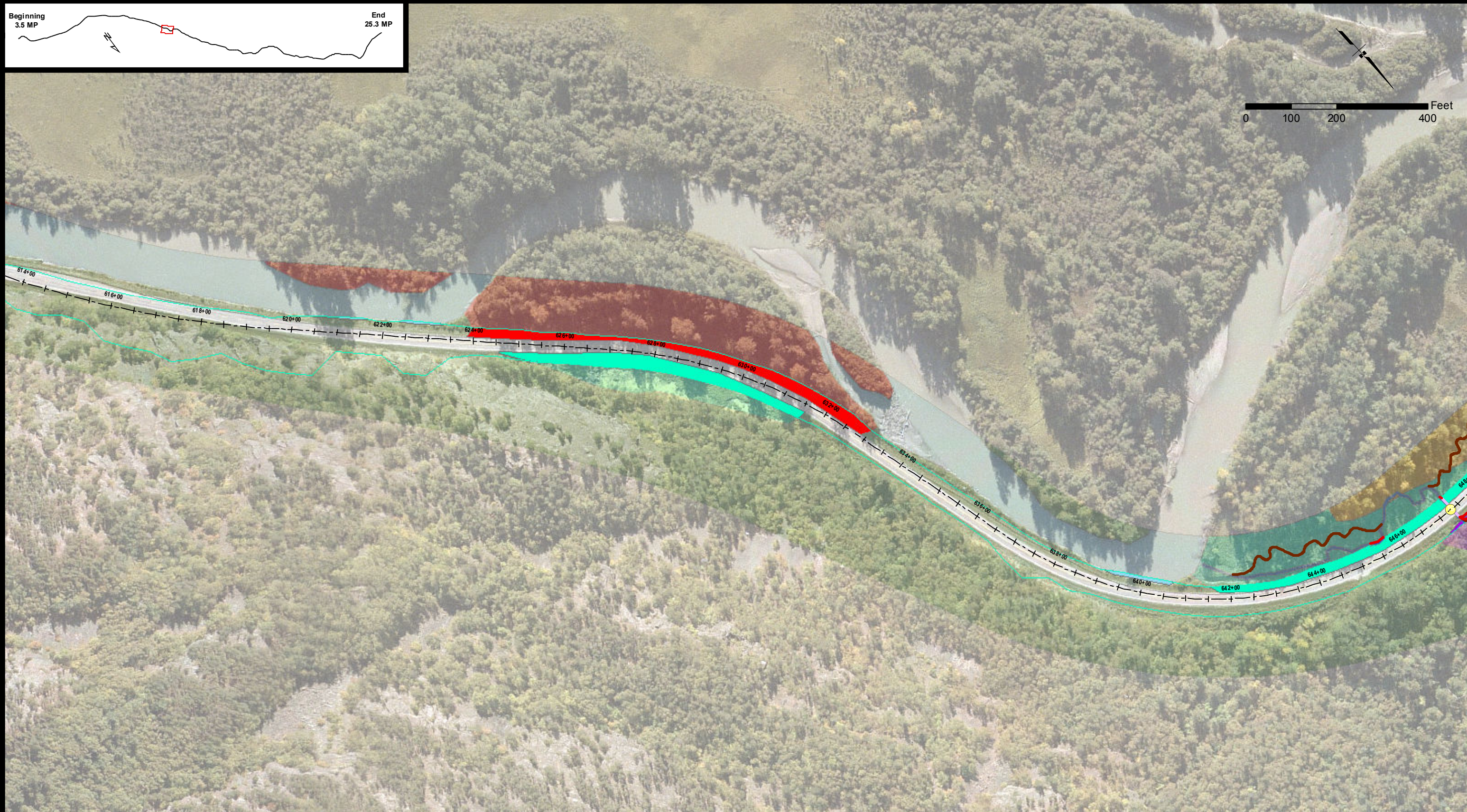
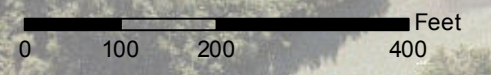
**WETLAND IMPACTS
AND
PROPOSED STREAM MITIGATION**

TS 28/29/30 S, R 56/57/58/59 E,
Copper River Meridian, Alaska



STATE OF ALASKA
DEPARTMENT OF TRANSPORTATION
AND PUBLIC FACILITIES
DOT & PF Project No. 68606
HAINES HIGHWAY
MILEPOST 3.5 - 25.3
Haines, Alaska

DATE: April 26, 2013 Figure Set C (13 OF 34)



- | | | | |
|--------|--|----------------------------|-------------------------------|
| Stream | Cut & Fill Limits | Existing Streams | Cut (Enhanced) |
| PEM1B | Mile Post Points | Existing Slough / Drainage | Grade Control |
| PEM1H | <i>*Darker wetland colors show impacted wetlands. Lighter wetland colors show the extent of wetlands mapped within the 2006 study area. Reference EA acronym list for NWI types.</i> | Proposed New Stream | Protected Vegetation |
| PFO1C | | Stream Impacts | Revegetation (Enhanced) |
| PSS1B | | Abandoned Culvert | Egg Incubation Box |
| PSS1E | | Extended Culvert | Proposed New Culvert Crossing |
| PSS1H | | Upgraded Fish Culvert | Rootwads |
| R3OW | | Upgraded Debris Culvert | |
| Upland | | Fish Passage Culverts | |

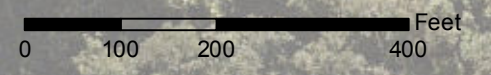
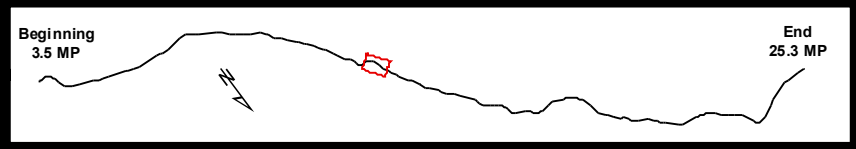
**WETLAND IMPACTS
AND
PROPOSED STREAM MITIGATION**

TS 28/29/30 S, R 56/57/58/59 E,
Copper River Meridian, Alaska



STATE OF ALASKA
DEPARTMENT OF TRANSPORTATION
AND PUBLIC FACILITIES
DOT & PF Project No. 68606
HAINES HIGHWAY
MILEPOST 3.5 - 25.3
Haines, Alaska

DATE: April 26, 2013 Figure Set C (14 OF 34)



- | | | | |
|--------|--|----------------------------|-------------------------------|
| Stream | Mile Post Points | Existing Streams | Cut (Enhanced) |
| PEM1B | <i>*Darker wetland colors show impacted wetlands. Lighter wetland colors show the extent of wetlands mapped within the 2006 study area. Reference EA acronym list for NWI types.</i> | Existing Slough / Drainage | Grade Control |
| PEM1H | | Proposed New Stream | Protected Vegetation |
| PFO1C | | Stream Impacts | Revegetation (Enhanced) |
| PSS1B | | Abandoned Culvert | Egg Incubation Box |
| PSS1E | | Extended Culvert | Proposed New Culvert Crossing |
| PSS1H | | Upgraded Fish Culvert | Rootwads |
| R3OW | | Upgraded Debris Culvert | |
| Upland | | Fish Passage Culverts | |

WETLAND IMPACTS AND PROPOSED STREAM MITIGATION

TS 28/29/30 S, R 56/57/58/59 E,
Copper River Meridian, Alaska

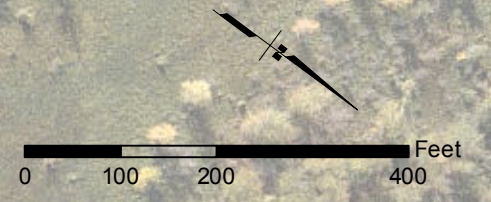
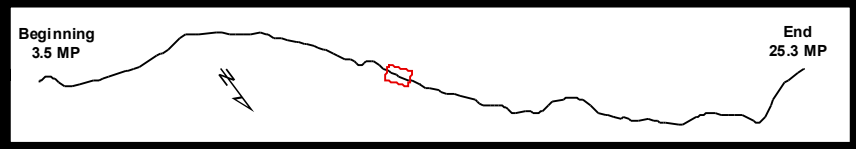


STATE OF ALASKA
DEPARTMENT OF TRANSPORTATION
AND PUBLIC FACILITIES
DOT & PF Project No. 68606
HAINES HIGHWAY
MILEPOST 3.5 - 25.3

Haines, Alaska

DATE: April 26, 2013

Figure Set C (15 OF 34)



Stream	Cut & Fill Limits	Existing Streams	Cut (Enhanced)
PEM1B	Mile Post Points	Existing Slough / Drainage	Grade Control
PEM1H	<i>*Darker wetland colors show impacted wetlands. Lighter wetland colors show the extent of wetlands mapped within the 2006 study area. Reference EA acronym list for NWI types.</i>	Proposed New Stream	Protected Vegetation
PFO1C		Stream Impacts	Revegetation (Enhanced)
PSS1B		Abandoned Culvert	Egg Incubation Box
PSS1E		Extended Culvert	Proposed New Culvert Crossing
PSS1H		Upgraded Fish Culvert	Rootwads
R3OW		Upgraded Debris Culvert	
Upland		Fish Passage Culverts	

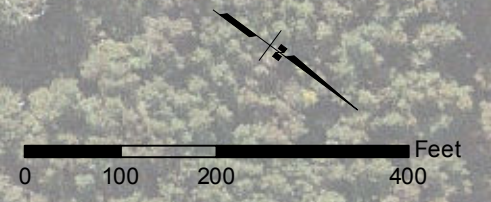
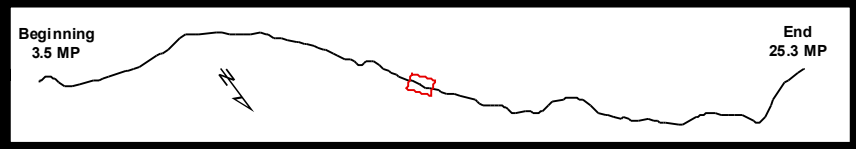
**WETLAND IMPACTS
AND
PROPOSED STREAM MITIGATION**

TS 28/29/30 S, R 56/57/58/59 E,
Copper River Meridian, Alaska



STATE OF ALASKA
DEPARTMENT OF TRANSPORTATION
AND PUBLIC FACILITIES
DOT & PF Project No. 68606
HAINES HIGHWAY
MILEPOST 3.5 - 25.3
Haines, Alaska

DATE: April 26, 2013 Figure Set C (16 OF 34)



- | | | | |
|--------|--|----------------------------|-------------------------------|
| Stream | Mile Post Points | Existing Streams | Cut (Enhanced) |
| PEM1B | <i>*Darker wetland colors show impacted wetlands. Lighter wetland colors show the extent of wetlands mapped within the 2006 study area. Reference EA acronym list for NWI types.</i> | Existing Slough / Drainage | Grade Control |
| PEM1H | | Proposed New Stream | Protected Vegetation |
| PFO1C | | Stream Impacts | Revegetation (Enhanced) |
| PSS1B | | Abandoned Culvert | Egg Incubation Box |
| PSS1E | | Extended Culvert | Proposed New Culvert Crossing |
| PSS1H | | Upgraded Fish Culvert | Rootwads |
| R3OW | | Upgraded Debris Culvert | |
| Upland | | Fish Passage Culverts | |

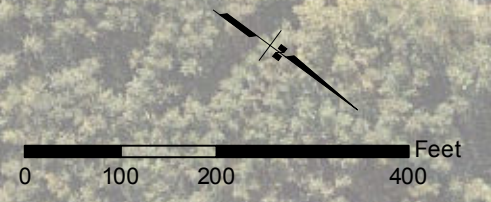
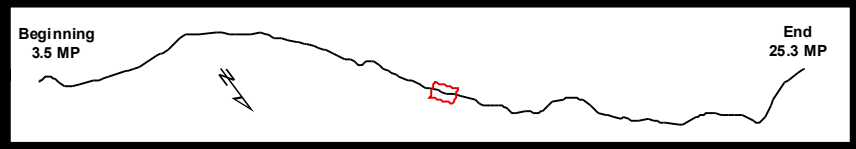
**WETLAND IMPACTS
AND
PROPOSED STREAM MITIGATION**

TS 28/29/30 S, R 56/57/58/59 E,
Copper River Meridian, Alaska



STATE OF ALASKA
DEPARTMENT OF TRANSPORTATION
AND PUBLIC FACILITIES
DOT & PF Project No. 68606
HAINES HIGHWAY
MILEPOST 3.5 - 25.3
Haines, Alaska

DATE: April 26, 2013 Figure Set C (17 OF 34)



Stream	Mile Post Points	Existing Streams	Cut (Enhanced)
PEM1B	<i>*Darker wetland colors show impacted wetlands. Lighter wetland colors show the extent of wetlands mapped within the 2006 study area. Reference EA acronym list for NWI types.</i>	Existing Slough / Drainage	Grade Control
PEM1H		Proposed New Stream	Protected Vegetation
PFO1C		Stream Impacts	Revegetation (Enhanced)
PSS1B		Abandoned Culvert	Egg Incubation Box
PSS1E		Extended Culvert	Proposed New Culvert Crossing
PSS1H		Upgraded Fish Culvert	Rootwads
R3OW		Upgraded Debris Culvert	
Upland		Fish Passage Culverts	

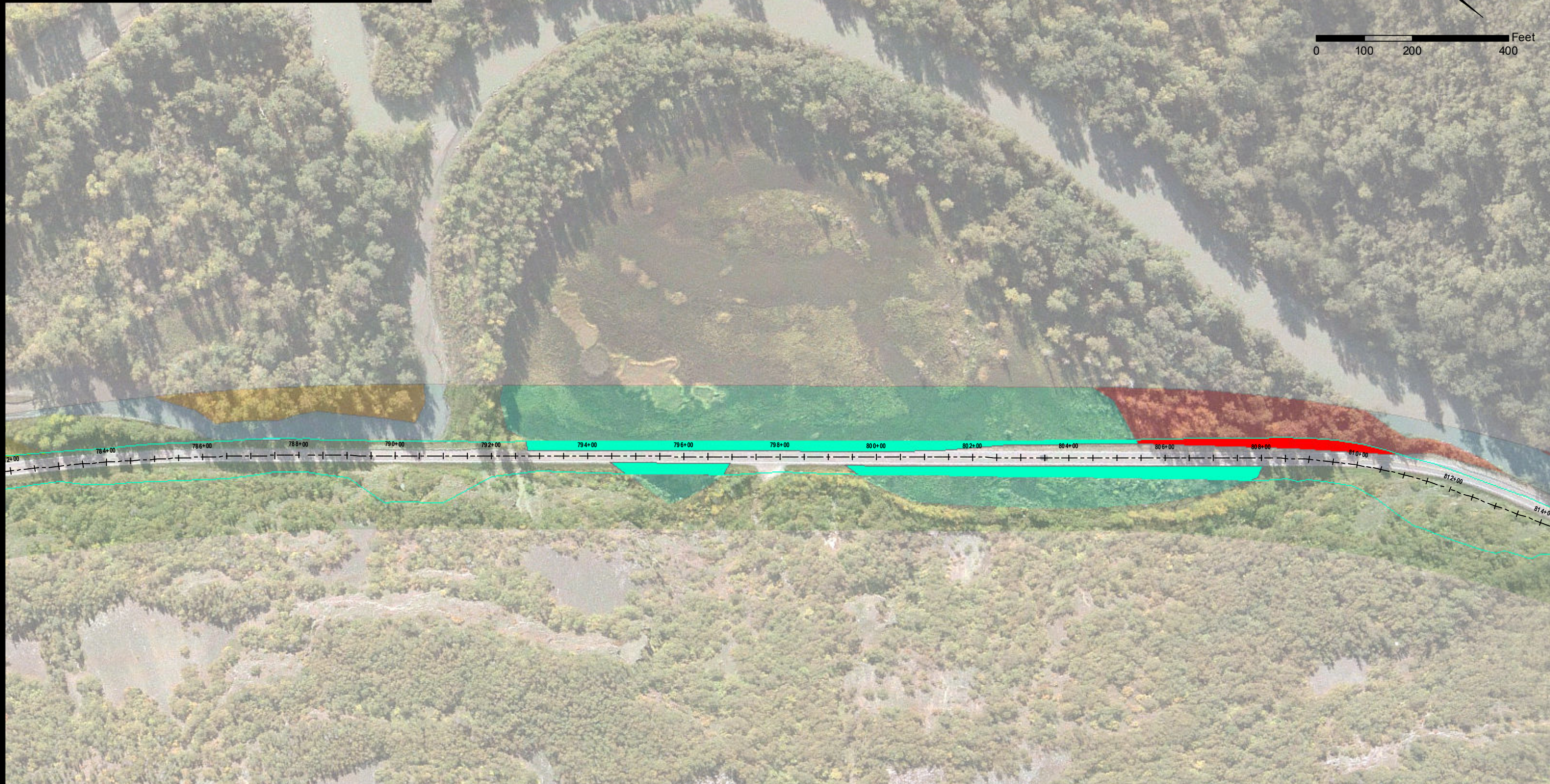
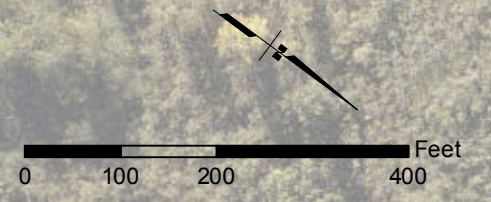
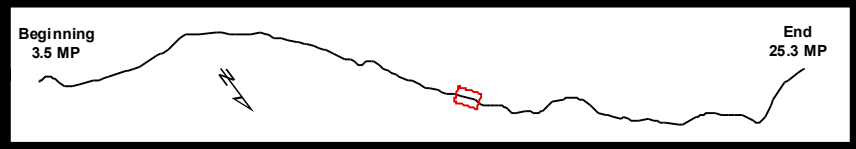
**WETLAND IMPACTS
AND
PROPOSED STREAM MITIGATION**

TS 28/29/30 S, R 56/57/58/59 E,
Copper River Meridian, Alaska



STATE OF ALASKA
DEPARTMENT OF TRANSPORTATION
AND PUBLIC FACILITIES
DOT & PF Project No. 68606
HAINES HIGHWAY
MILEPOST 3.5 - 25.3
Haines, Alaska

DATE: April 26, 2013 Figure Set C (18 OF 34)



- | | | | |
|--------|--|----------------------------|-------------------------------|
| Stream | Cut & Fill Limits | Existing Streams | Cut (Enhanced) |
| PEM1B | Mile Post Points | Existing Slough / Drainage | Grade Control |
| PEM1H | <i>*Darker wetland colors show impacted wetlands. Lighter wetland colors show the extent of wetlands mapped within the 2006 study area. Reference EA acronym list for NWI types.</i> | Proposed New Stream | Protected Vegetation |
| PFO1C | | Stream Impacts | Revegetation (Enhanced) |
| PSS1B | | Abandoned Culvert | Egg Incubation Box |
| PSS1E | | Extended Culvert | Proposed New Culvert Crossing |
| PSS1H | | Upgraded Fish Culvert | Rootwads |
| R3OW | | Upgraded Debris Culvert | |
| Upland | | Fish Passage Culverts | |

WETLAND IMPACTS AND PROPOSED STREAM MITIGATION

TS 28/29/30 S, R 56/57/58/59 E,
Copper River Meridian, Alaska

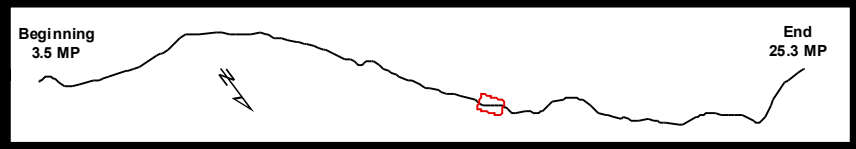


STATE OF ALASKA
DEPARTMENT OF TRANSPORTATION
AND PUBLIC FACILITIES
DOT & PF Project No. 68606
HAINES HIGHWAY
MILEPOST 3.5 - 25.3

Haines, Alaska

DATE: April 26, 2013

Figure Set C (19 OF 34)



- | | | | |
|--------|--|----------------------------|-------------------------------|
| Stream | Mile Post Points | Existing Streams | Cut (Enhanced) |
| PEM1B | <i>*Darker wetland colors show impacted wetlands. Lighter wetland colors show the extent of wetlands mapped within the 2006 study area. Reference EA acronym list for NWI types.</i> | Existing Slough / Drainage | Grade Control |
| PEM1H | | Proposed New Stream | Protected Vegetation |
| PFO1C | | Stream Impacts | Revegetation (Enhanced) |
| PSS1B | | Abandoned Culvert | Egg Incubation Box |
| PSS1E | | Extended Culvert | Proposed New Culvert Crossing |
| PSS1H | | Upgraded Fish Culvert | Rootwads |
| R3OW | | Upgraded Debris Culvert | |
| Upland | | Fish Passage Culverts | |

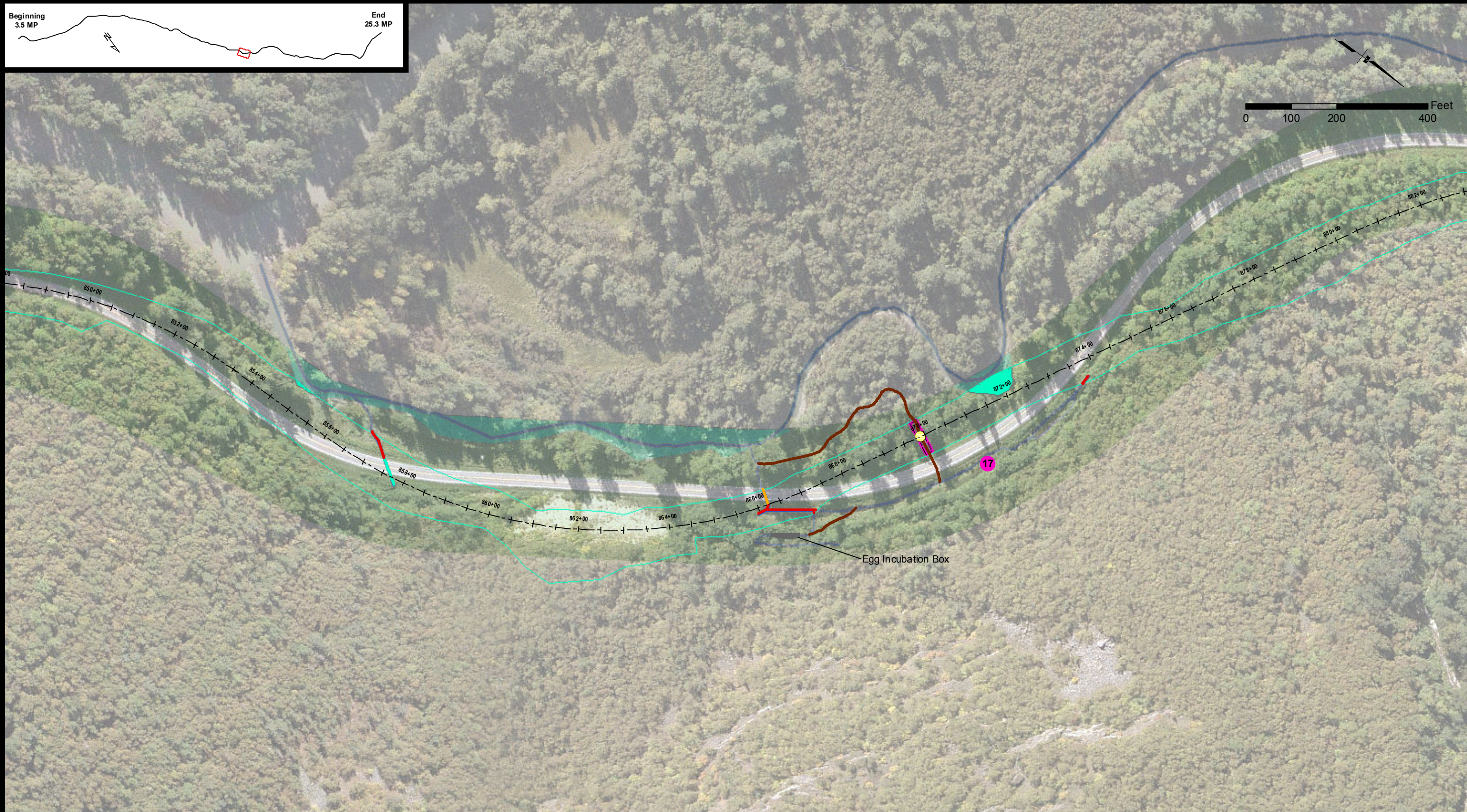
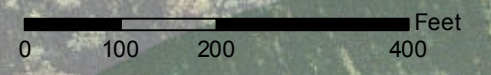
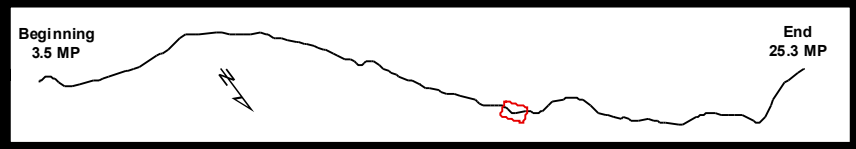
**WETLAND IMPACTS
AND
PROPOSED STREAM MITIGATION**

TS 28/29/30 S, R 56/57/58/59 E,
Copper River Meridian, Alaska



STATE OF ALASKA
DEPARTMENT OF TRANSPORTATION
AND PUBLIC FACILITIES
DOT & PF Project No. 68606
HAINES HIGHWAY
MILEPOST 3.5 - 25.3
Haines, Alaska

DATE: April 26, 2013 Figure Set C (20 OF 34)



- | | | | |
|--------|--|----------------------------|-------------------------------|
| Stream | Mile Post Points | Existing Streams | Cut (Enhanced) |
| PEM1B | <i>*Darker wetland colors show impacted wetlands. Lighter wetland colors show the extent of wetlands mapped within the 2006 study area. Reference EA acronym list for NWI types.</i> | Existing Slough / Drainage | Grade Control |
| PEM1H | | Proposed New Stream | Protected Vegetation |
| PFO1C | | Stream Impacts | Revegetation (Enhanced) |
| PSS1B | | Abandoned Culvert | Egg Incubation Box |
| PSS1E | | Extended Culvert | Proposed New Culvert Crossing |
| PSS1H | | Upgraded Fish Culvert | Rootwads |
| R3OW | | Upgraded Debris Culvert | |
| Upland | | Fish Passage Culverts | |

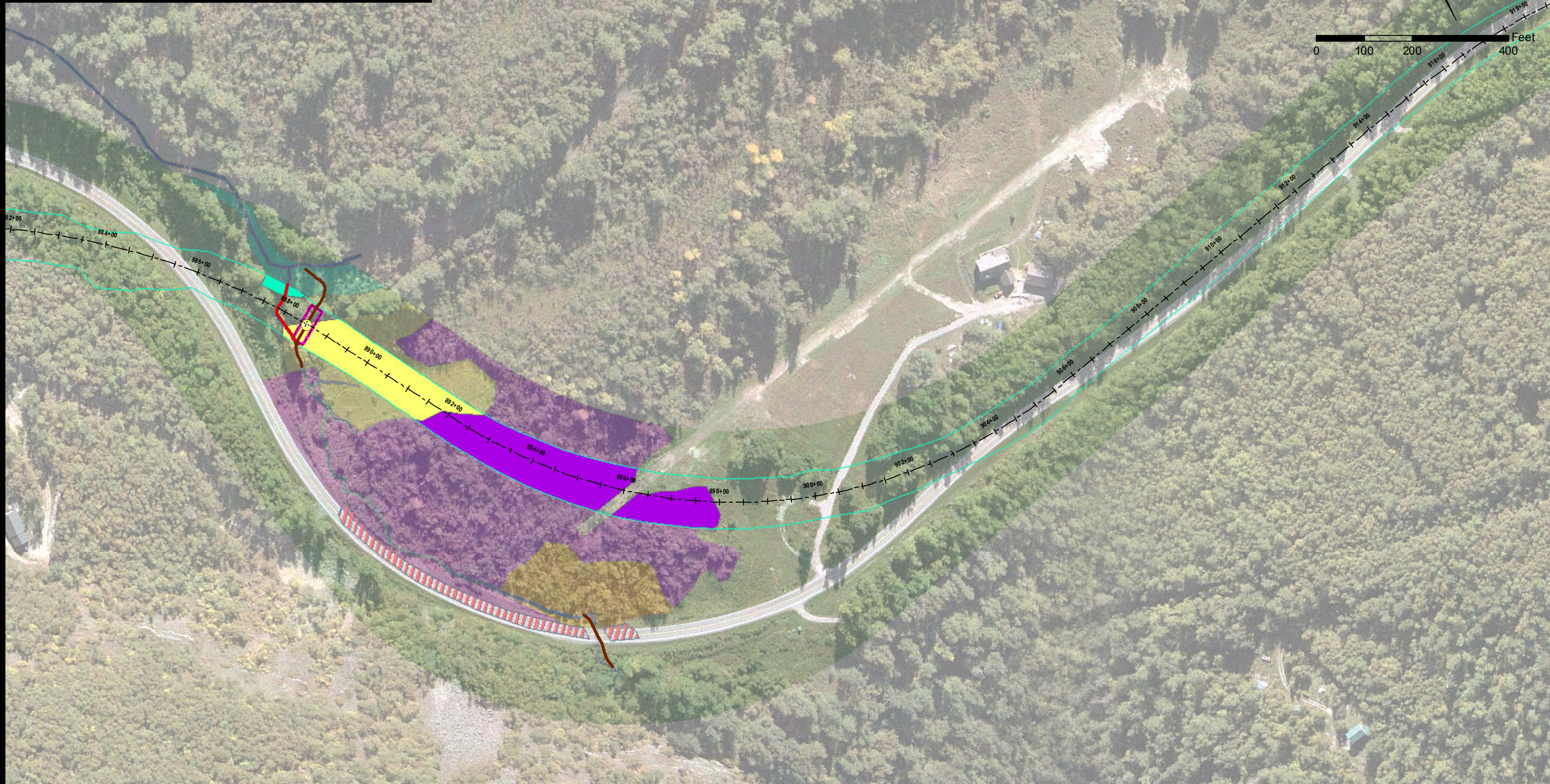
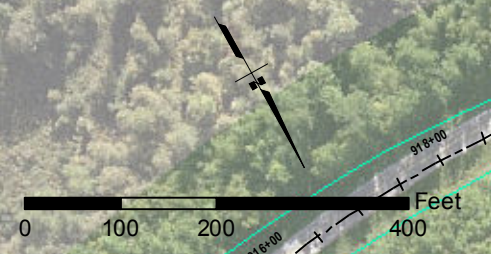
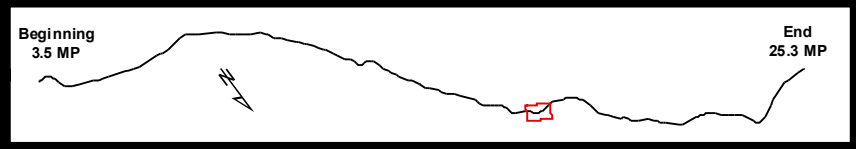
**WETLAND IMPACTS
AND
PROPOSED STREAM MITIGATION**

TS 28/29/30 S, R 56/57/58/59 E,
Copper River Meridian, Alaska



STATE OF ALASKA
DEPARTMENT OF TRANSPORTATION
AND PUBLIC FACILITIES
DOT & PF Project No. 68606
HAINES HIGHWAY
MILEPOST 3.5 - 25.3
Haines, Alaska

DATE: April 26, 2013 Figure Set C (21 OF 34)



- | | | | |
|--------|--|----------------------------|-------------------------------|
| Stream | Cut & Fill Limits | Existing Streams | Cut (Enhanced) |
| PEM1B | Mile Post Points | Existing Slough / Drainage | Grade Control |
| PEM1H | <i>*Darker wetland colors show impacted wetlands. Lighter wetland colors show the extent of wetlands mapped within the 2006 study area. Reference EA acronym list for NWI types.</i> | Proposed New Stream | Protected Vegetation |
| PFO1C | | Stream Impacts | Revegetation (Enhanced) |
| PSS1B | | Abandoned Culvert | Egg Incubation Box |
| PSS1E | | Extended Culvert | Proposed New Culvert Crossing |
| PSS1H | | Upgraded Fish Culvert | Rootwads |
| R3OW | | Upgraded Debris Culvert | |
| Upland | | Fish Passage Culverts | |

WETLAND IMPACTS AND PROPOSED STREAM MITIGATION

TS 28/29/30 S, R 56/57/58/59 E,
Copper River Meridian, Alaska

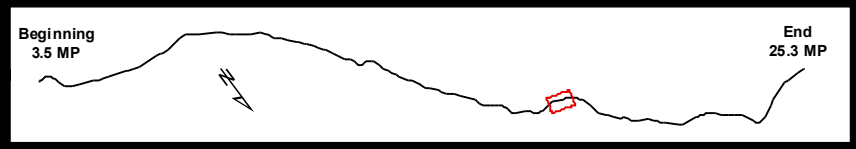


STATE OF ALASKA
DEPARTMENT OF TRANSPORTATION
AND PUBLIC FACILITIES
DOT & PF Project No. 68606
HAINES HIGHWAY
MILEPOST 3.5 - 25.3

Haines, Alaska

DATE: April 26, 2013

Figure Set C (22 OF 34)



Stream	Cut & Fill Limits	Existing Streams	Cut (Enhanced)
PEM1B	Mile Post Points	Existing Slough / Drainage	Grade Control
PEM1H	<i>*Darker wetland colors show impacted wetlands. Lighter wetland colors show the extent of wetlands mapped within the 2006 study area. Reference EA acronym list for NWI types.</i>	Proposed New Stream	Protected Vegetation
PFO1C		Stream Impacts	Revegetation (Enhanced)
PSS1B		Abandoned Culvert	Egg Incubation Box
PSS1E		Extended Culvert	Proposed New Culvert Crossing
PSS1H		Upgraded Fish Culvert	Rootwads
R3OW		Upgraded Debris Culvert	
Upland		Fish Passage Culverts	

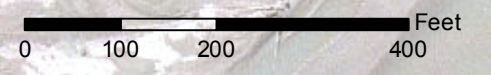
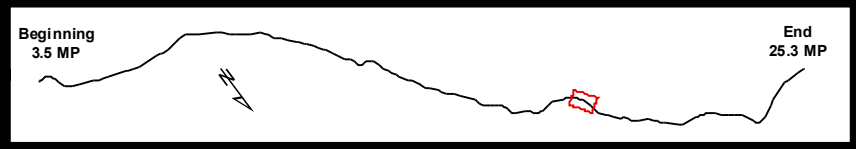
**WETLAND IMPACTS
AND
PROPOSED STREAM MITIGATION**

TS 28/29/30 S, R 56/57/58/59 E,
Copper River Meridian, Alaska



STATE OF ALASKA
DEPARTMENT OF TRANSPORTATION
AND PUBLIC FACILITIES
DOT & PF Project No. 68606
HAINES HIGHWAY
MILEPOST 3.5 - 25.3
Haines, Alaska

DATE: April 26, 2013 Figure Set C (23 OF 34)



- | | | | |
|--------|--|----------------------------|-------------------------------|
| Stream | Mile Post Points | Existing Streams | Cut (Enhanced) |
| PEM1B | <i>*Darker wetland colors show impacted wetlands. Lighter wetland colors show the extent of wetlands mapped within the 2006 study area. Reference EA acronym list for NWI types.</i> | Existing Slough / Drainage | Grade Control |
| PEM1H | | Proposed New Stream | Protected Vegetation |
| PFO1C | | Stream Impacts | Revegetation (Enhanced) |
| PSS1B | | Abandoned Culvert | Egg Incubation Box |
| PSS1E | | Extended Culvert | Proposed New Culvert Crossing |
| PSS1H | | Upgraded Fish Culvert | Rootwads |
| R3OW | | Upgraded Debris Culvert | |
| Upland | | Fish Passage Culverts | |

WETLAND IMPACTS AND PROPOSED STREAM MITIGATION

TS 28/29/30 S, R 56/57/58/59 E,
Copper River Meridian, Alaska

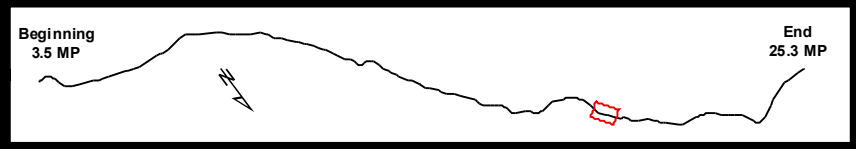


STATE OF ALASKA
DEPARTMENT OF TRANSPORTATION
AND PUBLIC FACILITIES
DOT & PF Project No. 68606
HAINES HIGHWAY
MILEPOST 3.5 - 25.3

Haines, Alaska

DATE: April 26, 2013

Figure Set C (24 OF 34)



- | | | | |
|--------|--|----------------------------|-------------------------------|
| Stream | Mile Post Points | Existing Streams | Cut (Enhanced) |
| PEM1B | <i>*Darker wetland colors show impacted wetlands. Lighter wetland colors show the extent of wetlands mapped within the 2006 study area. Reference EA acronym list for NWI types.</i> | Existing Slough / Drainage | Grade Control |
| PEM1H | | Proposed New Stream | Protected Vegetation |
| PFO1C | | Stream Impacts | Revegetation (Enhanced) |
| PSS1B | | Abandoned Culvert | Egg Incubation Box |
| PSS1E | | Extended Culvert | Proposed New Culvert Crossing |
| PSS1H | | Upgraded Fish Culvert | Rootwads |
| R3OW | | Upgraded Debris Culvert | |
| Upland | | Fish Passage Culverts | |

WETLAND IMPACTS AND PROPOSED STREAM MITIGATION

TS 28/29/30 S, R 56/57/58/59 E,
Copper River Meridian, Alaska

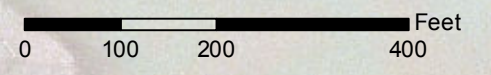
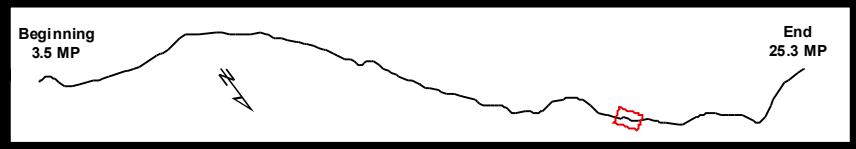


STATE OF ALASKA
DEPARTMENT OF TRANSPORTATION
AND PUBLIC FACILITIES
DOT & PF Project No. 68606
HAINES HIGHWAY
MILEPOST 3.5 - 25.3

Haines, Alaska

DATE: April 26, 2013

Figure Set C (25 OF 34)



- | | | | |
|--------|--|----------------------------|-------------------------------|
| Stream | Mile Post Points | Existing Streams | Cut (Enhanced) |
| PEM1B | <i>*Darker wetland colors show impacted wetlands. Lighter wetland colors show the extent of wetlands mapped within the 2006 study area. Reference EA acronym list for NWI types.</i> | Existing Slough / Drainage | Grade Control |
| PEM1H | | Proposed New Stream | Protected Vegetation |
| PFO1C | | Stream Impacts | Revegetation (Enhanced) |
| PSS1B | | Abandoned Culvert | Egg Incubation Box |
| PSS1E | | Extended Culvert | Proposed New Culvert Crossing |
| PSS1H | | Upgraded Fish Culvert | Rootwads |
| R3OW | | Upgraded Debris Culvert | |
| Upland | | Fish Passage Culverts | |

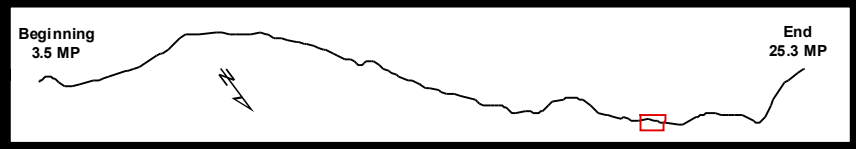
**WETLAND IMPACTS
AND
PROPOSED STREAM MITIGATION**

TS 28/29/30 S, R 56/57/58/59 E,
Copper River Meridian, Alaska



STATE OF ALASKA
DEPARTMENT OF TRANSPORTATION
AND PUBLIC FACILITIES
DOT & PF Project No. 68606
HAINES HIGHWAY
MILEPOST 3.5 - 25.3
Haines, Alaska

DATE: April 26, 2013 Figure Set C (26 OF 34)



- | | | | |
|--------|--|----------------------------|-------------------------------|
| Stream | Mile Post Points | Existing Streams | Cut (Enhanced) |
| PEM1B | <i>*Darker wetland colors show impacted wetlands. Lighter wetland colors show the extent of wetlands mapped within the 2006 study area. Reference EA acronym list for NWI types.</i> | Existing Slough / Drainage | Grade Control |
| PEM1H | | Proposed New Stream | Protected Vegetation |
| PFO1C | | Stream Impacts | Revegetation (Enhanced) |
| PSS1B | | Abandoned Culvert | Egg Incubation Box |
| PSS1E | | Extended Culvert | Proposed New Culvert Crossing |
| PSS1H | | Upgraded Fish Culvert | Rootwads |
| R3OW | | Upgraded Debris Culvert | |
| Upland | | Fish Passage Culverts | |

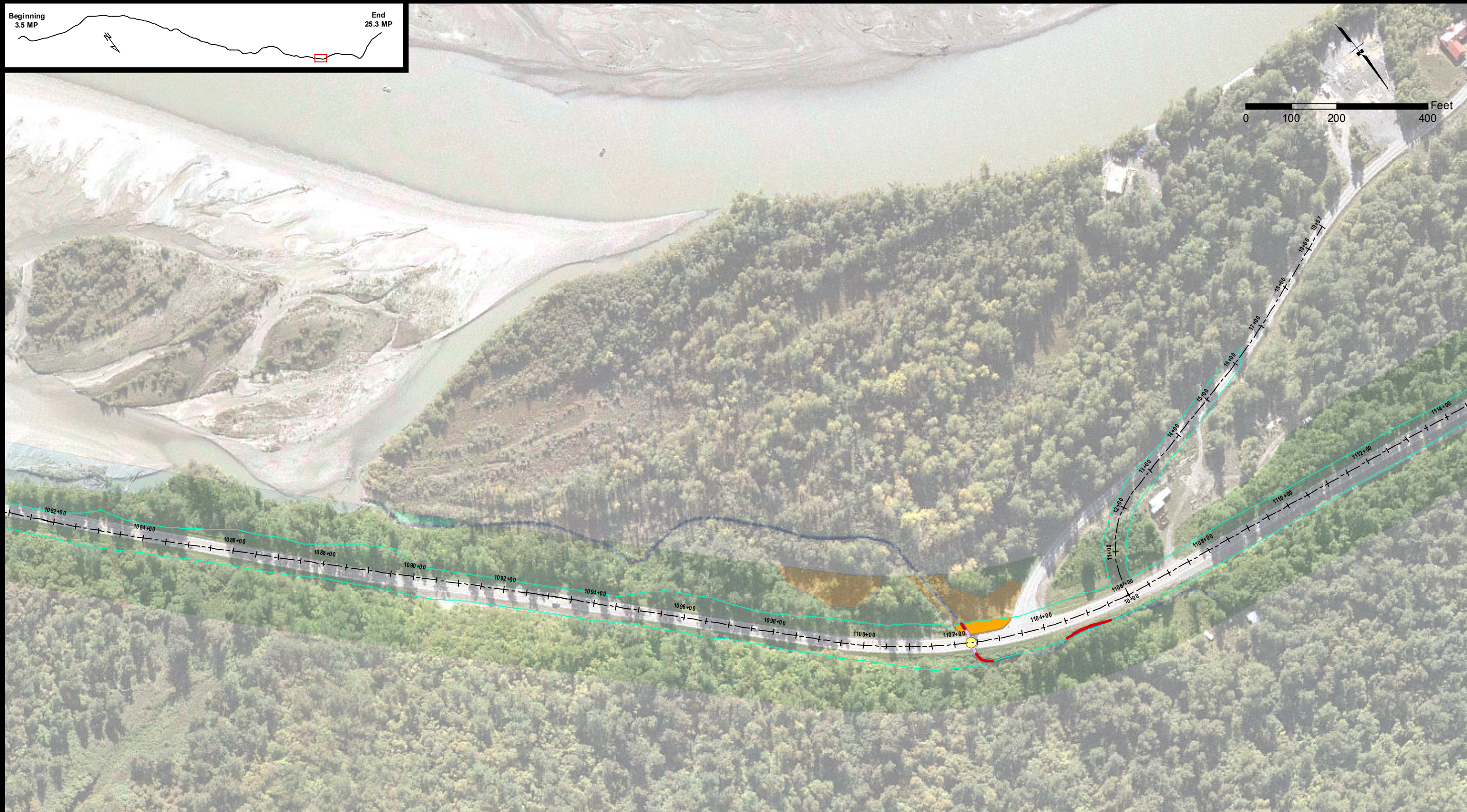
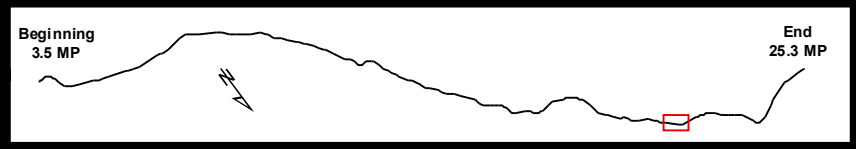
**WETLAND IMPACTS
AND
PROPOSED STREAM MITIGATION**

TS 28/29/30 S, R 56/57/58/59 E,
Copper River Meridian, Alaska



STATE OF ALASKA
DEPARTMENT OF TRANSPORTATION
AND PUBLIC FACILITIES
DOT & PF Project No. 68606
HAINES HIGHWAY
MILEPOST 3.5 - 25.3
Haines, Alaska

DATE: April 26, 2013 Figure Set C (27 OF 34)



- | | | | |
|--------|--|----------------------------|-------------------------------|
| Stream | Mile Post Points | Existing Streams | Cut (Enhanced) |
| PEM1B | <i>*Darker wetland colors show impacted wetlands. Lighter wetland colors show the extent of wetlands mapped within the 2006 study area. Reference EA acronym list for NWI types.</i> | Existing Slough / Drainage | Grade Control |
| PEM1H | | Proposed New Stream | Protected Vegetation |
| PFO1C | | Stream Impacts | Revegetation (Enhanced) |
| PSS1B | | Abandoned Culvert | Egg Incubation Box |
| PSS1E | | Extended Culvert | Proposed New Culvert Crossing |
| PSS1H | | Upgraded Fish Culvert | Rootwads |
| R3OW | | Upgraded Debris Culvert | |
| Upland | | Fish Passage Culverts | |

WETLAND IMPACTS AND PROPOSED STREAM MITIGATION

TS 28/29/30 S, R 56/57/58/59 E,
Copper River Meridian, Alaska

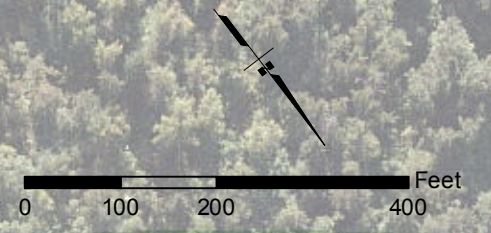
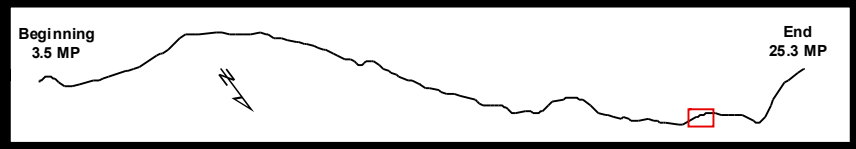


STATE OF ALASKA
DEPARTMENT OF TRANSPORTATION
AND PUBLIC FACILITIES
DOT & PF Project No. 68606
HAINES HIGHWAY
MILEPOST 3.5 - 25.3

Haines, Alaska

DATE: April 26, 2013

Figure Set C (28 OF 34)



- | | | | |
|--------|--|----------------------------|-------------------------------|
| Stream | Cut & Fill Limits | Existing Streams | Cut (Enhanced) |
| PEM1B | Mile Post Points | Existing Slough / Drainage | Grade Control |
| PEM1H | <i>*Darker wetland colors show impacted wetlands. Lighter wetland colors show the extent of wetlands mapped within the 2006 study area. Reference EA acronym list for NWI types.</i> | Proposed New Stream | Protected Vegetation |
| PFO1C | | Stream Impacts | Revegetation (Enhanced) |
| PSS1B | | Abandoned Culvert | Egg Incubation Box |
| PSS1E | | Extended Culvert | Proposed New Culvert Crossing |
| PSS1H | | Upgraded Fish Culvert | Rootwads |
| R3OW | | Upgraded Debris Culvert | |
| Upland | | Fish Passage Culverts | |

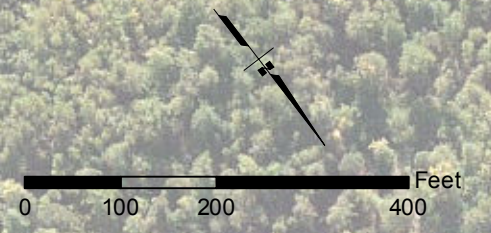
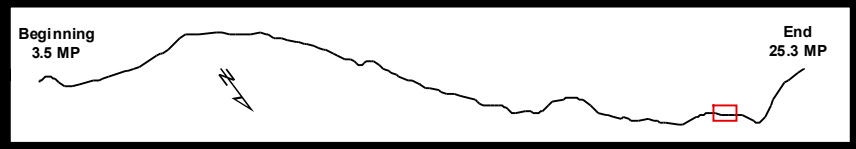
**WETLAND IMPACTS
AND
PROPOSED STREAM MITIGATION**

TS 28/29/30 S, R 56/57/58/59 E,
Copper River Meridian, Alaska



STATE OF ALASKA
DEPARTMENT OF TRANSPORTATION
AND PUBLIC FACILITIES
DOT & PF Project No. 68606
HAINES HIGHWAY
MILEPOST 3.5 - 25.3
Haines, Alaska

DATE: April 26, 2013 Figure Set C (29 OF 34)



Stream	Cut & Fill Limits	Existing Streams	Cut (Enhanced)
PEM1B	Mile Post Points	Existing Slough / Drainage	Grade Control
PEM1H	<i>*Darker wetland colors show impacted wetlands. Lighter wetland colors show the extent of wetlands mapped within the 2006 study area. Reference EA acronym list for NWI types.</i>	Proposed New Stream	Protected Vegetation
PFO1C		Stream Impacts	Revegetation (Enhanced)
PSS1B		Abandoned Culvert	Egg Incubation Box
PSS1E		Extended Culvert	Proposed New Culvert Crossing
PSS1H		Upgraded Fish Culvert	Rootwads
R3OW		Upgraded Debris Culvert	
Upland		Fish Passage Culverts	

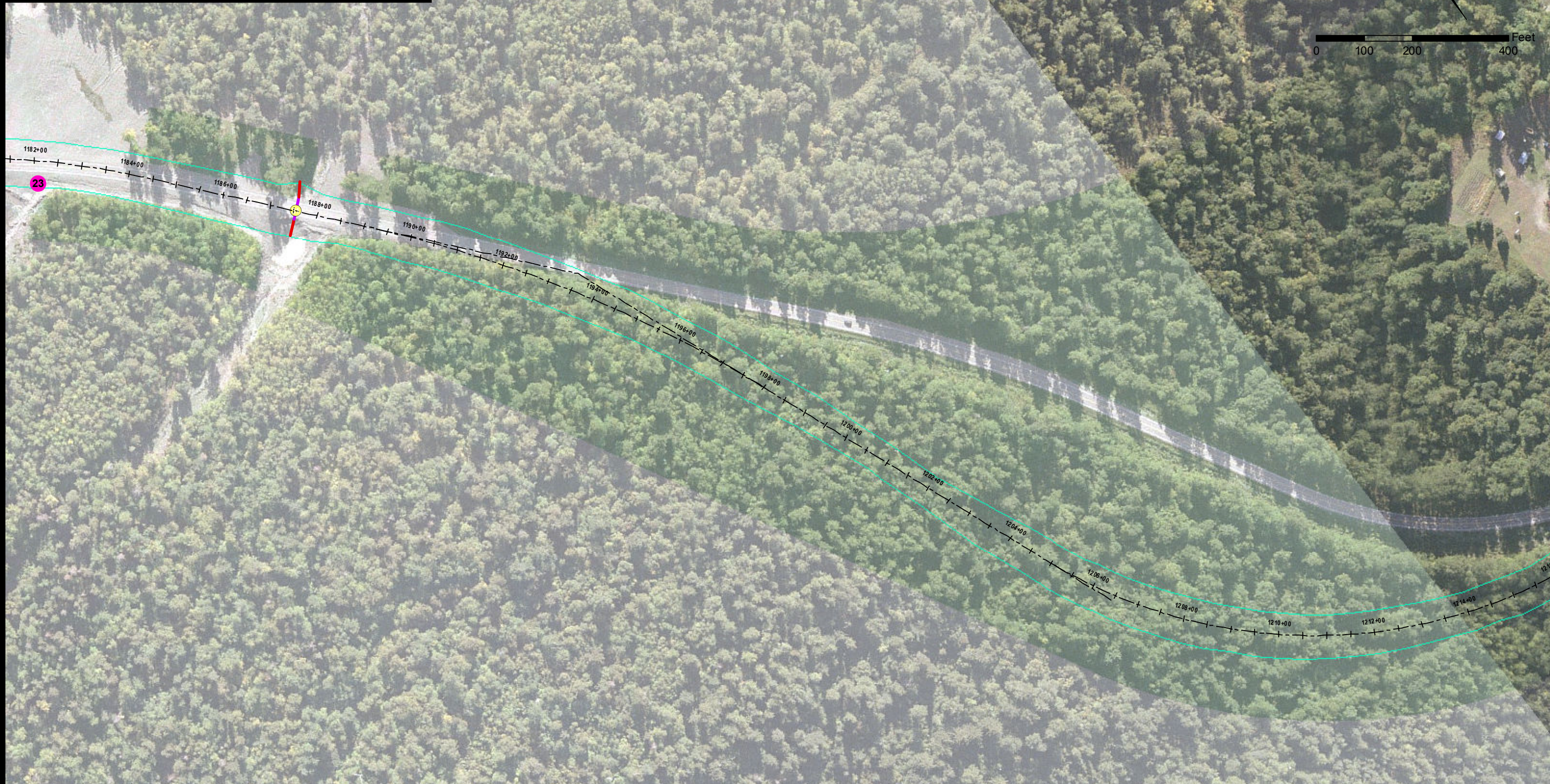
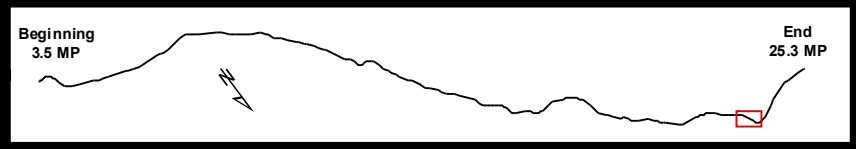
**WETLAND IMPACTS
AND
PROPOSED STREAM MITIGATION**

TS 28/29/30 S, R 56/57/58/59 E,
Copper River Meridian, Alaska



STATE OF ALASKA
DEPARTMENT OF TRANSPORTATION
AND PUBLIC FACILITIES
DOT & PF Project No. 68606
HAINES HIGHWAY
MILEPOST 3.5 - 25.3
Haines, Alaska

DATE: April 26, 2013 Figure Set C (30 OF 34)



Stream	Cut & Fill Limits	Existing Streams	Cut (Enhanced)
PEM1B	Mile Post Points	Existing Slough / Drainage	Grade Control
PEM1H	<i>*Darker wetland colors show impacted wetlands. Lighter wetland colors show the extent of wetlands mapped within the 2006 study area. Reference EA acronym list for NWI types.</i>	Proposed New Stream	Protected Vegetation
PFO1C		Stream Impacts	Revegetation (Enhanced)
PSS1B		Abandoned Culvert	Egg Incubation Box
PSS1E		Extended Culvert	Proposed New Culvert Crossing
PSS1H		Upgraded Fish Culvert	Rootwads
R3OW		Upgraded Debris Culvert	
Upland		Fish Passage Culverts	

WETLAND IMPACTS AND PROPOSED STREAM MITIGATION

TS 28/29/30 S, R 56/57/58/59 E,
Copper River Meridian, Alaska

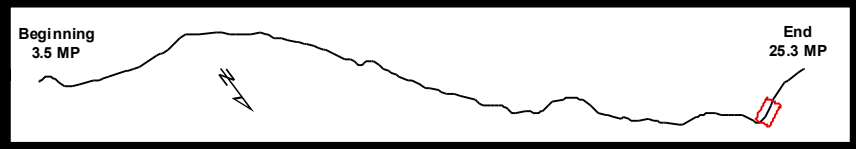


STATE OF ALASKA
DEPARTMENT OF TRANSPORTATION
AND PUBLIC FACILITIES
DOT & PF Project No. 68606
HAINES HIGHWAY
MILEPOST 3.5 - 25.3

Haines, Alaska

DATE: April 26, 2013

Figure Set C (31 OF 34)



- | | | | |
|--------|--|----------------------------|-------------------------------|
| Stream | Cut & Fill Limits | Existing Streams | Cut (Enhanced) |
| PEM1B | Mile Post Points | Existing Slough / Drainage | Grade Control |
| PEM1H | <i>*Darker wetland colors show impacted wetlands. Lighter wetland colors show the extent of wetlands mapped within the 2006 study area. Reference EA acronym list for NWI types.</i> | Proposed New Stream | Protected Vegetation |
| PFO1C | | Stream Impacts | Revegetation (Enhanced) |
| PSS1B | | Abandoned Culvert | Egg Incubation Box |
| PSS1E | | Extended Culvert | Proposed New Culvert Crossing |
| PSS1H | | Upgraded Fish Culvert | Rootwads |
| R3OW | | Upgraded Debris Culvert | |
| Upland | | Fish Passage Culverts | |

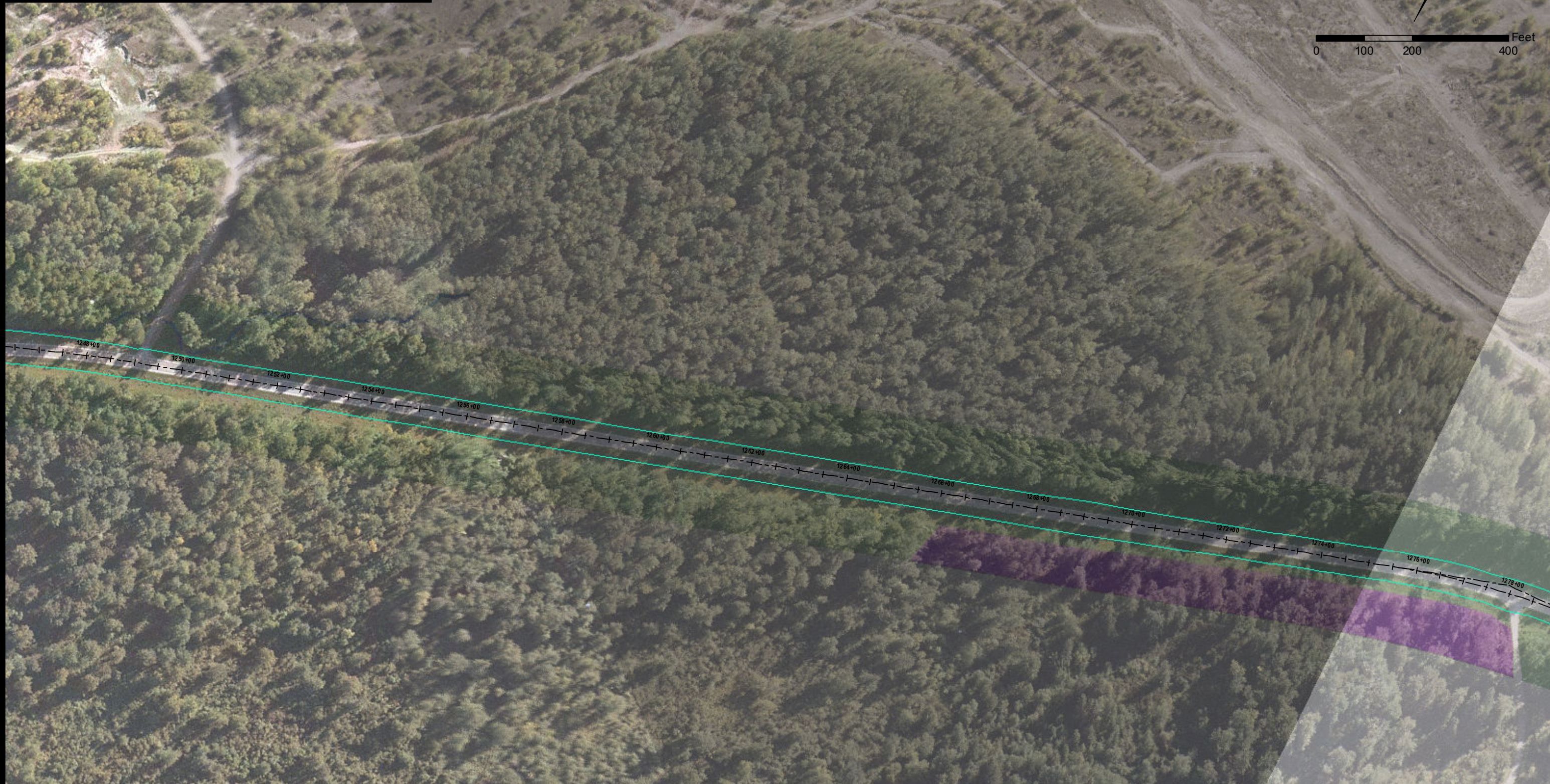
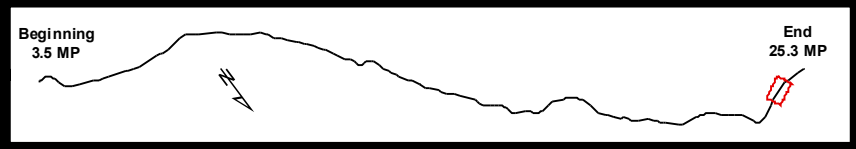
**WETLAND IMPACTS
AND
PROPOSED STREAM MITIGATION**

TS 28/29/30 S, R 56/57/58/59 E,
Copper River Meridian, Alaska



STATE OF ALASKA
DEPARTMENT OF TRANSPORTATION
AND PUBLIC FACILITIES
DOT & PF Project No. 68606
HAINES HIGHWAY
MILEPOST 3.5 - 25.3
Haines, Alaska

DATE: April 26, 2013 Figure Set C (32 OF 34)



Stream	Cut & Fill Limits	Existing Streams	Cut (Enhanced)
PEM1B	Mile Post Points	Existing Slough / Drainage	Grade Control
PEM1H	<i>*Darker wetland colors show impacted wetlands. Lighter wetland colors show the extent of wetlands mapped within the 2006 study area. Reference EA acronym list for NWI types.</i>	Proposed New Stream	Protected Vegetation
PFO1C		Stream Impacts	Revegetation (Enhanced)
PSS1B		Abandoned Culvert	Egg Incubation Box
PSS1E		Extended Culvert	Proposed New Culvert Crossing
PSS1H		Upgraded Fish Culvert	Rootwads
R3OW		Upgraded Debris Culvert	
Upland		Fish Passage Culverts	

**WETLAND IMPACTS
AND
PROPOSED STREAM MITIGATION**

TS 28/29/30 S, R 56/57/58/59 E,
Copper River Meridian, Alaska

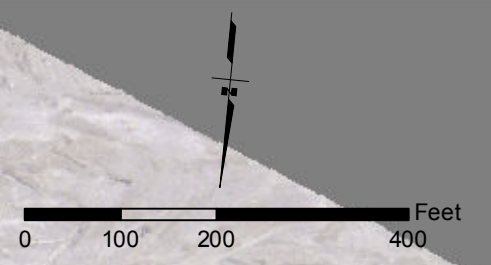
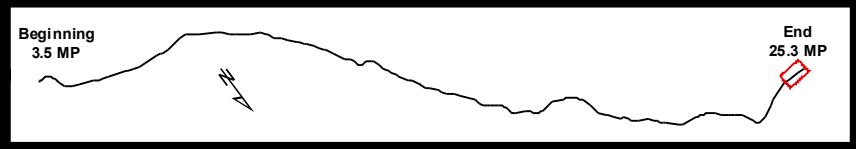


STATE OF ALASKA
DEPARTMENT OF TRANSPORTATION
AND PUBLIC FACILITIES

DOT & PF Project No. 68606
HAINES HIGHWAY
MILEPOST 3.5 - 25.3

Haines, Alaska

DATE: April 26, 2013	Figure Set C (33 OF 34)
----------------------	-------------------------



Stream	Cut & Fill Limits	Existing Streams	Cut (Enhanced)
PEM1B	Mile Post Points	Existing Slough / Drainage	Grade Control
PEM1H	<i>*Darker wetland colors show impacted wetlands. Lighter wetland colors show the extent of wetlands mapped within the 2006 study area. Reference EA acronym list for NWI types.</i>	Proposed New Stream	Protected Vegetation
PFO1C		Stream Impacts	Revegetation (Enhanced)
PSS1B		Abandoned Culvert	Egg Incubation Box
PSS1E		Extended Culvert	Proposed New Culvert Crossing
PSS1H		Upgraded Fish Culvert	Rootwads
R3OW		Upgraded Debris Culvert	
Upland		Fish Passage Culverts	

**WETLAND IMPACTS
AND
PROPOSED STREAM MITIGATION**

TS 28/29/30 S, R 56/57/58/59 E,
Copper River Meridian, Alaska



STATE OF ALASKA
DEPARTMENT OF TRANSPORTATION
AND PUBLIC FACILITIES
DOT & PF Project No. 68606
HAINES HIGHWAY
MILEPOST 3.5 - 25.3
Haines, Alaska

DATE: April 26, 2013 Figure Set C (34 OF 34)