

- | | | |
|---------------------|-------------------------------------|----------------------------|
| Wetland Type | --- Proposed Centerline | --- Existing Streams |
| PEM1H | ▭ Proposed Cut & Fill Limits | --- MP 4 Stream Relocation |
| PSS1H | ▭ Previous EA Cut & Fill Limits | --- Stream Impacts |
| R3OW | ● Mile Post Points | |
| | Ⓝ Chilkat River Impacted Polygon ID | |
| | Ⓝ Fish Passage Culvert # | |

Darker wetland colors show impacted wetlands. Lighter wetland colors show the extent of wetlands mapped within the 2006 study area. Reference EA acronym list for NWI types.

WETLAND IMPACTS AND PROPOSED STREAM MITIGATION

TS 28/29/30 S, R 56/57/58/59 E,
Copper River Meridian, Alaska

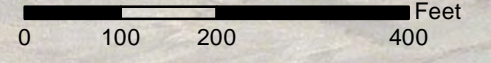
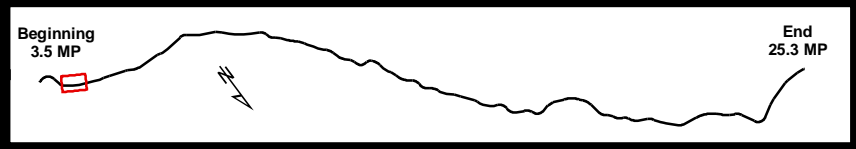


STATE OF ALASKA
DEPARTMENT OF TRANSPORTATION
AND PUBLIC FACILITIES
DOT & PF Project No. 68606
HAINES HIGHWAY
MILEPOST 3.5 - 25.3

Haines, Alaska

DATE: January 15, 2016

Figure Set D (01 OF 34)



Wetland Type		Proposed Centerline		Existing Streams	
PEM1H	Proposed Cut & Fill Limits	---	---	---	---
PSS1H	Previous EA Cut & Fill Limits	---	---	---	---
R3OW	Mile Post Points	---	---	---	---
	Chilkat River Impacted Polygon ID	---	---	---	---
	Fish Passage Culvert #	---	---	---	---

*Darker wetland colors show impacted wetlands. Lighter wetland colors show the extent of wetlands mapped within the 2006 study area. Reference EA acronym list for NWI types.

WETLAND IMPACTS AND PROPOSED STREAM MITIGATION

TS 28/29/30 S, R 56/57/58/59 E,
Copper River Meridian, Alaska

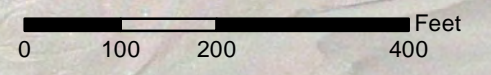
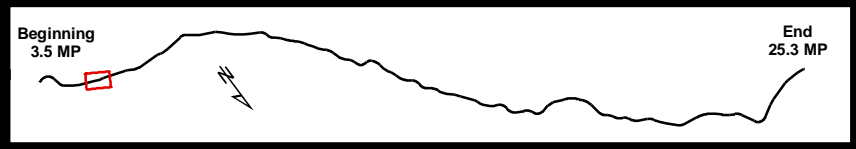


STATE OF ALASKA
DEPARTMENT OF TRANSPORTATION
AND PUBLIC FACILITIES
DOT & PF Project No. 68606
HAINES HIGHWAY
MILEPOST 3.5 - 25.3

Haines, Alaska

DATE: January 15, 2016

Figure Set D (02 OF 34)



- | | | | |
|---------------------|-------------------------------------|----------------------|----------------------------|
| Wetland Type | --- Proposed Centerline | --- Existing Streams | In River Mitigation |
| PEM1B | Proposed Cut & Fill Limits | --- Stream Impacts | ● Ballasted Log Clusters |
| PEM1H | Previous EA Cut & Fill Limits | | |
| PSS1H | | | |
| R3OW | | | |
| | ● Mile Post Points | | |
| | Ⓝ Chilkat River Impacted Polygon ID | | |
| | Ⓝ Fish Passage Culvert # | | |

*Darker wetland colors show impacted wetlands. Lighter wetland colors show the extent of wetlands mapped within the 2006 study area. Reference EA acronym list for NWI types.

WETLAND IMPACTS AND PROPOSED STREAM MITIGATION

TS 28/29/30 S, R 56/57/58/59 E,
Copper River Meridian, Alaska

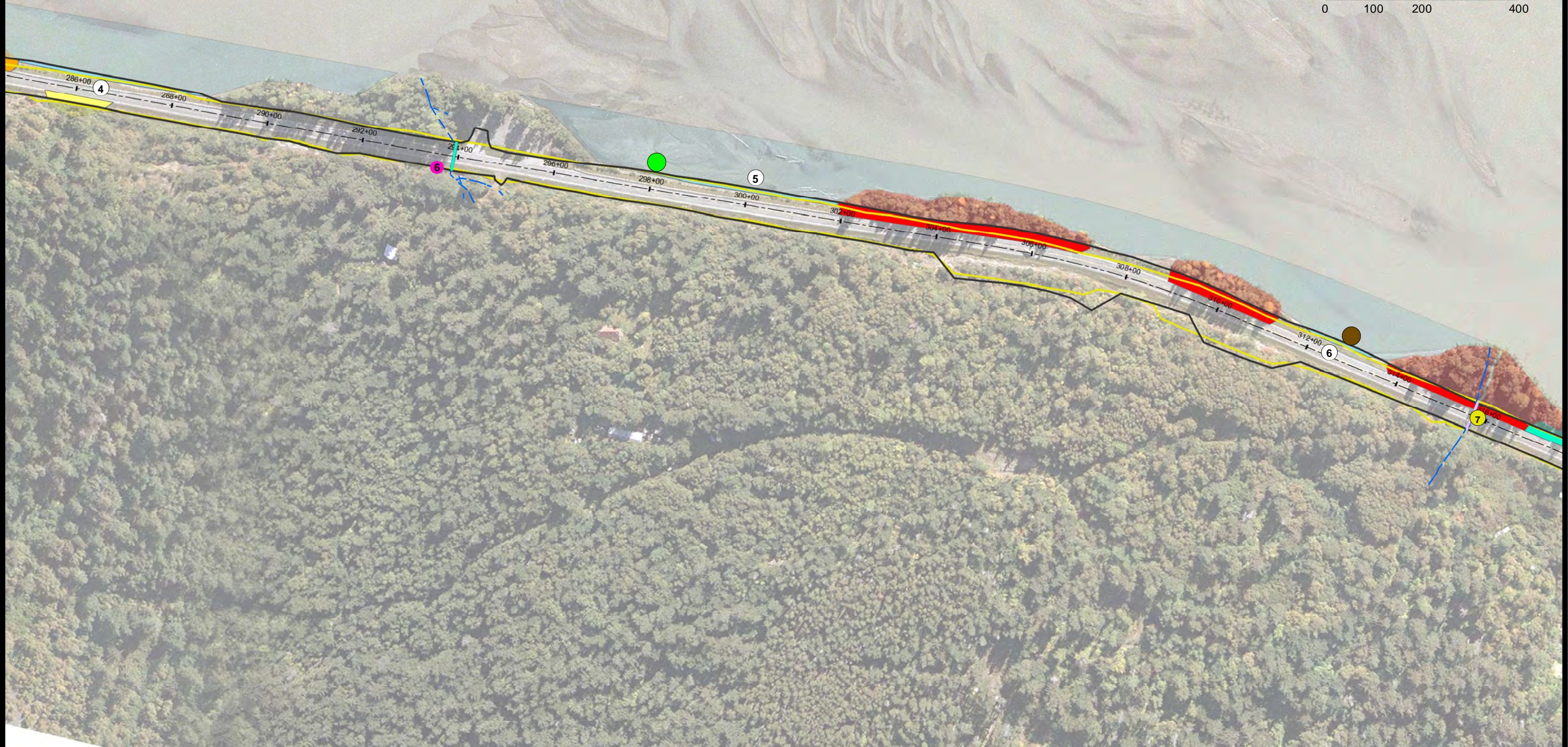
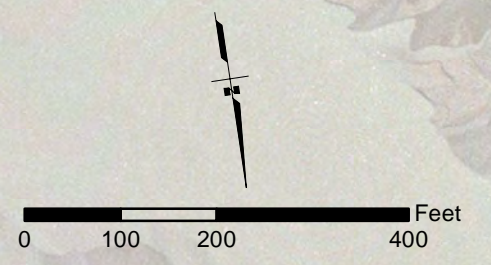
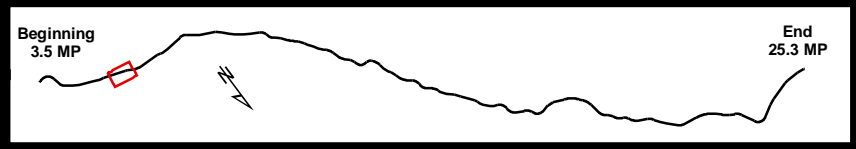


STATE OF ALASKA
DEPARTMENT OF TRANSPORTATION
AND PUBLIC FACILITIES
DOT & PF Project No. 68606
HAINES HIGHWAY
MILEPOST 3.5 - 25.3

Haines, Alaska

DATE: January 15, 2016

Figure Set D (03 OF 34)



Wetland Type	Proposed Centerline	Existing Streams	In River Mitigation
PEM1B	Proposed Cut & Fill Limits	Upgraded Culvert (non-anadromous streams)	Ballasted Log Clusters
PEM1H	Previous EA Cut & Fill Limits	Upgraded to Fish Passage Culvert	Vegetated River Protrusion
PFO1C	Mile Post Points		
PSS1H	Chilkat River Impacted Polygon ID		
R3OW	Fish Passage Culvert #		

*Darker wetland colors show impacted wetlands. Lighter wetland colors show the extent of wetlands mapped within the 2006 study area. Reference EA acronym list for NWI types.

WETLAND IMPACTS AND PROPOSED STREAM MITIGATION

TS 28/29/30 S, R 56/57/58/59 E,
Copper River Meridian, Alaska

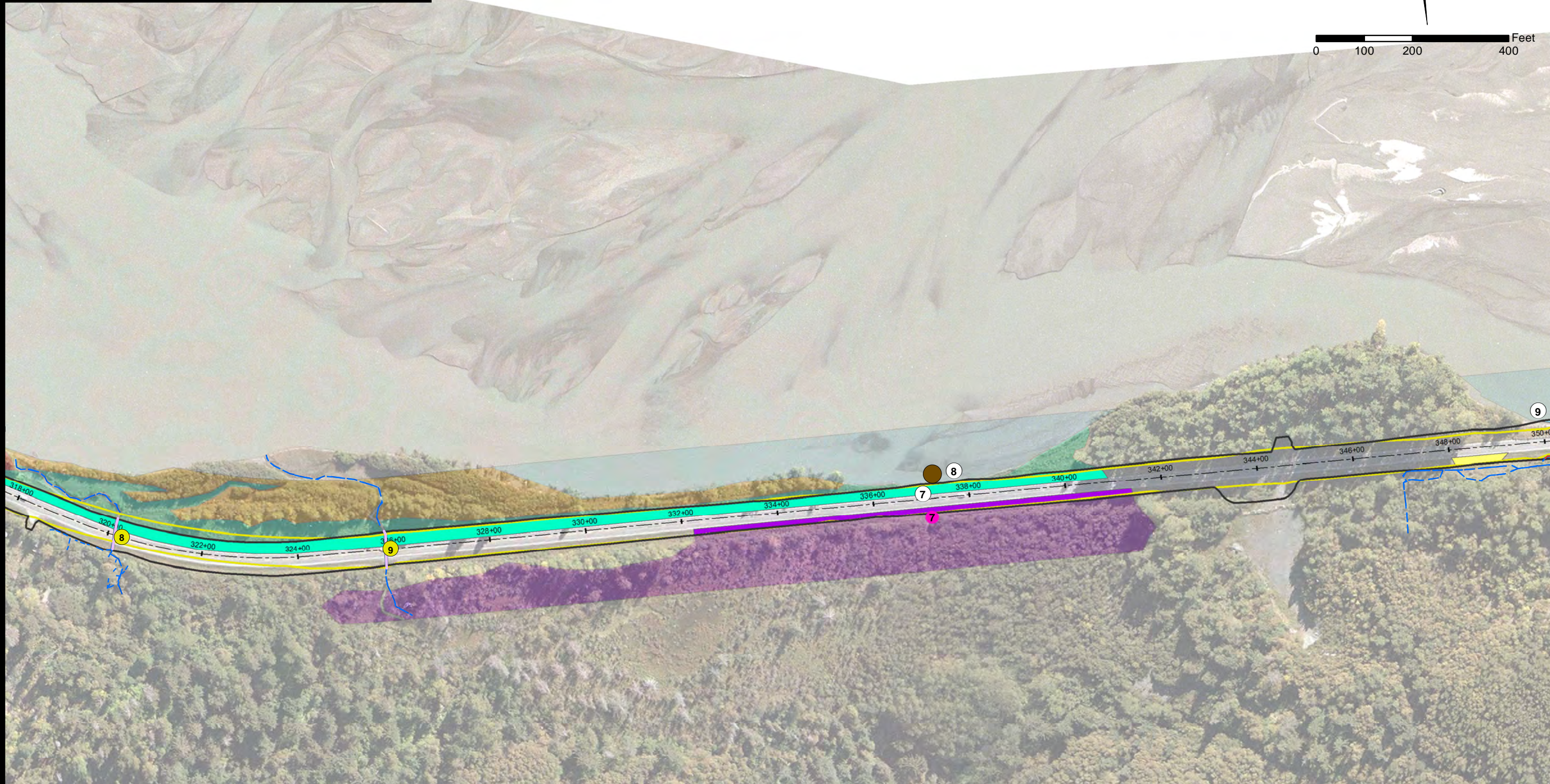
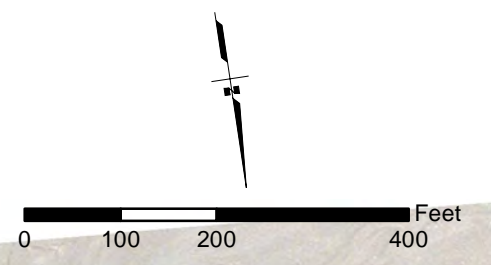
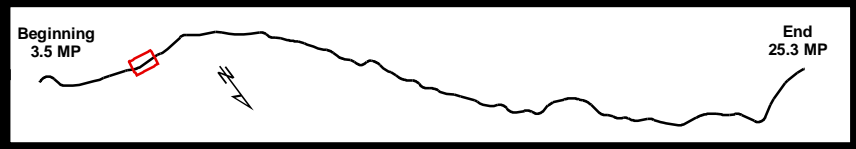


STATE OF ALASKA
DEPARTMENT OF TRANSPORTATION
AND PUBLIC FACILITIES
DOT & PF Project No. 68606
HAINES HIGHWAY
MILEPOST 3.5 - 25.3

Haines, Alaska

DATE: January 15, 2016

Figure Set D (04 OF 34)



Wetland Type	Proposed Centerline	Existing Streams	In River Mitigation
PEM1B	Proposed Cut & Fill Limits	Stream Impacts	Ballasted Log Clusters
PEM1H	Previous EA Cut & Fill Limits	Upgraded to Fish Passage Culvert	
PFO1C	Mile Post Points		
PSS1E	Chilkat River Impacted Polygon ID		
PSS1H	Fish Passage Culvert #		
R3OW			

*Darker wetland colors show impacted wetlands. Lighter wetland colors show the extent of wetlands mapped within the 2006 study area. Reference EA acronym list for NWI types.

WETLAND IMPACTS AND PROPOSED STREAM MITIGATION

TS 28/29/30 S, R 56/57/58/59 E,
Copper River Meridian, Alaska

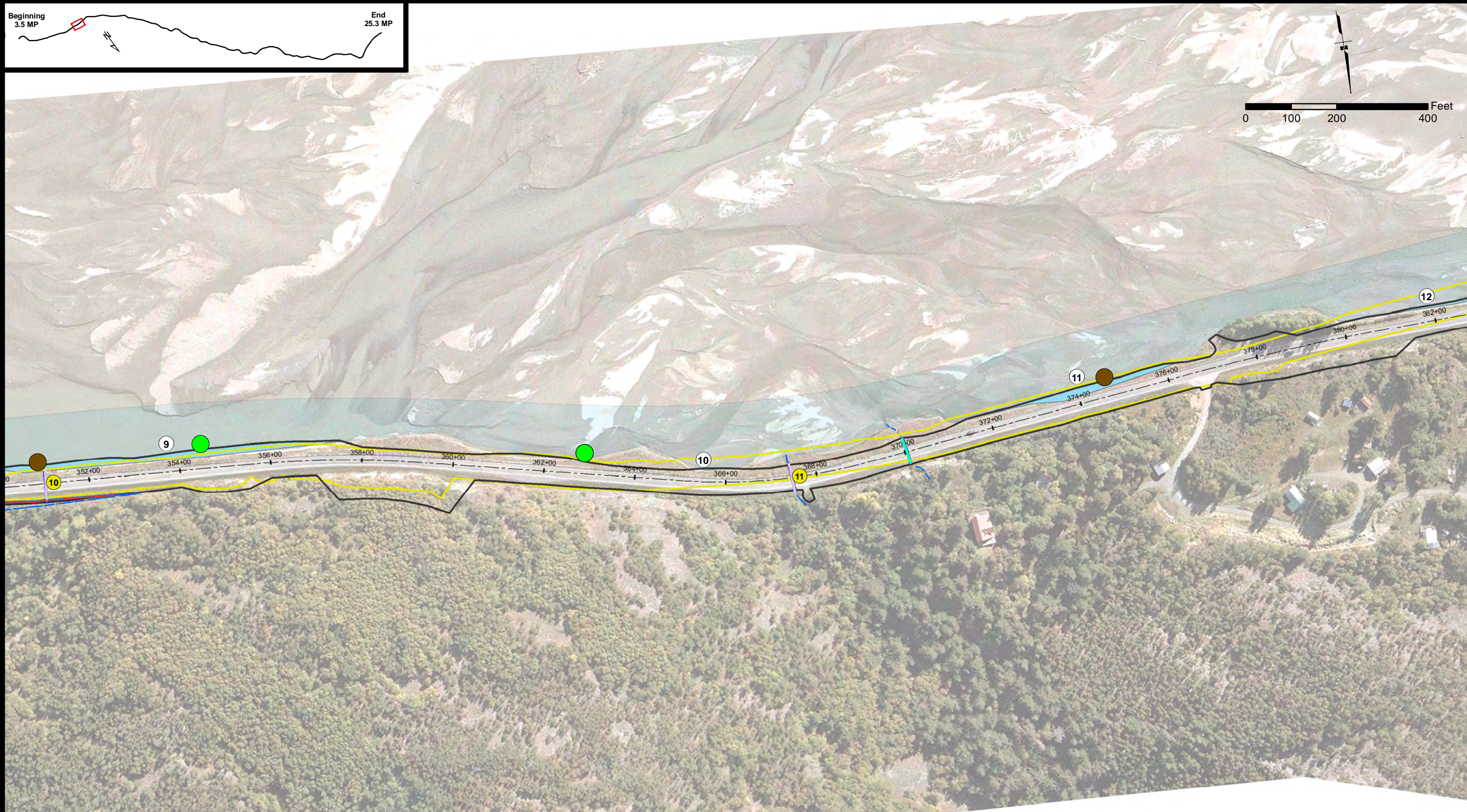
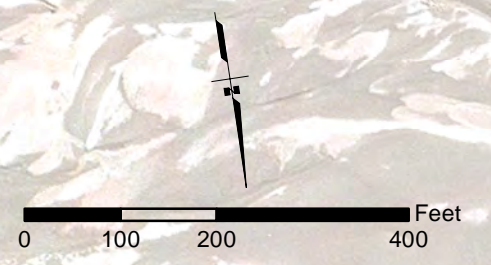
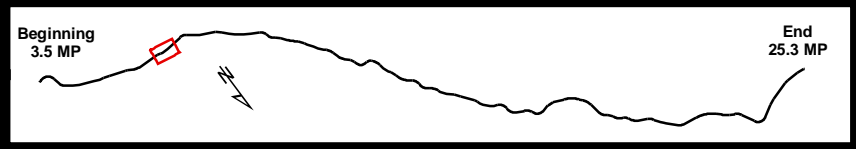


STATE OF ALASKA
DEPARTMENT OF TRANSPORTATION AND PUBLIC FACILITIES
DOT & PF Project No. 68606
HAINES HIGHWAY
MILEPOST 3.5 - 25.3

Haines, Alaska

DATE: January 15, 2016

Figure Set D (05 OF 34)



Wetland Type	--- Proposed Centerline	--- Existing Streams
■ R30W	▭ Proposed Cut & Fill Limits	--- Stream Impacts
	▭ Previous EA Cut & Fill Limits	--- Upgraded Culvert (non-anadromous streams)
● Mile Post Points	● Chilkat River Impacted Polygon ID	--- Upgraded to Fish Passage Culvert
● Fish Passage Culvert #		● Ballasted Log Clusters
		● Vegetated River Protrusion

*Darker wetland colors show impacted wetlands. Lighter wetland colors show the extent of wetlands mapped within the 2006 study area. Reference EA acronym list for NWI types.

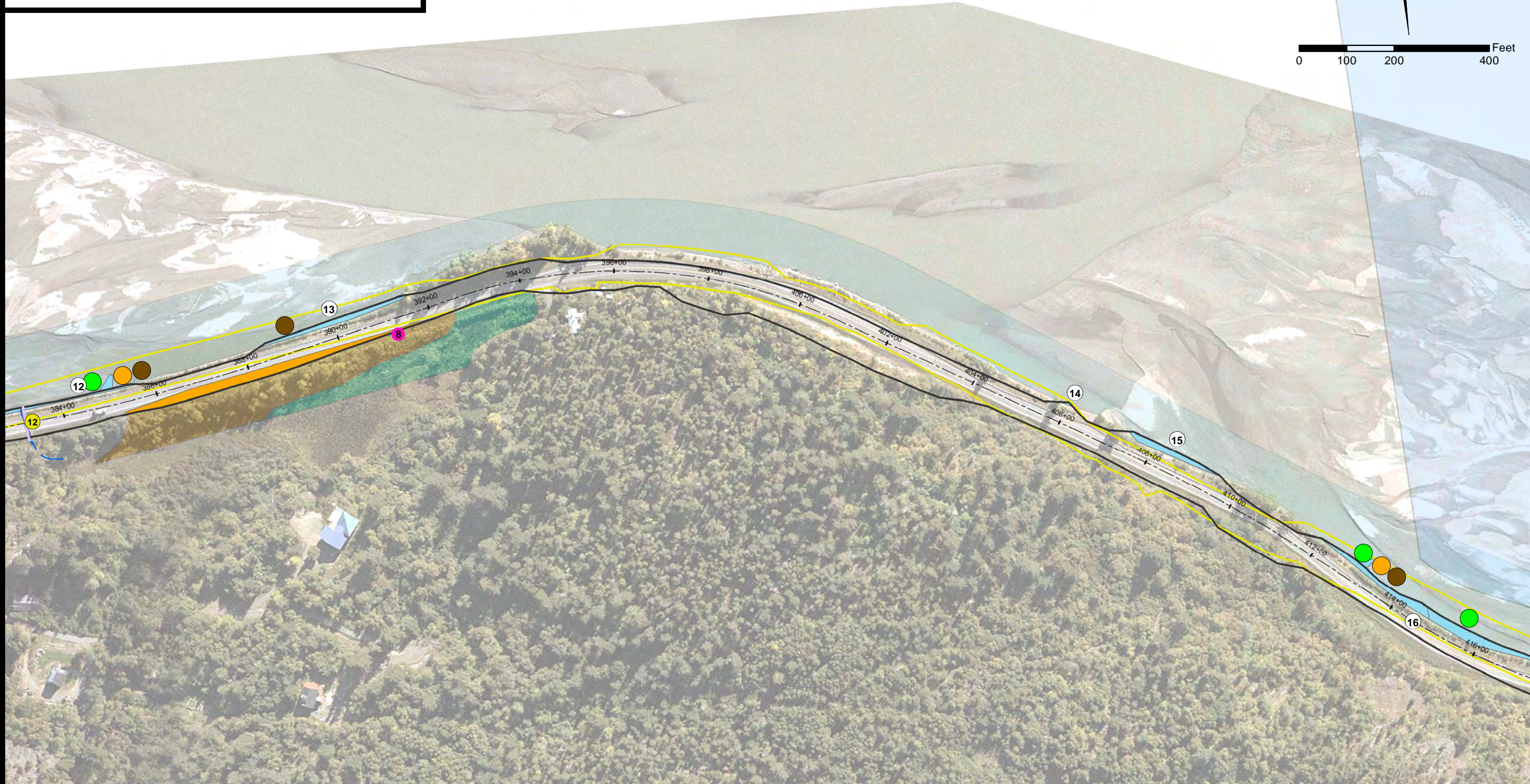
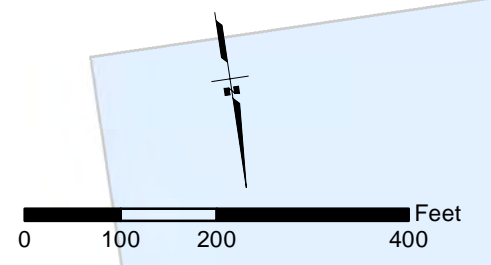
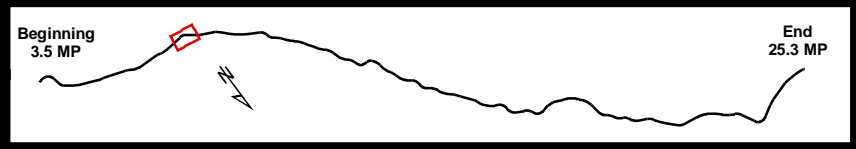
WETLAND IMPACTS AND PROPOSED STREAM MITIGATION

TS 28/29/30 S, R 56/57/58/59 E,
Copper River Meridian, Alaska



STATE OF ALASKA
DEPARTMENT OF TRANSPORTATION AND PUBLIC FACILITIES
DOT & PF Project No. 68606
HAINES HIGHWAY
MILEPOST 3.5 - 25.3
Haines, Alaska

DATE: January 15, 2016 Figure Set D (06 OF 34)



Wetland Type	Proposed Centerline	Existing Streams	In River Mitigation
PEM1H	Proposed Cut & Fill Limits	Upgraded to Fish Passage Culvert	Ballasted Log Clusters
PSS1H	Previous EA Cut & Fill Limits		Vegetated River Protrusion
R3OW	Mile Post Points		Fish Wheel Site
	Chilkat River Impacted Polygon ID		
	Fish Passage Culvert #		

*Darker wetland colors show impacted wetlands. Lighter wetland colors show the extent of wetlands mapped within the 2006 study area. Reference EA acronym list for NWI types.

WETLAND IMPACTS AND PROPOSED STREAM MITIGATION

TS 28/29/30 S, R 56/57/58/59 E,
Copper River Meridian, Alaska

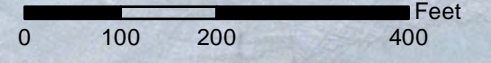
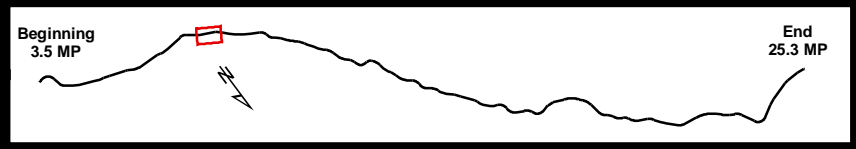


STATE OF ALASKA
DEPARTMENT OF TRANSPORTATION
AND PUBLIC FACILITIES
DOT & PF Project No. 68606
HAINES HIGHWAY
MILEPOST 3.5 - 25.3

Haines, Alaska

DATE: January 15, 2016

Figure Set D (07 OF 34)



- | | | |
|-------------------------------------|---------------------------------|---|
| Wetland Type | --- Proposed Centerline | --- Existing Streams |
| ■ R30W | ▭ Proposed Cut & Fill Limits | ▭ Upgraded Culvert (non-anadromous streams) |
| | ▭ Previous EA Cut & Fill Limits | |
| ● Mile Post Points | | |
| # Chilkat River Impacted Polygon ID | | |
| # Fish Passage Culvert # | | |

- In River Mitigation**
- Ballasted Log Clusters
 - Vegetated River Protrusion
 - Fish Wheel Site

*Darker wetland colors show impacted wetlands. Lighter wetland colors show the extent of wetlands mapped within the 2006 study area. Reference EA acronym list for NWI types.

WETLAND IMPACTS AND PROPOSED STREAM MITIGATION

TS 28/29/30 S, R 56/57/58/59 E,
Copper River Meridian, Alaska

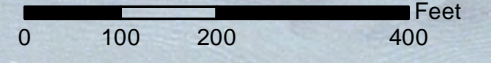
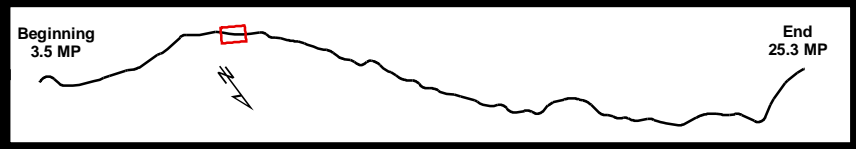


STATE OF ALASKA
DEPARTMENT OF TRANSPORTATION
AND PUBLIC FACILITIES
DOT & PF Project No. 68606
HAINES HIGHWAY
MILEPOST 3.5 - 25.3

Haines, Alaska

DATE: January 15, 2016

Figure Set D (08 OF 34)



Wetland Type	Proposed Centerline	Existing Streams	In River Mitigation
PFO1C	Proposed Cut & Fill Limits		Ballasted Log Clusters
PSS1H	Previous EA Cut & Fill Limits		Vegetated River Protrusion
R3OW			Fish Wheel Site
	Mile Post Points		
	Chilkat River Impacted Polygon ID		
	Fish Passage Culvert #		

*Darker wetland colors show impacted wetlands. Lighter wetland colors show the extent of wetlands mapped within the 2006 study area. Reference EA acronym list for NWI types.

WETLAND IMPACTS AND PROPOSED STREAM MITIGATION

TS 28/29/30 S, R 56/57/58/59 E,
Copper River Meridian, Alaska

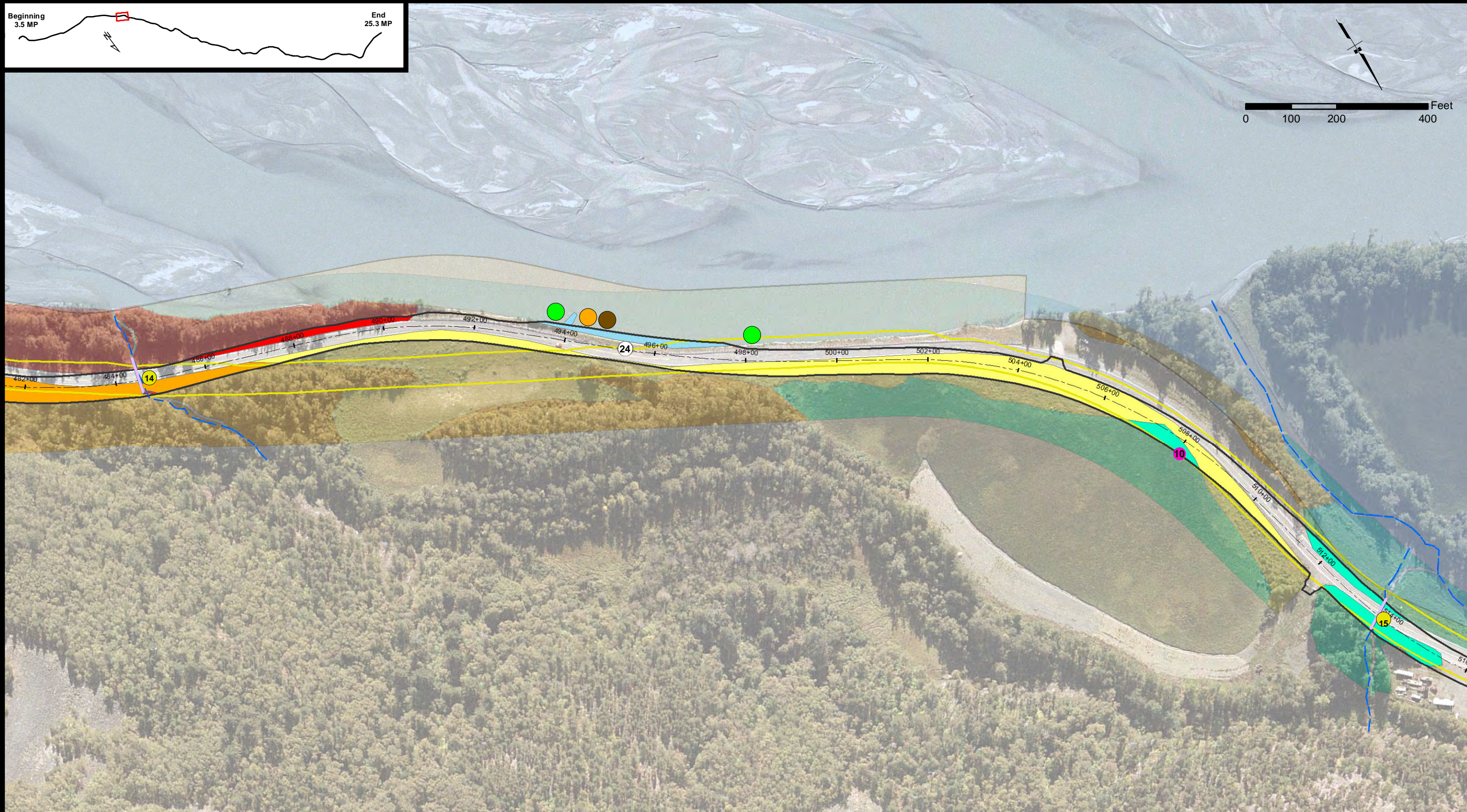
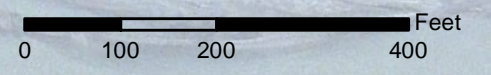


STATE OF ALASKA
DEPARTMENT OF TRANSPORTATION
AND PUBLIC FACILITIES
DOT & PF Project No. 68606
HAINES HIGHWAY
MILEPOST 3.5 - 25.3

Haines, Alaska

DATE: January 15, 2016

Figure Set D (09 OF 34)



Wetland Type	Proposed Centerline	Existing Streams	In River Mitigation
PEM1B	Proposed Cut & Fill Limits	Stream Impacts	Ballasted Log Clusters
PEM1H	Previous EA Cut & Fill Limits	Upgraded to	Vegetated River Protrusion
PFO1C	Mile Post Points	Fish Passage Culvert	Fish Wheel Site
PSS1H	Chilkat River Impacted Polygon ID		
R3OW	Fish Passage Culvert #		

*Darker wetland colors show impacted wetlands. Lighter wetland colors show the extent of wetlands mapped within the 2006 study area. Reference EA acronym list for NWI types.

WETLAND IMPACTS AND PROPOSED STREAM MITIGATION

TS 28/29/30 S, R 56/57/58/59 E,
Copper River Meridian, Alaska

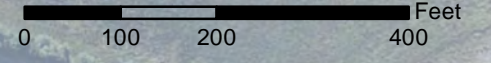
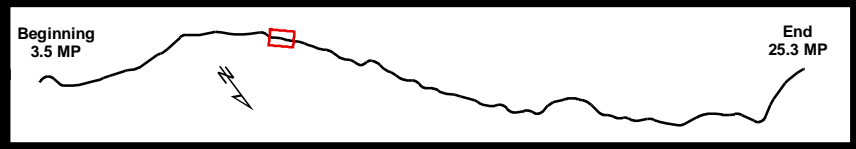


STATE OF ALASKA
DEPARTMENT OF TRANSPORTATION
AND PUBLIC FACILITIES
DOT & PF Project No. 68606
HAINES HIGHWAY
MILEPOST 3.5 - 25.3

Haines, Alaska

DATE: June 08, 2016

Figure Set D (10 OF 34)



- | | | |
|--------------------------|-------------------------------------|--------------------------------------|
| Wetland Type | --- Proposed Centerline | --- Existing Streams |
| PEM1H | ▭ Proposed Cut & Fill Limits | --- Proposed Stream Mitigation |
| PSS1H | ▭ Previous EA Cut & Fill Limits | --- Upgraded to Fish Passage Culvert |
| ● Mile Post Points | ● Chilkat River Impacted Polygon ID | ▨ Protected Vegetation |
| ● Fish Passage Culvert # | | |

*Darker wetland colors show impacted wetlands. Lighter wetland colors show the extent of wetlands mapped within the 2006 study area. Reference EA acronym list for NWI types.

WETLAND IMPACTS AND PROPOSED STREAM MITIGATION

TS 28/29/30 S, R 56/57/58/59 E,
Copper River Meridian, Alaska

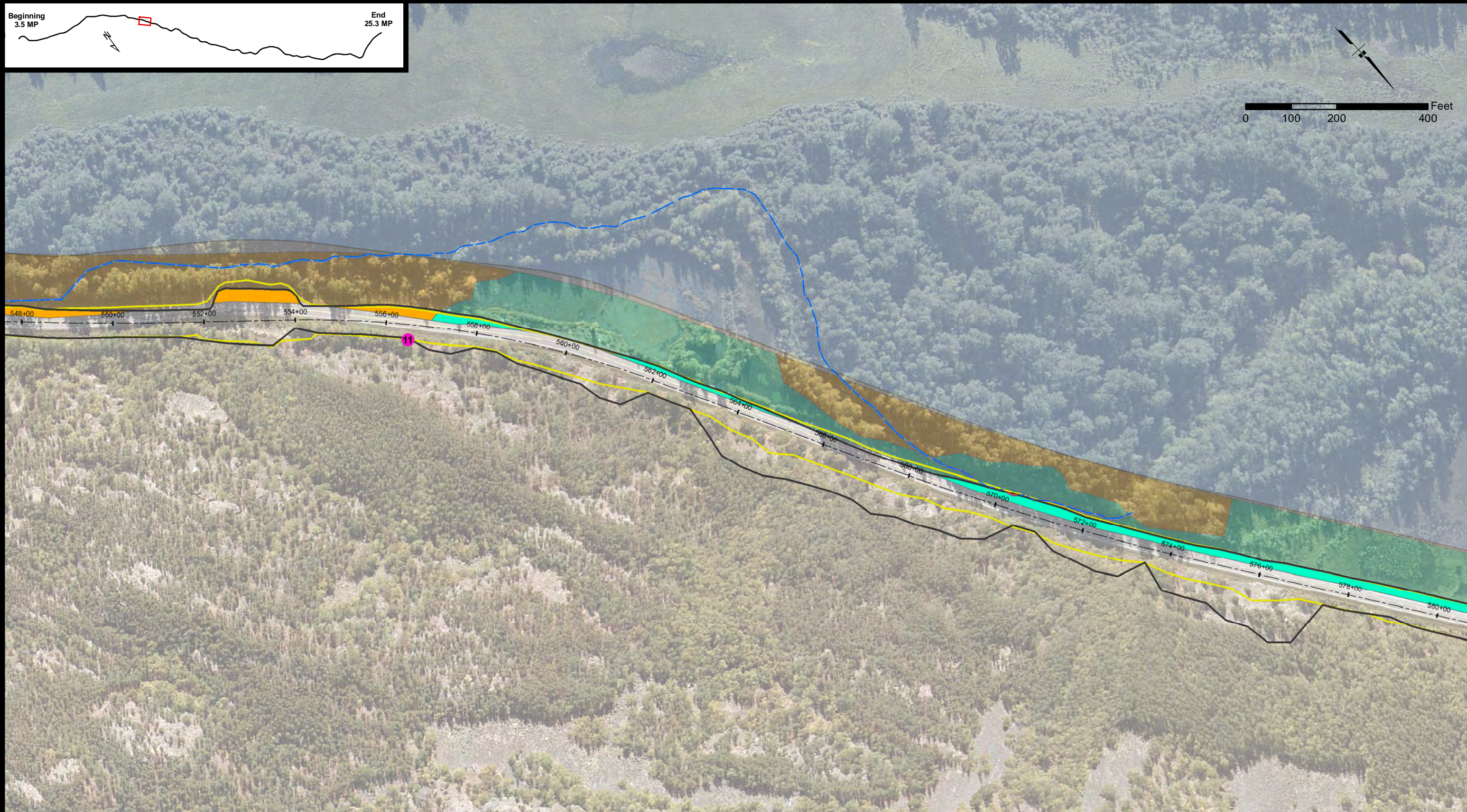
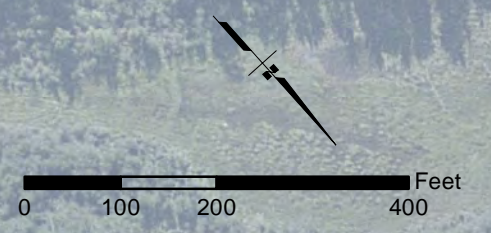
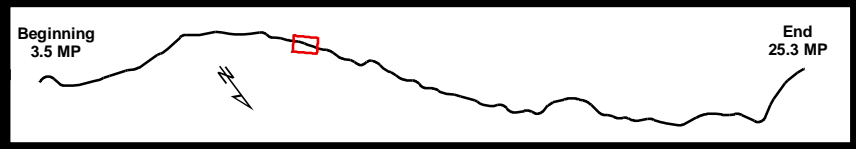


STATE OF ALASKA
DEPARTMENT OF TRANSPORTATION
AND PUBLIC FACILITIES
DOT & PF Project No. 68606
HAINES HIGHWAY
MILEPOST 3.5 - 25.3

Haines, Alaska

DATE: January 15, 2016

Figure Set D (11 OF 34)



- | | | |
|---------------------|-------------------------------------|----------------------|
| Wetland Type | --- Proposed Centerline | --- Existing Streams |
| PEM1H | ▭ Proposed Cut & Fill Limits | --- Stream Impacts |
| PSS1H | ▭ Previous EA Cut & Fill Limits | |
| | ● Mile Post Points | |
| | Ⓝ Chilkat River Impacted Polygon ID | |
| | Ⓝ Fish Passage Culvert # | |

*Darker wetland colors show impacted wetlands. Lighter wetland colors show the extent of wetlands mapped within the 2006 study area. Reference EA acronym list for NWI types.

WETLAND IMPACTS AND PROPOSED STREAM MITIGATION

TS 28/29/30 S, R 56/57/58/59 E,
Copper River Meridian, Alaska

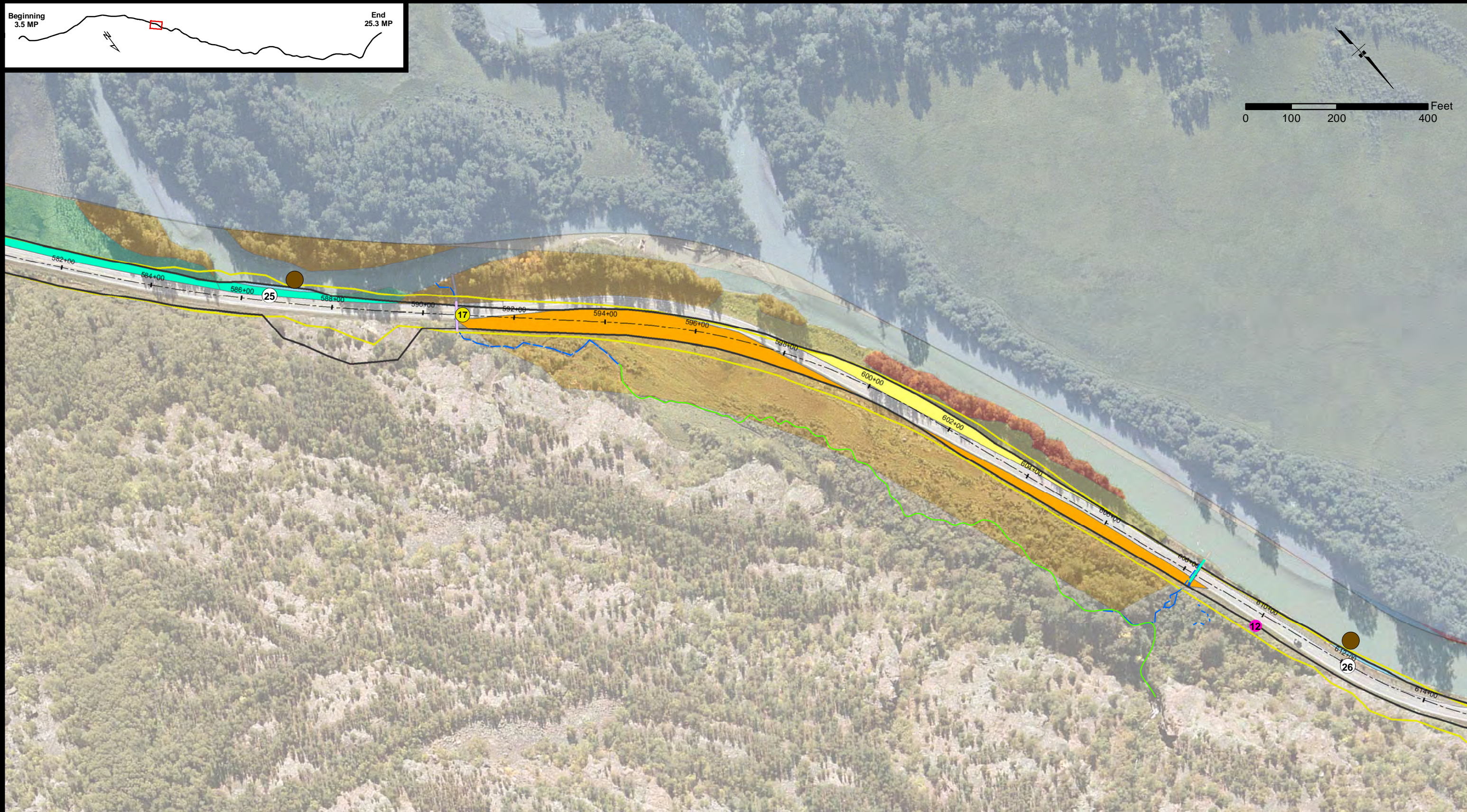
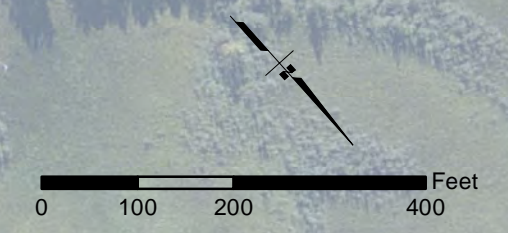
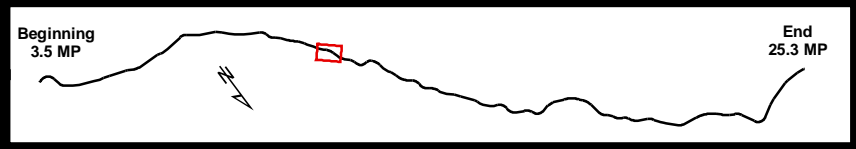


STATE OF ALASKA
DEPARTMENT OF TRANSPORTATION
AND PUBLIC FACILITIES
DOT & PF Project No. 68606
HAINES HIGHWAY
MILEPOST 3.5 - 25.3

Haines, Alaska

DATE: January 15, 2016

Figure Set D (12 OF 34)



Wetland Type		Proposed Centerline		Existing Streams		In River Mitigation	
PEM1B	PEM1H	Proposed Centerline	Proposed Cut & Fill Limits	Existing Streams	Proposed Stream Mitigation	Ballasted Log Clusters	
PFO1C	PSS1H	Proposed Cut & Fill Limits	Previous EA Cut & Fill Limits	Upgraded Culvert (non-anadromous streams)	Upgraded to Fish Passage Culvert		
R3OW		Mile Post Points	Chilkat River Impacted Polygon ID				
		Fish Passage Culvert #					

**Darker wetland colors show impacted wetlands. Lighter wetland colors show the extent of wetlands mapped within the 2006 study area. Reference EA acronym list for NWI types.*

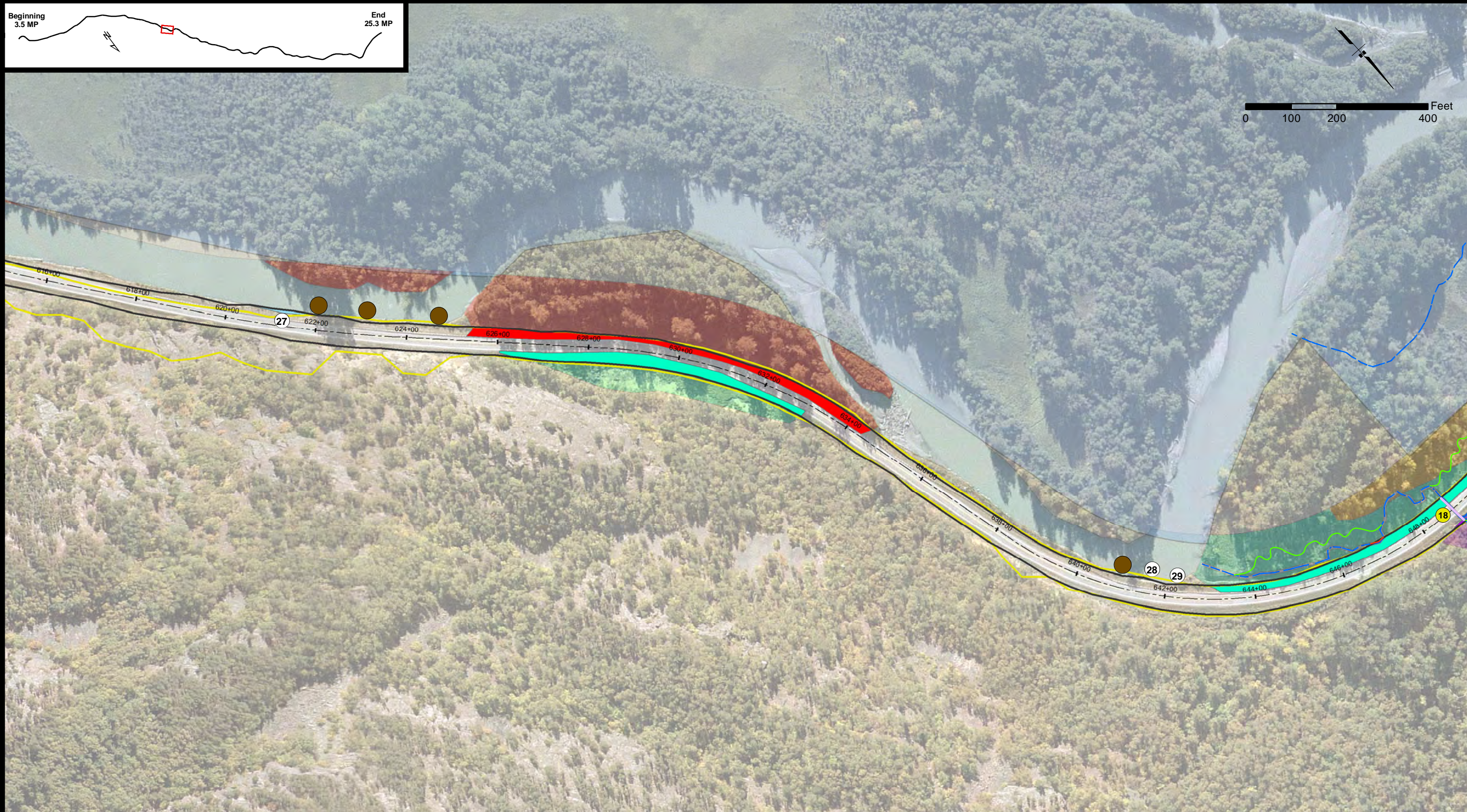
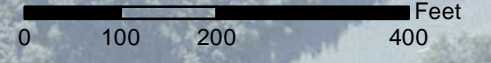
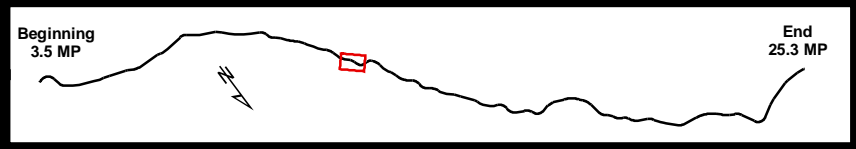
WETLAND IMPACTS AND PROPOSED STREAM MITIGATION

TS 28/29/30 S, R 56/57/58/59 E,
Copper River Meridian, Alaska



STATE OF ALASKA
DEPARTMENT OF TRANSPORTATION AND PUBLIC FACILITIES
DOT & PF Project No. 68606
HAINES HIGHWAY
MILEPOST 3.5 - 25.3
Haines, Alaska

DATE: January 15, 2016 Figure Set D (13 OF 34)



- | | | | |
|---------------------|-------------------------------------|--------------------------------------|----------------------------|
| Wetland Type | --- Proposed Centerline | --- Existing Streams | In River Mitigation |
| PEM1H | ▭ Proposed Cut & Fill Limits | --- Proposed Stream Mitigation | ● Ballasted Log Clusters |
| PFO1C | ▭ Previous EA Cut & Fill Limits | --- Stream Impacts | |
| PSS1E | ● Mile Post Points | --- Upgraded to Fish Passage Culvert | |
| PSS1H | # Chilkat River Impacted Polygon ID | | |
| R3OW | # Fish Passage Culvert # | | |

**Darker wetland colors show impacted wetlands. Lighter wetland colors show the extent of wetlands mapped within the 2006 study area. Reference EA acronym list for NWI types.*

WETLAND IMPACTS AND PROPOSED STREAM MITIGATION

TS 28/29/30 S, R 56/57/58/59 E,
Copper River Meridian, Alaska

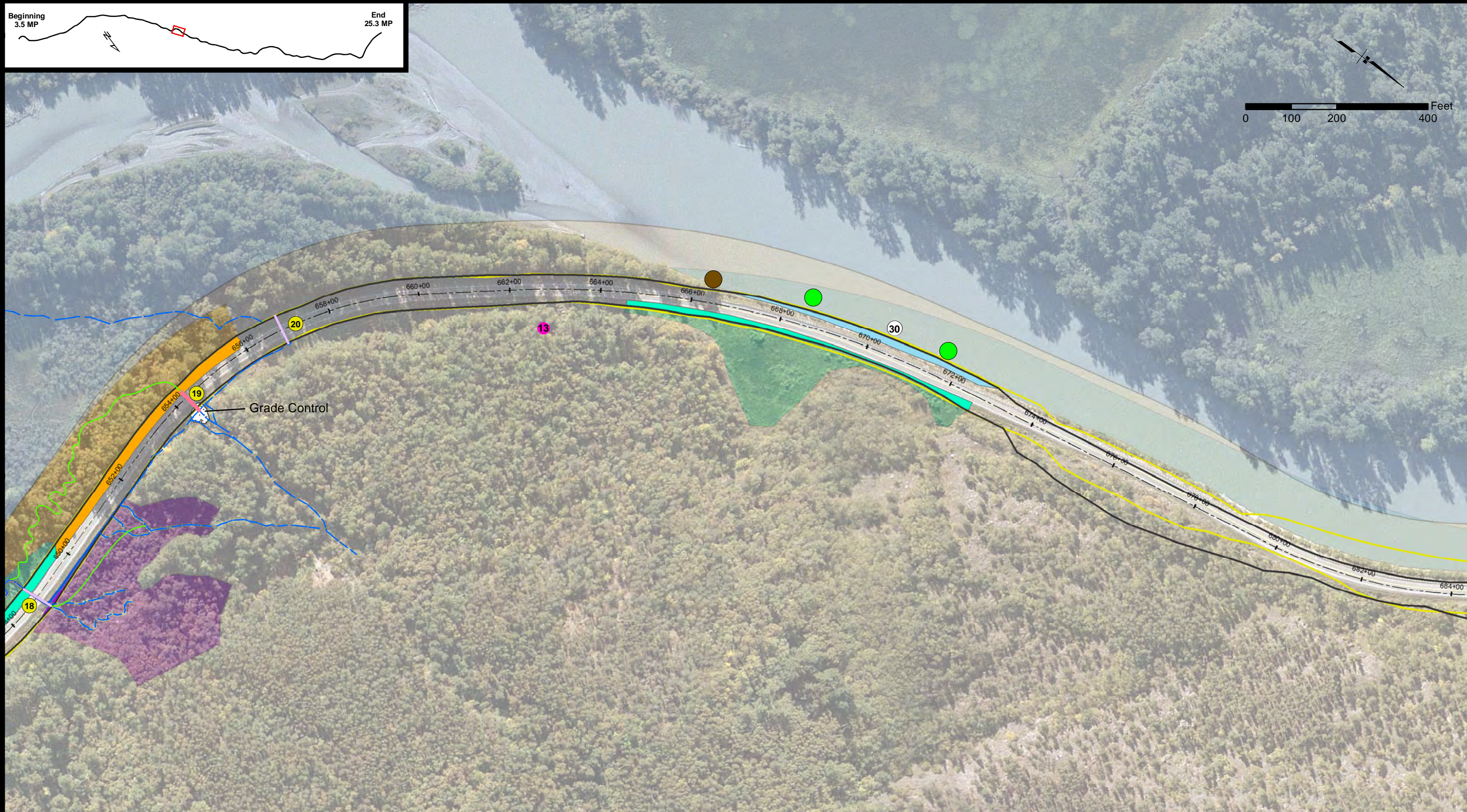
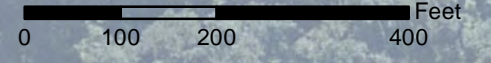
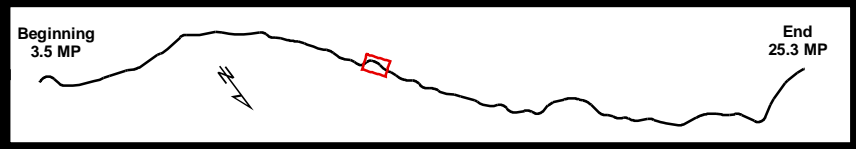


STATE OF ALASKA
DEPARTMENT OF TRANSPORTATION
AND PUBLIC FACILITIES
DOT & PF Project No. 68606
HAINES HIGHWAY
MILEPOST 3.5 - 25.3

Haines, Alaska

DATE: January 15, 2016

Figure Set D (14 OF 34)



Wetland Type	Proposed Centerline	Existing Streams	In River Mitigation
PEM1H	Proposed Cut & Fill Limits	New Fish Passage Culvert	Ballasted Log Clusters
PSS1E	Previous EA Cut & Fill Limits	Proposed Stream Mitigation	Vegetated River Protrusion
PSS1H	Mile Post Points	Upgraded to Fish Passage Culvert	
R3OW	Chilkat River Impacted Polygon ID	Grade Control	
	Fish Passage Culvert #		

*Darker wetland colors show impacted wetlands. Lighter wetland colors show the extent of wetlands mapped within the 2006 study area. Reference EA acronym list for NWI types.

WETLAND IMPACTS AND PROPOSED STREAM MITIGATION

TS 28/29/30 S, R 56/57/58/59 E,
Copper River Meridian, Alaska

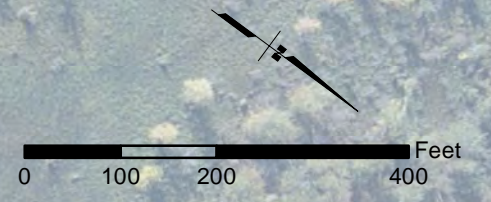
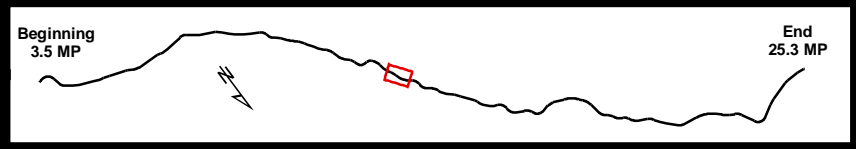


STATE OF ALASKA
DEPARTMENT OF TRANSPORTATION
AND PUBLIC FACILITIES
DOT & PF Project No. 68606
HAINES HIGHWAY
MILEPOST 3.5 - 25.3

Haines, Alaska

DATE: January 15, 2016

Figure Set D (15 OF 34)



Wetland Type	Proposed Centerline	Existing Streams	In River Mitigation
PEM1B	Proposed Cut & Fill Limits	Upgraded to Fish Passage Culvert	Ballasted Log Clusters
PEM1H	Previous EA Cut & Fill Limits		Improve Fish Habitat
PSS1H			Vegetated River Protrusion
R3OW			
	Mile Post Points		
	Chilkat River Impacted Polygon ID		
	Fish Passage Culvert #		

*Darker wetland colors show impacted wetlands. Lighter wetland colors show the extent of wetlands mapped within the 2006 study area. Reference EA acronym list for NWI types.

WETLAND IMPACTS AND PROPOSED STREAM MITIGATION

TS 28/29/30 S, R 56/57/58/59 E,
Copper River Meridian, Alaska

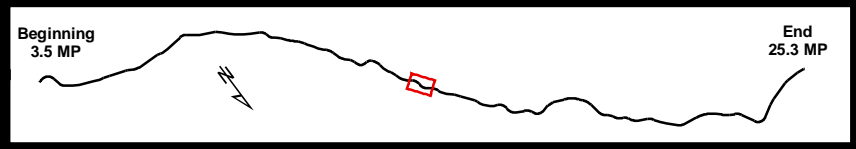


STATE OF ALASKA
DEPARTMENT OF TRANSPORTATION
AND PUBLIC FACILITIES
DOT & PF Project No. 68606
HAINES HIGHWAY
MILEPOST 3.5 - 25.3

Haines, Alaska

DATE: January 15, 2016

Figure Set D (16 OF 34)



Wetland Type	Proposed Centerline	Existing Streams	In River Mitigation
PEM1B	Proposed Cut & Fill Limits	Stream Impacts	Ballasted Log Clusters
PEM1H	Previous EA Cut & Fill Limits	Upgraded to Fish Passage Culvert	Improve Fish Habitat
PSS1H	Mile Post Points		
R3OW	Chilkat River Impacted Polygon ID		
	Fish Passage Culvert #		

Darker wetland colors show impacted wetlands. Lighter wetland colors show the extent of wetlands mapped within the 2006 study area. Reference EA acronym list for NWI types.

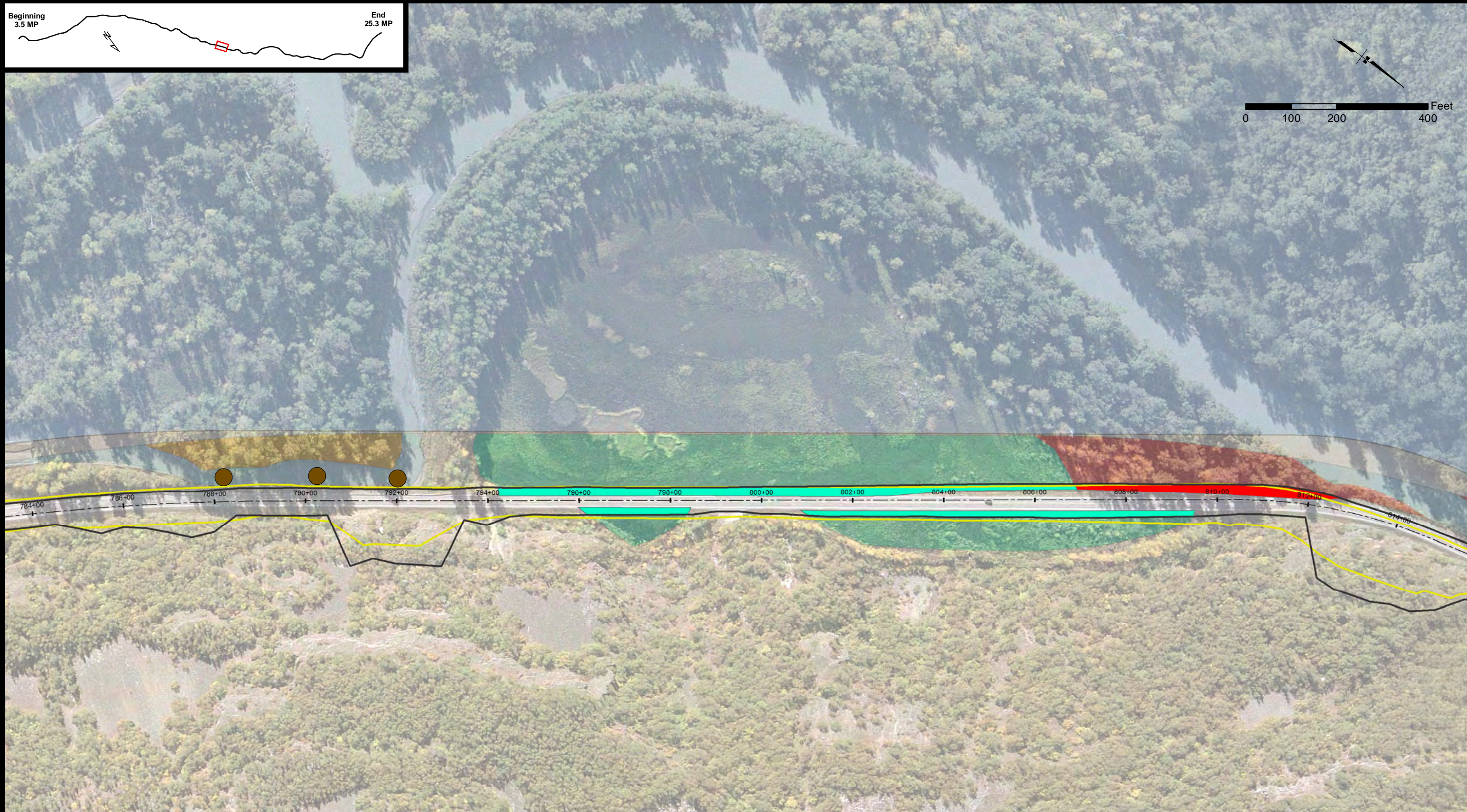
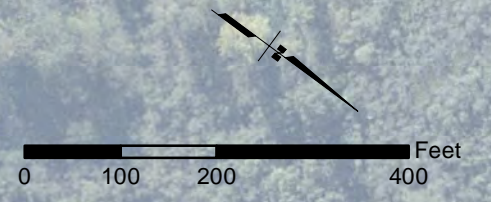
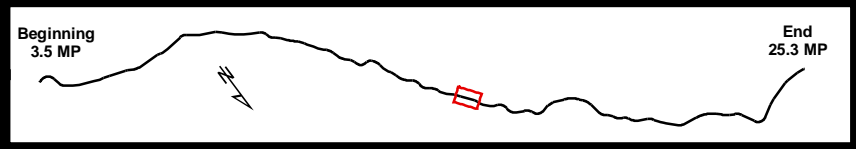
WETLAND IMPACTS AND PROPOSED STREAM MITIGATION

TS 28/29/30 S, R 56/57/58/59 E,
Copper River Meridian, Alaska



STATE OF ALASKA
DEPARTMENT OF TRANSPORTATION AND PUBLIC FACILITIES
DOT & PF Project No. 68606
HAINES HIGHWAY
MILEPOST 3.5 - 25.3
Haines, Alaska

DATE: January 15, 2016 Figure Set D (17 OF 34)



- | | | | |
|---------------------|-------------------------------------|----------------------|----------------------------|
| Wetland Type | --- Proposed Centerline | --- Existing Streams | In River Mitigation |
| PEM1H | Proposed Cut & Fill Limits | | ● Ballasted Log Clusters |
| PFO1C | Previous EA Cut & Fill Limits | | |
| PSS1H | | | |
| R3OW | | | |
| | ● Mile Post Points | | |
| | Ⓜ Chilkat River Impacted Polygon ID | | |
| | Ⓜ Fish Passage Culvert # | | |

**Darker wetland colors show impacted wetlands. Lighter wetland colors show the extent of wetlands mapped within the 2006 study area. Reference EA acronym list for NWI types.*

WETLAND IMPACTS AND PROPOSED STREAM MITIGATION

TS 28/29/30 S, R 56/57/58/59 E,
Copper River Meridian, Alaska

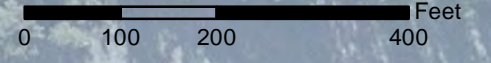
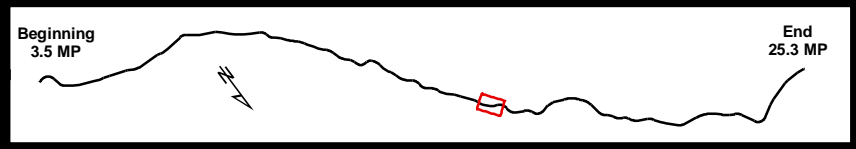


STATE OF ALASKA
DEPARTMENT OF TRANSPORTATION
AND PUBLIC FACILITIES
DOT & PF Project No. 68606
HAINES HIGHWAY
MILEPOST 3.5 - 25.3

Haines, Alaska

DATE: January 15, 2016

Figure Set D (19 OF 34)



- | | | | |
|---------------------|-----------------------------------|----------------------|----------------------------|
| Wetland Type | --- Proposed Centerline | --- Existing Streams | In River Mitigation |
| PFO1C | Proposed Cut & Fill Limits | | Ballasted Log Clusters |
| PSS1E | Previous EA Cut & Fill Limits | | |
| R3OW | | | |
| | Mile Post Points | | |
| | Chilkat River Impacted Polygon ID | | |
| | Fish Passage Culvert # | | |

*Darker wetland colors show impacted wetlands. Lighter wetland colors show the extent of wetlands mapped within the 2006 study area. Reference EA acronym list for NWI types.

WETLAND IMPACTS AND PROPOSED STREAM MITIGATION

TS 28/29/30 S, R 56/57/58/59 E,
Copper River Meridian, Alaska

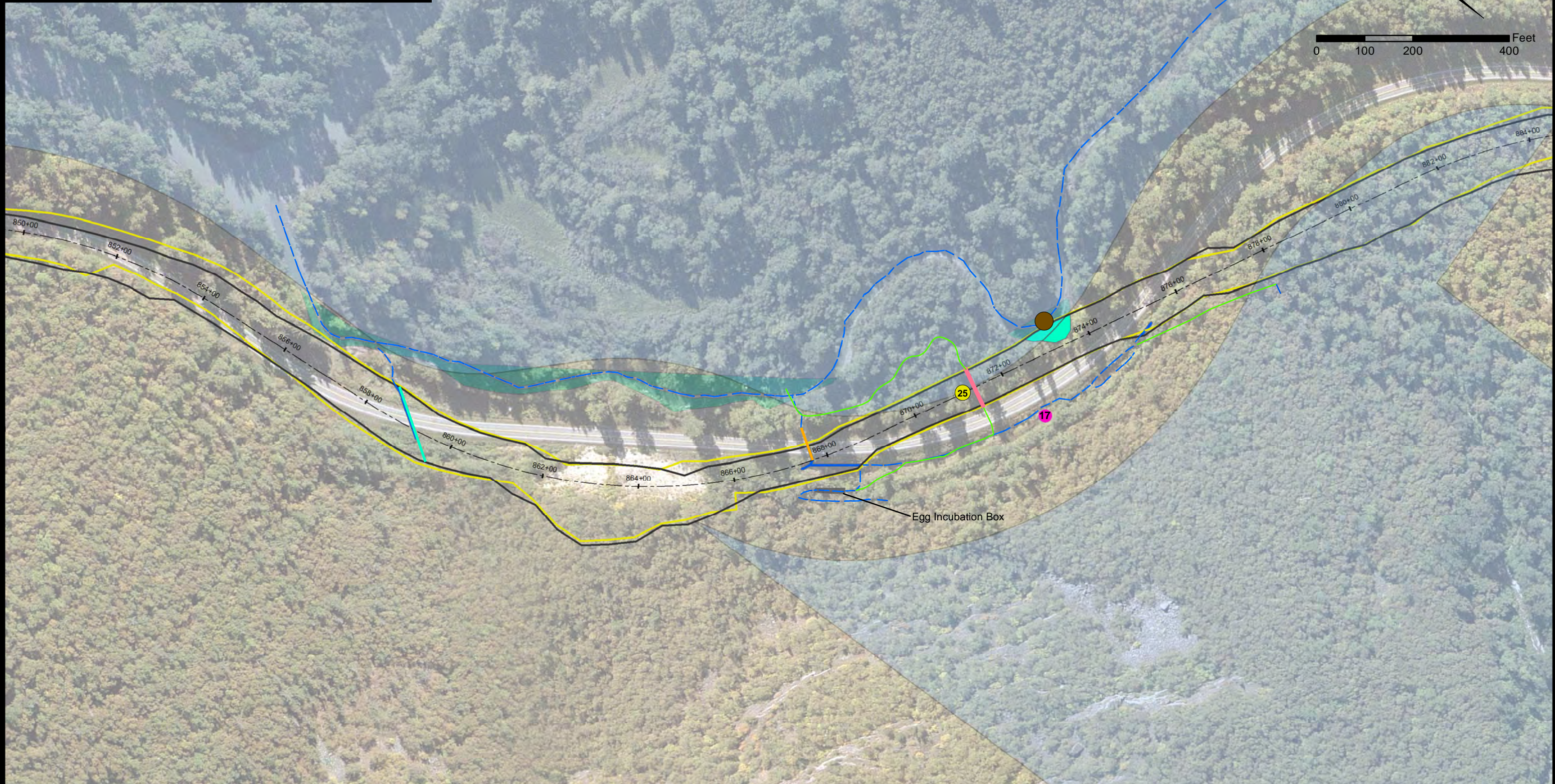
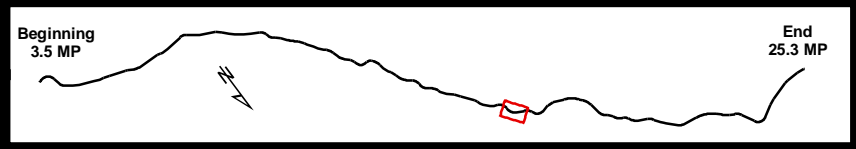


STATE OF ALASKA
DEPARTMENT OF TRANSPORTATION
AND PUBLIC FACILITIES
DOT & PF Project No. 68606
HAINES HIGHWAY
MILEPOST 3.5 - 25.3

Haines, Alaska

DATE: January 15, 2016

Figure Set D (20 OF 34)



Wetland Type		Proposed Centerline		Existing Streams		In River Mitigation	
	PEM1H		Proposed Centerline		Existing Streams		Ballasted Log Clusters
			Proposed Cut & Fill Limits		Abandoned Culvert		Fish Passage Culvert #
			Previous EA Cut & Fill Limits		New Fish Passage Culvert		Mile Post Points
					Proposed Stream Mitigation		Chilkat River Impacted Polygon ID
					Upgraded Culvert (non-anadromous streams)		Fish Passage Culvert #
					Egg Incubation Box		

*Darker wetland colors show impacted wetlands. Lighter wetland colors show the extent of wetlands mapped within the 2006 study area. Reference EA acronym list for NWI types.

WETLAND IMPACTS AND PROPOSED STREAM MITIGATION

TS 28/29/30 S, R 56/57/58/59 E,
Copper River Meridian, Alaska

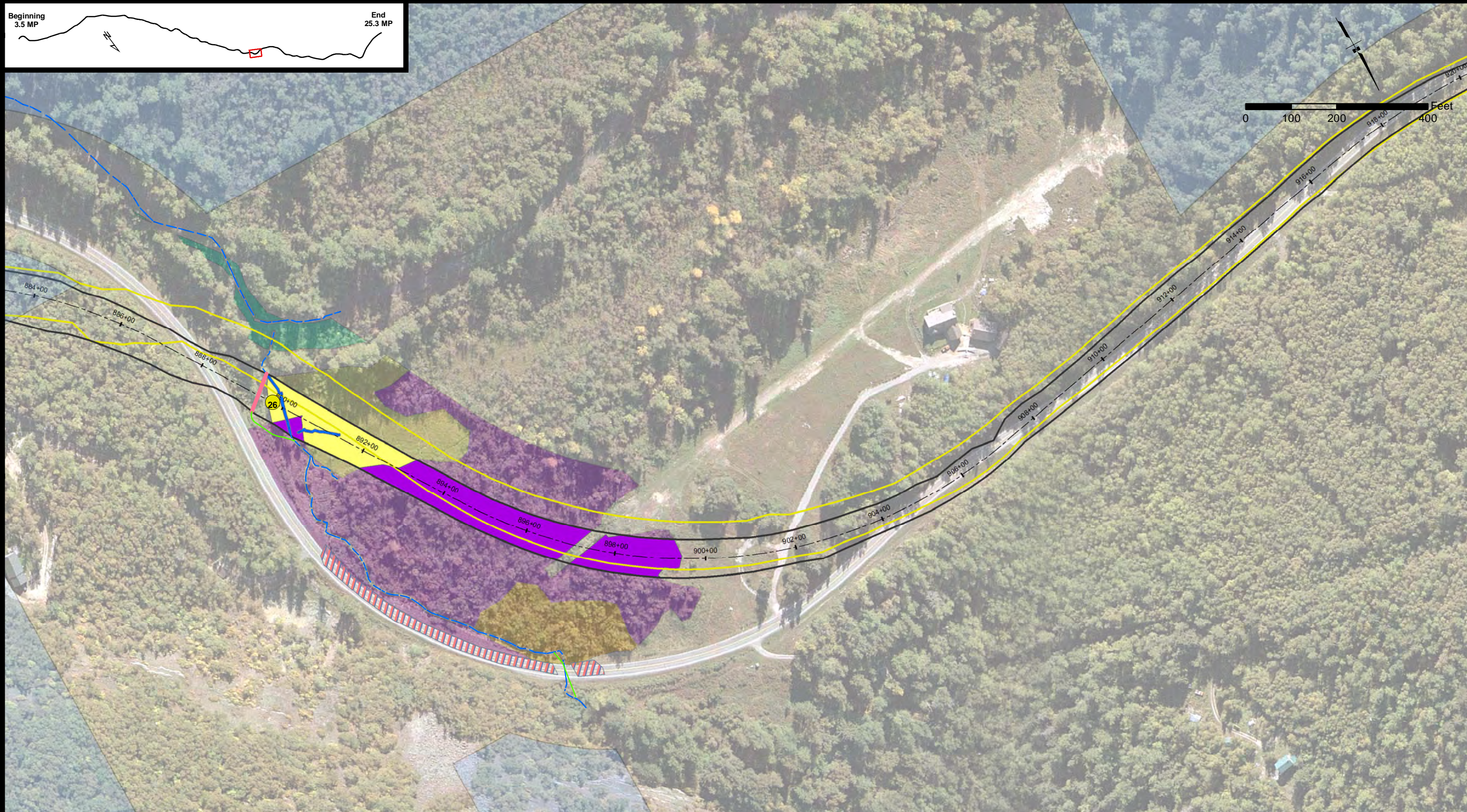
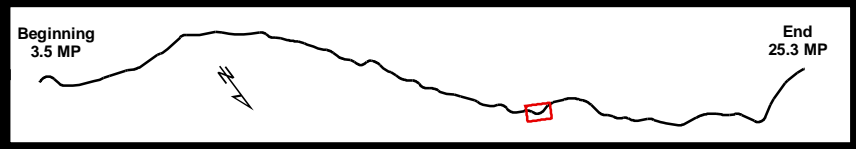


STATE OF ALASKA
DEPARTMENT OF TRANSPORTATION
AND PUBLIC FACILITIES
DOT & PF Project No. 68606
HAINES HIGHWAY
MILEPOST 3.5 - 25.3

Haines, Alaska

DATE: January 15, 2016

Figure Set D (21 OF 34)



- | | | |
|---------------------|-------------------------------------|--------------------------------|
| Wetland Type | --- Proposed Centerline | --- Existing Streams |
| PEM1B | ▭ Proposed Cut & Fill Limits | --- New Fish Passage Culvert |
| PEM1H | ▭ Previous EA Cut & Fill Limits | --- Proposed Stream Mitigation |
| PSS1E | ● Mile Post Points | ▨ Cut (Wetland Creation) |
| PSS1H | Ⓜ Chilkat River Impacted Polygon ID | |
| | Ⓜ Fish Passage Culvert # | |

*Darker wetland colors show impacted wetlands. Lighter wetland colors show the extent of wetlands mapped within the 2006 study area. Reference EA acronym list for NWI types.

WETLAND IMPACTS AND PROPOSED STREAM MITIGATION

TS 28/29/30 S, R 56/57/58/59 E,
Copper River Meridian, Alaska

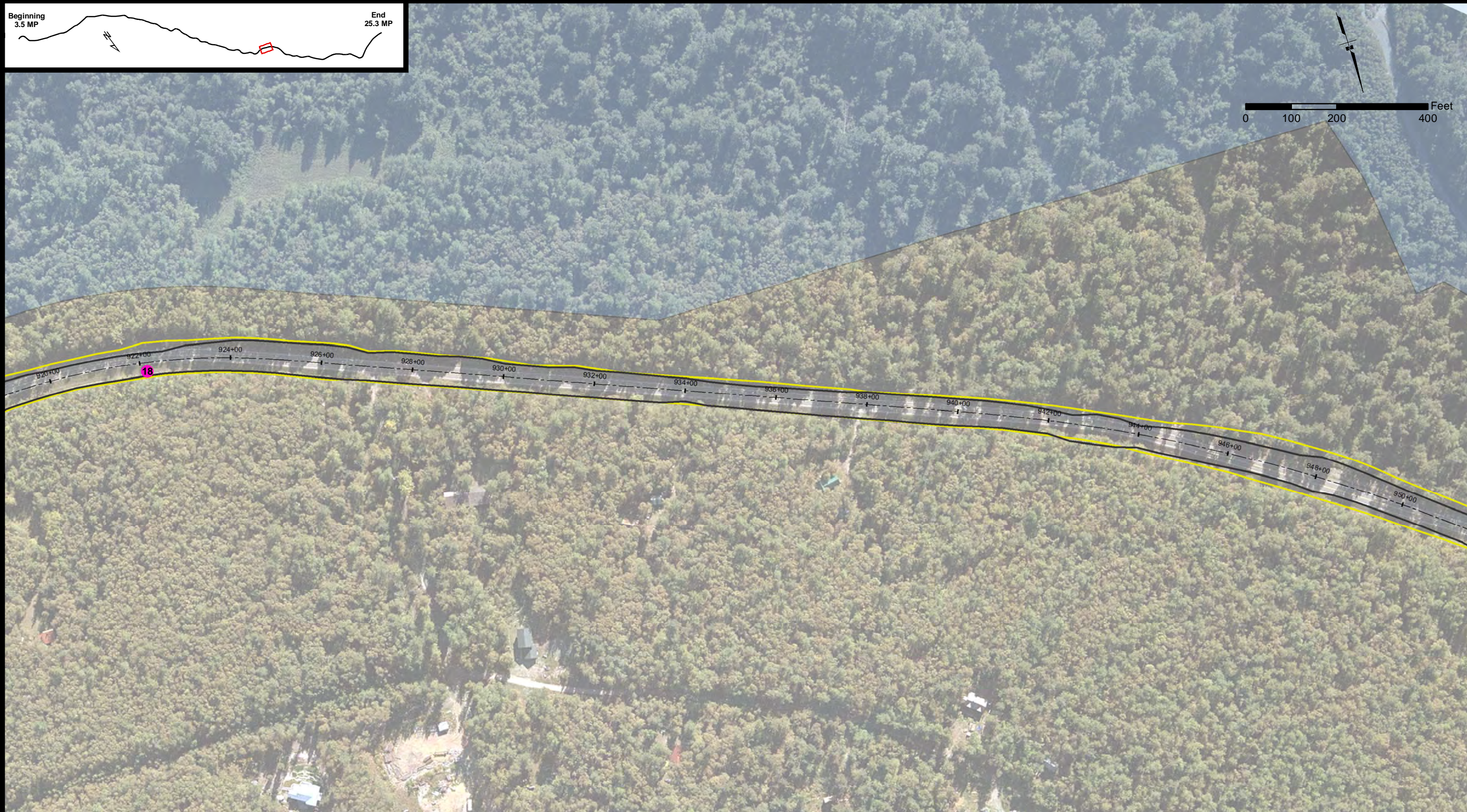
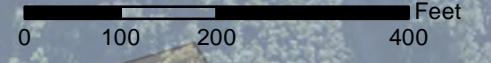
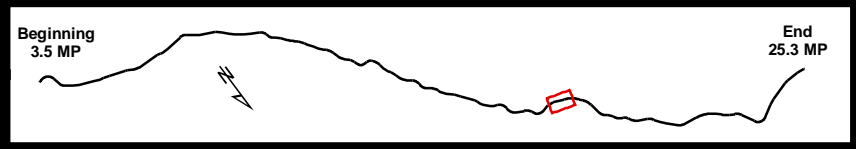


STATE OF ALASKA
DEPARTMENT OF TRANSPORTATION
AND PUBLIC FACILITIES
DOT & PF Project No. 68606
HAINES HIGHWAY
MILEPOST 3.5 - 25.3

Haines, Alaska

DATE: January 15, 2016

Figure Set D (22 OF 34)



- Proposed Centerline
- Existing Streams
- ▭ Proposed Cut & Fill Limits
- ▭ Previous EA Cut & Fill Limits
- Mile Post Points
- # Chilkat River Impacted Polygon ID
- # Fish Passage Culvert #

*Darker wetland colors show impacted wetlands. Lighter wetland colors show the extent of wetlands mapped within the 2006 study area. Reference EA acronym list for NWI types.

WETLAND IMPACTS AND PROPOSED STREAM MITIGATION

TS 28/29/30 S, R 56/57/58/59 E,
Copper River Meridian, Alaska

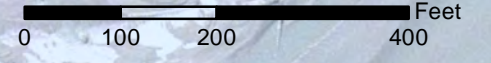
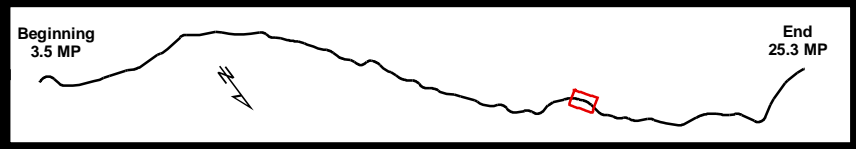


STATE OF ALASKA
DEPARTMENT OF TRANSPORTATION
AND PUBLIC FACILITIES
DOT & PF Project No. 68606
HAINES HIGHWAY
MILEPOST 3.5 - 25.3

Haines, Alaska

DATE: January 15, 2016

Figure Set D (23 OF 34)



- Proposed Centerline
- Existing Streams
- ▭ Proposed Cut & Fill Limits
- ▭ Upgraded Culvert (non-anadromous streams)
- ▭ Previous EA Cut & Fill Limits
- Mile Post Points
- Ⓝ Chilkat River Impacted Polygon ID
- Ⓝ Fish Passage Culvert #

**Darker wetland colors show impacted wetlands. Lighter wetland colors show the extent of wetlands mapped within the 2006 study area. Reference EA acronym list for NWI types.*

WETLAND IMPACTS AND PROPOSED STREAM MITIGATION

TS 28/29/30 S, R 56/57/58/59 E,
Copper River Meridian, Alaska

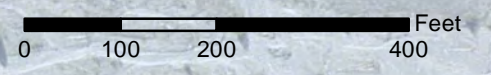
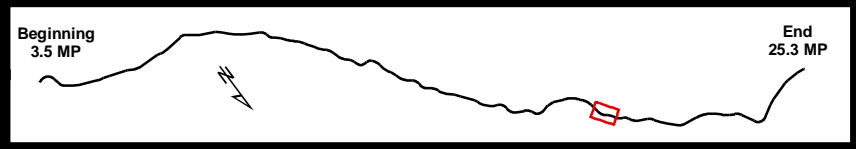


STATE OF ALASKA
DEPARTMENT OF TRANSPORTATION
AND PUBLIC FACILITIES
DOT & PF Project No. 68606
HAINES HIGHWAY
MILEPOST 3.5 - 25.3

Haines, Alaska

DATE: January 15, 2016

Figure Set D (24 OF 34)



- | | | | |
|-------------------------------------|---------------------------------|---|----------------------------|
| Wetland Type | --- Proposed Centerline | --- Existing Streams | In River Mitigation |
| PEM1H | ▭ Proposed Cut & Fill Limits | --- Upgraded Culvert (non-anadromous streams) | ● Ballasted Log Clusters |
| R3OW | ▭ Previous EA Cut & Fill Limits | | |
| ● Mile Post Points | | | |
| # Chilkat River Impacted Polygon ID | | | |
| # Fish Passage Culvert # | | | |

*Darker wetland colors show impacted wetlands. Lighter wetland colors show the extent of wetlands mapped within the 2006 study area. Reference EA acronym list for NWI types.

WETLAND IMPACTS AND PROPOSED STREAM MITIGATION

TS 28/29/30 S, R 56/57/58/59 E,
Copper River Meridian, Alaska

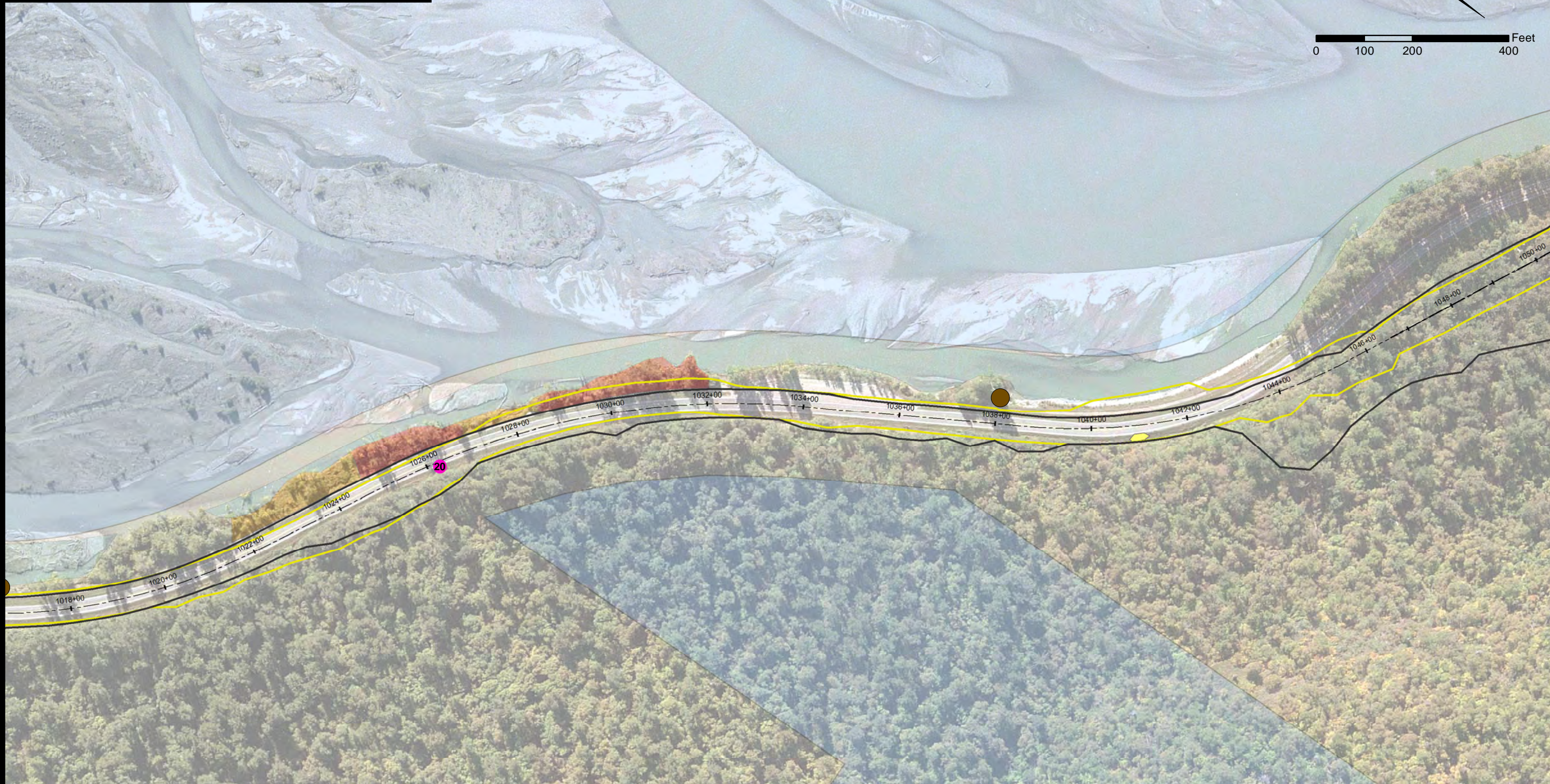
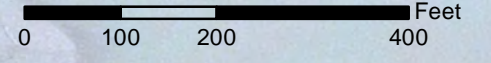
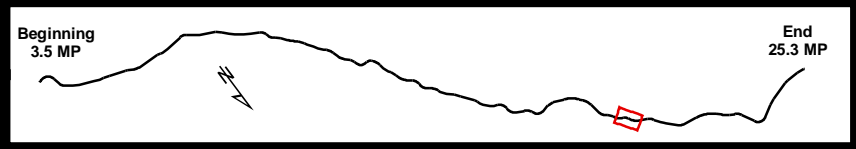


STATE OF ALASKA
DEPARTMENT OF TRANSPORTATION
AND PUBLIC FACILITIES
DOT & PF Project No. 68606
HAINES HIGHWAY
MILEPOST 3.5 - 25.3

Haines, Alaska

DATE: January 15, 2016

Figure Set D (25 OF 34)



- | | | | |
|---------------------|-------------------------------|----------------------|-------------------------------------|
| Wetland Type | --- Proposed Centerline | --- Existing Streams | In River Mitigation |
| PEM1B | Proposed Cut & Fill Limits | | ● Ballasted Log Clusters |
| PFO1C | Previous EA Cut & Fill Limits | | ● Mile Post Points |
| PSS1H | | | ⊕ Chilkat River Impacted Polygon ID |
| R3OW | | | ⊕ Fish Passage Culvert # |

*Darker wetland colors show impacted wetlands. Lighter wetland colors show the extent of wetlands mapped within the 2006 study area. Reference EA acronym list for NWI types.

WETLAND IMPACTS AND PROPOSED STREAM MITIGATION

TS 28/29/30 S, R 56/57/58/59 E,
Copper River Meridian, Alaska

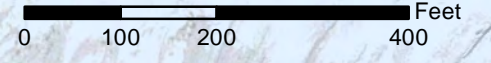
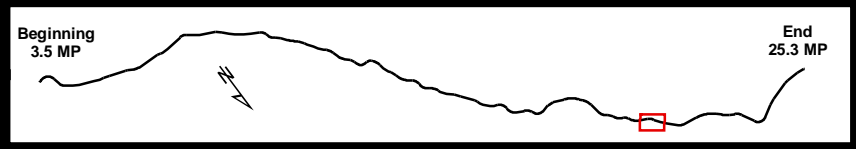


STATE OF ALASKA
DEPARTMENT OF TRANSPORTATION
AND PUBLIC FACILITIES
DOT & PF Project No. 68606
HAINES HIGHWAY
MILEPOST 3.5 - 25.3

Haines, Alaska

DATE: January 15, 2016

Figure Set D (26 OF 34)



- | | | |
|---------------------|-----------------------------------|----------------------|
| Wetland Type | --- Proposed Centerline | --- Existing Streams |
| R3OW | Proposed Cut & Fill Limits | |
| | Previous EA Cut & Fill Limits | |
| | Mile Post Points | |
| | Chilkat River Impacted Polygon ID | |
| | Fish Passage Culvert # | |

*Darker wetland colors show impacted wetlands. Lighter wetland colors show the extent of wetlands mapped within the 2006 study area. Reference EA acronym list for NWI types.

WETLAND IMPACTS AND PROPOSED STREAM MITIGATION

TS 28/29/30 S, R 56/57/58/59 E,
Copper River Meridian, Alaska

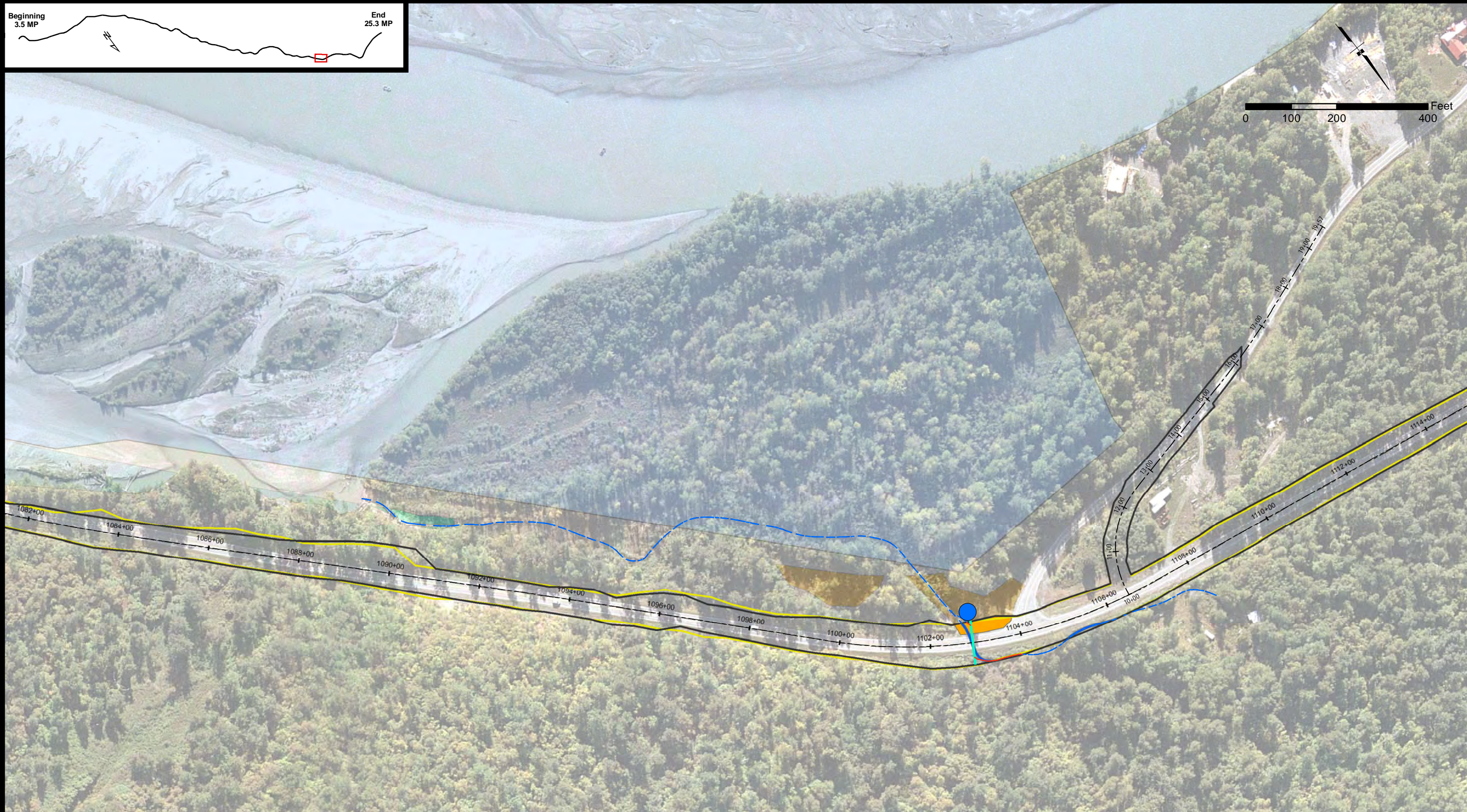
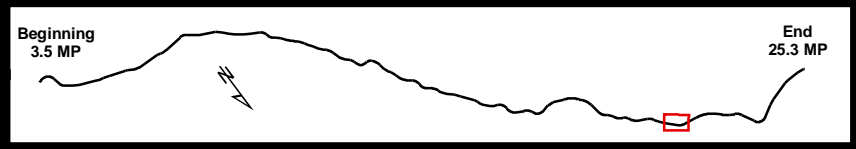


STATE OF ALASKA
DEPARTMENT OF TRANSPORTATION
AND PUBLIC FACILITIES
DOT & PF Project No. 68606
HAINES HIGHWAY
MILEPOST 3.5 - 25.3

Haines, Alaska

DATE: January 15, 2016

Figure Set D (27 OF 34)



- | | | | |
|---------------------|-------------------------------------|---|----------------------------|
| Wetland Type | --- Proposed Centerline | --- Existing Streams | In River Mitigation |
| PEM1H | ▭ Proposed Cut & Fill Limits | --- Stream Impacts | ● Improve Fish Habitat |
| PSS1H | ▭ Previous EA Cut & Fill Limits | --- Upgraded Culvert (non-anadromous streams) | |
| R3OW | ● Mile Post Points | | |
| | # Chilkat River Impacted Polygon ID | | |
| | # Fish Passage Culvert # | | |

*Darker wetland colors show impacted wetlands. Lighter wetland colors show the extent of wetlands mapped within the 2006 study area. Reference EA acronym list for NWI types.

WETLAND IMPACTS AND PROPOSED STREAM MITIGATION

TS 28/29/30 S, R 56/57/58/59 E,
Copper River Meridian, Alaska

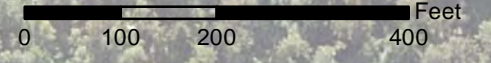
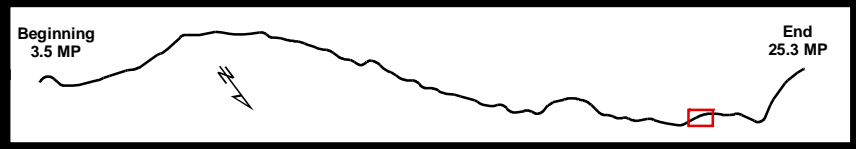


STATE OF ALASKA
DEPARTMENT OF TRANSPORTATION
AND PUBLIC FACILITIES
DOT & PF Project No. 68606
HAINES HIGHWAY
MILEPOST 3.5 - 25.3

Haines, Alaska

DATE: January 15, 2016

Figure Set D (28 OF 34)



- Proposed Centerline
- Existing Streams
- ▭ Proposed Cut & Fill Limits
- ▭ Previous EA Cut & Fill Limits
- Mile Post Points
- # Chilkat River Impacted Polygon ID
- # Fish Passage Culvert #

*Darker wetland colors show impacted wetlands. Lighter wetland colors show the extent of wetlands mapped within the 2006 study area. Reference EA acronym list for NWI types.

WETLAND IMPACTS AND PROPOSED STREAM MITIGATION

TS 28/29/30 S, R 56/57/58/59 E,
Copper River Meridian, Alaska

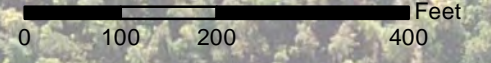
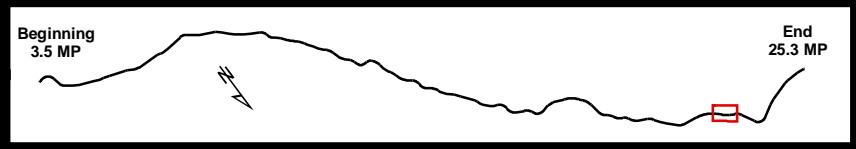


STATE OF ALASKA
DEPARTMENT OF TRANSPORTATION
AND PUBLIC FACILITIES
DOT & PF Project No. 68606
HAINES HIGHWAY
MILEPOST 3.5 - 25.3

Haines, Alaska

DATE: January 15, 2016

Figure Set D (29 OF 34)



Wetland Type	--- Proposed Centerline	--- Existing Streams
R3OW	Proposed Cut & Fill Limits	Upgraded Culvert (non-anadromous streams)
	Previous EA Cut & Fill Limits	
	Mile Post Points	
	Chilkat River Impacted Polygon ID	
	Fish Passage Culvert #	

*Darker wetland colors show impacted wetlands. Lighter wetland colors show the extent of wetlands mapped within the 2006 study area. Reference EA acronym list for NWI types.

WETLAND IMPACTS AND PROPOSED STREAM MITIGATION

TS 28/29/30 S, R 56/57/58/59 E,
Copper River Meridian, Alaska

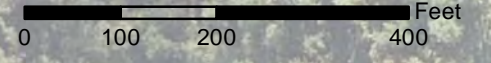
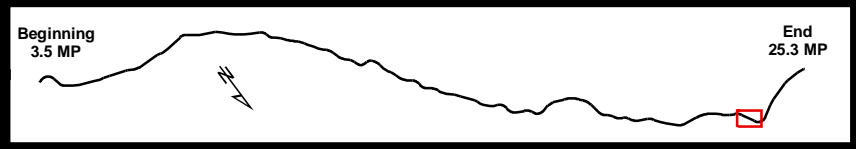


STATE OF ALASKA
DEPARTMENT OF TRANSPORTATION
AND PUBLIC FACILITIES
DOT & PF Project No. 68606
HAINES HIGHWAY
MILEPOST 3.5 - 25.3

Haines, Alaska

DATE: January 15, 2016

Figure Set D (30 OF 34)



Wetland Type	--- Proposed Centerline	--- Existing Streams
■ R30W	▭ Proposed Cut & Fill Limits	▭ Upgraded Culvert (non-anadromous streams)
	▭ Previous EA Cut & Fill Limits	
● Mile Post Points		
⊕ Chilkat River Impacted Polygon ID		
⊙ Fish Passage Culvert #		

*Darker wetland colors show impacted wetlands. Lighter wetland colors show the extent of wetlands mapped within the 2006 study area. Reference EA acronym list for NWI types.

WETLAND IMPACTS AND PROPOSED STREAM MITIGATION

TS 28/29/30 S, R 56/57/58/59 E,
Copper River Meridian, Alaska

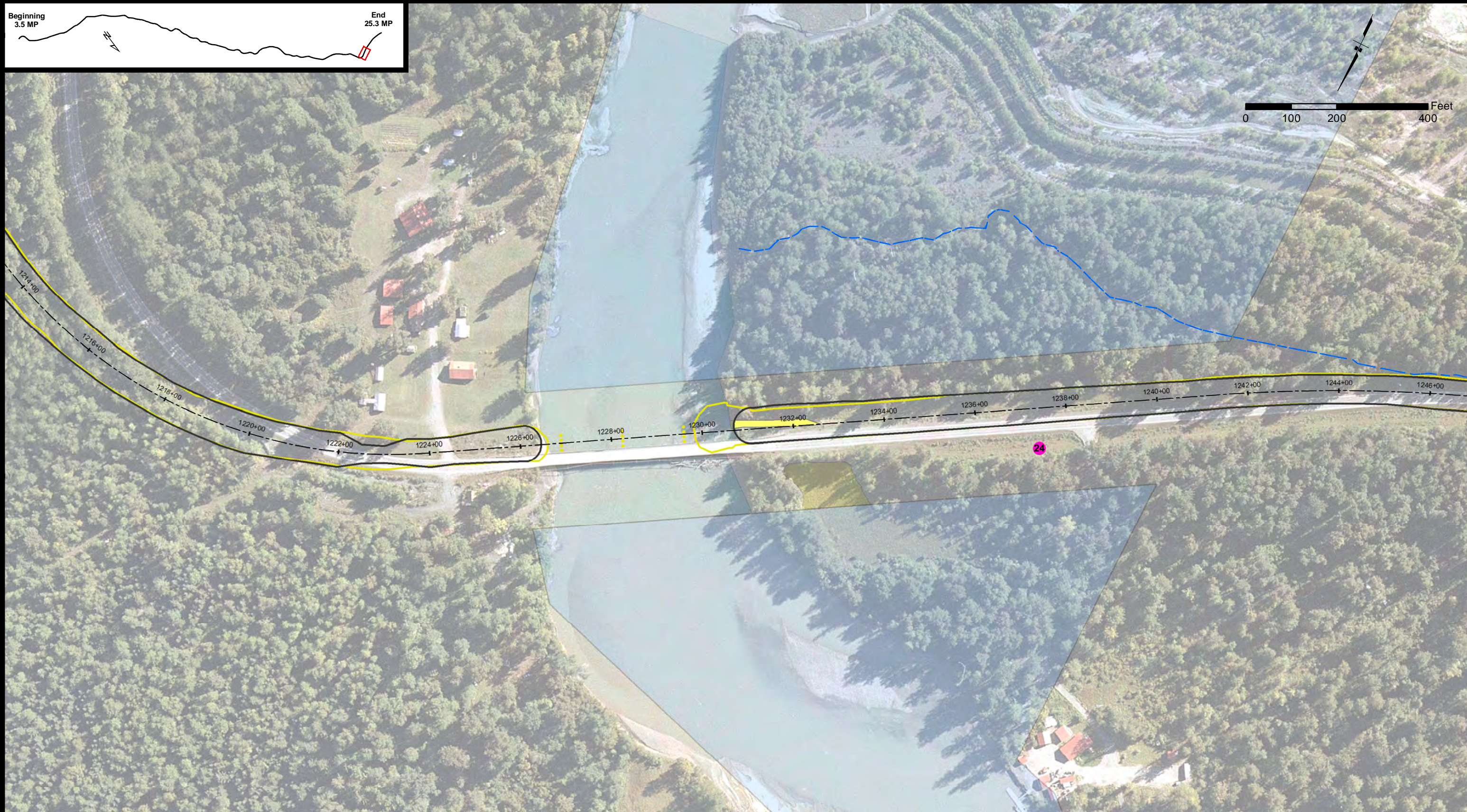
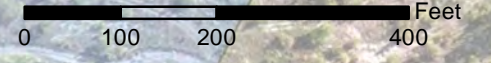
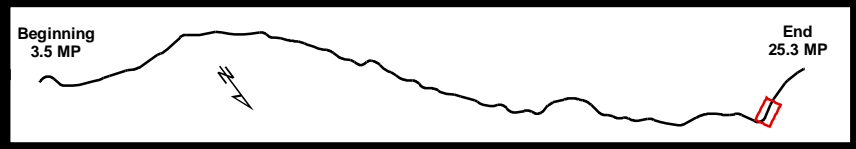


STATE OF ALASKA
DEPARTMENT OF TRANSPORTATION
AND PUBLIC FACILITIES
DOT & PF Project No. 68606
HAINES HIGHWAY
MILEPOST 3.5 - 25.3

Haines, Alaska

DATE: January 15, 2016

Figure Set D (31 OF 34)



- | | | |
|---------------------|-------------------------------------|----------------------|
| Wetland Type | --- Proposed Centerline | --- Existing Streams |
| PEM1B | Proposed Cut & Fill Limits | |
| R3OW | Previous EA Cut & Fill Limits | |
| | ● Mile Post Points | |
| | ⊕ Chilkat River Impacted Polygon ID | |
| | ⊕ Fish Passage Culvert # | |

*Darker wetland colors show impacted wetlands. Lighter wetland colors show the extent of wetlands mapped within the 2006 study area. Reference EA acronym list for NWI types.

WETLAND IMPACTS AND PROPOSED STREAM MITIGATION

TS 28/29/30 S, R 56/57/58/59 E,
Copper River Meridian, Alaska

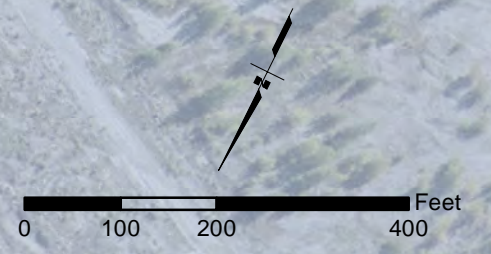
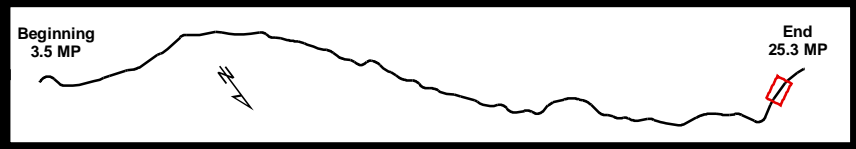


STATE OF ALASKA
DEPARTMENT OF TRANSPORTATION
AND PUBLIC FACILITIES
DOT & PF Project No. 68606
HAINES HIGHWAY
MILEPOST 3.5 - 25.3

Haines, Alaska

DATE: January 15, 2016

Figure Set D (32 OF 34)



- Wetland Type**
- PSS1E
- Proposed Centerline
- Existing Streams
- Proposed Cut & Fill Limits
- Previous EA Cut & Fill Limits
- Mile Post Points
- # Chilkat River Impacted Polygon ID
- # Fish Passage Culvert #

*Darker wetland colors show impacted wetlands. Lighter wetland colors show the extent of wetlands mapped within the 2006 study area. Reference EA acronym list for NWI types.

WETLAND IMPACTS AND PROPOSED STREAM MITIGATION

TS 28/29/30 S, R 56/57/58/59 E,
Copper River Meridian, Alaska

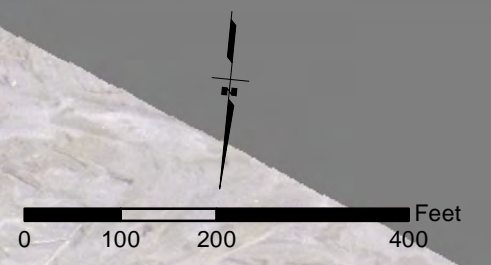
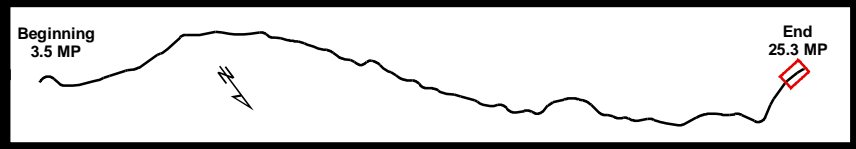


STATE OF ALASKA
DEPARTMENT OF TRANSPORTATION
AND PUBLIC FACILITIES
DOT & PF Project No. 68606
HAINES HIGHWAY
MILEPOST 3.5 - 25.3

Haines, Alaska

DATE: January 15, 2016

Figure Set D (33 OF 34)



- | | | |
|---------------------|-----------------------------------|----------------------|
| Wetland Type | --- Proposed Centerline | --- Existing Streams |
| PSS1E | Proposed Cut & Fill Limits | |
| R3OW | Previous EA Cut & Fill Limits | |
| | Mile Post Points | |
| | Chilkat River Impacted Polygon ID | |
| | Fish Passage Culvert # | |

**Darker wetland colors show impacted wetlands. Lighter wetland colors show the extent of wetlands mapped within the 2006 study area. Reference EA acronym list for NWI types.*

WETLAND IMPACTS AND PROPOSED STREAM MITIGATION

TS 28/29/30 S, R 56/57/58/59 E,
Copper River Meridian, Alaska



STATE OF ALASKA
DEPARTMENT OF TRANSPORTATION
AND PUBLIC FACILITIES
DOT & PF Project No. 68606
HAINES HIGHWAY
MILEPOST 3.5 - 25.3

Haines, Alaska

DATE: January 15, 2016

Figure Set D (34 OF 34)

Table D-1: Proposed Culvert Improvements for Fish Passage

EFH Figure Set 1 Sheet	Station	ADFG Catalog	Fish Species	Existing Conditions	Proposed Culvert Replacement (Tier 1 or Tier 2)	Improved Stream Length
2	222+87	115-32-10250-2004	Coho, Dolly Varden	48" CMP	Tier 1; 95"x67" Aluminum Pipe Arch	102
2	229+23	115-32-10250-2006	Coho, Dolly Varden, Cutthroat trout	24" CMP	Tier 1; 60" CMP	94
2	232+22 to 231+69	115-32-10250-2006	Coho, Dolly Varden, Cutthroat trout	24" CMP	Tier 1; 60" CMP	60
2	240+41	115-32-10250-2006-3003	Coho, Dolly Varden, Cutthroat trout	24" CMP	Tier 1; 60" CMP	76
2	244+91 to 244+60	115-32-10250-2006	Coho, Dolly Varden, Cutthroat trout	24" CMP	Tier 1; 60" CMP	40
2	245+38	115-32-10250-2008-3004	Coho, Dolly Varden, Chinook, Cutthroat trout	36" CMP	Tier 1; 60" CMP	76
2	248+43	115-32-10250-2006	Coho, Dolly Varden, Cutthroat trout	24" CMP	Tier 1; 60" CMP	70
4	292+92	115-32-10250-2014	Coho, Chinook, Dolly Varden, Cutthroat trout	Two 24" CMPs	Tier 1; 75"x55" Aluminium Pipe Arch	66
5	319+22	115-32-10250-2016	Coho, Chinook, Dolly Varden	36" CMP	Tier 1; 81"x59" Aluminium Pipe Arch	72
5	324+84	115-32-10250-2020	Coho, Dolly Varden	48" CMP	Tier 1; 95"x67" Aluminium Pipe Arch	80
6	366+48	115-32-10250-2022	Coho, Dolly Varden, Cutthroat trout	24" CMP	Tier 1; 48" CMP	70
7	382+11	115-32-10250-2024	Coho, Dolly Varden	36" CMP	Tier 1; 48" CMP	76
10	483+70	115-32-10250-2028	Coho, Dolly Varden	48" CMP	Tier 1; 95"x67" Aluminum Pipe Arch	94
10	512+34	115-32-10250-2030-3002	Coho, Pink, Chum, Dolly Varden	36" & 24" CMPs	Tier 1; 151"x89" Aluminum Pipe Arch	78
11	530+70	115-32-10250-2030	Coho, Steelhead	24" CMP	Tier 1; 60" CMP	78
13	589+29	115-32-10250-2032	Coho, Dolly Varden, Cutthroat trout	Two 24" CMP	Tier 1; 72" CMP	74
14	648+90	115-32-10250-2040	Coho, Chinook, Pink, Dolly Varden, Cutthroat trout	36" CMP	Tier 1; 8'-10" by 6'-1" arch pipe	60

EFH Figure Set 1 Sheet	Station	ADFG Catalog	Fish Species	Existing Conditions	Proposed Culvert Replacement (Tier 1 or Tier 2)	Improved Stream Length
15	654+20	115-32-10250-2040	Coho, Chinook, Pink, Dolly Varden, Cutthroat trout	36" CMP	Tier 1; 8'-10" by 6'-1" arch pipe	60
15	656+80	115-32-10250-2042	Coho	New Crossing	Tier 1 or Tier 2; design to be completed	60
16	711+75	115-32-10250-2044	Coho, Chinook, Dolly Varden	Two 36" CMP	Tier 1; 12'-7" by 8'-4" arch pipe	120
17	738+25	115-32-10250-2046	Coho, Chinook, Dolly Varden	24" CMP	Tier 1; 7'-3" by 5'-3" arch pipe	70
18	768+75	Un-cataloged Stream	Coho, Chinook, Dolly Varden	36" CMP	Tier 1; 3.5' diameter CMP	60
18	772+10	11-32-10250-2050	Coho, Chinook, Dolly Varden	24" CMP	Tier 1 or Tier 2; design to be completed	66
21	871+10	115-32-10250-2060-3012-4001	Coho, Chinook, Chum, Dolly Varden	6'-1" by 4'-7" arch pipe	Tier 1; 11'-7" by 7'-5" arch pipe	160
22	887+60	115-32-10250-3011	Coho, Pink, Dolly Varden	Two 36" CMP	Tier 1; 9'-4" by 6'-3" arch pipe	129
					Total	1,991 LF