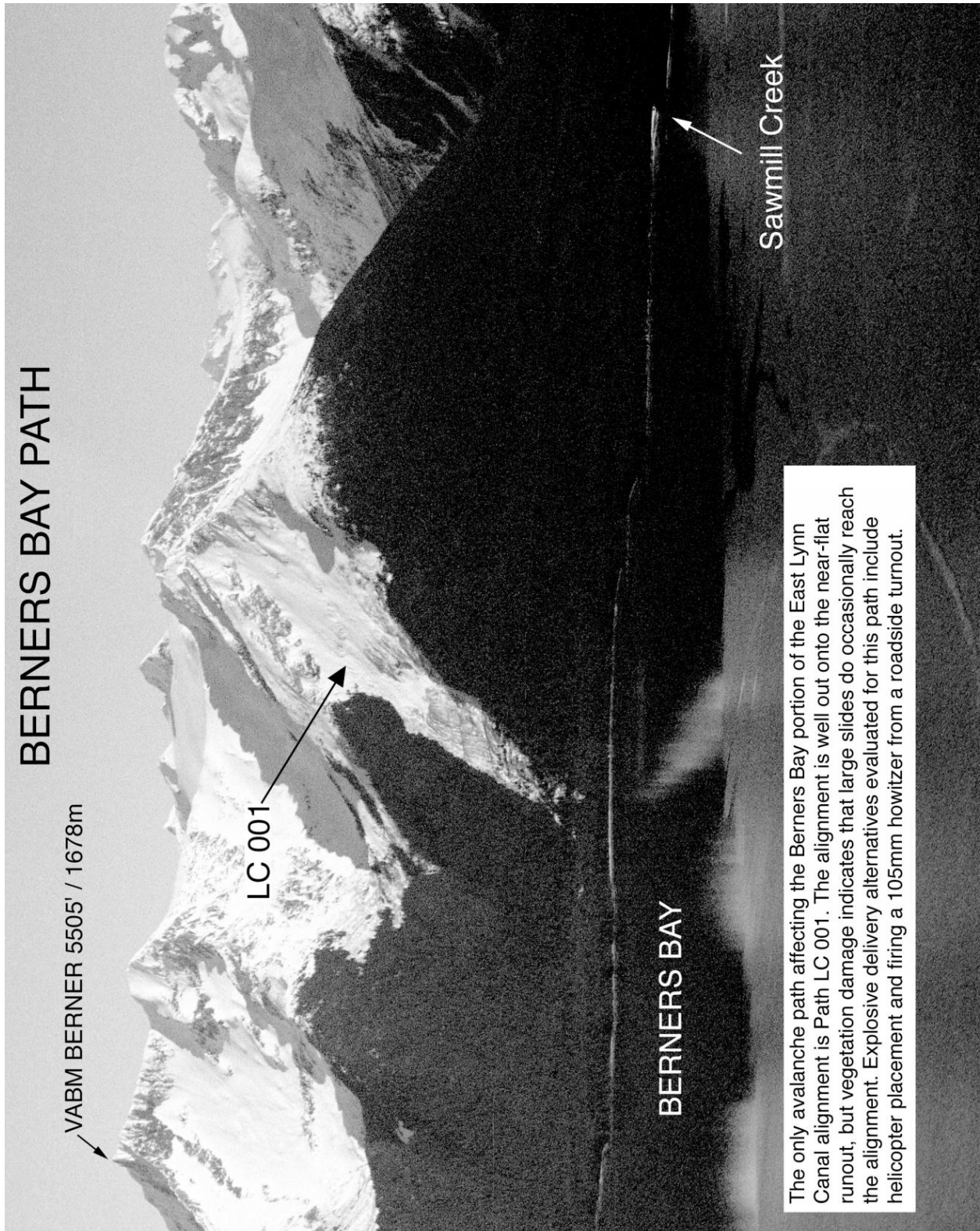


9. Atlas - East Lynn Canal Avalanche Paths

DRAFT

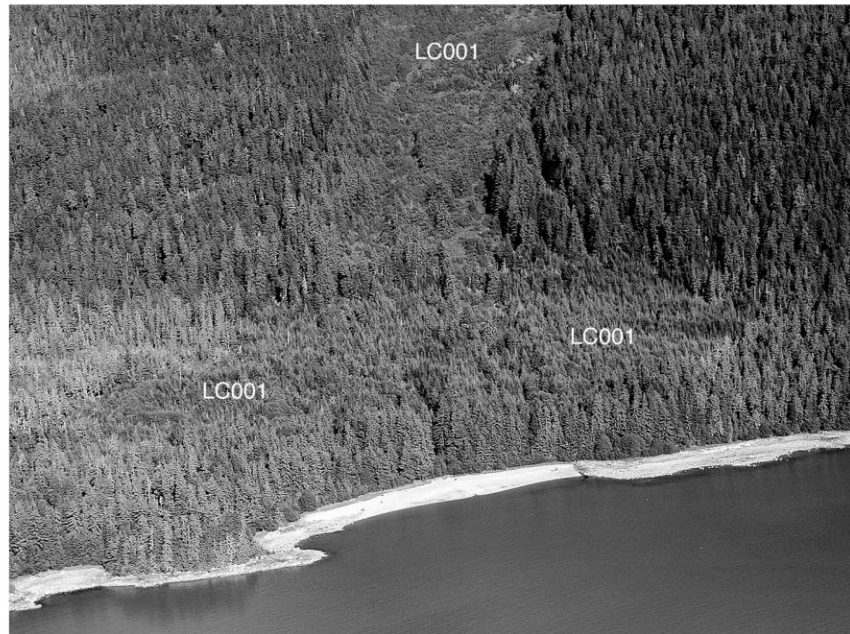
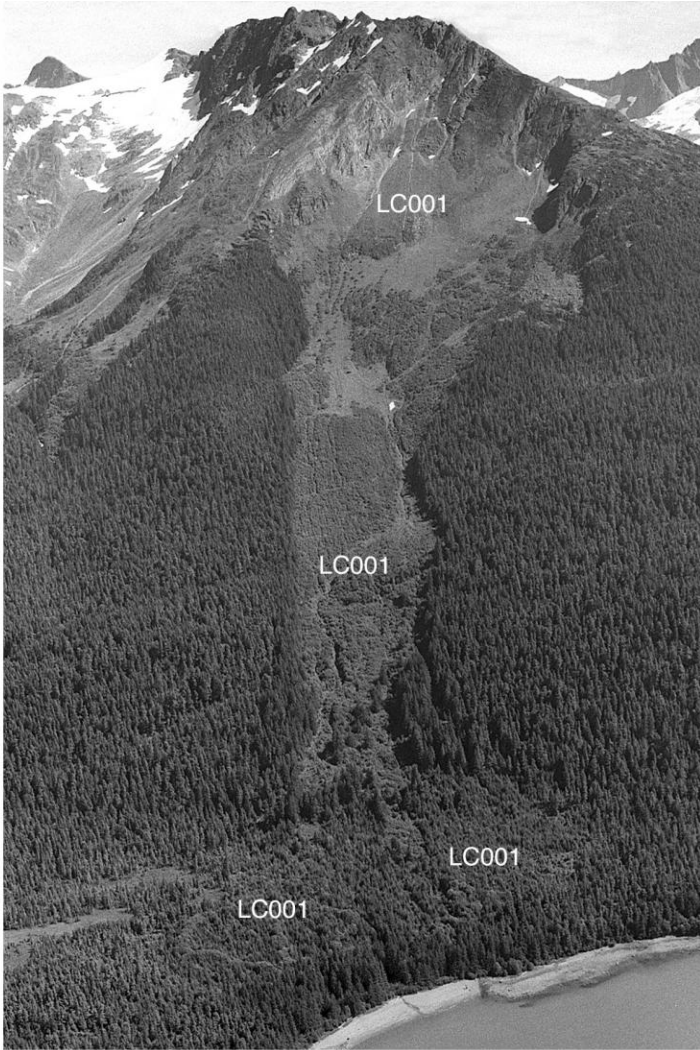
This Page Left Intentionally Blank

DRAFT



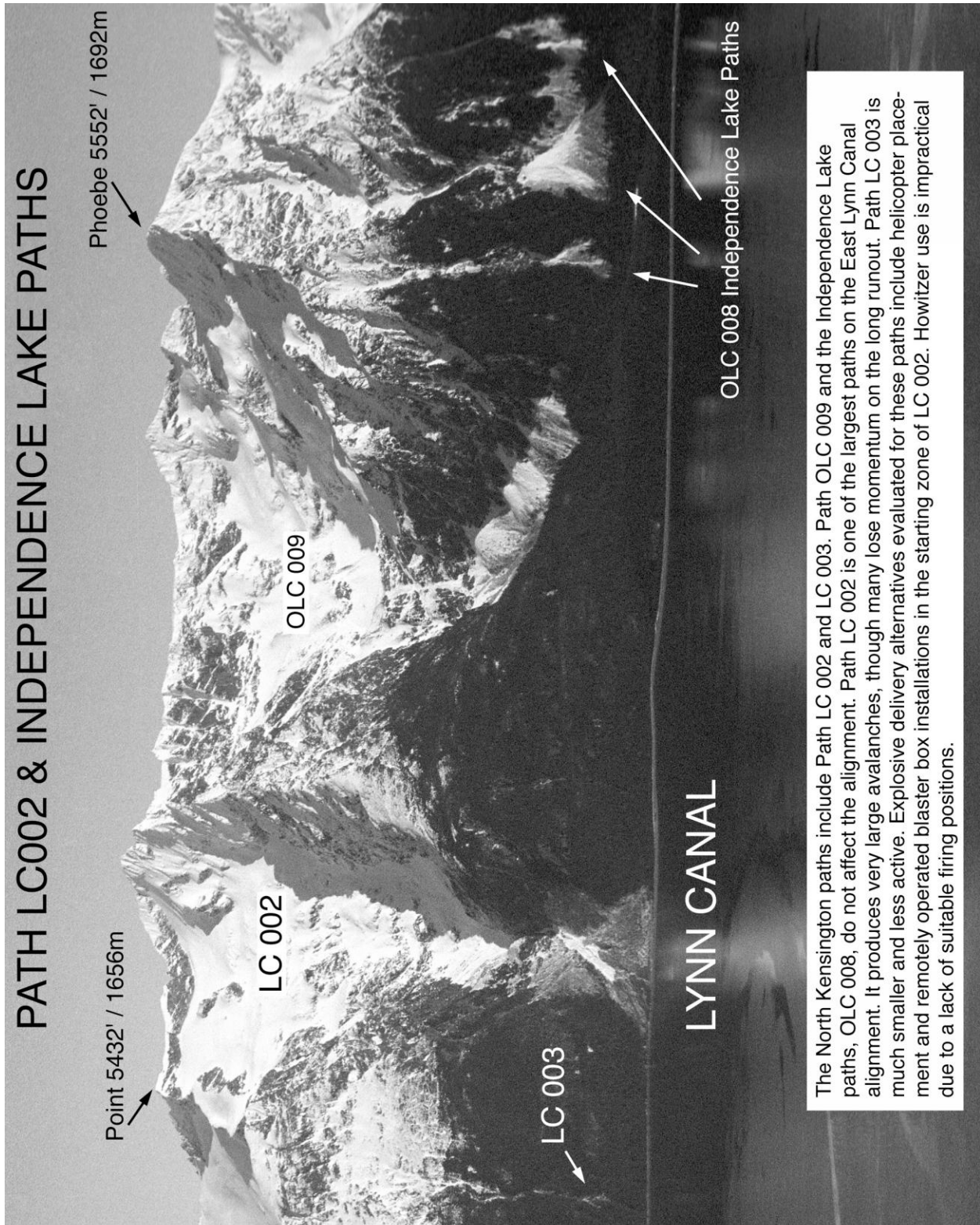
This Page Left Intentionally Blank

DRAFT



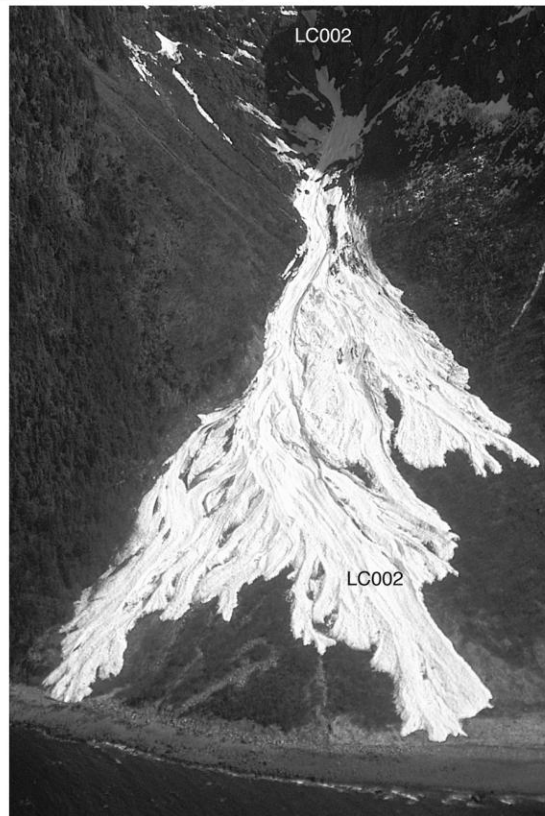
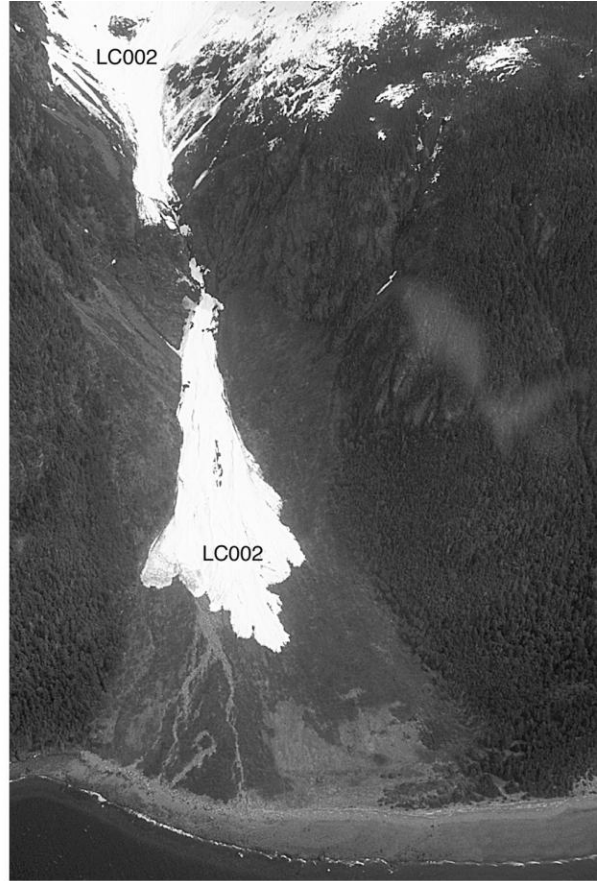
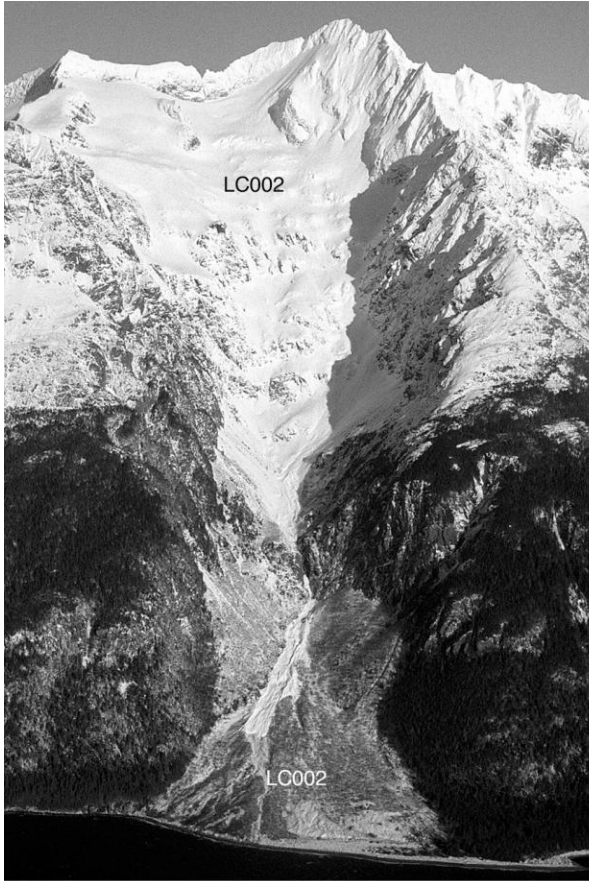
Path: LC001

Path Group:	Berners Bay
Latitude-Longitude:	58.441688-134.553822
Max Width:	1900 feet / 579 meters
Typical Width:	1000 feet / 305 meters
Starting Elevation:	4900 feet / 1493 meters
Elevation Class:	high
Path Size:	very large
Starting Zone Characteristics:	big bowl
Start Aspect:	W
Path Type:	classic confined; wide track
Runout Angle:	decreases abruptly
Unmitigated Avalanche Hazard Index (AHI):	0.58
Structural Mitigation:	None
Structurally Mitigated AHI:	0.58
AHI with Forecasting and Exploders:	0.17



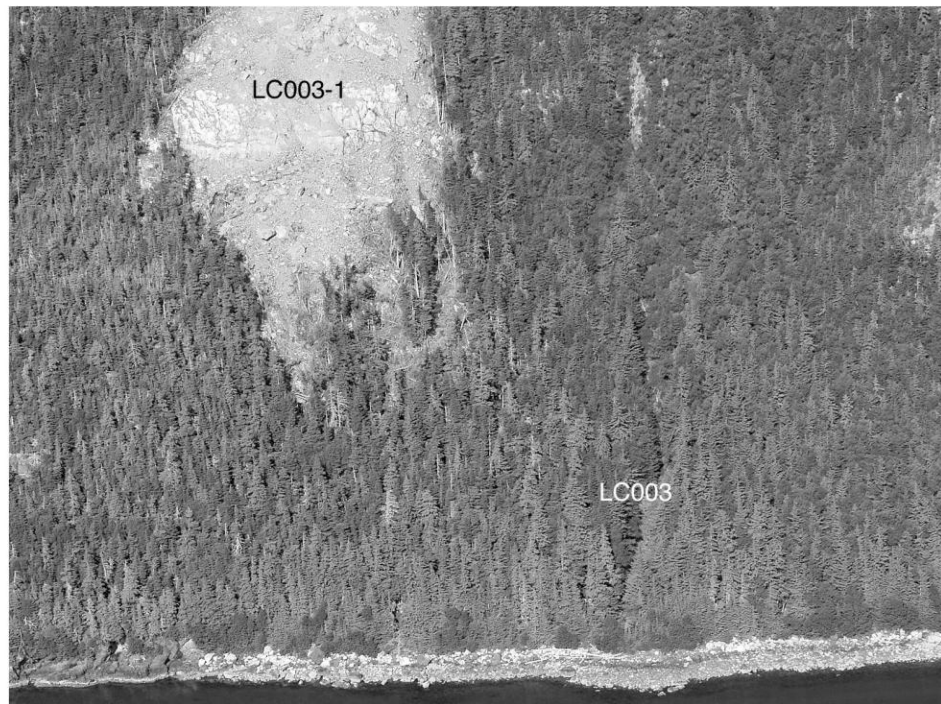
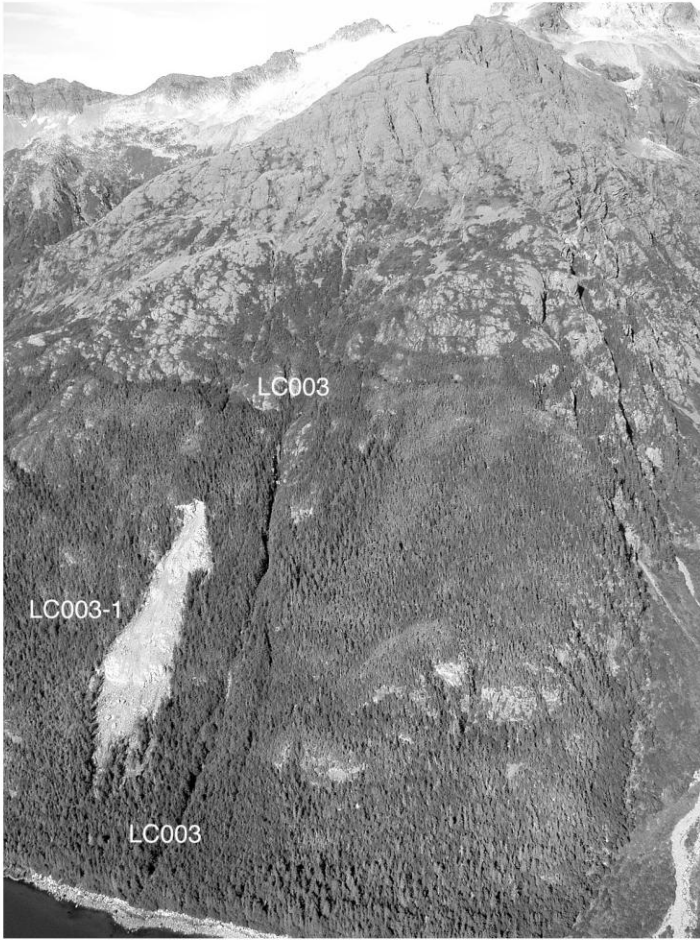
This Page Left Intentionally Blank

DRAFT



Path: LC002

Path Group:	North Kensington
Latitude-Longitude:	58.542239 -135.091832
Max Width:	2115 feet / 645 meters
Typical Width:	500 feet / 152 meters
Starting Elevation:	5900 feet / 1798 meters
Elevation Class:	high
Path Size:	very large
Starting Zone Characteristics:	big bowl
Start Aspect:	WSW
Path Type:	classic confined; very wide track
Runout Angle:	decreases gradually
Unmitigated avalanche hazard index (AHI):	17.65
Structural Mitigation:	33 foot / 10meter elevated fill, 0.5x
Structurally Mitigated AHI:	8.82
AHI with Forecasting and Exploders:	2.65



Path: LC003

Path Group: North Kensington

Latitude-Longitude: 58.54455 -135.09301

Max Width: 130 feet / 40 meters

Typical Width: 130 feet / 40 meters

Starting Elevation: 3500 feet / 1067 meters

Elevation Class: high

Path Size: small

Starting Zone Characteristics: broad face

Start Aspect: WSW

Path Type: narrow gully

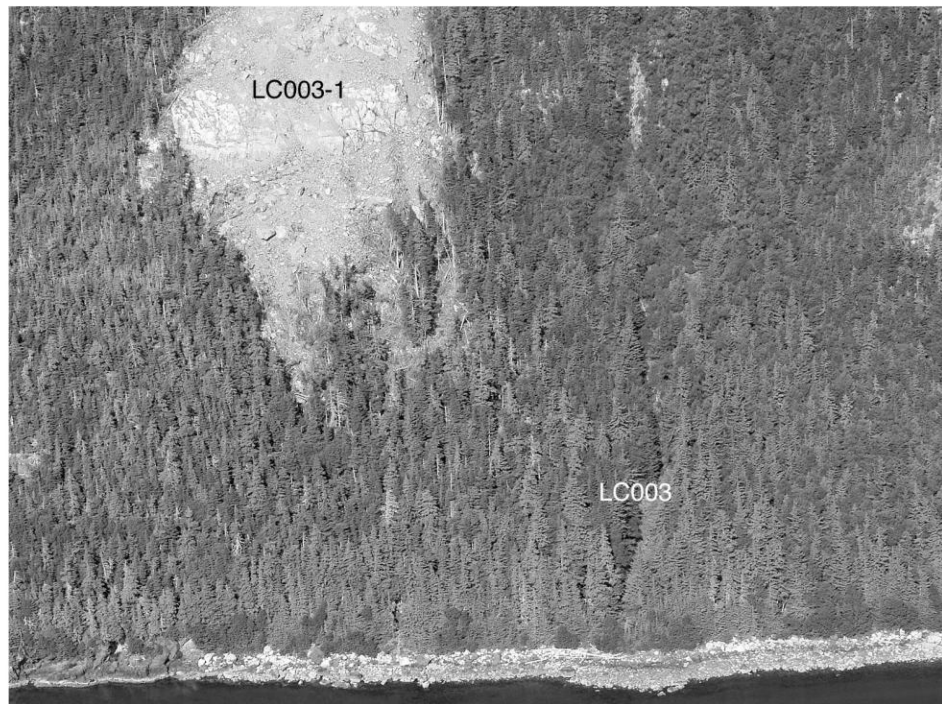
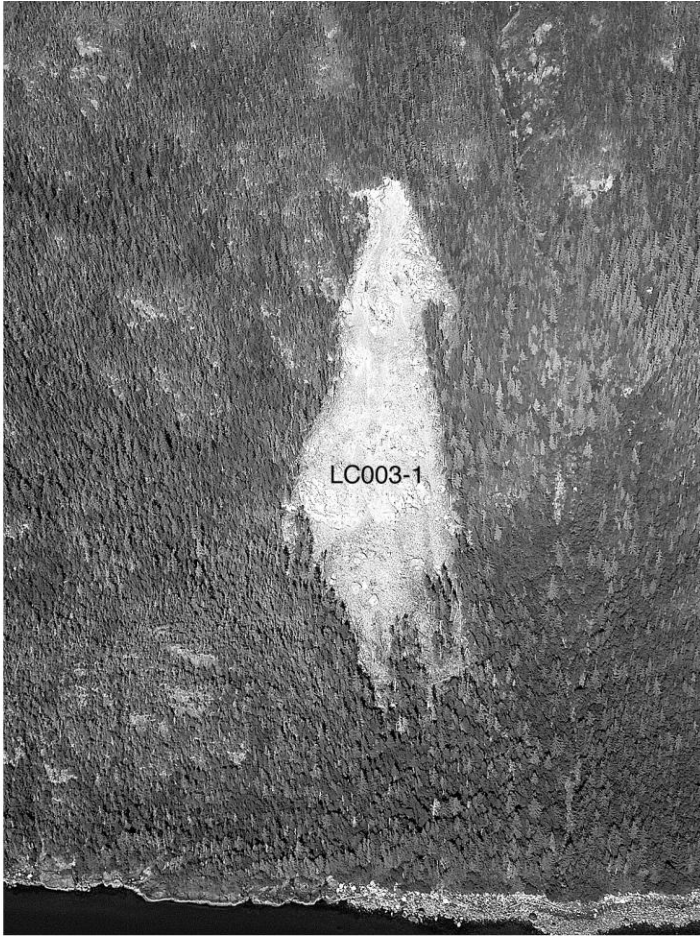
Runout Angle: steep

Unmitigated avalanche hazard index (AHI): 0.74

Structural Mitigation: None

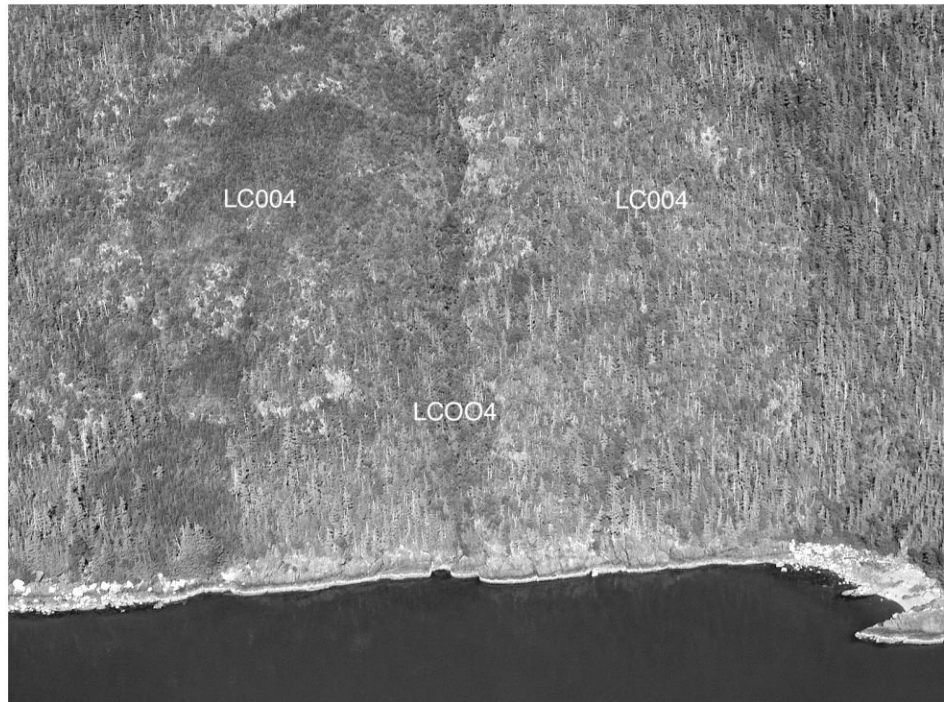
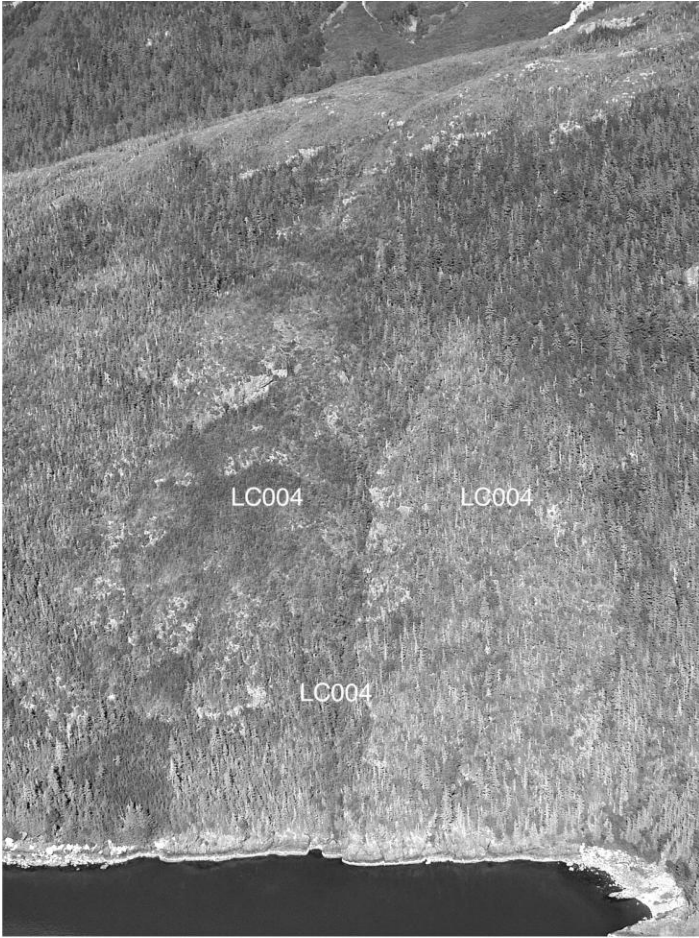
Structurally Mitigated AHI: 0.74

AHI with Forecasting and Exploders: 0.22



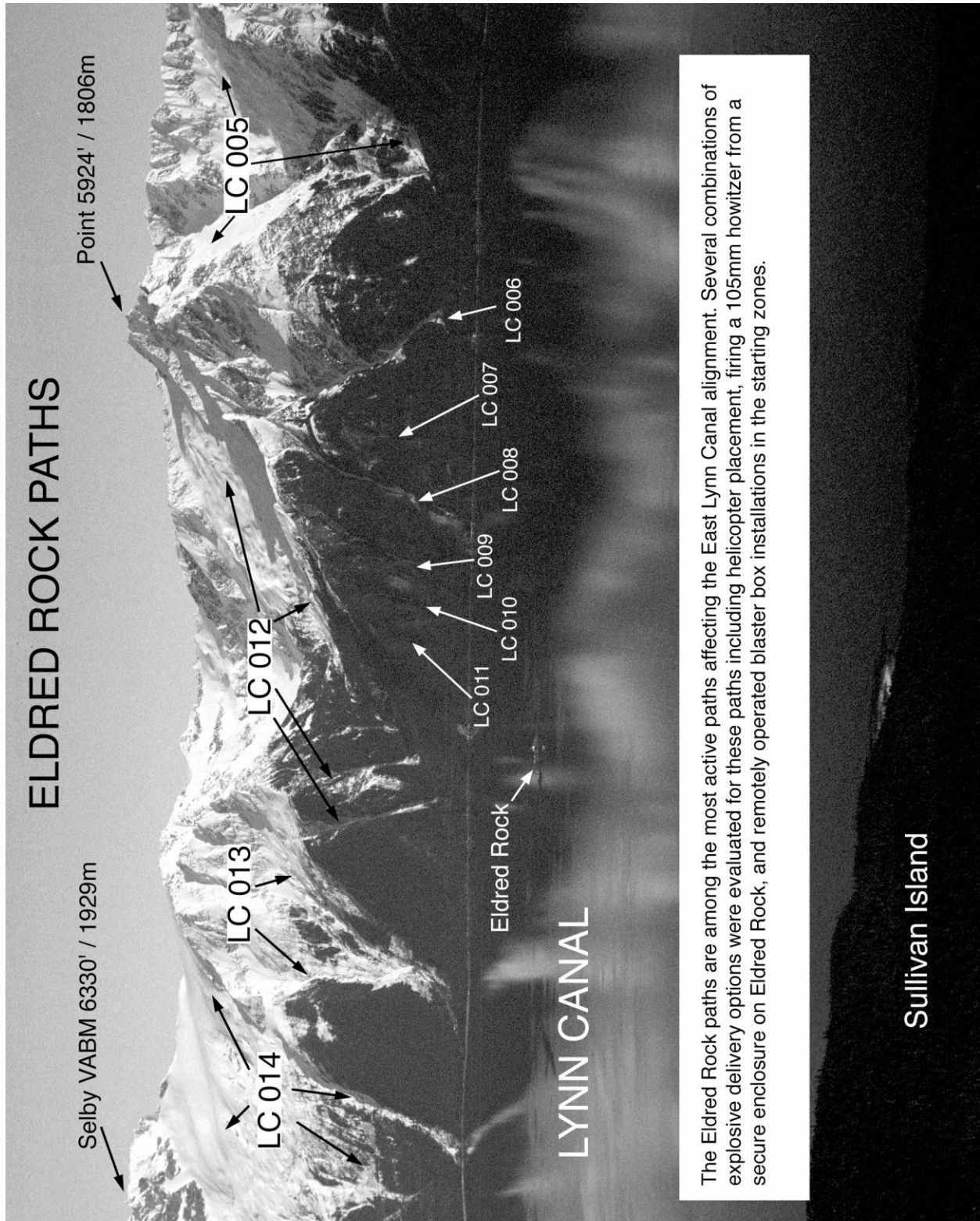
Path: LC003-1

Path Group:	North Kensington
Latitude-Longitude:	58.544894 -135.093227
Max Width:	380 feet / 116 meters
Typical Width:	0 feet / meters (usually stops above alignment)
Starting Elevation:	1500 feet / 457 meters
Elevation Class:	medium low
Path Size:	small
Starting Zone Characteristics:	landslide scar
Start Aspect:	WSW
Path Type:	2001 landslide scar
Runout Angle:	decreases moderately
Unmitigated avalanche hazard index (AHI):	0.02
Structural Mitigation:	None
Structurally Mitigated AHI:	0.02
AHI with Forecasting and Exploders:	0.01



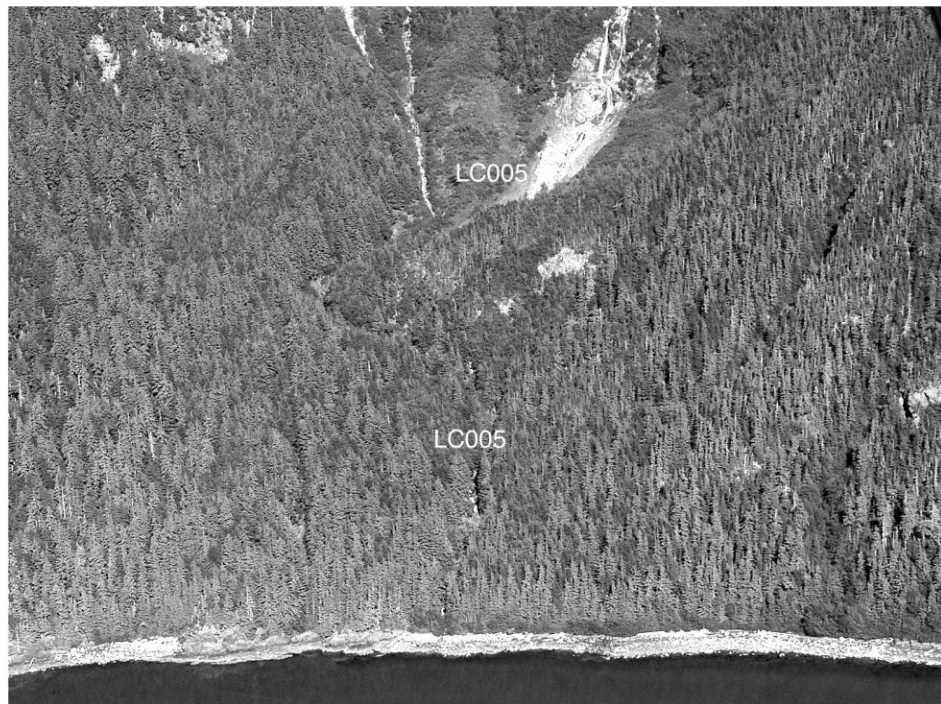
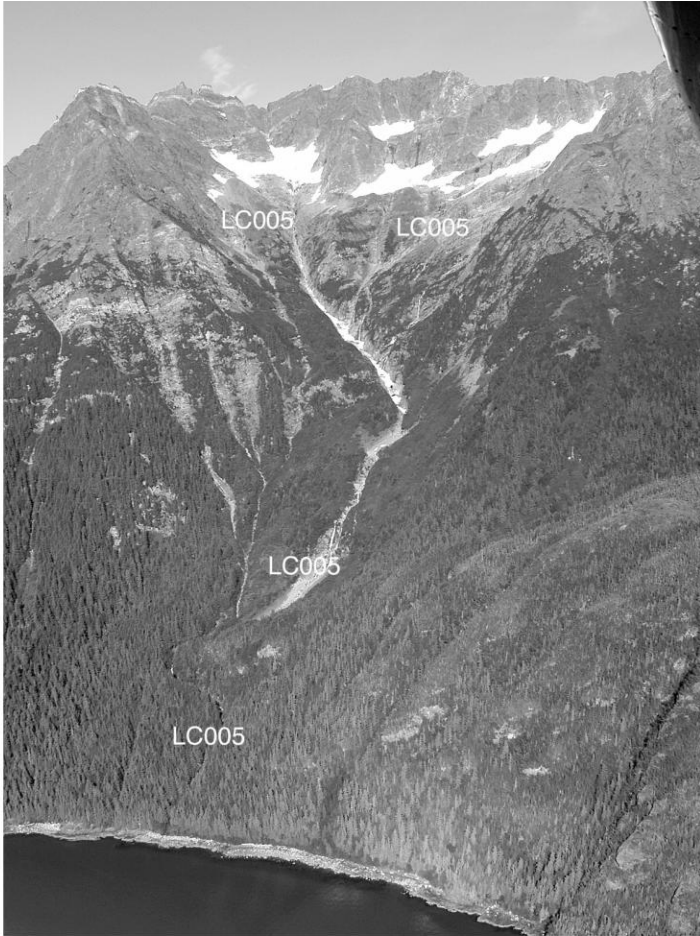
Path: LC004

Path Group:	North Kensington
Latitude-Longitude:	58.563007 -135.102606
Max Width:	1330 feet / 405 meters
Typical Width:	140 feet / 43 meters
Starting Elevation:	1000 feet / 305 meters
Elevation Class:	low
Path Size:	small
Starting Zone Characteristics:	open scrub forest
Start Aspect:	WSW
Path Type:	open scrub forest and small gully
Runout Angle:	steep
Unmitigated avalanche hazard index (AHI):	0.08
Structural Mitigation:	None
Structurally Mitigated AHI:	0.08
AHI with Forecasting and Exploders:	0.02



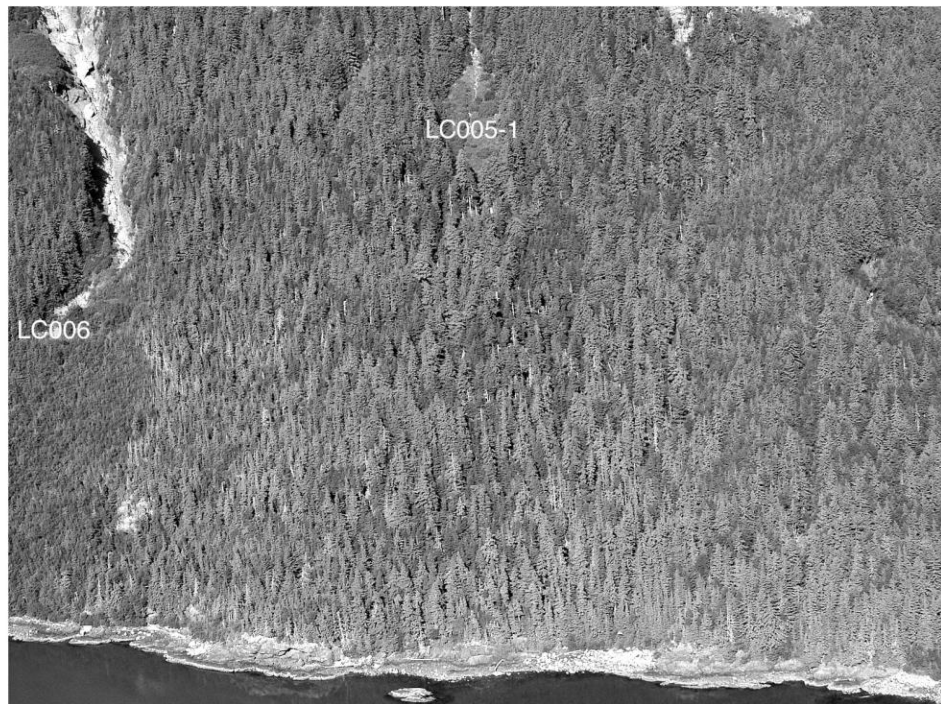
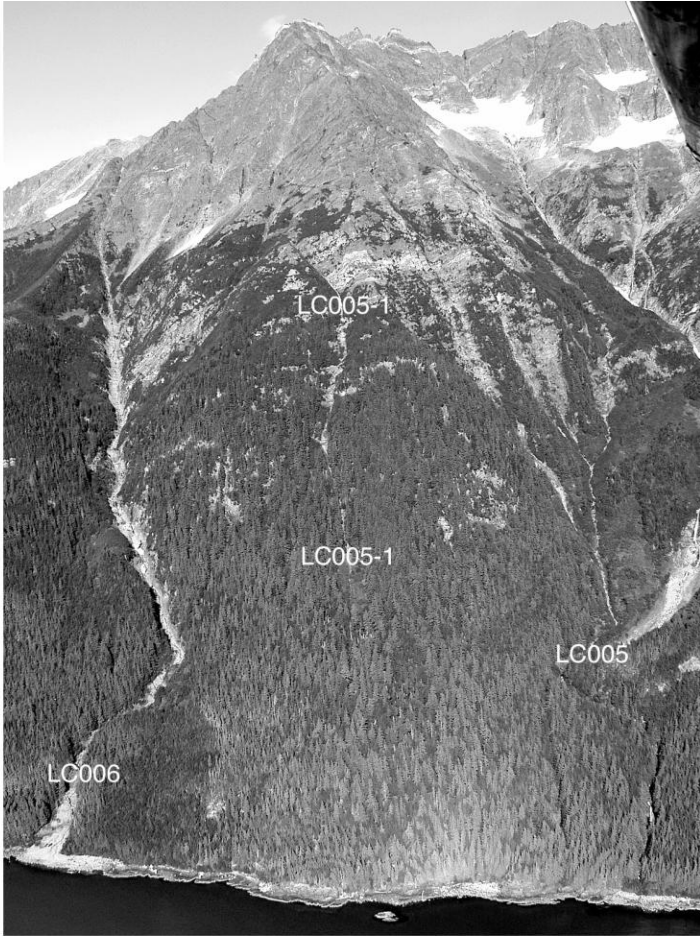
This Page Left Intentionally Blank

DRAFT



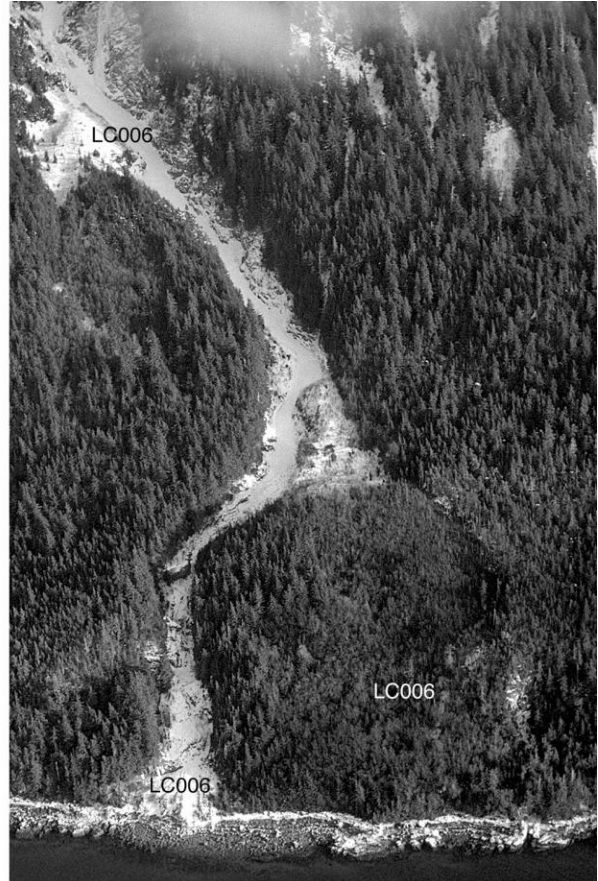
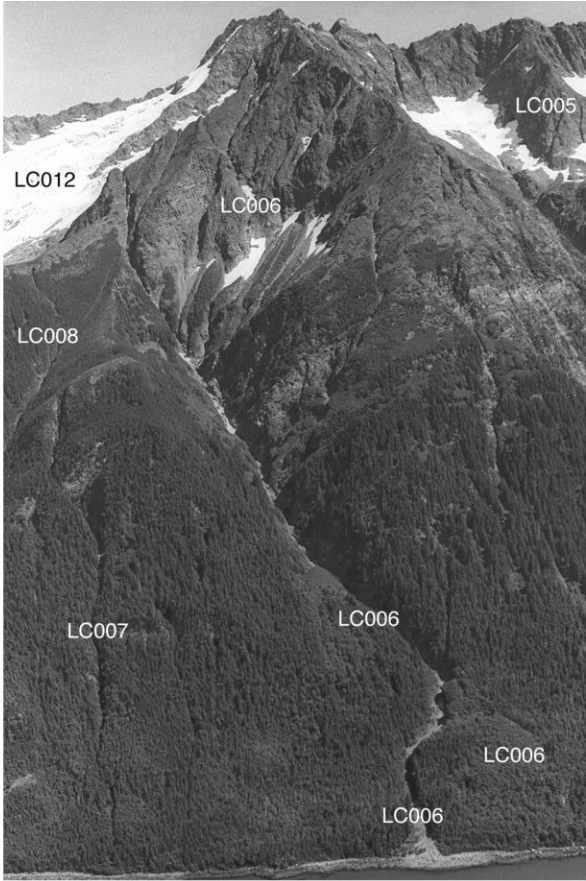
Path: LC005

Path Group:	Eldred Rock
Latitude-Longitude:	58.571584 -135.101956
Max Width:	1150 feet / 351 meters
Typical Width:	150 feet / 46 meters
Starting Elevation:	5500 feet / 1676 meters
Elevation Class:	high
Path Size:	large
Starting Zone Characteristics:	big bowl
Start Aspect:	W
Path Type:	confined to 600' (183 m); steep gully below
Runout Angle:	usually stops on bench; steep again below
Unmitigated avalanche hazard index (AHI):	2.17
Structural Mitigation:	Bridge 0.2 x
Structurally Mitigated AHI:	0.43
AHI with Forecasting and Exploders:	0.13



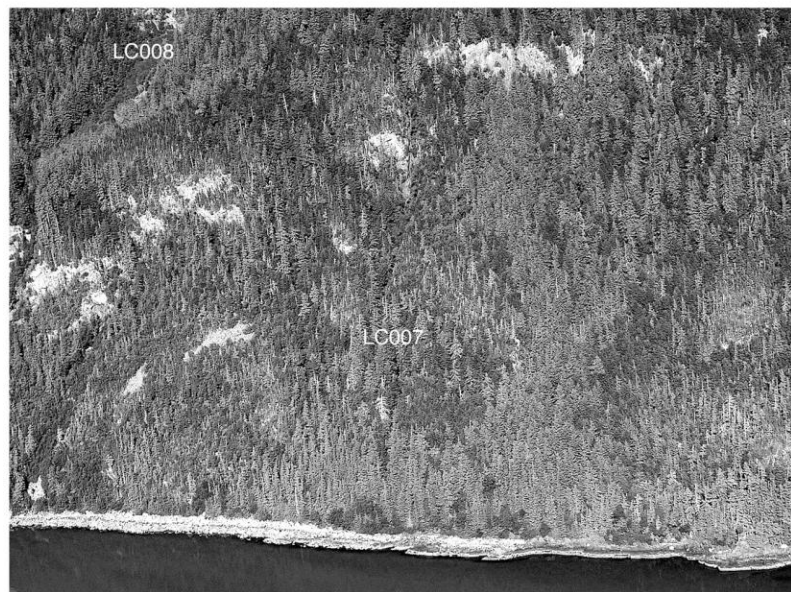
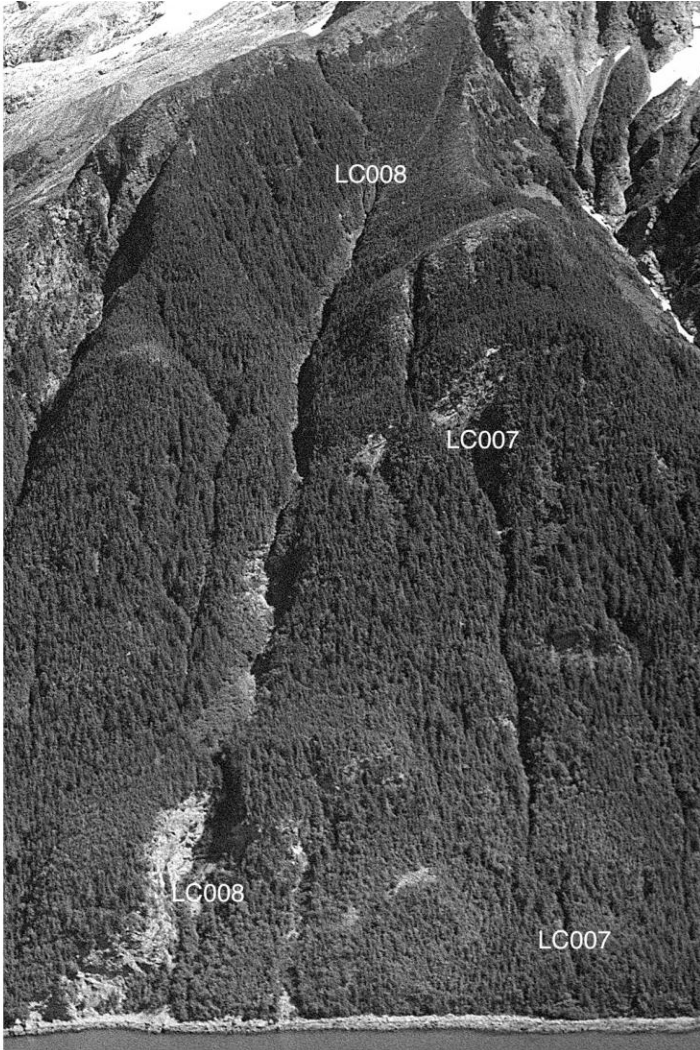
Path: LC005-1

Path Group:	Eldred Rock
Latitude-Longitude:	58.572924 -135.102566
Max Width:	100 feet / 30 meters
Typical Width:	0 feet / meters (usually stops above alignment)
Starting Elevation:	3100 feet / 945 meters
Elevation Class:	high
Path Size:	small
Starting Zone Characteristics:	slight gully
Start Aspect:	WSW
Path Type:	shallow gully
Runout Angle:	decreases; usually stops above alignment
Unmitigated avalanche hazard index (AHI):	0.01
Structural Mitigation:	None
Structurally Mitigated AHI:	0.01
AHI with Forecasting and Exploders:	0.00



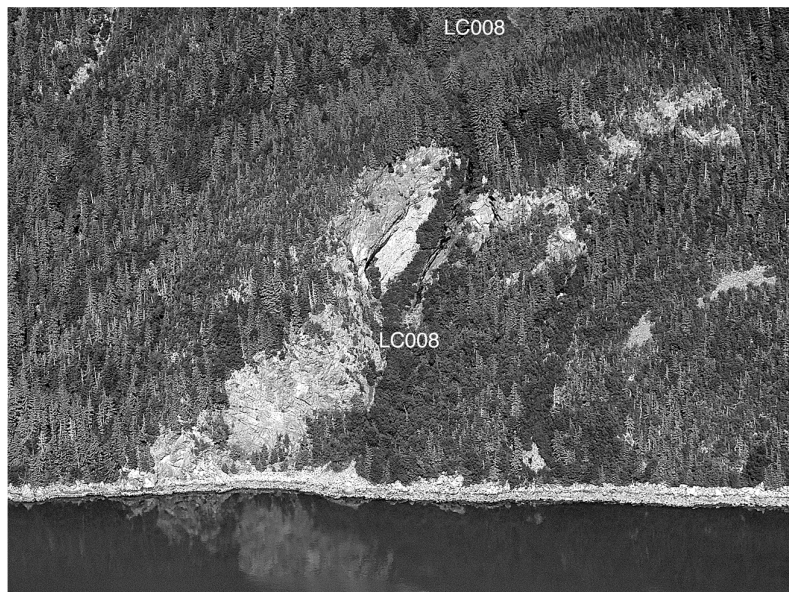
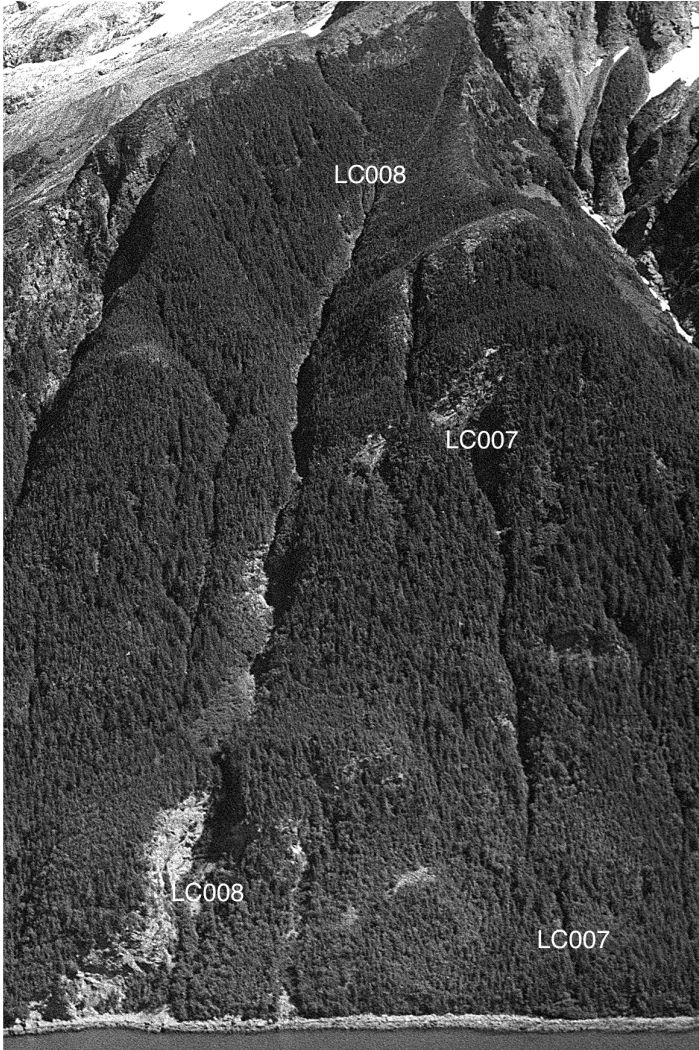
Path: LC006

Path Group:	Eldred Rock
Latitude-Longitude:	58.574197 -135.102504
Max Width:	1200 feet / 366 meters
Typical Width:	270 feet / 82 meters
Starting Elevation:	5100 feet / 1554 meters
Elevation Class:	high
Path Size:	very large
Starting Zone Characteristics:	big gullied bowl
Start Aspect:	W
Path Type:	classic confined, angled track
Runout Angle:	decreases moderately
Unmitigated avalanche hazard index (AHI):	42.67
Structural Mitigation:	Bridge 0.2x
Structurally Mitigated AHI:	8.53
AHI with Forecasting and Exploders:	2.56



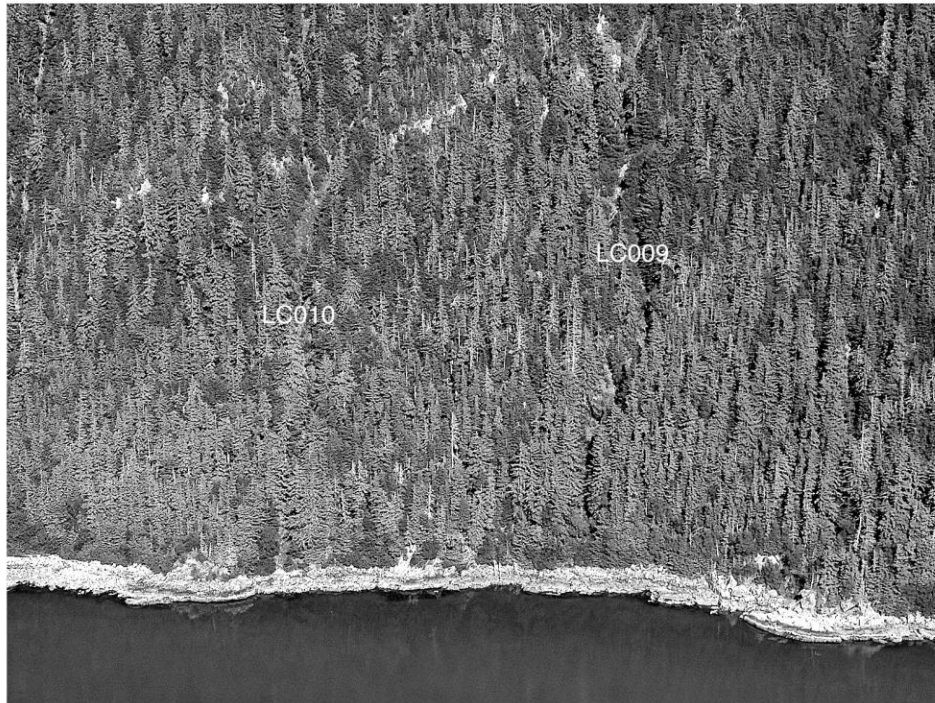
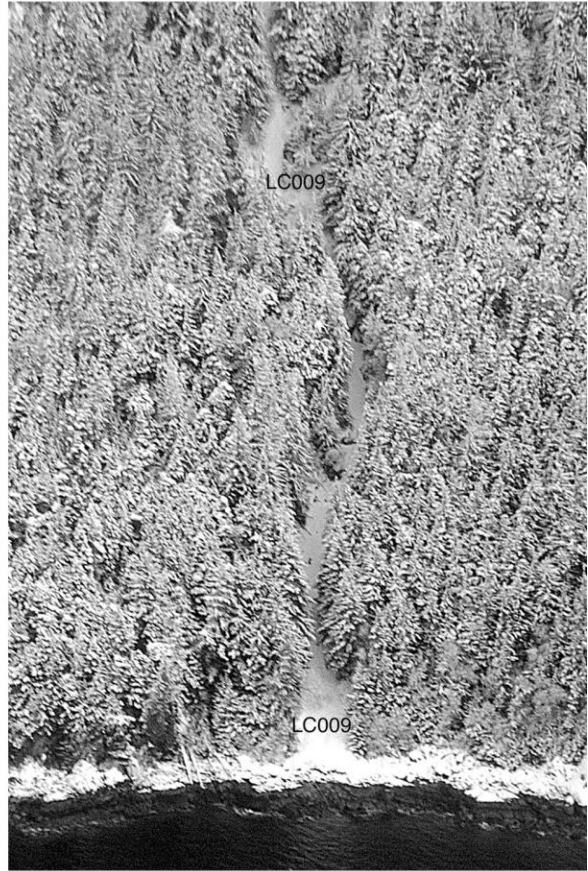
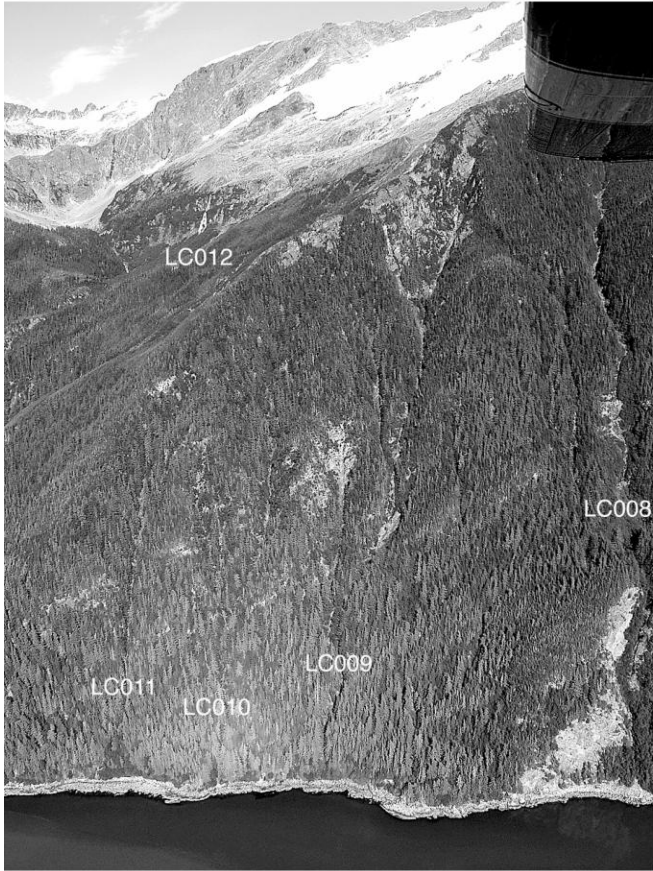
Path: LC007

Path Group:	Eldred Rock
Latitude-Longitude:	58.575893 -135.102543
Max Width:	380 feet / 116 meters
Typical Width:	75 feet / 23 meters
Starting Elevation:	2100 feet / 640 meters
Elevation Class:	medium high
Path Size:	small
Starting Zone Characteristics:	small bowl/gully
Start Aspect:	W
Path Type:	narrow gully
Runout Angle:	decreases; usually stops above alignment
Unmitigated avalanche hazard index (AHI):	0.17
Structural Mitigation:	None
Structurally Mitigated AHI:	0.17
AHI with Forecasting and Exploders:	0.05



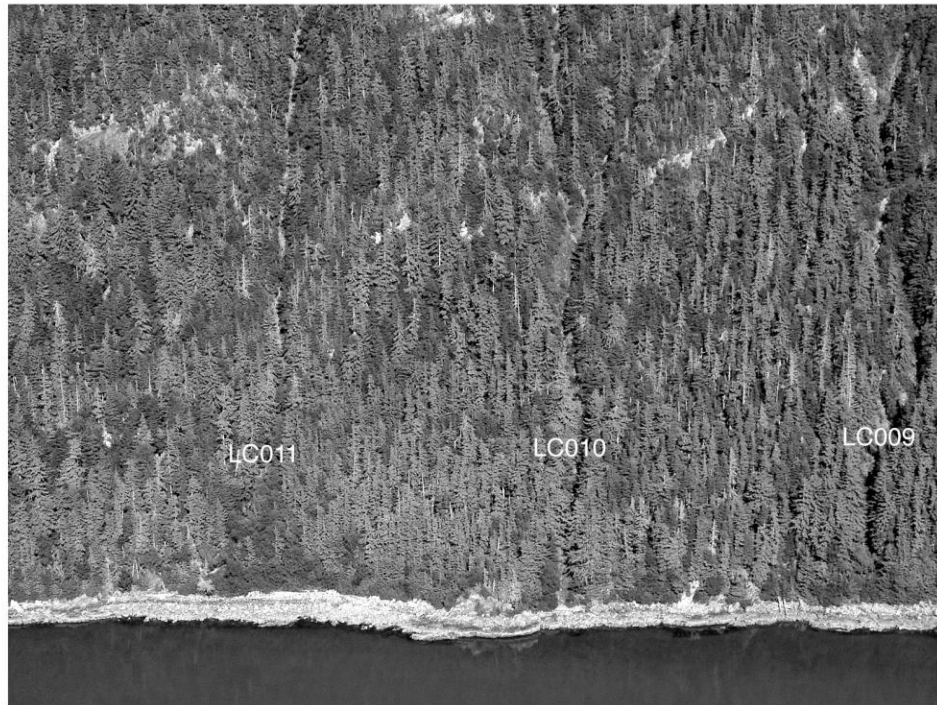
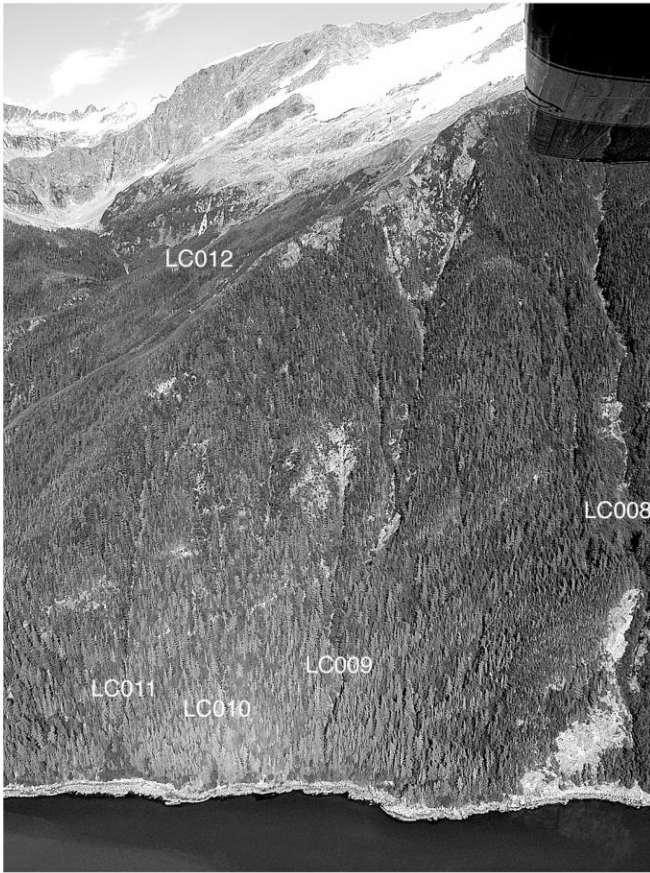
Path: LC008

Path Group:	Eldred Rock
Latitude-Longitude:	58.580951 -135.102467
Max Width:	1040 feet / 317 meters
Typical Width:	170 feet / 52 meters
Starting Elevation:	3400 feet / 1036 meters
Elevation Class:	high
Path Size:	medium
Starting Zone Characteristics:	medium bowl
Start Aspect:	W
Path Type:	classic confined
Runout Angle:	decreases; usually stops above alignment
Unmitigated avalanche hazard index (AHI):	3.99
Structural Mitigation:	Bridge 0.2x
Structurally Mitigated AHI:	0.80
AHI with Forecasting and Exploders:	0.24



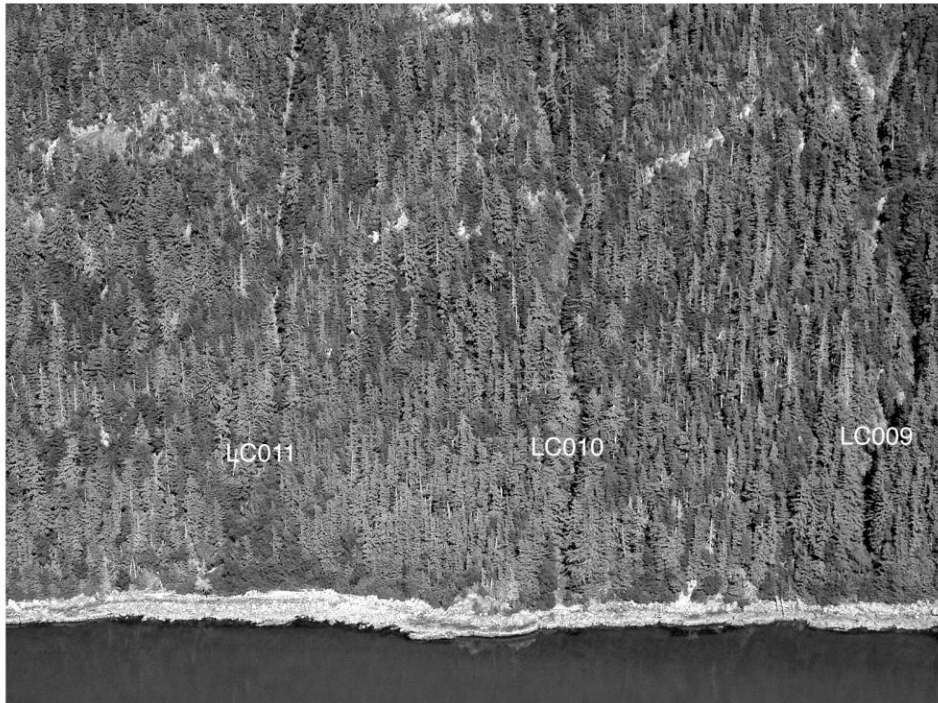
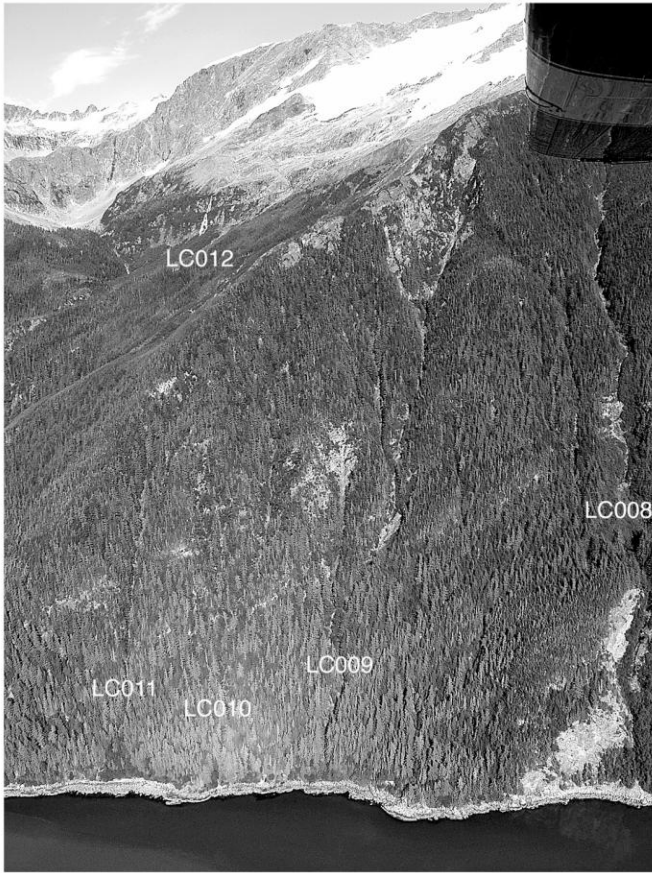
Path: LC009

Path Group:	Eldred Rock
Latitude-Longitude:	58.582368 -135.102472
Max Width:	110 feet / 34 meters
Typical Width:	90 feet / 27 meters
Starting Elevation:	2700 feet / 823 meters
Elevation Class:	medium high
Path Size:	small
Starting Zone Characteristics:	small bowl and gullies
Start Aspect:	W
Path Type:	narrow gully
Runout Angle:	slight decrease
Unmitigated avalanche hazard index (AHI):	4.49
Structural Mitigation:	None
Structurally Mitigated AHI:	4.49
AHI with Forecasting and Exploders:	1.35



Path: LC010

Path Group:	Eldred Rock
Latitude-Longitude:	58.58277 -135.102473
Max Width:	100 feet / 30 meters
Typical Width:	80 feet / 24 meters
Starting Elevation:	1500 feet / 457 meters
Elevation Class:	medium low
Path Size:	small
Starting Zone Characteristics:	narrow gully
Start Aspect:	W
Path Type:	narrow gully
Runout Angle:	slight decrease
Unmitigated avalanche hazard index (AHI):	2.99
Structural Mitigation:	None
Structurally Mitigated AHI:	2.99
AHI with Forecasting and Exploders:	0.90



Path: LC011

Path Group: Eldred Rock

Latitude-Longitude: 58.583286 -135.102475

Max Width: 110 feet / 34 meters

Typical Width: 90 feet / 27 meters

Starting Elevation: 1500 feet / 457 meters

Elevation Class: medium low

Path Size: small

Starting Zone Characteristics: narrow gully

Start Aspect: W

Path Type: narrow gully

Runout Angle: slight decrease

Unmitigated avalanche hazard index (AHI): 2.68

Structural Mitigation: None

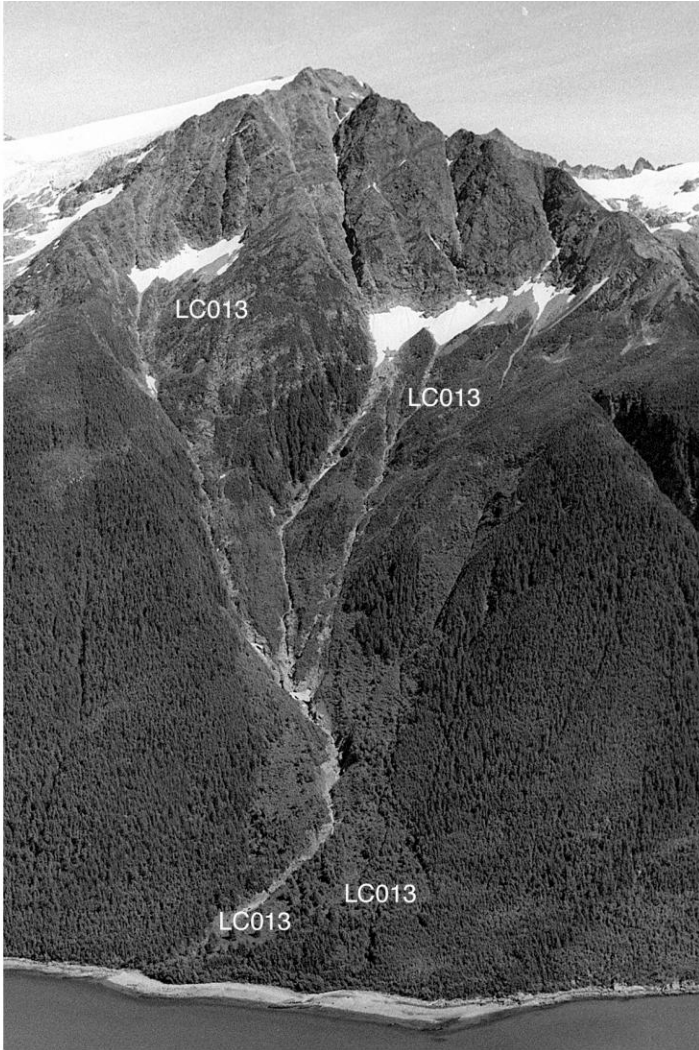
Structurally Mitigated AHI: 2.68

AHI with Forecasting and Exploders: 0.80



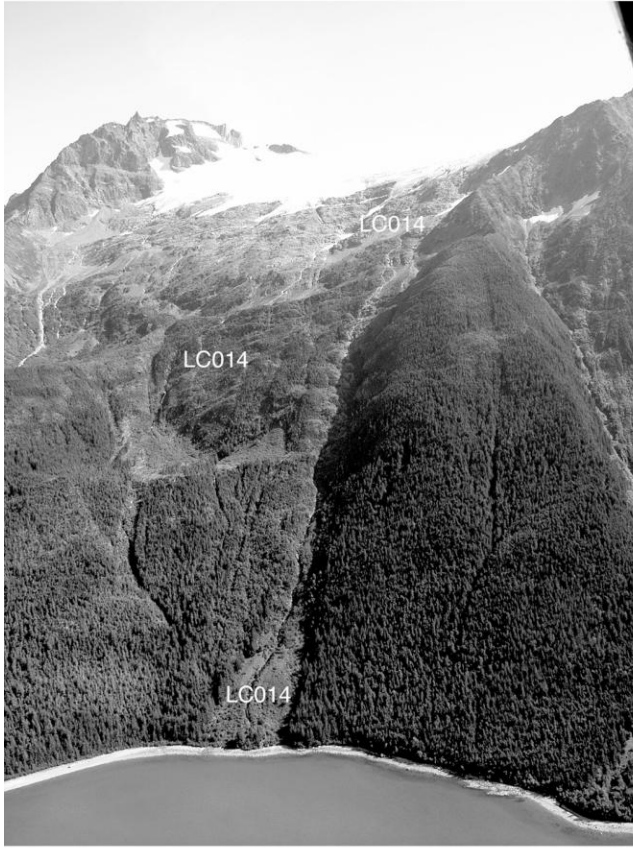
Path: LC012

Path Group:	Eldred Rock
Latitude-Longitude:	58.585938 -135.102898
Max Width:	1190 feet / 363 meters
Typical Width:	110 feet / 34 meters
Starting Elevation:	5924 feet / 1806 meters
Elevation Class:	high
Path Size:	large
Starting Zone Characteristics:	big bowl and broad gullies
Start Aspect:	W
Path Type:	bowl & gullies to 500' (153m); narrow gully
Runout Angle:	moderate decrease to usual stop on bench; steep
Unmitigated avalanche hazard index (AHI):	3.34
Structural Mitigation:	Bridge 0.2x
Structurally Mitigated AHI:	0.67
AHI with Forecasting and Exploders:	0.20



Path: LC013

Path Group:	Eldred Rock
Latitude-Longitude:	58.593939 -135.103925
Max Width:	2860 feet / 872 meters
Typical Width:	340 feet / 104 meters
Starting Elevation:	5300 feet / 1615 meters
Elevation Class:	high
Path Size:	very large
Starting Zone Characteristics:	two big gullied bowls
Start Aspect:	W
Path Type:	classic confined
Runout Angle:	decreases gradually
Unmitigated avalanche hazard index (AHI):	1.34
Structural Mitigation:	None
Structurally Mitigated AHI:	1.34
AHI with Forecasting and Exploders:	0.40



Path: LC014

Path Group:	Eldred Rock
Latitude-Longitude:	58.595964 -135.103751
Max Width:	750 feet / 229 meters
Typical Width:	120 feet / 37 meters
Starting Elevation:	4700 feet / 1432 meters
Elevation Class:	high
Path Size:	very large
Starting Zone Characteristics:	rollover, very broad bowl
Start Aspect:	W
Path Type:	broad confined main path; broad track
Runout Angle:	decreases gradually
Unmitigated avalanche hazard index (AHI):	8.79
Structural Mitigation:	33 foot / 10meter elevated fill 0.5x
Structurally Mitigated AHI:	4.40
AHI with Forecasting and Exploders:	1.32