



Juneau Access Improvements Project Final Supplemental Environmental Impact Statement

Revised Appendix BB Revenues and Expenditures Report for Lynn Canal, Fiscal Years 2005–2015

Prepared for:

**Alaska Department of Transportation
& Public Facilities
6860 Glacier Highway
Juneau, Alaska 99801-7999**

**State Project Number: 71100
Federal Project Number: STP-000S(131)**

Prepared by:

**HDR
2525 C Street, Suite 500
Anchorage, Alaska 99503**

2017

This page intentionally left blank.

Executive Summary

This report is source documentation for the Juneau Access Improvements (JAI) project to identify state costs for transportation in the Lynn Canal corridor and updates the *Lynn Canal Corridor Revenues and Expenditures 2001 & 2002* and *Lynn Canal Corridor Revenues and Expenditures 2003 & 2004* reports prepared in support of the JAI Project.

It provides Alaska Marine Highway System (AMHS) revenue and expenditures for Fiscal Years (FY) 2005 through 2015 (July 1, 2004, to June 30, 2015) statewide and for the Lynn Canal corridor, which includes the communities of Juneau (Auke Bay), Haines, and Skagway.

Annual system-wide revenue and expenditures for the AMHS are published each year in compliance with Alaska Statute (AS) 19.65.080. This information is found in AMHS *Annual Traffic Volume Reports*, *Annual Financial Reports*¹ (AFR), and ferry schedules. The total system-wide revenues in FY15 were approximately \$54.8 million (34 percent of system-wide expenditures), which was more than the FY05 through FY15 average revenue of approximately \$50.5 million (35 percent of the average expenditures). Expenditures in FY15 were approximately \$160.8 million, which is substantially greater than the FY05 through FY15 average expenditure of approximately \$148.6 million. The state support in FY15 was approximately \$106.0 million (66 percent of system-wide expenditures), which was higher than the FY05 through FY15 average state support of approximately \$98.1 million (66 percent of the average system-wide operating expenditures). A summary of revenues and expenditures for FY05 through FY15 is included in Table ES-1.

Table ES-1: FY05–FY15 AMHS System-wide Summary

Fiscal Year	Operating Expenditures (\$000)	Revenues (\$000)	Revenues %	State Support (\$000)	State Support %
FY05	101,282	46,848	46	54,434	54
FY06	135,431	51,781	38	83,650	62
FY07	143,721	49,562	34	94,159	66
FY08	143,094	48,242	34	94,852	66
FY09	141,561	47,905	34	93,656	66
FY10	140,261	47,002	34	93,259	66
FY11	158,732	48,602	31	110,130	69
FY12	171,042	54,654	32	116,388	68
FY13	172,527	53,881	31	118,646	69
FY14	166,022	51,769	31	114,253	69
FY15	160,798	54,791	34	106,007	66
Average	148,588	50,458	35	98,130	66

Source: AMHS 2016 (see Appendix A).

Note: This information is also included in the AFR for each year.

¹ Annual Traffic Volume Reports and Annual Financial Reports for FY011 through FY15 are available on the AMHS website <http://www.dot.state.ak.us/amhs/reports.shtml>

AMHS does not record or report revenues, expenditures, or state support specific to Lynn Canal. AMHS service in Lynn Canal includes trips originating and ending in Lynn Canal, as well as trips that have portions both within and outside of Lynn Canal. To identify the revenues and expenditures for Lynn Canal, AMHS used data from their Reservations and Management System (RMS3), and reconciled it using AFRs for FY05 through FY15. Based on RMS3 data analysis, the cost to provide AMHS service in Lynn Canal in FY15 was approximately \$25.1 million (15.6 percent of system-wide expenditures), which is greater than the FY05 through FY15 average expenditure of approximately \$18.6 million for Lynn Canal. The FY15 revenues for Lynn Canal service were approximately \$5.6 million (10 percent of system-wide revenues), which is more than the FY05 through FY15 average revenue of approximately \$6.1 million for Lynn Canal. The state support in Lynn Canal for FY15 was approximately \$19.5 million (18 percent of the system-wide state support), which is greater than the FY05 through FY15 average state support of \$12.5 million for Lynn Canal. A summary of revenues, expenditures and state support for service in Lynn Canal for FY05 through FY15 is presented in Table ES-2.

Table ES-2: FY05–FY15 AMHS Lynn Canal Corridor Summary

Fiscal Year	Operating Expenditures (\$000)	Revenues (\$000)	Revenues %	State Support (\$000)	State Support %
FY05	13,438	6,819	51	6,619	49
FY06	16,016	6,785	42	9,231	58
FY07	15,408	5,769	37	9,639	63
FY08	17,479	6,444	37	11,035	63
FY09	17,157	6,096	36	11,060	64
FY10	16,612	6,152	37	10,461	63
FY11	18,817	5,897	31	12,920	69
FY12	20,401	6,577	32	13,824	68
FY13	23,242	5,927	26	17,315	75
FY14	20,695	5,041	24	15,654	76
FY15	25,061	5,559	22	19,501	78
Average	18,630	6,097	34	12,533	66

Source: AMHS 2016 (see Appendix A).

Table of Contents

1.0	Introduction.....	1
2.0	Fiscal Year 2005 through 2015 Revenues	1
2.1	System-wide Revenues.....	1
2.2	Lynn Canal Revenues.....	2
3.0	AMHS Expenditures for Fiscal Years 2005 through 2015.....	4
3.1	System-wide Expenditures	4
3.2	Lynn Canal Expenditures	6
4.0	AMHS State Support for Fiscal Years 2005 through 2015	8
4.1	System-wide State Support.....	8
4.2	Lynn Canal State Support.....	8
5.0	Inflation Rate.....	9
6.0	Conclusion	11

List of Tables

Table ES-1: FY05–FY15 AMHS System-wide Summary	i
Table ES-2: FY05–FY15 AMHS Lynn Canal Corridor Summary	ii
Table 2-1: AMHS System-wide Revenues by Sales Component, FY05–FY15 (\$000).....	1
Table 2-2: AMHS Revenues Generated in Lynn Canal by Sales Component, FY05–FY15 (\$000).....	3
Table 3-1: Total System Operating Expenditures, FY05–FY15 (\$000).....	5
Table 3-2: Lynn Canal Expenditures, FY05–FY15 (\$000)	7
Table 4-1: FY05–FY15 AMHS System-wide Support.....	8
Table 4-2: FY05–FY15 State Support for Lynn Canal Corridor	9
Table 5-1: FY05–FY15 Lynn Canal Corridor and System-wide Revenues, Operating Costs, State Support and Annual Inflation Rate	10

List of Figures

Figure 2-1: AMHS System-wide Revenues by Sales Component, FY05–FY15	2
Figure 2-2: AMHS Revenues Generated Lynn Canal by Sales Component, FY05–FY15	4
Figure 3-1: Total System Operating Expenditures, FY05–FY15 (\$000)	5
Figure 3-2: Lynn Canal Expenditures, FY05–FY15.....	7
Figure 5-1: FY05–FY15 Lynn Canal Corridor and System-wide Revenues, Operating Costs, State Support Percent Change and Average Inflation Rate	11

Appendices

Appendix A	AMHS Data
Appendix B	AMHS Revenues and Expenditures by Vessel, Fiscal Years 2004-2015
Appendix C	Annual Average Daily Traffic (ADT) 2005 to 2015

This page intentionally left blank.

1.0 Introduction

This report updates the *Lynn Canal Corridor Revenues and Expenditures 2001 & 2002* and *Lynn Canal Corridor Revenues and Expenditures 2003 & 2004* reports prepared in support of the Juneau Access Improvements (JAI) Project Draft Supplemental and Final Environmental Impact Statements (EISs). Using Alaska Marine Highway System (AMHS) data for Fiscal Years (FY) 2005 through 2015 (July 1, 2004, to June 30, 2015), this update presents FY05 to FY15 revenues and expenditures for the AMHS system statewide and the Lynn Canal corridor, including the communities of Juneau (Auke Bay), Haines, and Skagway.

AMHS revenues are discussed in Section 2.0, expenditures are discussed in Section 3.0, state support is discussed in Section 4.0, and inflation rates are discussed in Section 5.0.

2.0 Fiscal Year 2005 through 2015 Revenues

This section discusses AMHS reported system-wide (Section 2.1) and Lynn Canal (Section 2.2) revenues for FY05 through FY15.

2.1 System-wide Revenues

AMHS reports its total revenue based on passenger and vehicle ticket sales, stateroom usage, and passenger services. AMHS *Annual Financial Reports* (AFRs), which are published for each fiscal year, include total revenues by vessel (see Appendices A and B). Total AMHS reported system-wide revenues, including non-vessel and restricted revenues, in FY15 were approximately \$54.8 million (Table 2-1). From FY05 through FY15, total system-wide revenues averaged approximately \$50.5 million. Passenger services revenue averaged approximately \$4.1 million, stateroom usage revenue averaged approximately \$5.4 million, passenger ticket revenue averaged approximately \$16.8 million and vehicle ticket revenue averaged approximately \$23.0 million. A summary of system-wide revenues by sales component for FY05 through FY15 is presented in Table 2-1 and shown in Figure 2-1.

Table 2-1: AMHS System-wide Revenues by Sales Component, FY05–FY15 (\$000)

Fiscal Year	Passenger Tickets	Vehicle Tickets	Passenger Services	Stateroom Usage	Total System Revenues ¹
2005	17,591.2	19,651.8	3,298.0	5,057.0	46,848.0
2006	19,006.8	23,175.2	2,981.0	5,986.0	51,781.0
2007	17,025.8	21,874.2	3,793.0	5,683.0	49,562.0
2008	16,551.9	21,972.1	3,913.0	5,076.0	48,242.0
2009	15,655.8	21,720.2	4,089.0	4,687.0	47,905.0
2010	15,352.9	22,014.1	3,810.0	4,692.0	47,002.0
2011	15,919.4	22,325.9	4,082.4	5,279.3	48,602.0
2012	17,480.7	25,557.3	4,657.1	5,810.9	54,654.0
2013	16,425.5	25,358.5	4,792.9	6,136.1	53,881.3
2014	16,546.9	24,404.4	4,378.3	5,339.9	51,769.4

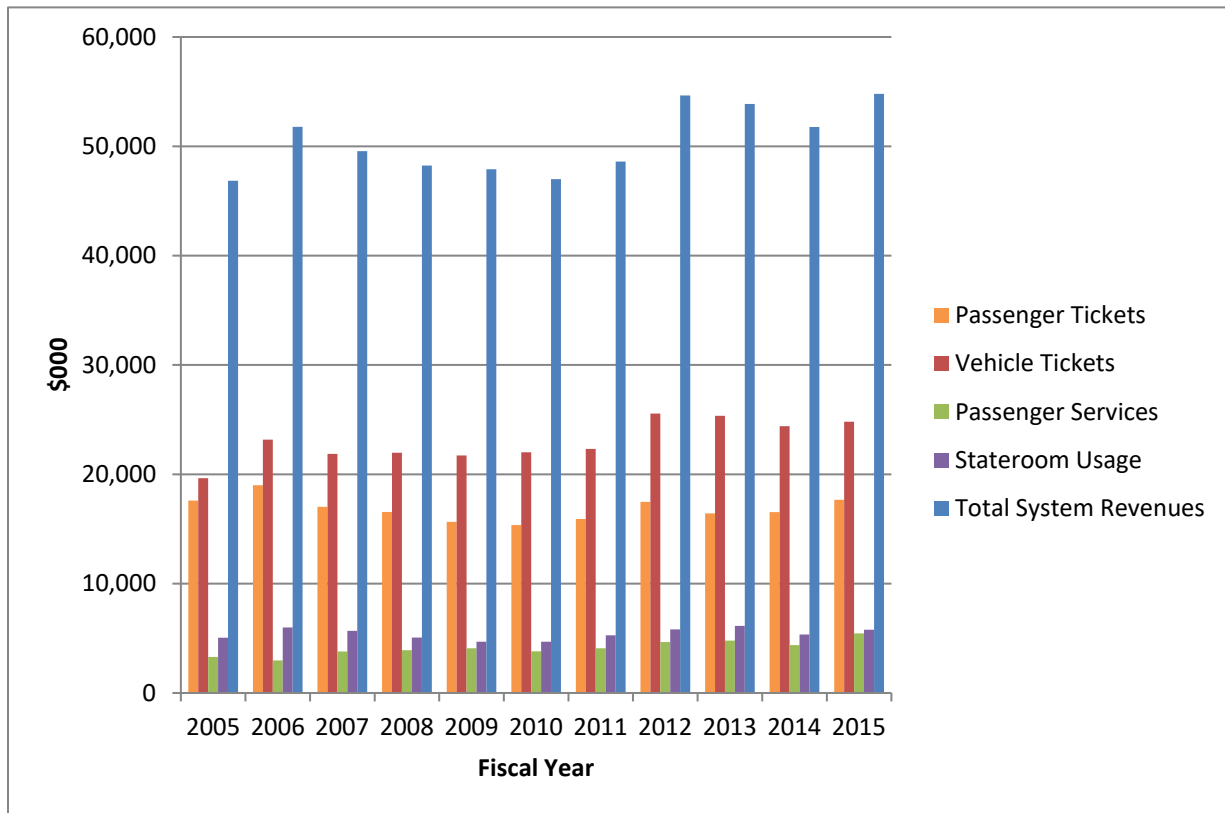
Fiscal Year	Passenger Tickets	Vehicle Tickets	Passenger Services	Stateroom Usage	Total System Revenues ¹
2015	17,675.4	24,814.4	5,455.2	5,783.4	54,791.4
Average	16,839.3	22,988.0	4,113.6	5,411.9	50,458.0

Source: AMHS 2016 (see Appendix A).

Note: This information is also included in the AFR for each year.

¹ Total system revenues include non-vessel and restricted revenues.

Figure 2-1: AMHS System-wide Revenues by Sales Component, FY05–FY15



Source: AMHS 2016 (see Appendix A).

Note: This information is also included in the AFR for each year.

2.2 Lynn Canal Revenues

To obtain revenue information for Lynn Canal, AMHS used Reservations and Management System (RMS3) information. The RMS3 system does not record revenue in the same format as the financial reports; the RMS3 data includes passenger travel at actual tariff values, but excludes passenger service revenues. To calculate revenues for revenue components (i.e., passenger and vehicle ticket, stateroom, and passenger service sales), total vessel revenue dollars were broken into component parts using percentages (total revenue/component revenue) for passenger, vehicle, and staterooms, which were then extrapolated against the AFR values after accounting for the passenger service income.

AMHS used RMS3 data to calculate the percentage of passenger, vehicle, and stateroom revenues earned by each vessel traveling the Lynn Canal corridor. For travel originating and ending within Lynn Canal, no additional analysis or calculations were needed. For travel that had only portions of travel within Lynn Canal, passenger, car-deck, and stateroom tariff revenues were apportioned according to the percentage of total-miles that were traveled in Lynn Canal by vessel and by fiscal year. Passenger services revenues by vessel and year were calculated by applying the passenger service income to the Lynn Canal percentage of total vessel revenue for passenger tariffs by vessel and year. Appendix A presents system-wide RMS3 and AFR revenues, Lynn Canal percentage of total vessel revenues, and Lynn Canal calculated revenues by vessel for FY05 through FY15.

Total revenue in Lynn Canal in FY15 was calculated to be approximately \$5.6 million (Table 2-2). From FY05 through FY15, calculated total Lynn Canal revenue averaged approximately \$6.1 million. Passenger services revenue averaged approximately \$0.6 million, stateroom usage revenue averaged approximately \$0.4 million, passenger tickets averaged approximately \$2.4 million, and vehicle ticket revenue averaged approximately \$2.7 million for service in Lynn Canal. A summary of Lynn Canal revenues by sales component for FY05 through FY15 is presented in Table 2-2 and shown in Figure 2-2.

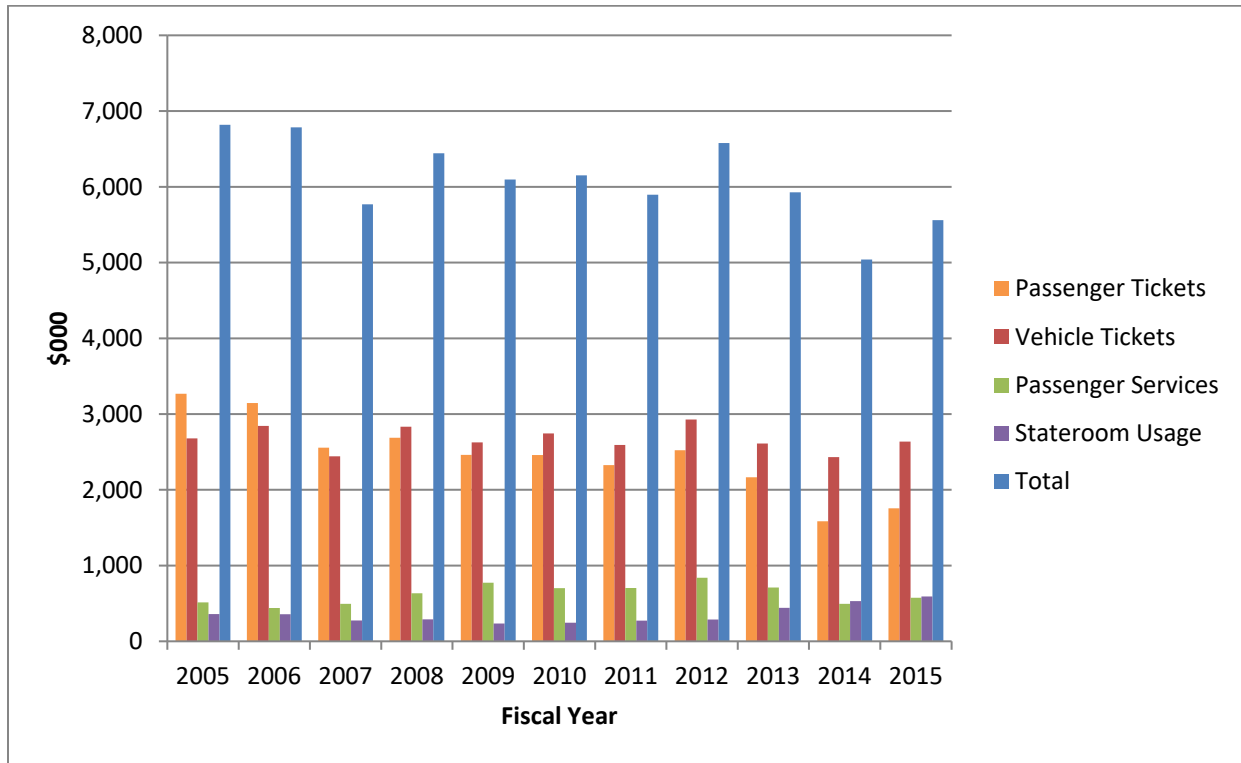
Table 2-2: AMHS Revenues Generated in Lynn Canal by Sales Component, FY05–FY15 (\$000)

Fiscal Year	Passenger Tickets	Vehicle Tickets	Passenger Services	Stateroom Usage	TOTAL
2005	3,267.9	2,677.8	514.6	358.6	6,818.9
2006	3,145.9	2,842.6	440.2	356.7	6,785.4
2007	2,555.6	2,442.5	495.7	274.9	5,768.6
2008	2,687.7	2,833.8	633.5	288.8	6,443.8
2009	2,460.8	2,626.4	773.8	235.4	6,096.5
2010	2,460.1	2,743.4	702.2	246.0	6,151.6
2011	2,325.2	2,593.2	704.7	273.4	5,896.5
2012	2,522.7	2,928.1	838.8	287.5	6,577.1
2013	2,165.3	2,610.4	709.7	441.6	5,927.0
2014	1,584.2	2,430.8	494.8	531.0	5,040.8
2015	1,756.4	2,635.9	574.6	592.3	5,559.2
Average	2,448.3	2,669.5	625.7	353.3	6,096.9

Source: AMHS 2016 (see Appendix A).

Note: Total may not match due to rounding

Figure 2-2: AMHS Revenues Generated Lynn Canal by Sales Component, FY05–FY15



Source: AMHS 2016 (see Appendix A).

3.0 AMHS Expenditures for Fiscal Years 2005 through 2015

This section discusses AMHS reported system-wide (Section 3.1) and Lynn Canal (Section 3.2) expenditures for FY05 through FY15.

3.1 System-wide Expenditures

AMHS AFRs, which are published for each fiscal year, include total expenditures by vessel (see Appendix A). These AFRs include system-wide expenditures such as marine vessel operations, overhaul, fuel, and unbudgeted AMHS Reimbursable Service Agreements [RSA] that are direct vessel expenditures. The reports also include expenditures for marine engineering, operations management, reservations and marketing, and shore operations but they are not directly attributed to individual vessels. The total for AMHS system-wide operating expenditures (including total operating expenditures by vessel and shoreside expenditures) for FY15 was approximately \$160.8 million. This is substantially higher than the annual average total system operating expenditure of approximately \$148.6 million for FY05 through FY15. Table 3-1 and Figure 3-1 present a summary of system expenditures for FY05 through FY15, including total non-fuel operating expenses, total fuel expenses, total shoreside costs, and total system operating costs.

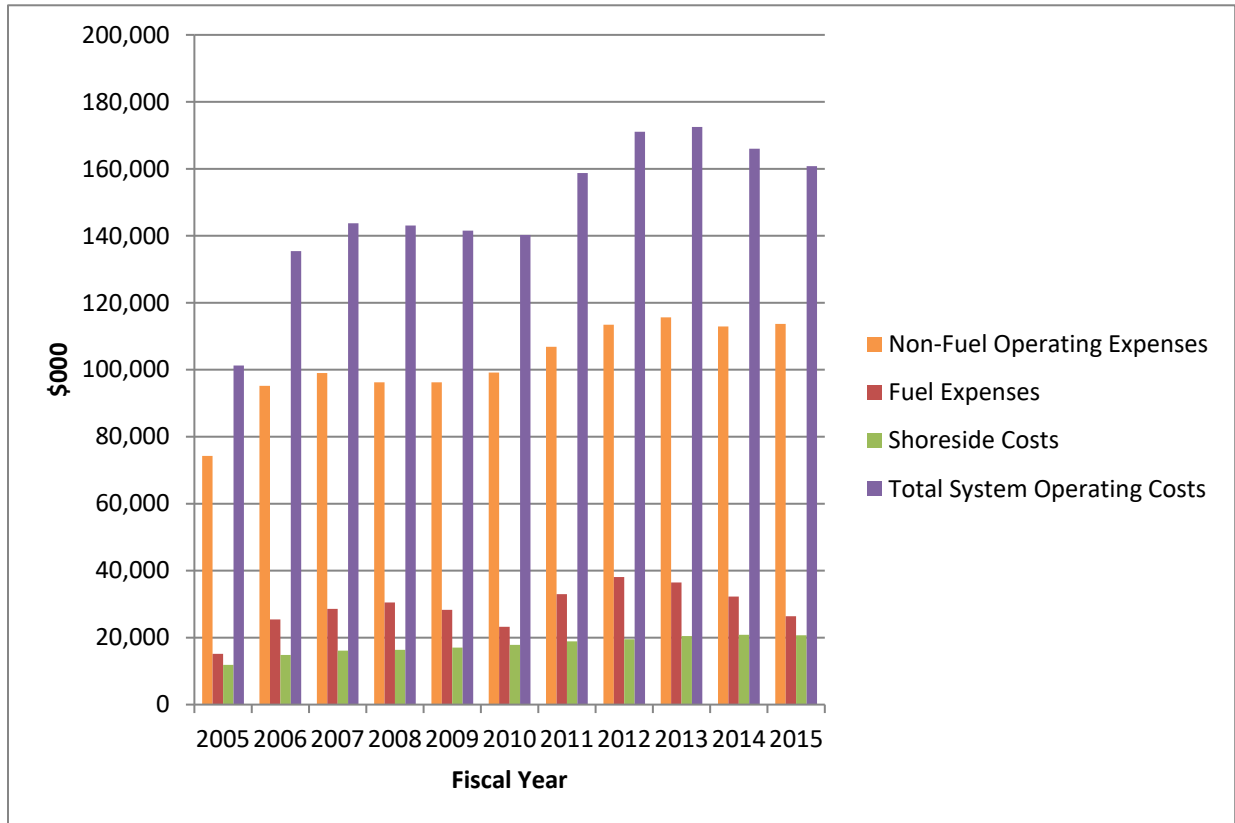
Table 3-1: Total System Operating Expenditures, FY05–FY15 (\$000)

Fiscal Year	Non-Fuel Operating Expenses	Fuel Expenses	Shoreside Costs	Total System Operating Costs
2005	74,247.1	15,166.9	11,868.0	101,282.0
2006	95,181.2	25,409.8	14,840.0	135,431.0
2007	99,028.3	28,584.7	16,108.0	143,721.0
2008	96,250.6	30,506.4	16,337.0	143,094.0
2009	96,259.3	28,284.7	17,017.0	141,561.0
2010	99,160.7	23,243.3	17,857.0	140,261.0
2011	106,838.6	32,994.4	18,899.0	158,732.0
2012	113,459.4	38,080.6	19,502.0	171,042.0
2013	115,635.0	36,452.1	20,440.0	172,527.0
2014	112,907.1	32,255.1	20,860.0	166,022.0
2015	113,705.1	26,401.0	20,692.0	160,798.0
Average	102,061.1	28,852.6	17,674.5	148,591.0

Source: AMHS 2016 (see Appendix A).

Note: This information is also included in the AFR for each year.

Figure 3-1: Total System Operating Expenditures, FY05–FY15 (\$000)



Source: AMHS 2016 (see Appendix A).

Note: This information is also included in the AFR for each year.

3.2 Lynn Canal Expenditures

To estimate the direct operating expenditures for Lynn Canal, AMHS used RMS3 data to determine what portion of the total miles and days of travel were attributable to each vessel traveling within Lynn Canal. These values were then used to calculate the fuel and non-fuel operating costs in Lynn Canal.

Fuel costs primarily occur during vessel transit and are based on miles traveled, while non-fuel costs such as vessel staffing are incurred during the entire trip and are based on operating hours. Fuel is also consumed to power lighting and heating systems, but this consumption is small compared to fuel used during transit. The methodology used in the *Lynn Canal Revenues and Expenditures 2003 & 2004* report attributed all costs based on hours of operation, and therefore overestimated costs associated with power consumption outside of transit costs. The current report uses a more detailed methodology to obtain a more accurate representation of expenditures². The method previously used tended to overestimate fuel expenditures in Lynn Canal due to port times, while the updated methodology underestimates fuel but to a lesser degree.

To determine the Lynn Canal portion of fuel costs, the percentage of Lynn Canal miles travelled was applied to the total fuel cost by vessel. Non-fuel costs were derived by applying the Lynn Canal-days percentage to the total non-fuel direct costs by vessel. Shore-side costs for Lynn Canal operations were calculated based on the following methodologies:

- Support Services, Marine Engineering, and Operations Management - total Lynn Canal direct vessel costs were calculated as a percentage of the total expenditures
- Reservations/Marketing - Total Lynn Canal revenues were calculated as a percentage of the total revenues
- Shore operations: The Juneau (Auke Bay), Haines, and Skagway terminal costs were calculated using a percentage of Lynn Canal embarking passengers and a percentage of total embarking passengers

Appendix A presents vessel days and miles, total non-fuel operating expenses, total fuel expenses, and total operating expenses by vessel, shoreside costs (e.g., support services, marine engineering, operations management, reservations and marketing, and shore operations), terminal costs, reservation and marketing sales, and the numbers of passengers that embark and disembark at the Lynn Canal ports for FY05 through FY15.

AMHS calculated operating costs for Lynn Canal for FY05 through FY15. For FY05 through FY15 total annual non-fuel operating expenses averaged approximately \$13.7 million, total annual fuel expenses averaged approximately \$2.1 million, annual shoreside costs averaged approximately \$2.8 million, and total annual operating costs averaged approximately \$18.6 million. The calculated expenditures for Lynn Canal in FY15 of approximately \$19.3 million for total non-fuel operating expenses, approximately \$2.2 million for total fuel expenses, approximately \$3.6 million for shoreside costs, and approximately \$25.1 million for total operating costs are approximately 25 percent higher than the 11-year average. Table 3-2 and

² An analysis of 2001-2004 expenditures using both methods indicated differences of less than two percent except for 2004, where the difference was close to 10%. The smaller number resulting from the newer methodology, \$10.4 million, will be reported in the SEIS.

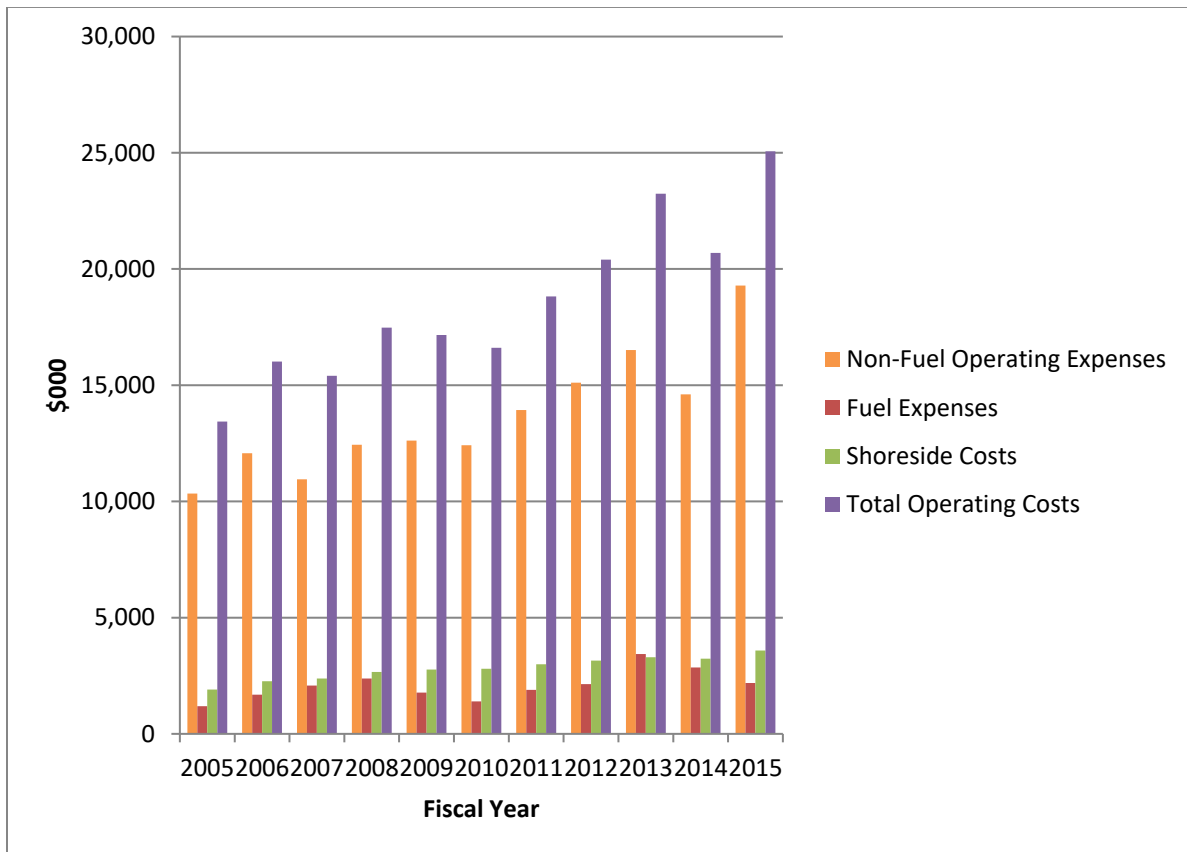
Figure 3-2 present a summary of Lynn Canal expenditures for FY05 through FY15, including total non-fuel operating expenses, total fuel expenses, total shoreside costs, and total operating costs.

Table 3-2: Lynn Canal Expenditures, FY05–FY15 (\$000)

Fiscal Year	Non-Fuel Operating Expenses	Fuel Expenses	Shoreside Costs	Total Operating Costs
2005	10,340.9	1,188.3	1,908.3	13,437.5
2006	12,072.6	1,682.7	2,261.1	16,016.4
2007	10,950.8	2,076.8	2,380.4	15,408.0
2008	12,438.3	2,377.8	2,662.9	17,479.0
2009	12,616.5	1,776.1	2,764.1	17,156.7
2010	12,416.0	1,394.9	2,801.4	16,612.3
2011	13,929.5	1,890.6	2,996.8	18,816.8
2012	15,673.4	2,138.6	3,195.8	21,077.8
2013	16,515.5	3,431.1	3,295.1	23,241.7
2014	14,609.5	2,853.6	3,231.7	20,694.8
2015	19,286.2	2,187.4	3,587.1	25,060.6
Average	13,662.4	2,090.7	2,821.9	18,575.0

Source: AMHS 2016 (see Appendix A).

Figure 3-2: Lynn Canal Expenditures, FY05–FY15



Source: AMHS 2016 (see Appendix A).

4.0 AMHS State Support for Fiscal Years 2005 through 2015

To maintain and operate the ferry system, AMHS depends on vessel-generated revenues (passenger and vehicle tickets, passenger services, and stateroom usage) as well as state funds appropriated annually by the legislature.

4.1 System-wide State Support

The state support in FY15 was approximately \$106.0 million (66 percent of system-wide expenditures), which was higher than the FY05 through FY15 average state support of approximately \$98.1 million (66 percent of the average system-wide operating expenditures). A summary of system-wide state support for FY05 through FY15 is included in Table 4-1.

Table 4-1: FY05–FY15 AMHS System-wide Support

Fiscal Year	State Support (\$000)	State Support (% of Expenditure)
2005	54,434	54
2006	83,650	62
2007	94,159	66
2008	94,852	66
2009	93,656	66
2010	93,259	66
2011	110,130	69
2012	116,388	68
2013	118,646	69
2014	114,253	69
2015	106,007	66
Average	98,130	66

Source: AMHS 2016 (see Appendix A).

4.2 Lynn Canal State Support

The state support in Lynn Canal for FY15 was approximately \$19.5 million (78 percent of the state support), which is greater than the FY05 through FY15 average state support of approximately \$12.5 million (66 percent of the average operating expenditures). A summary of state support for service in Lynn Canal for FY05 through FY15 is presented in Table 4-2.

Table 4-2: FY05–FY15 State Support for Lynn Canal Corridor

Fiscal Year	State Support (\$000)	State Support (% of Expenditure)
2005	6,619	49
2006	9,231	58
2007	9,639	63
2008	11,035	63
2009	11,060	65
2010	10,461	63
2011	12,920	69
2012	13,824	68
2013	17,315	75
2014	15,654	76
2015	19,501	78
Average	12,533	66

Source: AMHS 2016 (see Appendix A).

5.0 Inflation Rate

This section discusses the relationship between inflation rates and the AMHS reported system-wide and Lynn Canal revenues, expenditures, and state support for FY05 through FY15 (Sections 2.1-4.2).

The inflation rate in FY13³ was 1.5 percent, which was lower than the FY05 through FY13 average inflation rate of 2.4 percent. In FY15, the percent change for revenues (Lynn Canal - 10.3 percent, system-wide - 5.8 percent), Lynn Canal expenditures (21.1 percent), and Lynn Canal state support (24.6 percent) was greater than the average inflation rate of 2.4 percent. The percent change in 2015 for statewide expenditures (-3.1 percent), and system-wide state support (-7.2 percent) was lower than the average inflation rate. The average percent change for FY05 through FY15 for expenditures (Lynn Canal - 8.6 percent, statewide - 6.0 percent), and state support (Lynn Canal - 15.0 percent, system-wide - 9.2 percent) was greater than the average inflation rate of 2.4 percent, but the average percent change for FY05–FY15 for revenues (Lynn Canal - 1.6 percent, statewide - 2.0 percent) was lower than the average inflation rate. A summary of inflation rates for FY05 through FY15 is included in Table 5-1 and Figure 5-1.

³ Inflation rates for 2015 were not available at the time of this report (U.S. Department of Labor, Bureau of Labor Statistics 2016).

Table 5-1: FY05–FY15 Lynn Canal Corridor and System-wide Revenues, Operating Costs, State Support and Annual Inflation Rate

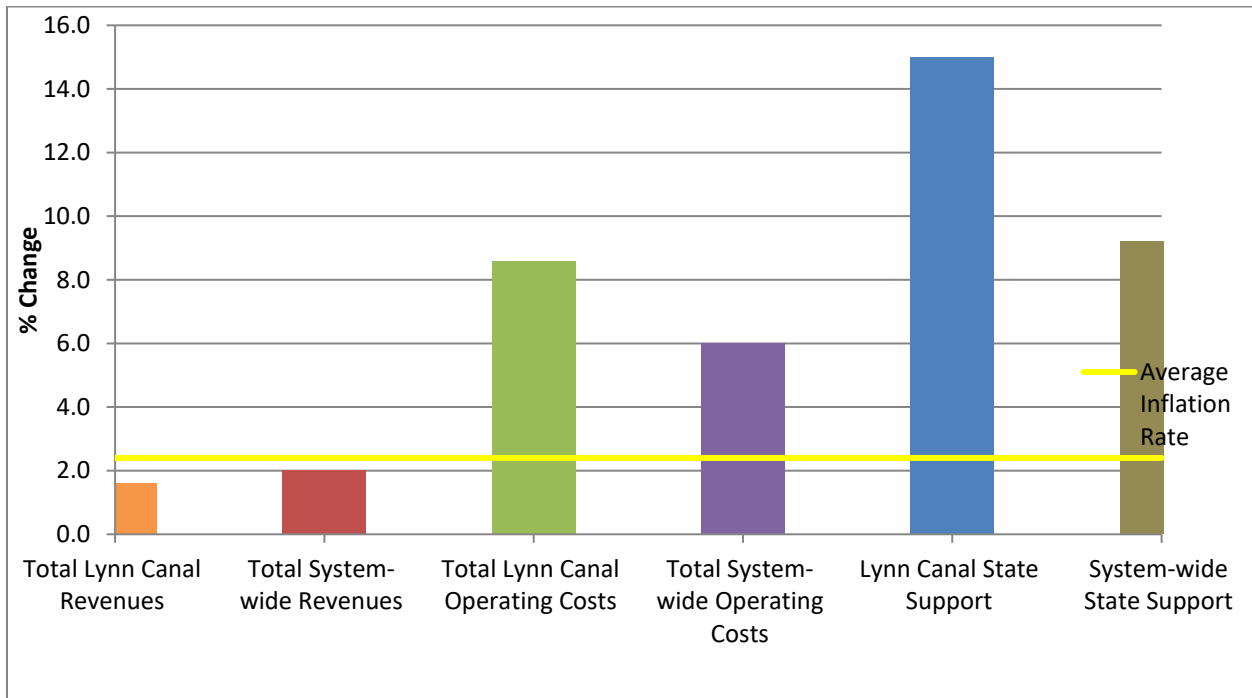
Fiscal Year	% Change						Average Annual Inflation Rate (%) ¹
	Total Lynn Canal Revenues	Total System-wide Revenues	Total Lynn Canal Operating Costs	Total System-wide Operating Costs	Lynn Canal State Support	System-wide State Support	
2005	13.6	4.8	25.6	13.1	40.8	21.4	3.4
2006	-0.5	10.5	19.2	33.7	39.5	53.7	3.2
2007	-15.0	-4.3	-3.8	6.1	4.4	12.6	2.8
2008	11.7	-2.7	13.4	-0.4	14.5	0.7	3.8
2009	-5.4	-0.7	-1.8	-1.1	0.2	-1.3	-0.4
2010	0.9	-1.9	-3.2	-0.9	-5.4	-0.4	1.6
2011	-4.1	3.4	13.3	13.2	23.5	18.1	3.2
2012	11.5	12.5	8.4	7.8	7	5.7	2.1
2013	9.9	-1.4	13.9	0.9	25.3	1.9	1.5
2014	-14.9	-3.9	-11.0	-3.8	-9.6	-3.7	N/A
2015	10.3	5.8	21.1	-3.1	24.6	-7.2	N/A
Average	1.6	2.0	8.6	6.0	15.0	9.2	2.4

Source: AMHS 2016 (see Appendix A); U.S. Department of Labor, Bureau of Labor Statistics. 2016
<http://www.bls.gov/cpi/cpifiles/cpi.ai.txt>

Note: Percent change was calculated based on total dollar amounts for revenues (Table 2-1 and Table 2-2), expenditures (Table 3-1 and Table 3-2), and state support (Table 4-1 and Table 4-2).

¹ Inflation rates for 2014 and 2015 were not available at the time of this report (U.S. Department of Labor, Bureau of Labor Statistics 2016). The average is for 2005-2013.

Figure 5-1: FY05–FY15 Lynn Canal Corridor and System-wide Revenues, Operating Costs, State Support Percent Change and Average Inflation Rate



Source: AMHS 2016 (see Appendix A); U.S. Department of Labor, Bureau of Labor Statistics. 2016
<http://www.bls.gov/cpi/cpifiles/cpi.ai.txt>

Note: Percent change was calculated based on total dollar amounts for revenues (Table 2-1 and Table 2-2), expenditures (Table 3-1 and Table 3-2), and state support (Table 4-1 and Table 4-2). Inflation rates for 2014 and 2015 were not available at the time of this report (U.S. Department of Labor, Bureau of Labor Statistics 2016). The average is for 2005-2013.

6.0 Conclusion

Between FY05 to FY15, AMHS system-wide operating expenditures have risen 59 percent, while revenues have risen by only approximately 17 percent. During the same period, Lynn Canal operating expenditures have risen by nearly 86 percent, but revenues have decreased by approximately 18 percent. This decrease in revenue was due primarily to a decrease in ridership, not fare changes, as can be seen in Appendix A, Table A-3, and Appendix C. As a result, the state support for Lynn Canal has grown from FY05 to FY15 to where it is now approximately 78 percent of total cost, less than for the system as a whole (66 percent).

For FY05 through FY13⁴, the cumulative cost of inflation was approximately 21 percent. During this period, system-wide operating expenditures rose more (nearly 70 percent) than the cost of inflation, while system-wide revenues rose less (approximately 15 percent) than inflation. Similarly, Lynn Canal operating expenditures rose more (nearly 73 percent) than the cost of inflation, and Lynn Canal revenues declined (approximately 13 percent) compared to the inflation rate.

⁴ Inflation rates for 2015 were not available at the time of this report (U.S. Department of Labor, Bureau of Labor Statistics 2016).

This page intentionally left blank.

Appendix A

AMHS Data

Data provided by AMHS to Southcoast Region DOT&PF on 4/5/2016.

Note: Totals may not add up exactly due to rounding.

This page intentionally left blank.

Table A-1: FY01–FY15 AMHS System-wide Summary

Fiscal Year	Oper Expend (\$000)	Revenues (\$000)	State Support (\$000)	State Support (%)
2001	81,742	37,600	44,142	54.0
2002	79,594	39,500	40,094	50.4
2003	85,639	41,200	44,439	51.9
2004	89,540	44,700	44,840	50.1
2005	101,282	46,848	54,434	53.7
2006	135,431	51,781	83,650	61.8
2007	143,721	49,562	94,159	65.5
2008	143,094	48,242	94,852	66.3
2009	141,561	47,905	93,656	66.2
2010	140,261	47,002	93,259	66.5
2011	158,732	48,602	110,130	69.4
2012	171,042	54,654	116,388	68.0
2013	172,527	53,881	118,646	68.8
2014	166,022	51,769	114,253	68.8
2015	160,798	54,791	106,007	65.9

Table A-2: FY01–FY15 AMHS Lynn Canal Corridor Summary

Fiscal Year	Oper Expend (\$000)	Revenues (\$000)	State Support (\$000)	State Support (%)
2001	10,483	5,500	4,983	47.5
2002	11,385	6,400	4,985	43.8
2003	11,497	6,200	5,297	46.1
2004	10,701	6,000	4,701	43.9
2005	13,438	6,819	6,619	49.3
2006	16,016	6,785	9,231	57.6
2007	15,408	5,769	9,639	62.6
2008	17,479	6,444	11,035	63.1
2009	17,157	6,096	11,060	64.5
2010	16,612	6,152	10,461	63.0
2011	18,817	5,897	12,920	68.7
2012	20,401	6,577	13,824	67.8
2013	23,242	5,927	17,315	74.5
2014	20,695	5,041	15,654	75.6
2015	25,061	5,559	19,501	77.8

Table A-3: FY05–FY15 Lynn Canal Revenue by Sales Component (\$000)

Fiscal Year	Passengers	Vehicles	St Rooms	Pass Serv	Total All
2005	3,268	2,678	359	515	6,819
2006	3,146	2,843	357	440	6,785
2007	2,556	2,443	275	496	5,769
2008	2,688	2,834	289	633	6,444
2009	2,461	2,626	235	774	6,096
2010	2,460	2,743	246	702	6,152
2011	2,325	2,593	273	705	5,897
2012	2,523	2,928	287	839	6,577
2013	2,165	2,610	442	710	5,927
2014	1,584	2,431	531	495	5,041
2015	1,756	2,636	592	575	5,559

Table A-4: FY01–FY15 System-wide Management Expenditures (\$000)

Fiscal Year	Vessel Exp	System Mgmt	Total Exp
2001	61,526	12,420	73,946
2002	62,697	10,814	73,511
2003	66,460	11,186	77,646
2004	68,469	11,420	79,889
2005	74,247	11,868	86,115
2006	95,181	14,840	110,021
2007	99,028	16,108	115,136
2008	96,251	16,337	112,588
2009	96,259	17,017	113,276
2010	99,161	17,857	117,018
2011	106,839	18,899	125,738
2012	113,459	19,502	132,961
2013	115,635	20,440	136,075
2014	112,907	20,860	133,767
2015	113,705	20,692	134,397

Table A-5: FY05 Vessel Revenues - Reservations and Management System (RMS3) (\$000)

Vessel	Passengers	Vehicles	St Rooms	Total
Aurora	1,476.4	840.4	0.0	2,316.8
Chenega	0.9	0.7	0.0	1.6
Columbia	3,279.6	3,048.5	1,189.1	7,517.2
Fairweather	1,859.6	1,046.2	0.0	2,905.8
Kennicott	2,130.1	2,553.5	688.2	5,371.8
LeConte	692.1	599.6	0.0	1,291.7
Lituya	172.9	147.5	0.0	320.4
Malaspina	3,898.5	5,643.8	1,797.4	11,339.7
Matanuska	3,078.4	4,122.2	1,115.5	8,316.1
Taku	366.0	285.8	47.6	699.4
Tustumena	1,294.8	1,975.7	432.7	3,703.2
Contract Vessels	4.1	7.6	0.0	11.7
Total Vessel Revenues	18,253.4	20,271.5	5,270.5	43,795.4

Table A-6: FY05 Vessel Revenues - Annual Financial Report (AFR) (\$000)

Vessel	Passengers	Vehicles	St Rooms	Pass Serv	Total
Aurora	1,408.3	801.7	0.0	123.0	2,333.0
Chenega	0.0	0.0	0.0	0.0	0.0
Columbia	2,802.2	2,604.8	1,900.0	610.0	7,917.0
Fairweather	1,824.5	1,026.5	0.0	152.0	3,003.0
Kennicott	1,927.0	2,310.0	1,000.0	425.0	5,662.0
LeConte	660.6	572.4	0.0	151.0	1,384.0
Lituya	320.0	273.0	0.0	0.0	593.0
Malaspina	4,313.9	6,245.1	500.0	932.0	11,991.0
Matanuska	2,967.4	3,973.6	1,150.0	671.0	8,762.0
Taku	325.7	254.3	100.0	80.0	760.0
Tustumena	1,037.3	1,582.7	407.0	154.0	3,181.0
Contract Vessels	4.2	7.8	0.0	0.0	12.0
Total Vessel Revenues	17,591.2	19,651.8	5,057.0	3,298.0	45,598.0
Non Vessel Revenues					64.0
Restricted Revenues					1,186.0
Total System Revenues per Annual Financial Statement (AFS)					46,848.0

Table A-7: FY05 Lynn Canal % of Total Vessel Revenue

Vessel	Passengers	Vehicles	St Rooms	Total
Aurora	0.9	1.6	0.0	1.1
Chenega	0.0	0.0	0.0	0.0
Columbia	10.0	8.7	5.3	8.7
Fairweather	83.2	83.6	0.0	83.4
Kennicott	13.1	11.0	6.8	11.3
LeConte	5.6	5.9	0.0	5.7
Lituya	0.0	0.0	0.0	0.0
Malaspina	10.6	8.7	6.0	8.9
Matanuska	19.6	16.4	12.2	17.0
Taku	39.5	38.3	19.6	37.6
Tustumena	0.0	0.0	0.0	0.0
Contract Vessels	0.0	0.0	0.0	0.0

Table A-8: FY05 Lynn Canal Generated Revenues (\$000)

Vessel	Passengers	Vehicles	St Rooms	Pass Serv	Total
Aurora	12.7	12.8	0.0	1.1	26.6
Chenega	0.0	0.0	0.0	0.0	0.0
Columbia	280.2	226.6	100.7	61.0	668.5
Fairweather	1,518.0	858.1	0.0	126.5	2,502.6
Kennicott	252.4	254.1	68.0	55.7	630.2
LeConte	37.0	33.8	0.0	8.5	79.3
Lituya	0.0	0.0	0.0	0.0	0.0
Malaspina	457.3	543.3	30.0	98.8	1,129.4
Matanuska	581.6	651.7	140.3	131.5	1,505.1
Taku	128.6	97.4	19.6	31.6	277.2
Tustumena	0.0	0.0	0.0	0.0	0.0
Contract Vessels	0.0	0.0	0.0	0.0	0.0
Total Vessel Revenues	3,267.9	2,677.8	358.6	514.6	6,818.9

Table A-9: FY06 Vessel Revenues - RMS3 (\$000)

Vessel	Passengers	Vehicles	St Rooms	Total
Aurora	1,239.4	952.8	0.0	2,192.2
Chenega	605.8	479.4	0.0	1,085.2
Columbia	4,840.2	7,270.7	2,418.3	14,529.2
Fairweather	1,340.9	802.4	0.0	2,143.3
Kennicott	1,961.9	3,110.7	861.1	5,933.7
LeConte	810.4	661.6	0.0	1,472.0
Lituya	315.7	273.4	0.0	589.1
Malaspina	2,960.2	3,154.0	1,140.9	7,255.1
Matanuska	2,689.6	3,292.5	887.7	6,869.8
Taku	1,032.4	1,684.1	316.9	3,033.4
Tustumena	1,002.9	1,363.2	326.2	2,692.3
Contract Vessels	76.0	4.2	0.0	80.2
Total Vessel Revenues	18,875.4	23,049.0	5,951.1	47,875.5

Table A-10: FY06 Vessel Revenues AFR (\$000)

Vessel	Passengers	Vehicles	St Rooms	Pass Serv	Total
Aurora	1,264.7	972.3	0.0	91.0	2,328.0
Chenega	608.5	481.5	0.0	38.0	1,128.0
Columbia	4,873.8	7,321.2	2,319.0	1,022.0	15,536.0
Fairweather	1,358.9	813.1	0.0	85.0	2,257.0
Kennicott	1,859.6	2,948.4	1,056.0	345.0	6,209.0
LeConte	814.3	664.7	0.0	158.0	1,637.0
Lituya	317.8	275.2	0.0	0.0	593.0
Malaspina	3,063.7	3,264.3	1,065.0	437.0	7,830.0
Matanuska	2,675.6	3,275.4	1,012.0	454.0	7,417.0
Taku	1,115.1	1,818.9	130.0	228.0	3,292.0
Tustumena	982.9	1,336.1	404.0	123.0	2,846.0
Contract Vessels	72.0	4.0	0.0	0.0	76.0
Total Vessel Revenues	19,006.9	23,175.1	5,986.0	2,981.0	51,149.0
Non Vessel Revenues					53.0
Restricted Revenues					579.0
Total System Revenues per AFS					51,781.0

Table A-11: FY06 Lynn Canal % of Total Vessel Revenue

Vessel	Passengers	Vehicles	St Rooms	Total
Aurora	0.0	0.0	0.0	0.0
Chenega	10.3	16.3	0.0	12.9
Columbia	9.8	6.7	5.3	7.5
Fairweather	79.2	77.8	0.0	78.7
Kennicott	8.0	4.3	2.6	5.3
LeConte	19.9	23.1	0.0	21.3
Lituya	0.0	0.0	0.0	0.0
Malaspina	9.7	9.3	5.9	8.9
Matanuska	22.6	19.0	12.0	19.5
Taku	28.4	23.9	17.0	24.7
Tustumena	0.0	0.0	0.0	0.0
Contract Vessels	0.0	0.0	0.0	0.0

Table A-12: FY06 Lynn Canal Generated Revenues (\$000)

Vessel	Passengers	Vehicles	St Rooms	Pass Serv	Total
Aurora	0.0	0.0	0.0	0.0	0.0
Chenega	62.7	78.5	0.0	3.9	145.1
Columbia	477.6	490.5	122.9	100.2	1,191.2
Fairweather	1,076.2	632.6	0.0	67.3	1,776.2
Kennicott	148.8	126.8	27.5	27.6	330.6
LeConte	162.0	153.6	0.0	31.4	347.0
Lituya	0.0	0.0	0.0	0.0	0.0
Malaspina	297.2	303.6	62.8	42.4	706.0
Matanuska	604.7	622.3	121.4	102.6	1,451.1
Taku	316.7	434.7	22.1	64.8	838.3
Tustumena	0.0	0.0	0.0	0.0	0.0
Contract Vessels	0.0	0.0	0.0	0.0	0.0
Total Vessel Revenues	3,145.9	2,842.6	356.7	440.2	6,785.4

Table A-13: FY07 Vessel Revenues - RMS3 (\$000)

Vessel	Passengers	Vehicles	St Rooms	Total
Aurora	1,118.6	956.6	0.0	2,075.2
Chenega	1,176.0	923.1	0.0	2,099.1
Columbia	4,123.0	6,270.2	2,149.2	12,542.4
Fairweather	1,747.6	1,285.2	0.0	3,032.8
Kennicott	1,687.5	3,460.6	919.1	6,067.2
LeConte	464.3	436.3	0.0	900.6
Lituya	331.0	325.8	0.0	656.8
Malaspina	3,018.0	3,522.7	1,239.6	7,780.3
Matanuska	2,844.6	4,092.1	1,188.6	8,125.3
Taku	1,051.6	1,411.7	343.7	2,807.0
Tustumena	1,122.3	1,568.2	455.7	3,146.2
Contract Vessels	116.8	23.5	0.0	140.3
Total Vessel Revenues	18,801.3	24,276.0	6,295.9	49,373.2

Table A-14: FY07 Vessel Revenues AFR (\$000)

Vessel	Passengers	Vehicles	St Rooms	Pass Serv	Total
Aurora	1,011.2	864.8	0.0	129.0	2,005.0
Chenega	1,061.7	833.3	0.0	68.0	1,963.0
Columbia	3,693.7	5,617.3	2,072.0	1,055.0	12,438.0
Fairweather	1,578.3	1,160.7	0.0	174.0	2,913.0
Kennicott	1,439.7	2,952.3	1,040.0	399.0	5,831.0
LeConte	419.1	393.9	0.0	103.0	916.0
Lituya	298.8	294.2	0.0	0.0	593.0
Malaspina	2,931.9	3,422.1	620.0	578.0	7,552.0
Matanuska	2,481.8	3,570.2	1,309.0	784.0	8,145.0
Taku	1,019.9	1,369.1	154.0	290.0	2,833.0
Tustumena	984.0	1,375.0	488.0	213.0	3,060.0
Contract Vessels	105.7	21.3	0.0	0.0	127.0
Total Vessel Revenues	17,025.8	21,874.2	5,683.0	3,793.0	48,376.0
Non Vessel Revenues					32.0
Restricted Revenues					1,154.0
Total System Revenues per AFS					49,562.0

Table A-15: FY07 Lynn Canal % of Total Vessel Revenue

Vessel	Passengers	Vehicles	St Rooms	Total
Aurora	0.0	0.0	0.0	0.0
Chenega	0.0	0.0	0.0	0.0
Columbia	10.8	8.2	5.6	8.6
Fairweather	76.2	78.7	0.0	77.3
Kennicott	1.5	1.3	1.4	1.4
LeConte	37.3	48.3	0.0	42.7
Lituya	0.0	0.0	0.0	0.0
Malaspina	10.4	9.5	5.7	9.3
Matanuska	13.6	9.7	7.5	10.8
Taku	13.1	12.3	7.0	12.0
Tustumena	0.0	0.0	0.0	0.0
Contract Vessels	0.0	0.0	0.0	0.0

Table A-16: FY07 Lynn Canal Generated Revenues (\$000)

Vessel	Passengers	Vehicles	St Rooms	Pass Serv	Total
Aurora	0.0	0.0	0.0	0.0	0.0
Chenega	0.0	0.0	0.0	0.0	0.0
Columbia	398.9	460.6	116.0	113.9	1,089.5
Fairweather	1,202.7	913.5	0.0	132.6	2,248.7
Kennicott	21.6	38.4	14.6	6.0	80.5
LeConte	156.3	190.2	0.0	38.4	385.0
Lituya	0.0	0.0	0.0	0.0	0.0
Malaspina	304.9	325.1	35.3	60.1	725.5
Matanuska	337.5	346.3	98.2	106.6	888.6
Taku	133.6	168.4	10.8	38.0	350.8
Tustumena	0.0	0.0	0.0	0.0	0.0
Contract Vessels	0.0	0.0	0.0	0.0	0.0
Total Vessel Revenues	2,555.5	2,442.5	274.9	495.6	5,768.6

Table A-17: FY08 Vessel Revenues - RMS3 (\$000)

Vessel	Passengers	Vehicles	St Rooms	Total
Aurora	800.1	479.8	0.0	1,279.9
Chenega	1,561.8	1,462.3	0.0	3,024.1
Columbia	2,464.1	2,713.7	966.3	6,144.1
Fairweather	1,456.5	1,077.7	0.0	2,534.2
Kennicott	1,002.8	1,844.0	472.2	3,319.0
LeConte	677.2	677.1	0.0	1,354.3
Lituya	392.6	380.9	0.0	773.5
Malaspina	3,425.4	6,002.4	1,705.9	11,133.7
Matanuska	2,975.1	4,255.7	1,208.1	8,438.9
Taku	1,452.1	2,310.1	540.2	4,302.4
Tustumena	1,032.9	1,730.6	418.7	3,182.2
Contract Vessels	0.0	0.0	0.0	0.0
Total Vessel Revenues	17,240.6	22,934.3	5,311.4	45,486.3

Table A-18: FY08 Vessel Revenues AFR (\$000)

Vessel	Passengers	Vehicles	St Rooms	Pass Serv	Total
Aurora	787.0	472.0	0.0	88.0	1,347.0
Chenega	1,534.4	1,436.6	0.0	122.0	3,093.0
Columbia	2,388.5	2,630.5	906.0	538.0	6,463.0
Fairweather	1,400.1	1,035.9	0.0	169.0	2,605.0
Kennicott	976.8	1,796.2	415.0	226.0	3,414.0
LeConte	652.0	652.0	0.0	210.0	1,514.0
Lituya	366.0	355.0	0.0	0.0	721.0
Malaspina	3,247.1	5,689.9	1,697.0	1,025.0	11,659.0
Matanuska	2,834.5	4,054.5	1,139.0	813.0	8,841.0
Taku	1,346.7	2,142.3	508.0	483.0	4,480.0
Tustumena	1,018.9	1,707.1	411.0	239.0	3,376.0
Contract Vessels	0.0	0.0	0.0	0.0	0.0
Total Vessel Revenues	16,551.9	21,972.1	5,076.0	3,913.0	47,513.0
Non Vessel Revenues					135.0
Restricted Revenues					594.0
Total System Revenues per AFS					48,242.0

Table A-19: FY08 Lynn Canal % of Total Vessel Revenue

Vessel	Passengers	Vehicles	St Rooms	Total
Aurora	6.4	13.3	0.0	9.0
Chenega	3.9	4.4	0.0	4.1
Columbia	8.5	8.1	5.0	7.8
Fairweather	60.3	60.6	0.0	60.4
Kennicott	0.0	0.0	0.0	0.0
LeConte	34.5	46.3	0.0	40.4
Lituya	0.0	0.0	0.0	0.0
Malaspina	23.2	14.8	5.4	16.0
Matanuska	16.1	13.5	10.3	13.9
Taku	7.1	8.2	6.8	7.7
Tustumena	0.0	0.0	0.0	0.0
Contract Vessels	0.0	0.0	0.0	0.0

Table A-20: FY08 Lynn Canal Generated Revenues (\$000)

Vessel	Passengers	Vehicles	St Rooms	Pass Serv	Total
Aurora	50.4	62.8	0.0	5.6	118.8
Chenega	59.8	63.2	0.0	4.8	127.8
Columbia	203.0	213.1	45.3	45.7	507.1
Fairweather	844.2	627.8	0.0	101.9	1,573.9
Kennicott	0.0	0.0	0.0	0.0	0.0
LeConte	225.0	301.9	0.0	72.5	599.3
Lituya	0.0	0.0	0.0	0.0	0.0
Malaspina	753.3	842.1	91.6	237.8	1,924.9
Matanuska	456.3	547.4	117.3	130.9	1,251.9
Taku	95.6	175.7	34.5	34.3	340.1
Tustumena	0.0	0.0	0.0	0.0	0.0
Contract Vessels	0.0	0.0	0.0	0.0	0.0
Total Vessel Revenues	2,687.7	2,833.8	288.8	633.5	6,443.8

Table A-21: FY09 Vessel Revenues - RMS3 (\$000)

Vessel	Passengers	Vehicles	St Rooms	Total
Aurora	1,062.4	1,011.6	0.0	2,074.0
Chenega	1,680.8	1,606.4	0.0	3,287.2
Columbia	3,571.0	4,443.7	1,406.4	9,421.1
Fairweather	626.7	442.5	0.0	1,069.2
Kennicott	1,402.7	2,932.5	700.7	5,035.9
LeConte	792.2	821.6	0.0	1,613.8
Lituya	348.1	353.2	0.0	701.3
Malaspina	3,258.4	6,089.8	1,482.0	10,830.2
Matanuska	1,266.8	1,302.6	459.4	3,028.8
Taku	1,753.4	2,644.1	664.6	5,062.1
Tustumena	923.8	1,531.8	363.2	2,818.8
Contract Vessels	0.0	2.5	0.0	2.5
Total Vessel Revenues	16,686.3	23,182.3	5,076.3	44,944.9

Table A-22: FY09 Vessel Revenues AFR (\$000)

Vessel	Passengers	Vehicles	St Rooms	Pass Serv	Total
Aurora	1,039.3	989.7	0.0	162.0	2,191.0
Chenega	1,654.1	1,580.9	0.0	145.0	3,380.0
Columbia	3,417.9	4,253.1	1,252.0	790.0	9,713.0
Fairweather	547.5	386.5	0.0	81.0	1,015.0
Kennicott	1,344.7	2,811.3	628.0	398.0	5,182.0
LeConte	752.0	780.0	0.0	276.0	1,808.0
Lituya	317.2	321.8	0.0	0.0	639.0
Malaspina	2,970.4	5,551.6	1,390.0	1,068.0	10,980.0
Matanuska	1,131.0	1,163.0	453.0	347.0	3,094.0
Taku	1,561.4	2,354.6	623.0	617.0	5,156.0
Tustumena	920.2	1,525.8	341.0	205.0	2,992.0
Contract Vessels	0.0	2.0	0.0	0.0	2.0
Total Vessel Revenues	15,655.8	21,720.2	4,687.0	4,089.0	46,152.0
Non Vessel Revenues					48.0
Restricted Revenues					1,705.0
Total System Revenues per AFS					47,905.0

Table A-23: FY09 Lynn Canal % of Total Vessel Revenue

Vessel	Passengers	Vehicles	St Rooms	Total
Aurora	0.0	0.0	0.0	0.0
Chenega	7.4	9.7	0.0	8.5
Columbia	8.1	7.7	5.3	7.5
Fairweather	32.3	34.4	0.0	33.2
Kennicott	3.7	1.8	1.8	2.3
LeConte	37.0	45.2	0.0	41.2
Lituya	0.0	0.0	0.0	0.0
Malaspina	42.7	22.2	5.1	26.0
Matanuska	13.9	14.6	11.2	13.8
Taku	8.4	8.8	5.8	8.3
Tustumena	0.0	0.0	0.0	0.0
Contract Vessels	0.0	0.0	0.0	0.0

Table A-24: FY09 Lynn Canal Generated Revenues (\$000)

Vessel	Passengers	Vehicles	St Rooms	Pass Serv	Total
Aurora	0.0	0.0	0.0	0.0	0.0
Chenega	122.4	153.3	0.0	10.7	286.5
Columbia	276.8	327.5	66.4	64.0	734.7
Fairweather	176.8	133.0	0.0	26.2	336.0
Kennicott	49.8	50.6	11.3	14.7	126.4
LeConte	278.3	352.5	0.0	102.1	732.9
Lituya	0.0	0.0	0.0	0.0	0.0
Malaspina	1,268.4	1,232.5	70.9	456.0	3,027.7
Matanuska	157.2	169.8	50.7	48.2	426.0
Taku	131.2	207.2	36.1	51.8	426.3
Tustumena	0.0	0.0	0.0	0.0	0.0
Contract Vessels	0.0	0.0	0.0	0.0	0.0
Total Vessel Revenues	2,460.9	2,626.4	235.4	773.7	6,096.5

Table A-25: FY10 Vessel Revenues - RMS3 (\$000)

Vessel	Passengers	Vehicles	St Rooms	Total
Aurora	1,428.2	1,642.9	0.0	3,071.1
Chenega	738.4	673.4	0.0	1,411.8
Columbia	2,993.1	3,433.4	1,154.2	7,580.7
Fairweather	1,051.5	881.7	0.0	1,933.2
Kennicott	893.7	1,837.7	412.4	3,143.8
LeConte	772.2	817.1	0.0	1,589.3
Lituya	313.3	338.2	0.0	651.5
Malaspina	3,228.9	6,240.3	1,590.6	11,059.8
Matanuska	2,139.9	2,950.9	913.4	6,004.2
Taku	1,506.4	2,361.2	582.0	4,449.6
Tustumena	1,023.4	1,947.5	474.5	3,445.4
Contract Vessels	45.7	10.8	0.0	56.5
Total Vessel Revenues	16,134.7	23,135.1	5,127.1	44,396.9

Table A-26: FY10 Vessel Revenues AFR (\$000)

Vessel	Passengers	Vehicles	St Rooms	Pass Serv	Total
Aurora	1,359.3	1,563.7	0.0	192.0	3,115.0
Chenega	702.4	640.6	0.0	49.0	1,392.0
Columbia	2,848.5	3,267.5	1,126.0	682.0	7,924.0
Fairweather	1,000.3	838.7	0.0	106.0	1,945.0
Kennicott	850.4	1,748.6	330.0	196.0	3,125.0
LeConte	734.6	777.4	0.0	245.0	1,757.0
Lituya	298.2	321.8	0.0	0.0	620.0
Malaspina	3,072.7	5,938.3	1,433.0	1,002.0	11,446.0
Matanuska	2,036.2	2,807.8	799.0	568.0	6,211.0
Taku	1,432.9	2,246.1	550.0	526.0	4,755.0
Tustumena	973.8	1,853.2	454.0	244.0	3,525.0
Contract Vessels	43.7	10.3	0.0	0.0	54.0
Total Vessel Revenues	15,352.9	22,014.1	4,692.0	3,810.0	45,869.0
Non Vessel Revenues					45.0
Restricted Revenues					1,088.0
Total System Revenues per AFS					47,002.0

Table A-27: FY10 Lynn Canal % of Total Vessel Revenue

Vessel	Passengers	Vehicles	St Rooms	Total
Aurora	0.0	0.0	0.0	0.0
Chenega	0.0	0.0	0.0	0.0
Columbia	7.4	7.0	5.0	6.8
Fairweather	34.5	34.9	0.0	34.7
Kennicott	0.0	0.0	0.0	0.0
LeConte	44.6	53.5	0.0	49.2
Lituya	0.0	0.0	0.0	0.0
Malaspina	40.2	22.3	6.9	25.4
Matanuska	12.4	11.8	8.2	11.5
Taku	6.2	6.7	4.6	6.2
Tustumena	0.0	0.0	0.0	0.0
Contract Vessels	0.0	0.0	0.0	0.0

Table A-28: FY10 Lynn Canal Generated Revenues (\$000)

Vessel	Passengers	Vehicles	St Rooms	Pass Serv	Total
Aurora	0.0	0.0	0.0	0.0	0.0
Chenega	0.0	0.0	0.0	0.0	0.0
Columbia	210.8	228.7	56.3	50.5	546.3
Fairweather	345.1	292.7	0.0	36.6	674.4
Kennicott	0.0	0.0	0.0	0.0	0.0
LeConte	327.7	415.9	0.0	109.3	852.8
Lituya	0.0	0.0	0.0	0.0	0.0
Malaspina	1,235.2	1,324.3	98.9	402.8	3,061.1
Matanuska	252.5	331.3	65.5	70.4	719.8
Taku	88.8	150.5	25.3	32.6	297.2
Tustumena	0.0	0.0	0.0	0.0	0.0
Contract Vessels	0.0	0.0	0.0	0.0	0.0
Total Vessel Revenues	2,460.1	2,743.4	246.0	702.2	6,151.6

Table A-29: FY11 Vessel Revenues - RMS3 (\$000)

Vessel	Passengers	Vehicles	St Rooms	Total
Aurora	1,341.6	1,127.9	0.0	2,469.5
Chenega	1,642.7	1,966.5	0.0	3,609.2
Columbia	3,447.9	4,171.0	1,358.8	8,977.7
Fairweather	992.9	841.3	0.0	1,834.2
Kennicott	2,085.1	3,995.1	1,049.2	7,129.4
LeConte	368.9	379.7	0.0	748.6
Lituya	394.5	397.8	0.0	792.3
Malaspina	3,064.6	5,881.8	1,423.0	10,369.4
Matanuska	2,144.7	2,838.3	859.3	5,842.3
Taku	859.0	1,062.3	280.7	2,202.0
Tustumena	1,052.8	1,799.5	469.7	3,322.0
Contract Vessels	37.5	4.5	0.0	42.0
Total Vessel Revenues	17,432.2	24,465.7	5,440.7	47,338.6

Table A-30: FY11 Vessel Revenues AFR (\$000)

Vessel	Passengers	Vehicles	St Rooms	Pass Serv	Total
Aurora	1,233.1	1,036.7	0.0	252.2	2,522.0
Chenega	1,507.2	1,804.2	0.0	116.6	3,428.0
Columbia	3,154.4	3,815.9	1,242.5	726.2	8,939.0
Fairweather	909.0	770.3	0.0	125.7	1,805.0
Kennicott	1,915.5	3,670.1	997.8	570.6	7,154.0
LeConte	339.8	349.8	0.0	104.4	794.0
Lituya	360.5	363.5	0.0	0.0	724.0
Malaspina	2,773.1	5,322.2	1,428.7	996.0	10,520.0
Matanuska	1,955.8	2,588.2	866.4	689.6	6,100.0
Taku	779.4	963.9	273.7	248.0	2,265.0
Tustumena	957.7	1,637.0	470.2	253.1	3,318.0
Contract Vessels	33.9	4.1	0.0	0.0	38.0
Total Vessel Revenues	15,919.4	22,325.9	5,279.3	4082.4	47,607.0
Non Vessel Revenues					90.0
Restricted Revenues					905.0
Total System Revenues per AFS					48,602.0

Table A-31: FY11 Lynn Canal % of Total Vessel Revenue

Vessel	Passengers	Vehicles	St Rooms	Total
Aurora	14.9	22.3	0.0	18.3
Chenega	0.0	0.0	0.0	0.0
Columbia	7.6	7.5	5.3	7.2
Fairweather	30.5	32.4	0.0	31.4
Kennicott	4.0	3.4	2.8	3.5
LeConte	20.6	26.5	0.0	23.5
Lituya	0.0	0.0	0.0	0.0
Malaspina	45.1	25.0	7.5	28.5
Matanuska	11.5	10.6	8.3	10.6
Taku	0.3	0.4	0.2	0.3
Tustumena	0.0	0.0	0.0	0.0
Contract Vessels	0.0	0.0	0.0	0.0

Table A-32: FY11 Lynn Canal Generated Revenues (\$000)

Vessel	Passengers	Vehicles	St Rooms	Pass Serv	Total
Aurora	183.7	231.2	0.0	37.6	452.5
Chenega	0.0	0.0	0.0	0.0	0.0
Columbia	239.7	286.2	65.9	55.2	647.0
Fairweather	277.3	249.6	0.0	38.3	565.2
Kennicott	76.6	124.8	27.9	22.8	252.2
LeConte	70.0	92.7	0.0	21.5	184.2
Lituya	0.0	0.0	0.0	0.0	0.0
Malaspina	1,250.6	1,330.6	107.2	449.2	3,137.6
Matanuska	224.9	274.4	71.9	79.3	650.5
Taku	2.3	3.9	0.5	0.7	7.5
Tustumena	0.0	0.0	0.0	0.0	0.0
Contract Vessels	0.0	0.0	0.0	0.0	0.0
Total Vessel Revenues	2,325.2	2,593.2	273.4	704.7	5,896.5

Table A-33: FY12 Vessel Revenues - RMS3 (\$000)

Vessel	Passengers	Vehicles	St Rooms	Total
Aurora	1,037.5	782.9	0.0	1,820.4
Chenega	1,329.2	1,516.5	0.0	2,845.7
Columbia	4,229.4	6,017.6	1,917.8	12,164.8
Fairweather	790.1	789.5	0.0	1,579.6
Kennicott	2,372.3	4,202.0	1,143.1	7,717.4
LeConte	990.6	1,169.0	0.0	2,159.6
Lituya	433.0	406.4	0.0	839.4
Malaspina	1,861.9	2,884.2	533.8	5,279.9
Matanuska	2,466.1	4,579.0	1,308.9	8,354.0
Taku	1,235.9	1,831.1	509.5	3,576.5
Tustumena	1,099.4	1,924.0	522.5	3,545.9
Contract Vessels	9.4	2.4	0.0	11.8
Total Vessel Revenues	17,854.8	26,104.6	5,935.6	49,895.0

Table A-34: FY12 Vessel Revenues AFR (\$000)

Vessel	Passengers	Vehicles	St Rooms	Pass Serv	Total
Aurora	1,015.6	766.4	0.0	116.0	1,898.0
Chenega	1,301.2	1,484.5	0.0	103.3	2,889.0
Columbia	4,140.9	5,891.6	1,877.5	1,104.0	13,014.0
Fairweather	773.3	772.7	0.0	113.0	1,659.0
Kennicott	2,322.5	4,113.7	1,119.1	595.7	8,151.0
LeConte	970.1	1,144.8	0.0	422.1	2,537.0
Lituya	424.0	398.0	0.0	0.0	822.0
Malaspina	1,822.9	2,823.8	522.6	595.7	5,765.0
Matanuska	2,414.3	4,482.7	1,281.4	824.6	9,003.0
Taku	1,210.1	1,792.9	498.8	499.2	4,001.0
Tustumena	1,076.3	1,883.7	511.5	283.5	3,755.0
Contract Vessels	9.6	2.4	0.0	0.0	12.0
Total Vessel Revenues	17,480.7	25,557.3	5,810.9	4,657.1	53,506.0
Non Vessel Revenues					180.0
Restricted Revenues					968.0
Total System Revenues per AFS					54,654.0

Table A-35: FY12 Lynn Canal % of Total Vessel Revenue

Vessel	Passengers	Vehicles	St Rooms	Total
Aurora	0.0	0.0	0.0	0.0
Chenega	0.0	0.0	0.0	0.0
Columbia	8.2	7.9	5.8	7.7
Fairweather	13.0	7.6	0.0	10.3
Kennicott	0.0	0.0	0.0	0.0
LeConte	46.2	54.4	0.0	49.0
Lituya	0.0	0.0	0.0	0.0
Malaspina	73.9	48.6	15.2	54.3
Matanuska	11.8	9.0	7.7	9.6
Taku	0.2	0.3	0.1	0.2
Tustumena	0.0	0.0	0.0	0.0
Contract Vessels	0.0	0.0	0.0	0.0

Table A-36: FY12 Lynn Canal Generated Revenues (\$000)

Vessel	Passengers	Vehicles	St Rooms	Pass Serv	Total
Aurora	0.0	0.0	0.0	0.0	0.0
Chenega	0.0	0.0	0.0	0.0	0.0
Columbia	339.6	465.4	108.9	90.5	1,004.4
Fairweather	100.5	58.7	0.0	14.7	173.9
Kennicott	0.0	0.0	0.0	0.0	0.0
LeConte	448.2	622.8	0.0	195.0	1,266.0
Lituya	0.0	0.0	0.0	0.0	0.0
Malaspina	1,347.1	1,372.4	79.4	440.2	3,239.1
Matanuska	284.9	403.4	98.7	97.3	884.3
Taku	2.4	5.4	0.5	1.0	9.3
Tustumena	0.0	0.0	0.0	0.0	0.0
Contract Vessels	0.0	0.0	0.0	0.0	0.0
Total Vessel Revenues	2,522.7	2,928.1	287.5	838.8	6,577.1

Table A-37: FY13 Vessel Revenues - RMS3 (\$000)

Vessel	Passengers	Vehicles	St Rooms	Total
Aurora	1,325.1	1,234.5	0.0	2,559.6
Chenega	1,024.0	1,183.7	0.0	2,207.7
Columbia	4,762.4	8,371.4	2,578.3	15,712.1
Fairweather	760.6	686.8	0.0	1,447.4
Kennicott	2,502.6	4,932.8	1,308.0	8,743.4
LeConte	806.8	925.9	2.7	1,735.4
Lituya	413.0	381.2	3.2	797.4
Malaspina	1,385.1	1,318.6	99.6	2,803.3
Matanuska	2,454.7	4,794.1	1,353.7	8,602.5
Taku	1,191.5	1,771.0	497.3	3,459.8
Tustumena	592.4	929.0	250.3	1,771.7
Contract Vessels	1.0	1.9	0.0	2.9
Total Vessel Revenues	17,219.2	26,530.9	6,093.1	49,843.2

Table A-38: FY13 Vessel Revenues AFR (\$000)

Vessel	Passengers	Vehicles	St Rooms	Pass Serv	Total
Aurora	1,278.9	1,191.5	0.0	208.8	2,679.2
Chenega	989.4	1,143.8	0.0	88.2	2,221.4
Columbia	4,586.1	8,061.5	2,597.3	1,389.2	16,634.1
Fairweather	738.6	667.0	0.0	131.5	1,537.1
Kennicott	2,411.2	4,752.7	1,316.6	714.4	9,194.9
LeConte	601.4	690.2	0.0	315.8	1,607.4
Lituya	402.6	371.6	0.0	0.0	774.2
Malaspina	1,343.7	1,279.1	99.8	410.3	3,132.9
Matanuska	2,356.3	4,602.0	1,370.1	887.2	9,215.6
Taku	1,146.9	1,704.7	500.7	486.9	3,839.2
Tustumena	569.5	893.0	251.6	160.6	1,874.7
Contract Vessels	0.8	1.5	0.0	0.0	2.3
Total Vessel Revenues	16,425.5	25,358.5	6,136.1	4,792.9	52,713.0
Non Vessel Revenues					121.3
Restricted Revenues					1,047.0
Total System Revenues per AFS					53,881.3

Table A-39: FY13 Lynn Canal % of Total Vessel Revenue

Vessel	Passengers	Vehicles	St Rooms	Total
Aurora	0.0	0.0	0.0	0.0
Chenega	0.0	0.0	0.0	0.0
Columbia	8.1	8.1	8.1	8.1
Fairweather	7.1	7.1	7.1	7.1
Kennicott	0.0	0.0	0.0	0.0
LeConte	28.3	28.3	28.3	28.3
Lituya	0.0	0.0	0.0	0.0
Malaspina	99.3	99.3	99.3	99.3
Matanuska	8.4	8.4	8.4	8.4
Taku	3.4	3.4	3.4	3.4
Tustumena	0.0	0.0	0.0	0.0
Contract Vessels	0.0	0.0	0.0	0.0

Table A-40: FY13 Lynn Canal Generated Revenues (\$000)

Vessel	Passengers	Vehicles	St Rooms	Pass Serv	Total
Aurora	0.0	0.0	0.0	0.0	0.0
Chenega	0.0	0.0	0.0	0.0	0.0
Columbia	371.5	653.0	210.4	112.5	1,347.4
Fairweather	52.4	47.4	0.0	9.3	109.1
Kennicott	0.0	0.0	0.0	0.0	0.0
LeConte	170.2	195.3	0.0	89.4	454.9
Lituya	0.0	0.0	0.0	0.0	0.0
Malaspina	1,334.2	1,270.2	99.1	407.4	3,111.0
Matanuska	197.9	386.6	115.1	74.5	774.1
Taku	39.0	58.0	17.0	16.6	130.5
Tustumena	0.0	0.0	0.0	0.0	0.0
Contract Vessels	0.0	0.0	0.0	0.0	0.0
Total Vessel Revenues	2,165.3	2,610.4	441.6	709.7	5,927.0

Table A-41: FY14 Vessel Revenues - RMS3 (\$000)

Vessel	Passengers	Vehicles	St Rooms	Total
Aurora	1,230.1	1,057.5	0.4	2,288.0
Chenega	1,119.9	1,188.6	0.0	2,308.5
Columbia	2,349.9	2,901.6	954.3	6,205.8
Fairweather	732.0	589.6	0.0	1,321.6
Kennicott	2,392.7	4,407.7	1,115.1	7,915.5
LeConte	1,041.6	1,170.0	0.6	2,212.2
Lituya	395.3	383.6	1.0	779.9
Malaspina	3,328.5	6,253.2	1,603.4	11,185.1
Matanuska	2,182.0	3,421.7	922.5	6,526.2
Taku	1,477.8	2,283.5	481.6	4,242.9
Tustumena	576.8	1,162.2	262.4	2,001.4
Contract Vessels	0.0	0.3	0.0	0.3
Total Vessel Revenues	16,826.6	24,819.5	5,341.3	46,987.4

Table A-42: FY14 Vessel Revenues AFR (\$000)

Vessel	Passengers	Vehicles	St Rooms	Pass Serv	Total
Aurora	1,207.2	1,037.8	0.5	175.2	2,420.7
Chenega	1,103.6	1,171.3	0.0	83.6	2,358.5
Columbia	2,309.2	2,851.3	954.3	567.4	6,682.2
Fairweather	721.3	580.9	0.0	113.2	1,415.4
Kennicott	2,352.0	4,332.6	1,115.1	625.2	8,424.9
LeConte	1,026.7	1,153.3	0.0	318.9	2,498.9
Lituya	390.0	378.5	0.0	0.0	768.5
Malaspina	3,271.7	6,146.4	1,603.5	1,029.7	12,051.3
Matanuska	2,144.8	3,363.4	922.5	723.2	7,153.9
Taku	1,453.4	2,245.9	481.6	608.2	4,789.1
Tustumena	567.1	1,142.6	262.4	133.7	2,105.8
Contract Vessels	0.0	0.3	0.0	0.0	0.3
Total Vessel Revenues	16,546.9	24,404.4	5,339.9	4,378.3	50,669.5
Non Vessel Revenues					207.9
Restricted Revenues					892.0
Total System Revenues per AFS					51,769.4

Table A-43: FY14 Lynn Canal % of Total Vessel Revenue

Vessel	Passengers	Vehicles	St Rooms	Total
Aurora	0.8	0.8	0.8	0.8
Chenega	0.0	0.0	0.0	0.0
Columbia	7.6	7.6	7.6	7.6
Fairweather	7.8	7.8	7.8	7.8
Kennicott	0.0	0.0	0.0	0.0
LeConte	32.6	32.6	32.6	32.6
Lituya	0.0	0.0	0.0	0.0
Malaspina	20.4	20.4	20.4	20.4
Matanuska	8.7	8.7	8.7	8.7
Taku	10.6	10.6	10.6	10.6
Tustumena	0.0	0.0	0.0	0.0
Contract Vessels	0.0	0.0	0.0	0.0

Table A-44: FY14 Lynn Canal Generated Revenues (\$000)

Vessel	Passengers	Vehicles	St Rooms	Pass Serv	Total
Aurora	9.7	8.3	0.0	1.4	19.4
Chenega	0.0	0.0	0.0	0.0	0.0
Columbia	175.5	216.7	72.5	43.1	507.8
Fairweather	56.3	45.3	0.0	8.8	110.4
Kennicott	0.0	0.0	0.0	0.0	0.0
LeConte	334.7	376.0	0.0	104.0	814.6
Lituya	0.0	0.0	0.0	0.0	0.0
Malaspina	667.4	1,253.9	327.1	210.1	2,458.5
Matanuska	186.6	292.6	80.3	62.9	622.4
Taku	154.1	238.1	51.0	64.5	507.6
Tustumena	0.0	0.0	0.0	0.0	0.0
Contract Vessels	0.0	0.0	0.0	0.0	0.0
Total Vessel Revenues	1,584.2	2,430.8	531.0	494.8	5,040.8

Table A-45: FY15 Vessel Revenues - RMS3 (\$000)

Vessel	Passengers	Vehicles	St Rooms	Total
Aurora	1,939.9	1,693.0	0.3	3,633.2
Chenega	1,051.2	829.7	0.0	1,880.9
Columbia	4,030.1	5,288.7	1,688.5	11,007.3
Fairweather	746.3	886.2	0.3	1,632.8
Kennicott	2,401.3	4,190.5	1,147.3	7,739.1
LeConte	404.1	349.2	0.0	753.3
Lituya	478.6	389.3	2.0	869.9
Malaspina	2,754.3	5,928.2	1,435.3	10,117.8
Matanuska	1,463.8	1,689.6	508.7	3,662.1
Taku	1,699.8	2,368.3	523.1	4,591.2
Tustumena	1,212.9	1,923.8	480.5	3,617.2
Total Vessel Revenues	18,182.3	25,536.5	5,786.0	49,504.8

Table A-46: FY15 Vessel Revenues AFR (\$000)

Vessel	Passengers	Vehicles	St Rooms	Pass Serv	Total
Aurora	1,891.7	1,650.9	0.0	515.9	4,058.5
Chenega	1,025.0	809.0	0.0	79.8	1,913.8
Columbia	3,911.7	5,133.3	1,688.5	1,044.4	11,777.9
Fairweather	727.9	864.3	0.0	92.1	1,684.3
Kennicott	2,331.4	4,068.5	1,147.3	718.2	8,265.4
LeConte	394.0	340.5	0.0	119.2	853.7
Lituya	467.7	380.5	0.0	0.0	848.2
Malaspina	2,674.4	5,756.3	1,435.3	1,169.8	11,035.8
Matanuska	1,421.5	1,640.7	508.7	417.6	3,988.5
Taku	1,652.0	2,301.8	523.1	997.0	5,473.9
Tustumena	1,178.1	1,868.6	480.5	301.2	3,828.4
Total Vessel Revenues	17,675.4	24,814.4	5,783.4	5,455.2	53,728.4
Non Vessel Revenues					167.0
Restricted Revenues					896.0
Total System Revenues per AFS					54,791.4

Table A-47: FY15 Lynn Canal % of Total Vessel Revenue

Vessel	Passengers	Vehicles	St Rooms	Total
Aurora	21.7	21.7	21.7	21.7
Chenega	0.0	0.0	0.0	0.0
Columbia	8.0	8.0	8.0	8.0
Fairweather	1.5	1.5	1.5	1.5
Kennicott	0.0	0.0	0.0	0.0
LeConte	10.3	10.3	10.3	10.3
Lituya	0.0	0.0	0.0	0.0
Malaspina	23.9	23.9	23.9	23.9
Matanuska	9.9	9.9	9.9	9.9
Taku	12.2	12.2	12.2	12.2
Tustumena	0.0	0.0	0.0	0.0
Contract Vessels	0.0	0.0	0.0	0.0

Table A-48: FY15 Lynn Canal Generated Revenues (\$000)

Vessel	Passengers	Vehicles	St Rooms	Pass Serv	Total
Aurora	410.5	358.2	0.0	112.0	880.7
Chenega	0.0	0.0	0.0	0.0	0.0
Columbia	312.9	410.7	135.1	6.4	865.1
Fairweather	10.9	13.0	0.0	1.4	25.3
Kennicott	0.0	0.0	0.0	0.0	0.0
LeConte	40.6	35.1	-	12.3	87.9
Lituya	0.0	0.0	0.0	0.0	0.0
Malaspina	639.2	1,375.8	343.0	279.6	2,637.6
Matanuska	140.7	162.4	50.4	41.3	394.9
Taku	201.5	280.8	63.8	121.6	667.8
Tustumena	0.0	0.0	0.0	0.0	0.0
Total Vessel Revenues	1,756.4	2,635.9	592.3	574.6	5,559.2

Table A-49: FY05 Vessel Days

Vessel	Total	Lynn Canal	LC %
Aurora	166.8	1.8	1.1
Chenega	0.3	0.0	0.0
Columbia	134.3	15.4	11.4
Fairweather	250.1	165.4	66.1
Kennicott	204.2	20.6	10.1
LeConte	258.5	5.4	2.1
Lituya	74.5	0.0	0.0
Malaspina	334.4	36.5	10.9
Matanuska	334.7	56.8	17.0
Taku	97.6	12.9	13.3
Tustumena	326.4	0.0	0.0
Contract Vessels	21.5	0.0	0.0
Total Vessel Days	2,203.3	314.8	14.3

Table A-50: FY05 Vessel Miles

Vessel	Total	Lynn Canal	LC %
Aurora	34,291.0	256.0	0.7
Chenega	10,747.0	0.0	0.0
Columbia	46,190.0	1,987.0	4.3
Fairweather	71,298.0	27,294.0	38.3
Kennicott	54,566.0	2,457.0	4.5
LeConte	66,732.0	917.0	1.4
Lituya	2,224.0	0.0	0.0
Malaspina	101,097.0	4,700.0	4.6
Matanuska	89,794.0	7,131.0	7.9
Taku	24,941.0	1,627.0	6.5
Tustumena	70,939.0	0.0	0.0
Contract Vessels	4,938.0	0.0	0.0
Total Vessel Miles	577,757.0	46,369.0	8.0

Table A-51: FY05 Expenditures

Vessel	Total Non-Fuel Operating Expenses			Total Fuel Expenses			Total System Oper. Exp. (\$000)
	Total (\$000)	NLC %	NLC (\$000)	Total (\$000)	NLC %	NLC (\$000)	
Aurora	4,098.3	1.1	44.7	857.7	0.7	6.4	4,956.0
Chenega	415.7	0.0	0.0	8.3	0.0	0.0	424.0
Columbia	8,250.4	11.4	943.1	1,657.6	4.3	71.3	9,908.0
Fairweather	5,991.4	66.1	3,962.9	1,618.6	38.3	619.6	7,610.0

Vessel	Total Non-Fuel Operating Expenses			Total Fuel Expenses			Total System Oper. Exp. (\$000)
	Total (\$000)	NLC %	NLC (\$000)	Total (\$000)	NLC %	NLC (\$000)	
Kennicott	10,500.4	10.1	1,059.8	2,376.6	4.5	107.0	12,877.0
LeConte	6,497.0	2.1	136.5	1,429.0	1.4	19.6	7,926.0
Lituya	760.0	0.0	0.0	90.0	0.0	0.0	850.0
Malaspina	12,828.1	10.9	1,398.7	2,691.9	4.6	125.1	15,520.0
Matanuska	12,689.3	17.0	2,152.5	2,439.7	7.9	193.8	15,129.0
Taku	4,850.2	13.3	642.8	696.8	6.5	45.5	5,547.0
Tustumena	7,366.2	0.0	0.0	1,300.8	0.0	0.0	8,667.0
Contract Vessels	0.0	0.0	0.0	0.0	0.0	0.0	0.0
Subtotal Direct	74,247.1	13.9	10,340.9	15,166.9	7.8	1,188.3	89,414.0
Shoreside Costs							
Support Services	2,830.0	13.9	394.2				
Marine Engineering	1,283.0	13.9	178.7				
Operations Management	1,584.0	13.9	220.6				
Reservations/ Marketing	1,726.0	15.0	258.1				
Shore Operations	4,445.0	19.3	856.7				
Subtotal Shoreside Costs	11,868.0	16.1	1,908.3				
Total System Operating Costs	101,282.0	13.3	13,437.5				

Table A-52: FY05 Reservations & Marketing

	Total (\$000)	LC Sales (\$000)	LC %
Sales	45,598.0	6,818.9	15.0

Table A-53: FY05 Lynn Canal Terminal Cost

Port	Total (\$000)	LC %	LC (\$000)
Auke Bay	448.7	53.6	240.4
Haines	459.9	79.1	364.0
Skagway	313.4	80.5	252.3
Subtotal	1,222.0	70.1	856.7

Table A-54: FY05 Lynn Canal Passengers On/Off

Port	Auke Bay	Haines	Skagway	Other	Total
Auke Bay	0	19,632	14,323	29,423	63,378
Haines	19,105	0	6,688	6,796	32,589
Skagway	14,758	5,456	0	4,894	25,108
Subtotal	33,863	25,088	21,011	41,113	121,075

Table A-55: FY06 Vessel Days

Vessel	Total	Lynn Canal	LC %
Aurora	315.7	0.0	0.0
Chenega	208.9	32.3	15.5
Columbia	306.4	35.1	11.5
Fairweather	207.3	115.2	55.6
Kennicott	319.9	11.4	3.6
LeConte	304.8	28.5	9.3
Lituya	365.0	0.0	0.0
Malaspina	190.4	21.1	11.1
Matanuska	258.2	50.6	19.6
Taku	226.5	39.8	17.6
Tustumena	219.0	0.0	0.0
Contract Vessels	66.2	0.0	0.0
Total Vessel Days	2,988.2	334.0	11.2

Table A-56: FY06 Vessel Miles

Vessel	Total	Lynn Canal	LC %
Aurora	84,371.0	0.0	0.0
Chenega	71,185.0	2,962.0	4.2
Columbia	88,774.0	4,042.0	4.6
Fairweather	63,239.0	24,693.0	39.0
Kennicott	72,569.0	1,316.0	1.8
LeConte	84,852.0	3,578.0	4.2
Lituya	15,328.0	0.0	0.0
Malaspina	52,818.0	2,444.0	4.6
Matanuska	69,619.0	6,379.0	9.2
Taku	62,037.0	5,021.0	8.1
Tustumena	45,785.0	0.0	0.0
Contract Vessels	14,384.0	0.0	0.0
Total Vessel Miles	724,961.0	50,435.0	7.0

Table A-57: FY06 Expenditures

Vessel	Total Non-Fuel Operating Expenses			Total Fuel Expenses			Total System Operating Expenses (\$000)
	Total (\$000)	NLC %	NLC (\$000)	Total (\$000)	NLC %	NLC (\$000)	
Aurora	5,793.0	0.0	0.0	2,080.0	0.0	0.0	7,873.0
Chenega	6,901.7	15.5	1,068.0	2,450.3	4.2	102.0	9,352.0

Vessel	Total Non-Fuel Operating Expenses			Total Fuel Expenses			Total System Operating Expenses (\$000)
	Total (\$000)	NLC %	NLC (\$000)	Total (\$000)	NLC %	NLC (\$000)	
Columbia	16,190.2	11.5	1,854.0	4,837.8	4.6	220.3	21,028.0
Fairweather	5,277.0	55.6	2,931.5	1,802.0	39.0	703.6	7,079.0
Kennicott	14,707.5	3.6	525.3	4,275.5	1.8	77.5	18,983.0
LeConte	7,979.7	9.3	745.3	1,914.3	4.2	80.7	9,894.0
Lituya	1,006.4	0.0	0.0	175.6	0.0	0.0	1,182.0
Malaspina	9,249.9	11.1	1,025.3	2,028.1	4.6	93.8	11,278.0
Matanuska	11,633.9	19.6	2,281.0	2,452.1	9.2	224.7	14,086.0
Taku	9,356.0	17.6	1,642.1	2,225.0	8.1	180.1	11,581.0
Tustumena	7,086.0	0.0	0.0	1,169.0	0.0	0.0	8,255.0
Contract Vessels	0.0	0.0	0.0	0.0	0.0	0.0	0.0
Subtotal Direct	95,181.2	12.7	12,072.6	25,409.8	6.6	1,682.7	120,591.0
Shoreside Costs							
Support Services	3,304.0	12.7	419.1				
Marine Engineering	1,915.0	12.7	242.9				
Operations Management	2,052.0	12.7	260.3				
Reservations/Marketing	2,406.0	13.3	319.2				
Shore Operations	5,163.0	19.7	1,019.7				
Subtotal Shoreside Costs	14,840.0	15.2	2,261.1				
Total System Operating Costs	135,431.0	11.8	16,016.4				

Table A-58: FY06 Reservations & Marketing

	Total (\$000)	LC Sales (\$000)	LC %
Sales	51,149.0	6,785.4	13.3

Table A-59: FY06 Lynn Canal Terminal Cost

	Total (\$000)	LC %	LC (\$000)
Auke Bay	627.2	50.6	317.3
Haines	534.0	78.4	418.5
Skagway	351.9	80.7	283.9
Subtotal	1,513.1	67.4	1,019.7

Table A-60: FY06 Lynn Canal Passengers On/Off

	Auke Bay	Haines	Skagway	Other	Total
Auke Bay	0	19,008	12,921	31,178	63,107
Haines	18,780	0	5,708	6,761	31,249
Skagway	13,300	4,306	0	4,220	21,826
Subtotal	32,080	23,314	18,629	42,159	116,182

Table A-61: FY07 Vessel Days

Vessel	Total	Lynn Canal	LC %
Aurora	315.7	0.0	0.0
Chenega	144.4	0.0	0.0
Columbia	242.3	29.6	12.2
Fairweather	353.0	236.5	67.0
Kennicott	309.6	4.1	1.3
LeConte	256.0	72.8	28.4
Lituya	355.4	0.0	0.0
Malaspina	177.0	21.2	12.0
Matanuska	333.6	30.1	9.0
Taku	200.5	14.2	7.1
Tustumena	324.7	0.0	0.0
Contract Vessels	73.5	0.0	0.0
Total Vessel Days	3,085.7	408.4	13.2

Table A-62: FY07 Vessel Miles

Vessel	Total	Lynn Canal	LC %
Aurora	68,859.0	0.0	0.0
Chenega	41,568.0	0.0	0.0
Columbia	97,868.0	4,525.0	4.6
Fairweather	71,131.0	30,179.0	42.4
Kennicott	74,846.0	564.0	0.8
LeConte	61,513.0	6,648.0	10.8
Lituya	16,576.0	0.0	0.0
Malaspina	52,048.0	2,794.0	5.4
Matanuska	97,184.0	3,747.0	3.9
Taku	58,563.0	2,139.0	3.7
Tustumena	64,876.0	0.0	0.0
Contract Vessels	19,471.0	0.0	0.0
Total Vessel Miles	724,503.0	50,596.0	7.0

Table A-63: FY07 Expenditures

Vessel	Total Non-Fuel Operating Expenses			Total Fuel Expenses			Total System Operating Expenses (\$000)
	Total (\$000)	NLC %	NLC (\$000)	Total (\$000)	NLC %	NLC (\$000)	
Aurora	6,016.8	0.0	0.0	1,771.2	0.0	0.0	7,788.0
Chenega	5,677.1	0.0	0.0	2,049.9	0.0	0.0	7,727.0
Columbia	15,772.6	12.2	1,926.7	4,905.4	4.6	226.8	20,678.0
Fairweather	6,231.4	67.0	4,174.8	3,092.6	42.4	1,312.1	9,324.0
Kennicott	15,302.6	1.3	204.6	4,888.4	0.8	36.8	20,191.0
LeConte	5,412.0	28.4	1,538.1	1,413.0	10.8	152.7	6,825.0
Lituya	1,012.5	0.0	0.0	240.5	0.0	0.0	1,253.0
Malaspina	9,155.8	12.0	1,095.0	2,227.2	5.4	119.6	11,383.0
Matanuska	14,835.4	9.0	1,338.3	3,731.6	3.9	143.9	18,567.0
Taku	9,508.8	7.1	673.2	2,323.2	3.7	84.9	11,832.0
Tustumena	9,029.3	0.0	0.0	1,941.7	0.0	0.0	10,971.0
Contract Vessels	1,074.0	0.0	0.0	0.0	0.0	0.0	1,074.0
Subtotal Direct	99,028.3	11.1	10,950.8	28,584.7	7.3	2,076.8	127,613.0
Shoreside Costs							
Support Services	2,142.0	11.1	236.9				
Marine Engineering	1,891.0	11.1	209.1				
Operations Management	4,063.0	11.1	449.3				
Reservations/Marketing	2,345.0	11.9	279.6				
Shore Operations	5,667.0	21.3	1,205.5				
Subtotal Shoreside Costs	16,108.0	14.8	2,380.4				
Total System Operating Costs	143,721.0	10.7	15,408.0				

Table A-64: FY07 Reservations & Marketing

	Total (\$000)	LC Sales (\$000)	LC %
Sales	48,376.0	5,768.6	11.9

Table A-65: FY07 Lynn Canal Terminal Cost

	Total (\$000)	LC %	LC (\$000)
Auke Bay	690.3	50.5	348.3
Haines	637.2	80.3	511.4
Skagway	405.6	85.3	345.8
Subtotal	1,733.1	69.6	1,205.5

Table A-66: FY07 Lynn Canal Passengers On/Off

	Auke Bay	Haines	Skagway	Other	Total
Auke Bay	0	21,441	14,163	34,957	70,561
Haines	20,874	0	5,637	6,522	33,033
Skagway	15,377	4,617	0	3,456	23,450
Subtotal	36,251	26,058	19,800	44,935	127,044

Table A-67: FY08 Vessel Days

Vessel	Total	Lynn Canal	LC %
Aurora	115.4	12.5	10.8
Chenega	260.6	21.1	8.1
Columbia	94.4	12.1	12.9
Fairweather	235.5	86.2	36.6
Kennicott	172.5	0.0	0.0
LeConte	330.4	79.0	23.9
Lituya	359.7	0.0	0.0
Malaspina	299.2	78.8	26.4
Matanuska	270.3	39.1	14.5
Taku	287.9	15.5	5.4
Tustumena	316.2	0.0	0.0
Contract Vessels	0.0	0.0	0.0
Total Vessel Days	2,742.0	344.3	12.6

Table A-68: FY08 Vessel Miles

Vessel	Total	Lynn Canal	LC %
Aurora	25,284.0	1,092.0	4.3
Chenega	48,772.0	2,038.0	4.2
Columbia	40,971.0	1,893.0	4.6
Fairweather	50,494.0	15,022.0	29.8
Kennicott	42,377.0	0.0	0.0
LeConte	50,446.0	6,564.0	13.0
Lituya	16,976.0	0.0	0.0
Malaspina	80,498.0	8,259.0	10.3
Matanuska	75,973.0	4,888.0	6.4
Taku	83,210.0	2,068.0	2.5
Tustumena	73,285.0	0.0	0.0
Contract Vessels	0.0	0.0	0.0
Total Vessel Miles	588,286.0	41,824.0	7.1

Table A-69: FY08 Expenditures

Vessel	Total Non-Fuel Operating Expenses			Total Fuel Expenses			Total System Operating Expenses (\$000)
	Total (\$000)	NLC %	NLC (\$000)	Total (\$000)	NLC %	NLC (\$000)	
Aurora	3,591.3	10.8	388.0	703.7	4.3	30.4	4,295.0
Chenega	6,809.6	8.1	551.4	3,912.4	4.2	163.5	10,722.0
Columbia	8,537.9	12.9	1,098.8	2,107.1	4.6	97.4	10,645.0
Fairweather	6,264.5	36.6	2,292.1	3,464.5	29.8	1,030.7	9,729.0
Kennicott	11,096.8	0.0	0.0	3,405.2	0.0	0.0	14,502.0
LeConte	6,673.9	23.9	1,595.6	2,355.1	13.0	306.4	9,029.0
Lituya	1,186.8	0.0	0.0	302.2	0.0	0.0	1,489.0
Malaspina	14,244.4	26.4	3,753.8	3,939.6	10.3	404.2	18,184.0
Matanuska	14,052.9	14.5	2,034.9	3,839.1	6.4	247.0	17,892.0
Taku	13,452.5	5.4	723.6	3,951.5	2.5	98.2	17,404.0
Tustumena	9,711.9	0.0	0.0	2,526.1	0.0	0.0	12,238.0
Contract Vessels	628.0	0.0	0.0	0.0	0.0	0.0	628.0
Subtotal Direct	96,250.6	12.9	12,438.3	30,506.4	7.8	2,377.8	126,757.0
Shoreside Costs							
Support Services	2,153.0	12.9	278.2				
Marine Engineering	1,916.0	12.9	247.6				
Operations Management	3,674.0	12.9	474.8				
Reservations/Marketing	2,458.0	13.6	333.4				
Shore Operations	6,136.0	21.7	1,328.9				
Subtotal Shoreside Costs	16,337.0	16.3	2,662.9				
Total System Operating Costs	143,094.0	12.2	17,479.0				

Table A-70: FY08 Reservations & Marketing

	Total (\$000)	LC Sales (\$000)	LC %
Sales	47,513.0	6,443.8	13.6

Table A-71: FY08 Lynn Canal Terminal Cost

	Total (\$000)	LC %	LC (\$000)
Auke Bay	722.6	45.3	327.5
Haines	695.7	84.3	586.1
Skagway	461.9	89.9	415.3
Subtotal	1,880.2	70.7	1,328.9

Table A-72: FY08 Lynn Canal Passengers On/Off

	Auke Bay	Haines	Skagway	Other	Total
Auke Bay	0	22,391	14,182	44,132	80,705
Haines	21,994	0	7,449	5,503	34,946
Skagway	15,642	6,310	0	2,461	24,413
Subtotal	37,636	28,701	21,631	52,096	140,064

Table A-73: FY09 Vessel Days

Vessel	Total	Lynn Canal	LC %
Aurora	330.5	0.0	0.0
Chenega	331.8	49.9	15.0
Columbia	130.3	15.0	11.5
Fairweather	91.8	16.6	18.1
Kennicott	272.6	3.4	1.3
LeConte	329.5	89.5	27.2
Lituya	356.1	0.0	0.0
Malaspina	323.5	122.3	37.8
Matanuska	96.4	10.7	11.1
Taku	323.8	19.4	6.0
Tustumena	208.1	0.0	0.0
Contract Vessels	0.2	0.0	0.0
Total Vessel Days	2,794.6	326.8	11.7

Table A-74: FY09 Vessel Miles

Vessel	Total	Lynn Canal	LC %
Aurora	59,118.0	0.0	0.0
Chenega	59,468.0	4,196.0	7.1
Columbia	49,702.0	2,346.0	4.7
Fairweather	40,242.0	4,072.0	10.1
Kennicott	65,509.0	376.0	0.6
LeConte	52,864.0	11,062.0	20.9
Lituya	16,800.0	0.0	0.0
Malaspina	84,810.0	13,591.0	16.0
Matanuska	30,522.0	2,287.0	7.5
Taku	90,116.0	2,862.0	3.2
Tustumena	40,315.0	0.0	0.0
Contract Vessels	54.0	0.0	0.0
Total Vessel Miles	589,520.0	40,792.0	6.9

Table A-75: FY09 Expenditures

Vessel	Total Non-Fuel Operating Expenses			Total Fuel Expenses			Total System Operating Expenses (\$000)
	Total (\$000)	NLC %	NLC (\$000)	Total (\$000)	NLC %	NLC (\$000)	
Aurora	6,795.1	0.0	0.0	2,618.9	0.0	0.0	9,414.0
Chenega	7,372.3	15.0	1,107.9	4,129.7	7.1	291.4	11,502.0
Columbia	11,082.7	11.5	1,278.6	3,013.3	4.7	142.2	14,096.0
Fairweather	4,448.8	18.1	803.1	2,082.2	10.1	210.7	6,531.0
Kennicott	14,427.9	1.3	182.5	4,735.1	0.6	27.2	19,163.0
LeConte	7,363.5	27.2	2,000.3	1,691.5	20.9	354.0	9,055.0
Lituya	1,196.5	0.0	0.0	211.5	0.0	0.0	1,408.0
Malaspina	14,647.0	37.8	5,537.7	3,280.0	16.0	525.6	17,927.0
Matanuska	7,914.8	11.1	878.0	1,554.2	7.5	116.5	9,469.0
Taku	13,831.0	6.0	828.4	3,419.0	3.2	108.6	17,250.0
Tustumena	7,066.6	0.0	0.0	1,549.4	0.0	0.0	8,616.0
Contract Vessels	113.0	0.0	0.0	0.0	0.0	0.0	113.0
Subtotal Direct	96,259.3	13.1	12,616.5	28,284.7	6.3	1,776.1	124,544.0
Shoreside Costs							
Support Services	2,159.0	13.1	283.0				
Marine Engineering	2,166.0	13.1	283.9				
Operations Management	3,776.0	13.1	494.9				
Reservations/Marketing	2,353.0	13.2	310.8				
Shore Operations	6,563.0	21.2	1,391.5				
Subtotal Shoreside Costs	17,017.0	16.2	2,764.1				
Total System Operating Costs	141,561.0	12.1	17,156.7				

Table A-76: FY09 Reservations & Marketing

	Total (\$000)	LC Sales (\$000)	LC %
Sales	46,152.0	6,096.5	13.2

Table A-77: FY09 Lynn Canal Terminal Cost

	Total (\$000)	LC %	LC (\$000)
Auke Bay	837.9	46.7	391.3
Haines	671.0	84.8	568.8
Skagway	478.0	90.3	431.4
Subtotal	1,986.9	70.0	1,391.5

Table A-78: FY09 Lynn Canal Passengers On/Off

	Auke Bay	Haines	Skagway	Other	Total
Auke Bay	0	19,509	13,583	37,774	70,866
Haines	19,963	0	7,390	4,914	32,267
Skagway	13,580	6,525	0	2,171	22,276
Subtotal	33,543	26,034	20,973	44,859	125,409

Table A-79: FY10 Vessel Days

Vessel	Total	Lynn Canal	LC %
Aurora	349.4	0.0	0.0
Chenega	69.8	0.0	0.0
Columbia	99.8	11.8	11.8
Fairweather	234.5	50.8	21.7
Kennicott	137.2	0.0	0.0
LeConte	303.3	94.2	31.0
Lituya	282.1	0.0	0.0
Malaspina	319.6	121.8	38.1
Matanuska	246.0	21.0	8.5
Taku	311.3	15.9	5.1
Tustumena	317.9	0.0	0.0
Contract Vessels	23.4	0.0	0.0
Total Vessel Days	2,694.2	315.5	11.7

Table A-80: FY10 Vessel Miles

Vessel	Total	Lynn Canal	LC %
Aurora	72,714.0	0.0	0.0
Chenega	35,102.0	0.0	0.0
Columbia	34,617.0	1,517.0	4.4
Fairweather	51,074.0	5,706.0	11.2
Kennicott	32,645.0	0.0	0.0
LeConte	47,219.0	11,756.0	24.9
Lituya	13,360.0	0.0	0.0
Malaspina	93,846.0	13,805.0	14.7
Matanuska	70,618.0	2,551.0	3.6
Taku	88,883.0	2,032.0	2.3
Tustumena	66,391.0	0.0	0.0
Contract Vessels	6,585.0	0.0	0.0
Total Vessel Miles	613,054.0	37,367.0	6.1

Table A-81: FY10 Expenditures

Vessel	Total Non-Fuel Operating Expenses			Total Fuel Expenses			Total System Operating Expenses (\$000)
	Total (\$000)	NLC %	NLC (\$000)	Total (\$000)	NLC %	NLC (\$000)	
Aurora	6,998.3	0.0	0.0	2,632.7	0.0	0.0	9,631.0
Chenega	4,712.4	0.0	0.0	1,079.6	0.0	0.0	5,792.0
Columbia	10,087.0	11.8	1,195.1	1,873.0	4.4	82.1	11,960.0
Fairweather	6,466.8	21.7	1,400.3	2,709.2	11.2	302.7	9,176.0
Kennicott	10,507.6	0.0	0.0	2,662.4	0.0	0.0	13,170.0
LeConte	7,225.0	31.0	2,243.3	1,595.0	24.9	397.1	8,820.0
Lituya	1,227.9	0.0	0.0	161.1	0.0	0.0	1,389.0
Malaspina	15,057.2	38.1	5,738.6	3,103.8	14.7	456.6	18,161.0
Matanuska	13,307.3	8.5	1,137.0	2,424.7	3.6	87.6	15,732.0
Taku	13,775.2	5.1	701.7	3,013.8	2.3	68.9	16,789.0
Tustumena	9,382.1	0.0	0.0	1,987.9	0.0	0.0	11,370.0
Contract Vessels	414.0	0.0	0.0	0.0	0.0	0.0	414.0
Subtotal Direct	99,160.7	12.5	12,416.0	23,243.3	6.0	1,394.9	122,404.0
Shoreside Costs							
Support Services	2,201.0	12.5	275.6				
Marine Engineering	2,180.0	12.5	273.0				
Operations Management	3,953.0	12.5	495.0				
Reservations/Marketing	2,404.0	13.4	322.4				
Shore Operations	7,119.0	20.2	1,435.5				
Subtotal Shoreside Costs	17,857.0	15.7	2,801.4				
Total System Operating Costs	140,261.0	11.8	16,612.3				

Table A-82: FY10 Reservations & Marketing

	Total (\$000)	LC Sales (\$000)	LC %
Sales	45,869.0	6,151.6	13.4

Table A-83: FY10 Lynn Canal Terminal Cost

	Total (\$000)	LC %	LC (\$000)
Auke Bay	962.4	44.6	429.1
Haines	682.6	84.4	576.1
Skagway	482.1	89.2	430.3
Subtotal	2,127.1	67.5	1,435.5

Table A-84: FY10 Lynn Canal Passengers On/Off

	Auke Bay	Haines	Skagway	Other	Total
Auke Bay	0	21,126	12,537	41,829	75,492
Haines	21,399	0	7,545	5,351	34,295
Skagway	12,978	6,832	0	2,387	22,197
Subtotal	34,377	27,958	20,082	49,567	131,984

Table A-85: FY11 Vessel Days

Vessel	Total	Lynn Canal	LC %
Aurora	312.3	55.6	17.8
Chenega	336.0	0.0	0.0
Columbia	122.1	14.7	12.1
Fairweather	250.9	61.7	24.6
Kennicott	283.3	15.2	5.4
LeConte	151.3	16.7	11.1
Lituya	350.0	0.0	0.0
Malaspina	322.6	143.0	44.3
Matanuska	305.5	20.0	6.6
Taku	131.6	0.8	0.6
Tustumena	302.7	0.0	0.0
Contract Vessels	12.6	0.0	0.0
Total Vessel Days	2,880.9	327.7	11.4

Table A-86: FY11 Vessel Miles

Vessel	Total	Lynn Canal	LC %
Aurora	58,940.0	5,454.0	9.3
Chenega	61,825.0	0.0	0.0
Columbia	34,629.0	1,692.0	4.9
Fairweather	53,106.0	5,800.0	10.9
Kennicott	69,960.0	1,841.0	2.6
LeConte	25,693.0	2,492.0	9.7
Lituya	16,544.0	0.0	0.0
Malaspina	77,927.0	14,006.0	18.0
Matanuska	86,710.0	2,963.0	3.4
Taku	46,995.0	977.0	2.1
Tustumena	60,846.0	0.0	0.0
Contract Vessels	4,830.0	0.0	0.0
Total Vessel Miles	598,005.0	35,225.0	5.9

Table A-87: FY11 Expenditures

Vessel	Total Non-Fuel Operating Expenses			Total Fuel Expenses			Total System Operating Expenses (\$000)
	Total (\$000)	NLC %	NLC (\$000)	Total (\$000)	NLC %	NLC (\$000)	
Aurora	7,934.5	17.8	1,411.9	2,109.5	9.3	195.2	10,044.0
Chenega	7,263.4	0.0	0.0	4,925.6	0.0	0.0	12,189.0
Columbia	11,866.6	12.1	1,430.4	2,957.4	4.9	144.5	14,824.0
Fairweather	6,253.8	24.6	1,536.8	3,200.2	10.9	349.5	9,454.0
Kennicott	16,059.2	5.4	860.7	5,826.8	2.6	153.3	21,886.0
LeConte	4,460.4	11.1	493.2	1,175.6	9.7	114.0	5,636.0
Lituya	1,450.9	0.0	0.0	284.1	0.0	0.0	1,735.0
Malaspina	15,971.8	44.3	7,079.4	4,186.2	18.0	752.4	20,158.0
Matanuska	16,186.2	6.6	1,060.9	4,268.8	3.4	145.9	20,455.0
Taku	8,808.3	0.6	56.1	1,719.7	2.1	35.8	10,528.0
Tustumena	10,190.5	0.0	0.0	2,340.5	0.0	0.0	12,531.0
Contract Vessels	393.0	0.0	0.0	0.0	0.0	0.0	393.0
Subtotal Direct	106,838.6	13.0	13,929.5	32,994.4	5.7	1,890.6	139,833.0
Shoreside Costs							
Support Services	2,264.0	13.0	295.2				
Marine Engineering	2,108.0	13.0	274.8				
Operations Management	4,140.0	13.0	539.8				
Reservations/Marketing	2,577.0	12.4	319.2				
Shore Operations	7,810.0	20.1	1,567.8				
Subtotal Shoreside Costs	18,899.0	15.9	2,996.8				
Total System Operating Costs	158,732.0	11.9	18,816.8				

Table A-88: FY11 Reservations & Marketing

	Total (\$000)	LC Sales (\$000)	LC %
Sales	47,607.0	5,896.5	12.4

Table A-89: FY11 Lynn Canal Terminal Cost

	Total (\$000)	LC %	LC (\$000)
Auke Bay	1,053.2	44.9	472.4
Haines	726.1	85.6	621.2
Skagway	538.4	88.1	474.1
Subtotal	2,317.7	67.6	1,567.8

Table A-90: FY11 Lynn Canal Passengers On/Off

	Auke Bay	Haines	Skagway	Other	Total
Auke Bay	0	21,671	11,584	40,881	74,136
Haines	21,957	0	7,137	4,911	34,005
Skagway	12,190	6,493	0	2,533	21,216
Subtotal	34,147	28,164	18,721	48,325	129,357

Table A-91: FY12 Vessel Days

Vessel	Total	Lynn Canal	LC %
Aurora	166.4	0.0	0.0
Chenega	197.4	0.0	0.0
Columbia	183.8	22.4	12.2
Fairweather	289.1	8.2	2.8
Kennicott	237.0	0.0	0.0
LeConte	335.4	115.9	34.5
Lituya	350.7	0.0	0.0
Malaspina	207.0	150.4	72.6
Matanuska	302.1	32.5	10.7
Taku	304.4	0.8	0.3
Tustumena	306.9	0.0	0.0
Contract Vessels	8.6	0.0	0.0
Total Vessel Days	2,888.8	330.1	11.4

Table A-92: FY12 Vessel Miles

Vessel	Total	Lynn Canal	LC %
Aurora	27,010.0	0.0	0.0
Chenega	40,874.0	0.0	0.0
Columbia	53,193.0	2,444.0	4.6
Fairweather	56,979.0	2,728.0	4.8
Kennicott	61,911.0	0.0	0.0
LeConte	53,825.0	10,708.0	19.9
Lituya	16,608.0	0.0	0.0
Malaspina	39,601.0	13,147.0	33.2
Matanuska	79,750.0	3,640.0	4.6
Taku	80,286.0	94.0	0.1
Tustumena	57,198.0	0.0	0.0
Contract Vessels	2,908.0	0.0	0.0
Total Vessel Miles	570,143.0	32,761.0	5.7

Table A-93: FY12 Expenditures

Vessel	Total Non-Fuel Operating Expenses			Total Fuel Expenses			Total System Operating Expenses (\$000)
	Total (\$000)	NLC %	NLC (\$000)	Total (\$000)	NLC %	NLC (\$000)	
Aurora	4,969.7	0.0	0.0	1,225.3	0.0	0.0	6,195.0
Chenega	6,526.4	0.0	0.0	3,638.6	0.0	0.0	10,165.0
Columbia	15,170.6	12.5	1,845.0	5,272.4	4.6	242.2	20,443.0
Fairweather	6,797.6	2.8	191.9	4,071.4	4.8	194.9	10,869.0
Kennicott	14,983.8	0.0	0.0	6,137.2	0.0	0.0	21,121.0
LeConte	9,145.5	34.5	3,159.7	2,688.5	19.9	534.9	11,834.0
Lituya	1,410.6	0.0	0.0	329.4	0.0	0.0	1,740.0
Malaspina	11,908.4	72.6	8,650.2	2,827.6	33.2	938.7	14,736.0
Matanuska	16,609.6	10.7	1,785.1	4,882.4	4.6	222.8	21,492.0
Taku	15,171.5	0.3	41.5	4,262.5	0.1	5.0	19,434.0
Tustumena	10,688.8	0.0	0.0	2,745.2	0.0	0.0	13,434.0
Contract Vessels	77.0	0.0	0.0	0.0	0.0	0.0	77.0
Subtotal Direct	113,459.4	13.8	15,673.4	38,080.6	5.6	2,138.6	151,540.0
Shoreside Costs							
Support Services	2,363.0	13.8	326.4				
Marine Engineering	2,059.0	13.8	284.4				
Operations Management	4,450.0	13.8	614.7				
Reservations/Marketing	2,475.0	12.3	304.2				
Shore Operations	8,155.0	20.4	1,666.0				
Subtotal Shoreside Costs	19,502.0	16.4	3,195.8				
Total System Operating Costs	171,042.0	12.3	21,007.8				

Table A-94: FY12 Reservations & Marketing

	Total (\$000)	LC Sales (\$000)	LC %
Sales	53,506.0	6,577.1	12.3

Table A-95: FY12 Lynn Canal Terminal Cost

	Total (\$000)	LC %	LC (\$000)
Auke Bay	1,122.9	44.4	498.7
Haines	735.0	84.7	622.2
Skagway	614.4	88.7	545.1
Subtotal	2,472.3	67.4	1,666.0

Table A-96: FY12 Lynn Canal Passengers On/Off

	Auke Bay	Haines	Skagway	Other	Total
Auke Bay	0.0	21,677.0	12,235.0	42,456.0	76,368.0
Haines	21,817.0	0.0	8,160.0	5,434.0	35,411.0
Skagway	12,664.0	6,755.0	0.0	2,466.0	21,885.0
Subtotal	34,481.0	28,432.0	20,395.0	50,356.0	133,664.0

Table A-97: FY13 Vessel Days

Vessel	Total	Lynn Canal	LC %
Aurora	343.6	0.0	0.0
Chenega	166.1	0.0	0.0
Columbia	248.9	31.1	12.5
Fairweather	214.5	22.8	10.7
Kennicott	318.4	0.0	0.0
LeConte	324.3	81.8	25.2
Lituya	347.7	0.0	0.0
Malaspina	151.6	148.4	97.9
Matanuska	301.6	34.4	11.4
Taku	299.0	11.4	3.8
Tustumena	121.4	0.0	0.0
Contract Vessels	1.6	0.0	0.0
Total Vessel Days	2,838.7	330.1	11.6

Table A-98: FY13 Vessel Miles

Vessel	Total	Lynn Canal	LC %
Aurora	54,935.0	0.0	0.0
Chenega	32,732.0	0.0	0.0
Columbia	71,634.0	5,832.0	8.1
Fairweather	39,772.0	2,838.0	7.1
Kennicott	78,977.0	0.0	0.0
LeConte	46,294.0	13,096.0	28.3
Lituya	16,016.0	0.0	0.0
Malaspina	18,835.0	18,711.0	99.3
Matanuska	79,342.0	6,674.0	8.4
Taku	76,572.0	2,636.0	3.4
Tustumena	23,362.0	0.0	0.0
Contract Vessels	88.0	0.0	0.0
Total Vessel Miles	538,559.0	49,787.0	9.2

Table A-99: FY13 Expenditures

Vessel	Total Non-Fuel Operating Expenses			Total Fuel Expenses			Total System Operating Expenses (\$000)
	Total (\$000)	NLC %	NLC (\$000)	Total (\$000)	NLC %	NLC (\$000)	
Aurora	7,373.4	0.0	0.0	2,469.9	0.0	0.0	9,843.3
Chenega	6,828.4	0.0	0.0	3,007.6	0.0	0.0	9,836.0
Columbia	18,091.0	12.5	2,259.6	6,662.3	8.1	542.4	24,753.3
Fairweather	6,327.6	10.7	674.0	3,114.8	7.1	222.3	9,442.4
Kennicott	18,530.7	0.0	0.0	7,182.1	0.0	0.0	25,712.8
LeConte	9,196.7	25.2	2,320.7	2,382.2	28.3	673.9	11,578.9
Lituya	1,347.7	0.0	0.0	312.7	0.0	0.0	1,660.4
Malaspina	8,949.4	97.9	8,761.3	1,463.5	99.3	1,453.9	10,412.9
Matanuska	16,762.5	11.4	1,914.7	4,698.6	8.4	395.2	21,461.1
Taku	15,291.8	3.8	585.3	4,166.4	3.4	143.4	19,458.2
Tustumena	6,935.8	0.0	0.0	992.0	0.0	0.0	7,927.8
Contract Vessels	0.0	0.0	0.0	0.0	0.0	0.0	0.0
Subtotal Direct	115,635.0	14.3	16,515.5	36,452.1	9.4	3,431.1	152,087.1
Shoreside Costs							
Support Services	2,454.0	14.3	350.5				
Marine Engineering	2,442.0	14.3	348.8				
Operations Management	4,810.0	14.3	687.0				
Reservations/Marketing	2,558.0	11.2	287.6				
Shore Operations	8,176.0	19.8	1,621.2				
Subtotal Shoreside Costs	20,440.0	16.1	3,295.1				
Total System Operating Costs	172,527	13.5	23,241.7				

Table A-100: FY13 Reservations & Marketing

	Total (\$000)	LC Sales (\$000)	LC %
Sales	52,713.0	5,927.0	11.2

Table A-101: FY13 Lynn Canal Terminal Cost

	Total (\$000)	LC %	LC (\$000)
Auke Bay	1,173.4	44.1	517.3
Haines	694.5	84.7	588.3
Skagway	576.6	89.4	515.7
Subtotal	2,444.5	66.3	1,621.2

Table A-102: FY13 Lynn Canal Passengers On/Off

	Auke Bay	Haines	Skagway	Other	Total
Auke Bay	0.0	21,739	12,370	43,268	77,377
Haines	22,033	0.0	8,420	5,497	35,950
Skagway	13,074	7,101	0.0	2,384	22,559
Subtotal	35,107	28,840	20,790	51,149	135,886

Table A-103: FY14 Vessel Days

Vessel	Total	Lynn Canal	LC %
Aurora	297.7	3.3	1.1
Chenega	193.4	0.0	0.0
Columbia	81.5	9.4	11.5
Fairweather	138.5	15.6	11.3
Kennicott	226.6	0.0	0.0
LeConte	320.0	97.9	30.6
Lituya	349.0	0.0	0.0
Malaspina	301.8	99.4	32.9
Matanuska	206.0	24.9	12.1
Taku	318.0	48.7	15.3
Tustumena	209.1	0.0	0.0
Contract Vessels	0.7	0.0	0.0
Total Vessel Days	2,642.3	299.1	11.3

Table A-104: FY14 Vessel Miles

Vessel	Total	Lynn Canal	LC %
Aurora	42,461.0	324.0	0.8
Chenega	34,733.0	0.0	0.0
Columbia	22,514.0	1,701.0	7.6
Fairweather	32,845.0	2,546.0	7.8
Kennicott	57,343.0	0.0	0.0
LeConte	47,115.0	15,370.0	32.6
Lituya	8,256.0	0.0	0.0
Malaspina	75,201.0	15,338.0	20.4
Matanuska	53,094.0	4,620.0	8.7
Taku	78,827.0	8,318.0	10.6
Tustumena	34,347.0	0.0	0.0
Contract Vessels	17.0	0.0	0.0
Total Vessel Miles	486,753.0	48,217.0	9.9

Table A-105: FY14 Expenditures

Vessel	Total Non-Fuel Operating Expenses			Total Fuel Expenses			Total System Operating Expenses (\$000)
	Total (\$000)	NLC %	NLC (\$000)	Total (\$000)	NLC %	NLC (\$000)	
Aurora	6,652.3	1.1	72.6	1,960.5	0.8	15.0	8,612.8
Chenega	6,736.2	0.0	0.0	3,052.5	0.0	0.0	9,788.7
Columbia	9,575.6	11.5	1,104.0	2,344.3	7.6	177.1	11,919.9
Fairweather	5,633.0	11.3	634.8	2,455.4	7.8	190.3	8,088.4
Kennicott	14,532.0	0.0	0.0	5,692.2	0.0	0.0	20,224.2
LeConte	9,673.5	30.6	2,959.1	2,502.9	32.6	816.5	12,176.4
Lituya	1,309.7	0.0	0.0	158.0	0.0	0.0	1,467.7
Malaspina	16,349.7	32.9	5,386.7	4,440.0	20.4	905.6	20,789.7
Matanuska	14,542.4	12.1	1,755.9	3,440.9	8.7	299.4	17,983.3
Taku	17,610.7	15.3	2,696.3	4,261.3	10.6	449.7	21,872.0
Tustumena	10,292.0	0.0	0.0	1,947.1	0.0	0.0	12,239.1
Contract Vessels	0.0	0.0	0.0	0.0	0.0	0.0	0.0
Subtotal Direct	112,907.1	12.9	14,609.5	32,255.1	8.8	2,853.6	145,162.2
Shoreside Costs							
Support Services	2,434.0	12.9	314.9				
Marine Engineering	2,632.0	12.9	340.6				
Operations Management	5,057.0	12.9	654.3				
Reservations/Marketing	2,432.0	12.3	298.9				
Shore Operations	8,305.0	19.5	1,622.9				
Subtotal Shoreside Costs	20,860.0	15.5	3,231.7				
Total System Operating Costs	166,022	12.5	20,694.8				

Table A-106: FY14 Reservations & Marketing

	Total (\$000)	LC Sales (\$000)	LC %
Sales	53,506.0	6,577.1	12.3

Table A-107: FY14 Lynn Canal Terminal Cost

	Total (\$000)	LC %	LC (\$000)
Auke Bay	1,239.4	44.7	554.0
Haines	665.1	84.6	563.0
Skagway	567.3	89.2	505.9
Subtotal	2,471.8	65.7	1,622.9

Table A-108: FY14 Lynn Canal Passengers On/Off

	Auke Bay	Haines	Skagway	Other	Total
Auke Bay	0.0	21,031	11,344	40,053	72,428
Haines	21,618	0.0	7,989	5,370	34,977
Skagway	11,984	6,685	0.0	2,266	20,935
Subtotal	33,602	27,716	19,333	47,689	128,340

Table A-109: FY15 Vessel Days

Vessel	Total	Lynn Canal	LC %
Aurora	326.0	88.0	27.0
Chenega	121.0	0.0	0.0
Columbia	112.0	24.0	21.4
Fairweather	179.0	3.0	1.7
Kennicott	173.0	0.0	0.0
LeConte	121.0	10.0	8.3
Lituya	241.0	0.0	0.0
Malaspina	225.0	101.0	44.9
Matanuska	128.0	36.0	28.1
Taku	348.0	63.0	18.1
Tustumena	284.0	0.0	0.0
Contract Vessels	0.0	0.0	0.0
Total Vessel Days	2,258.0	325.0	14.4

Table A-110: FY15 Vessel Miles

Vessel	Total	Lynn Canal	LC %
Aurora	55,927.0	12,142.0	21.7
Chenega	27,432.0	0.0	0.0
Columbia	44,506.0	3,564.0	8.0
Fairweather	40,176.0	596.0	1.5
Kennicott	55,432.0	0.0	0.0
LeConte	15,489.0	1,594.0	10.3
Lituya	7,760.0	0.0	0.0
Malaspina	73,350.0	17,496.0	23.9
Matanuska	31,775.0	3,133.0	9.9
Taku	86,439.0	10,568.0	12.2
Tustumena	51,520.0	0.0	0.0
Contract Vessels	0.0	0.0	0.0
Total Vessel Miles	489,806.0	49,093.0	10.0

Table A-111: FY15 Expenditures

Vessel	Total Non-Fuel Operating Expenses			Total Fuel Expenses			Total System Operating Expenses (\$000)
	Total (\$000)	NLC %	NLC (\$000)	Total (\$000)	NLC %	NLC (\$000)	
Aurora	6,160.8	27.0	1,663.0	1,845.5	21.7	400.7	8,006.3
Chenega	5,948.0	0.0	0.0	2,243.3	0.0	0.0	8,191.3
Columbia	16,144.3	21.4	3,459.5	3,426.7	8.0	274.4	19,571.0
Fairweather	6,893.4	1.7	115.5	2,718.8	1.5	40.3	9,612.2
Kennicott	14,219.1	0.0	0.0	4,450.2	0.0	0.0	18,669.3
LeConte	7,567.9	8.3	625.4	725.3	10.3	74.6	8,293.2
Lituya	1,414.2	0.0	0.0	106.1	0.0	0.0	1,520.3
Malaspina	15,842.0	44.9	7,111.3	3,177.6	23.9	757.9	19,019.6
Matanuska	11,464.0	28.1	3,224.3	1,804.9	9.9	178.0	13,268.9
Taku	17,052.6	18.1	3,087.1	3,774.1	12.2	461.4	20,826.7
Tustumena	10,998.8	0.0	0.0	2,128.5	0.0	0.0	13,127.3
Contract Vessels	0.0	0.0	0.0	0.0	0.0	0.0	0.0
Subtotal Direct	113,705.1	17.0	19,286.2	26,401.0	8.3	2,187.4	140,106.1
Shoreside Costs							
Support Services	2,432.0	17.0	412.5				
Marine Engineering	2,609.0	17.0	442.5				
Operations Management	4,950.0	17.0	839.6				
Reservations/Marketing	2,394.0	10.3	247.7				
Shore Operations	8,307.0	19.8	1,644.8				
Subtotal Shoreside Costs	20,692.0	17.3	3,587.1				
Total System Operating Costs	160,798	15.6	25,060.6				

Table A-112: FY15 Reservations & Marketing

	Total (\$000)	LC Sales (\$000)	LC %
Sales	53,728.4	5,559.2	10.3

Table A-113: FY15 Lynn Canal Terminal Cost

	Total (\$000)	LC %	LC (\$000)
Auke Bay	1,244.8	47.8	595.2
Haines	622.1	87.0	541.2
Skagway	577.4	88.0	508.3
Subtotal	2,444.3	67.3	1,644.8

Table A-114: FY15 Lynn Canal Passengers On/Off

	Auke Bay	Haines	Skagway	Other	Total
Auke Bay	0.0	21,214	11,240	35,968	68,422
Haines	21,103	0.0	9,554	4,843	35,500
Skagway	12,271	7,229	0.0	2,576	22,076
Subtotal	33,374	28,443	20,794	43,387	125,998

This page intentionally left blank.

Appendix B

**AMHS Revenues and Expenditures by Vessel,
Fiscal Years 2004-2015**

*AMHS, Alaska Marine Highway System Fund Annual Financial Report
for the Fiscal Year Ended June 30, 2015*

This page intentionally left blank.

OPERATING REVENUES BY VESSEL

**Alaska Marine Highway System
Revenue by Vessel***
Fiscal Years 2004 - 2015 (In Thousands)

Vessel	FY04	FY05	FY06	FY07	FY08	FY09	FY10	FY11	FY12	FY13	FY14	FY15
Aurora	3,749	2,333	2,327	2,003	1,347	2,191	3,115	2,522	1,898	2,679	2,421	4,059
Bartlett	1,387	-	-	-	-	-	-	-	-	-	-	-
Chenega	-	-	1,128	1,963	3,093	3,380	1,392	3,428	2,889	2,221	2,358	1,914
Columbia	7,763	7,917	15,530	12,439	6,463	9,713	7,924	8,939	13,014	16,635	6,682	11,778
Fairweather	401	3,003	2,257	2,913	2,605	1,015	1,945	1,805	1,659	1,537	1,415	1,684
Kennicott	5,276	5,662	6,209	5,831	3,414	5,182	3,125	7,154	8,151	9,195	8,425	8,265
Leconte	880	1,396	1,638	916	1,514	1,808	1,757	794	2,537	2,006	2,499	854
Lituya	78	593	593	593	721	639	620	724	822	774	769	848
Malaspina	12,550	11,975	7,832	7,552	11,659	10,980	11,446	10,520	5,765	3,133	12,051	11,036
Matanuska	3,798	8,762	7,418	8,146	8,841	3,094	6,211	6,100	9,003	9,217	7,154	3,989
Taku	5,039	761	3,292	2,833	4,480	5,156	4,755	2,265	4,001	3,839	4,789	5,474
Tustumena	3,366	3,196	2,849	3,060	3,376	2,992	3,525	3,318	3,755	1,875	2,106	3,828
Contract Vessels	3	-	76	127	-	2	54	39	12	2	-	-
Non Vessel Revenue	399	64	53	32	135	46	46	89	180	121	207	167
TOTAL	44,689	45,662	51,202	48,407	47,647	46,200	45,914	47,697	53,684	53,234	50,877	53,896

*These figures are close approximations based on reservations and ticketing information. They may be used to show relative magnitude of different vessel operations. They are not accounting figures. Therefore, attempts to reconcile the figures with accounting documents may yield small discrepancies.

OPERATING EXPENDITURES BY VESSEL

**Alaska Marine Highway System
 Operating Expenditures by Vessel***
 Fiscal Years 2004 - 2015 (In Thousands)

Vessel	FY04	FY05	FY06	FY07	FY08	FY09	FY10	FY11	FY12	FY13	FY14	FY15
Aurora	5,565	3,533	6,434	6,264	3,649	7,649	7,720	8,065	5,380	8,104	7,013	6,446
Bartlett	1,032	-	-	-	-	-	-	-	-	-	-	-
Chenega	-	314	7,778	6,360	8,845	9,474	4,643	10,146	8,513	8,098	7,971	6,595
Columbia	7,787	7,336	17,205	16,735	8,892	11,231	9,587	11,861	17,292	20,380	9,706	15,757
Fairweather	692	5,635	5,887	7,762	8,154	4,949	7,356	7,824	9,539	7,774	6,586	7,739
Kennicott	9,744	9,535	15,624	16,300	11,853	15,091	10,557	18,022	17,341	21,170	16,468	15,031
LeConte	4,037	5,869	8,129	5,485	7,141	6,912	7,070	4,858	9,807	9,533	9,915	6,677
Lituya	177	629	961	1,008	1,170	1,189	1,114	1,415	1,381	1,367	1,195	1,224
Malaspina	10,131	11,492	9,219	9,089	14,664	14,065	14,558	16,147	11,843	8,573	16,929	15,313
Matanuska	5,018	11,202	11,456	14,814	14,160	7,260	12,611	16,246	17,390	17,669	14,644	10,683
Taku	8,709	4,107	9,436	9,452	13,745	13,583	13,458	8,853	15,880	16,020	17,810	16,768
Tustumena	5,483	6,269	6,378	8,744	9,612	6,642	9,114	10,068	10,978	6,527	9,966	10,569
Vessel Leave	9,824	9,204	11,571	14,576	15,164	14,268	14,375	15,949	16,605	16,695	17,234	9,006
All Vessels	9,077	13,904	10,123	11,024	9,709	12,231	10,240	10,379	9,591	10,178	9,725	18,298
TOTAL	77,275	89,028	120,201	127,613	126,757	124,542	122,404	139,834	151,540	152,087	145,162	140,106

* Expenditures by vessel include the following operating components: Marine Vessel Operations, Overhaul, Fuel and unbudgeted AMHS Reimbursable, Service Agreements (RSA). Not included are the budget components for Marine Engineering, Operations Management, Reservations and Marketing, and Shore Operations.

Appendix C

Annual Average Daily Traffic (ADT) 2005 to 2015

AMHS, Annual Traffic Volume Reports, 2005-2015

This page intentionally left blank.

Table C-1: Lynn Canal Annual Average Daily Traffic (ADT) 2005 to 2015 Auke Bay to Haines, Haines to Auke Bay, Auke Bay to Skagway, and Skagway to Auke Bay (total for all routes)

Year	Round Trips	Traffic Volumes for Year (Vehicles)	Annual Average Daily Traffic	Passenger Traffic
2005	403	25,492	70	91,293
2006	398	25,258	69	85,872
2007	434	26,377	72	90,433
2008	391	26,527	73	90,046
2009	340	24,703	68	80,804
2010	329	24,841	68	82,929
2011	344	25,082	69	82,186
2012	296	26,115	72	83,945
2013	323	26,372	72	84,473
2014	308	24,956	68	80,689
2015	297	23,543	65	74,623
Average	351	25,388	70	84,299

Source: AMHS, Southeast Alaska Link Volume Tables, Annual Traffic Volume Reports, 2005-2015 (DOT&PF).

This page intentionally left blank.