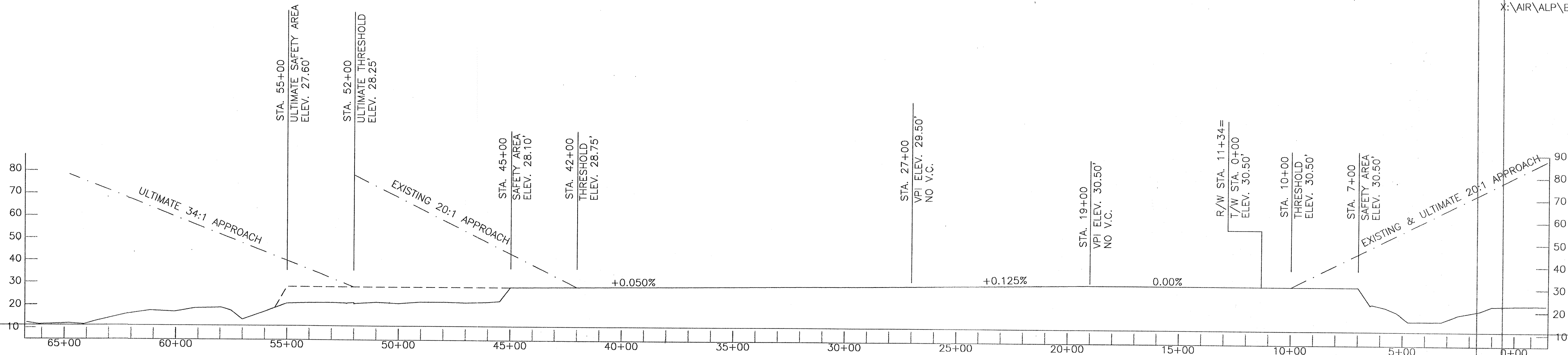
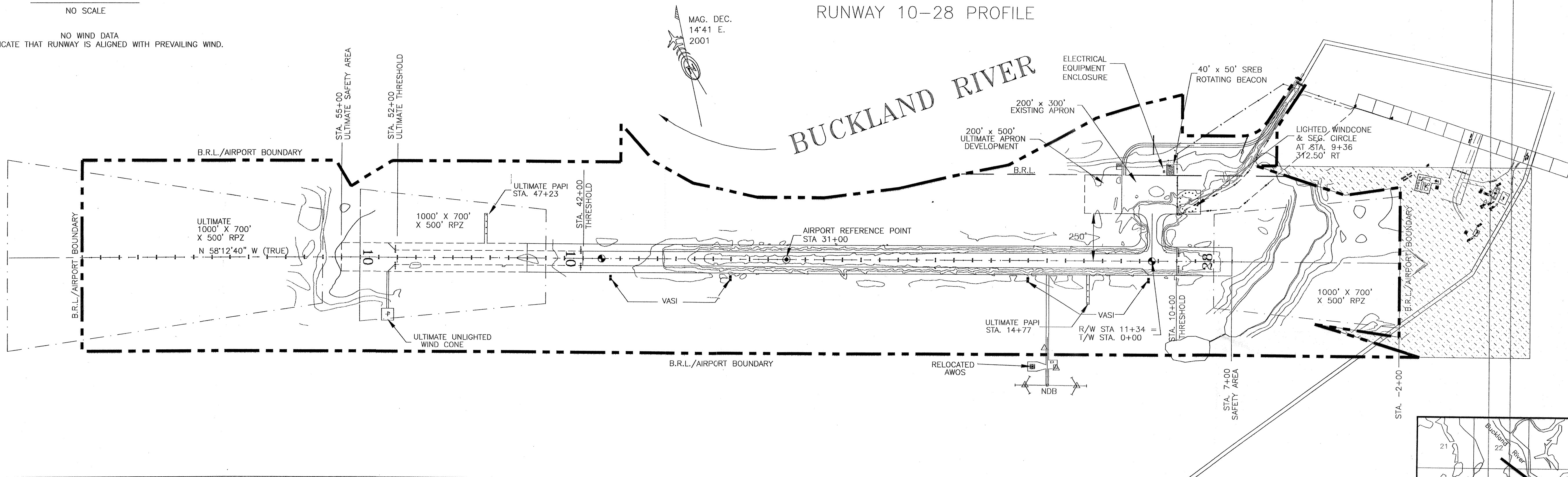


LOCATION MAP
NO SCALE

NO WIND DATA
PILOTS INDICATE THAT RUNWAY IS ALIGNED WITH PREVAILING WIND.



RUNWAY 10-28 PROFILE

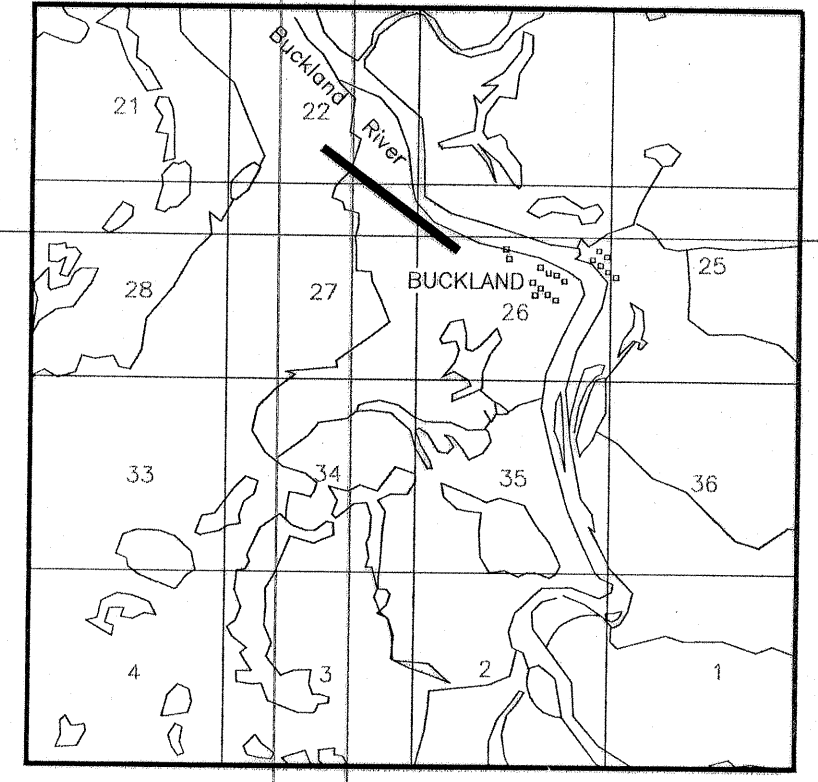


RUNWAY DATA		
	EXISTING	ULTIMATE
% WIND COVERAGE	NO DATA	NO DATA
APPROACH VISIBILITY MINIMUM	≥ 1 mile	≥ 1 mile
RUNWAY SURFACE TYPE	GRAVEL	SAME
PAVEMENT STRENGTH	N/A	SAME
APPROACH SURFACES	20:1	34:1/20:1
RUNWAY LIGHTING	MIRL	SAME
RUNWAY MARKING	NONE	SAME
VISUAL APPROACH AIDS	VASI	PAPI
R/W DIMENSIONS	3200' x 75'	4200' x 75'
R/W SAFETY AREA	3800' x 150'	4800' x 150'
ROFZ	3600' x 400'	4600' x 400'
ROFA	3800' x 500'	4800' x 500'
T/W WIDTH	50'	SAME
T/W SAFETY AREA WIDTH	118'	SAME
T/W OFA	186'	SAME

AIRPORT DATA			
	EXISTING	ULTIMATE	
AIRPORT ELEVATION (MSL)	30.5'	30.5'	
AIRPORT REFERENCE CODE	B-II	B-II	
MEAN DAILY MAX. TEMP. HOTTEST MONTH (JULY)	60° F	60° F	
TAXIWAY LIGHTING	MITL	MITL	
RAMP LIGHTING	FLOODLIGHT	FLOODLIGHT	
NAVIGATION AIDS	NDB, AWOS	NDB, AWOS, GPS	
COMMUNICATION AIDS	NONE	SAME	
AIRPORT REFERENCE POINT (ARP)	LAT. N 65°58'56.23"		
	LONG. W 161°09'07.12"		
STA 31+00	LAT. N 65°58'45.34"		
	LONG. W 161°08'24.01"		
THRESHOLD EXIST. 10+00	LAT. N 65°59'01.93"	N 65°59'07.12"	
	LONG. W 161°09'29.70"	W 161°09'50.24"	
THRESHOLD EXIST. 42+00	ULT. 52+00		

LEGEND		
	EXISTING	ULTIMATE
PROPERTY LINE	---	---
BUILDING RESTRICTION LINE (B.R.L.)	---	---
DEVELOPMENT	▭	▭
WIND CONE AND SEGMENTED CIRCLE	⊙	⊙
BUILDINGS	▭	▭
ROADWAYS	▭	▭
AVIGATION EASEMENT	▭	▭
AIRPORT REFERENCE POINT	⊙	⊙
ROTATING BEACON	⊙	⊙
ANTENNAE/TOWERS	⊙	⊙
VASI	⊙	⊙

- NOTES:
- NO OFZ OBJECT PENETRATIONS.
 - NO THRESHOLD SITING SURFACE OBJECT PENETRATIONS.
 - THE GEODETIC COORDINATES WERE CALCULATED FROM COORDINATES PUBLISHED IN THE "RECORD OF SURVEY" DATED NOV. 1995.
 - DATA BASE CONTROL YEAR: NAD 83.



VICINITY MAP
NO SCALE
SECT. 26, T7N, R12W, KATEEL RIVER MERIDIAN
USGS - CANDLE (D-5) QUAD.

DESIGN	ACU
DRAWN	CAT
CHECKED	PKS
CAT	3/18/02 AS-BUILT
	10/18/01 FAA APPROVED
CAT	8/13/99 AS-BUILT
BY	DATE
	REVISIONS

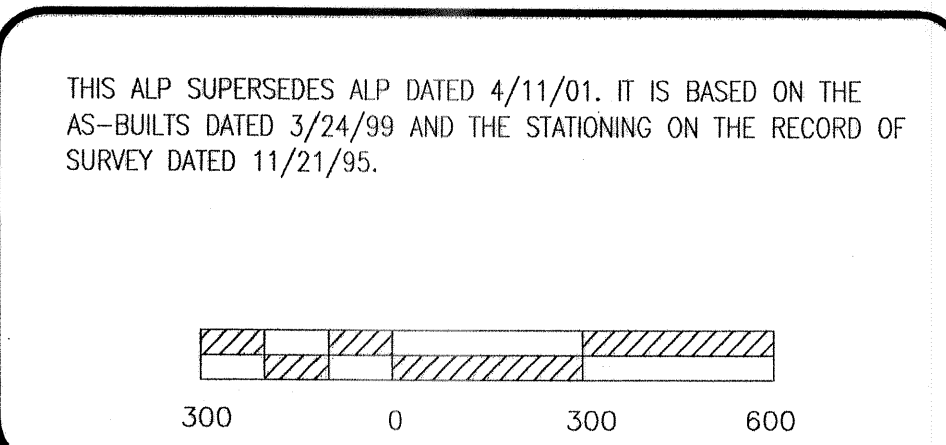
STATE OF ALASKA
DEPARTMENT OF TRANSPORTATION AND PUBLIC FACILITIES
NORTHERN REGION-WESTERN DISTRICT-DESIGN & ENGINEERING SERVICES

APPROVED
/s/ Patricia D. Miller
PATRICIA D. MILLER, P.E.

DATE 3/18/02
DESIGN GROUP CHIEF

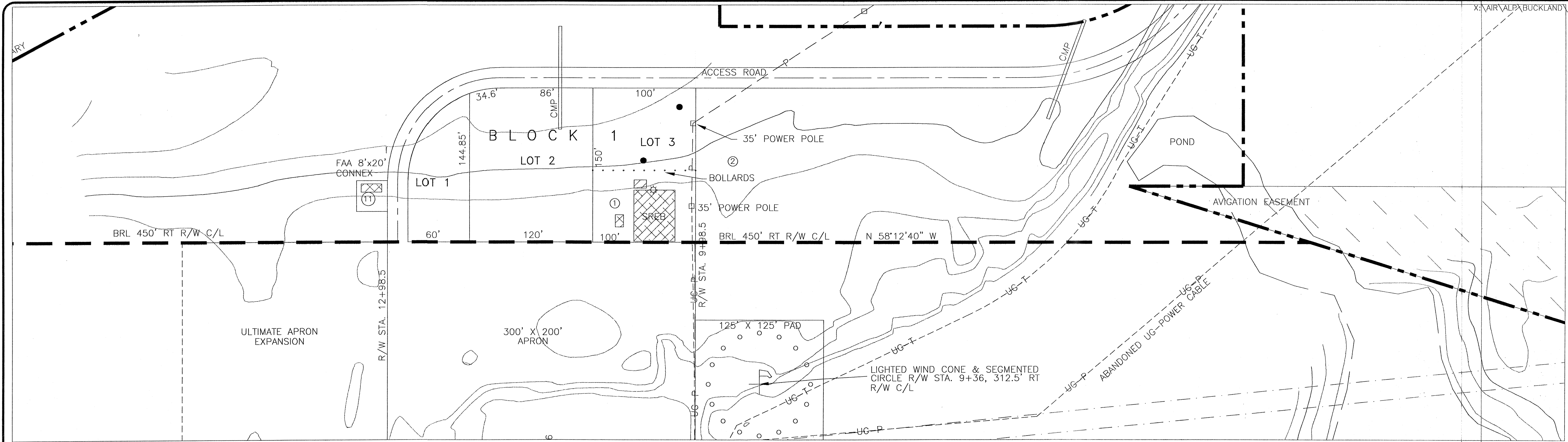
REVISED AIRPORT LAYOUT PLAN APPROVED
BY LETTER DATED: 3/27/02

Robert Orr
AIRPORTS DIVISION,
ALASKAN REGION, AAL-620
AIRSPACE REVIEW #145AAL-095NRA

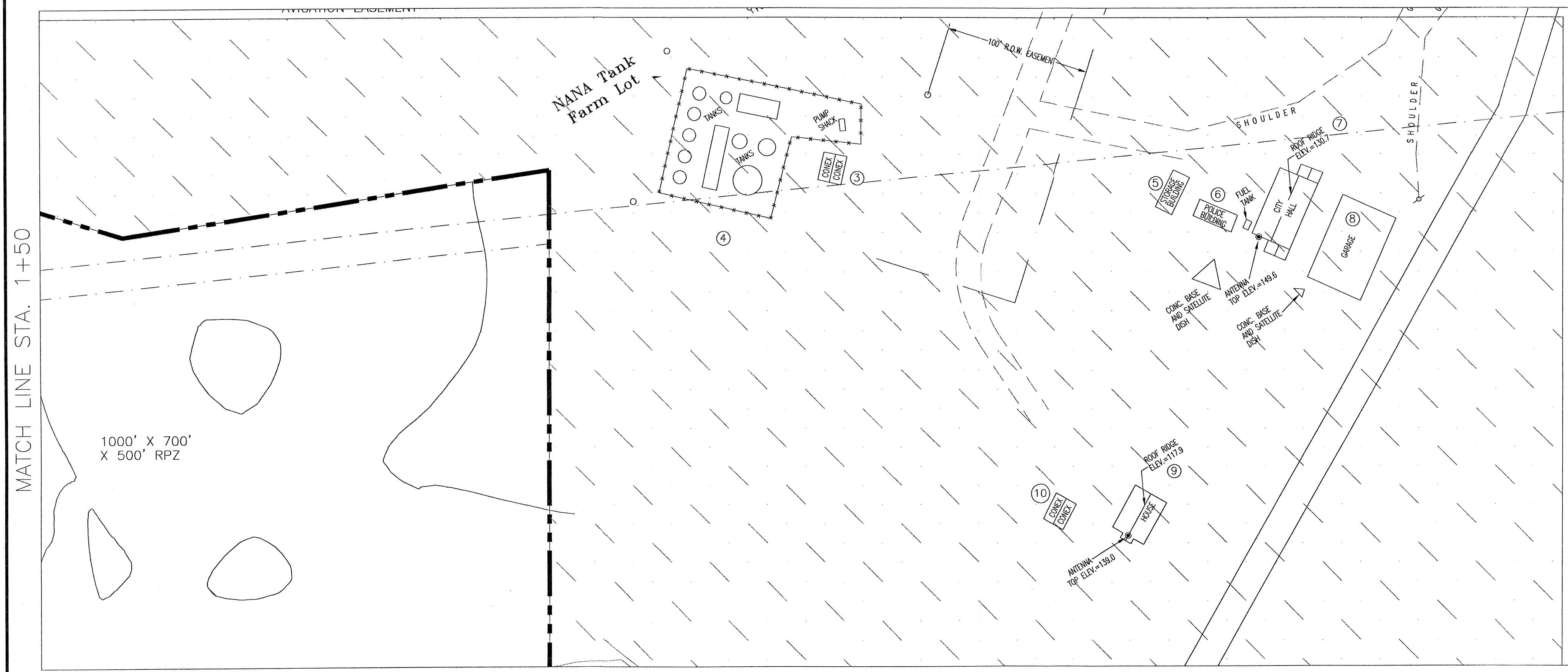


BUCKLAND AIRPORT
AIRPORT LAYOUT PLAN

SHEET
1
OF
4



MATCH LINE STA. 1+50



MATCH LINE STA. 1+50

MAG. DEC.
14°41' E.
2001

#	STRUCTURE NAME	TOP ELEV. MSL	OBSTRUCTION MARKING (Y/N)		REMARKS
			EXISTING	ULTIMATE	
1	ELECTRICAL EQUIPMENT BUILDING	30'	N	N	
2	SREB	49'	N	N	
3	CONEX BLDGS	UNKNOWN	N	N	
4	FUEL TANK RAILING	45.3'	N	N	
5	STORAGE BLDG	UNKNOWN	N	N	
6	POLICE BLDG	UNKNOWN	N	N	
7	CITY HALL BLDG	54.2	N	N	
8	GARAGE	UNKNOWN	N	N	
9	HOUSE	41.4'	N	N	
10	CONEX BLDGS	UNKNOWN	N	N	
11	CONEX BLDG	30'	N	N	NO PENETRATIONS

DESIGN ACU			
DRAWN CAT			
CHECKED PKS			
BY	DATE	REVISIONS	

STATE OF ALASKA
DEPARTMENT OF TRANSPORTATION AND PUBLIC FACILITIES
NORTHERN REGION-WESTERN DISTRICT-DESIGN & ENGINEERING SERVICES

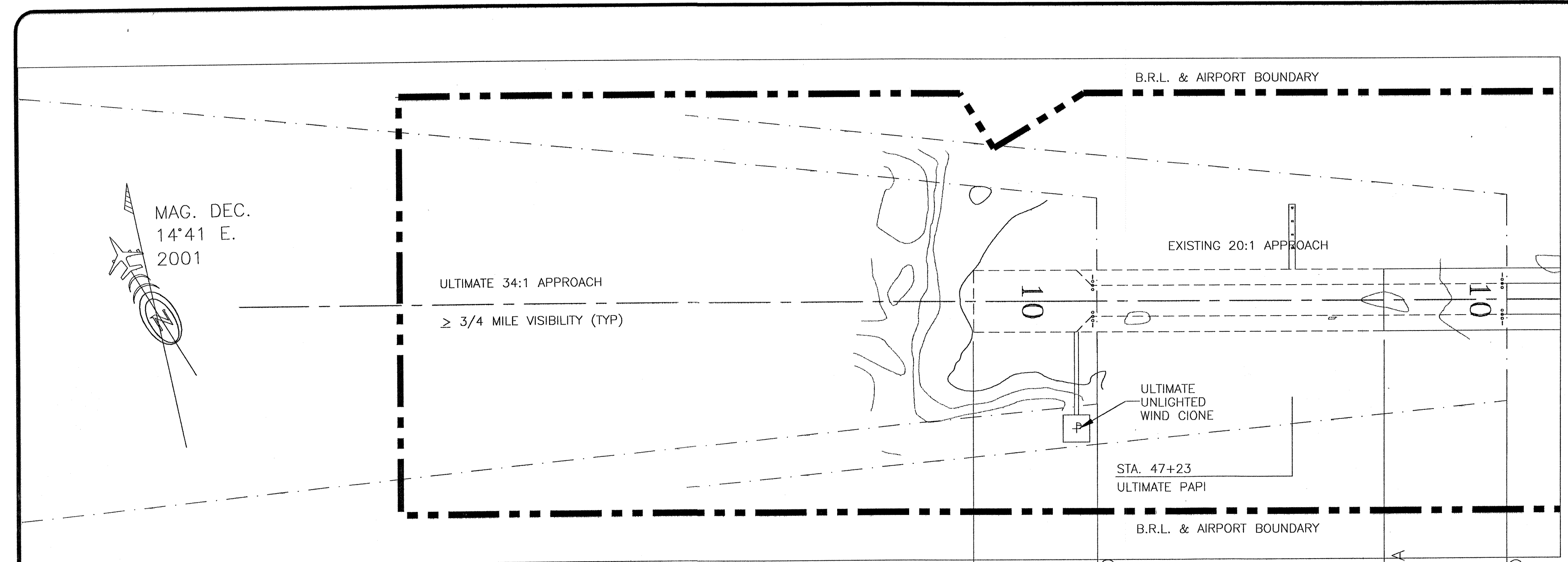
APPROVED *Patricia D. Miller* DATE 3/18/02
PATRICIA D. MILLER, P.E. DESIGN GROUP CHIEF

REVISED AIRPORT LAYOUT PLAN APPROVED
BY LETTER DATED: 3/27/02

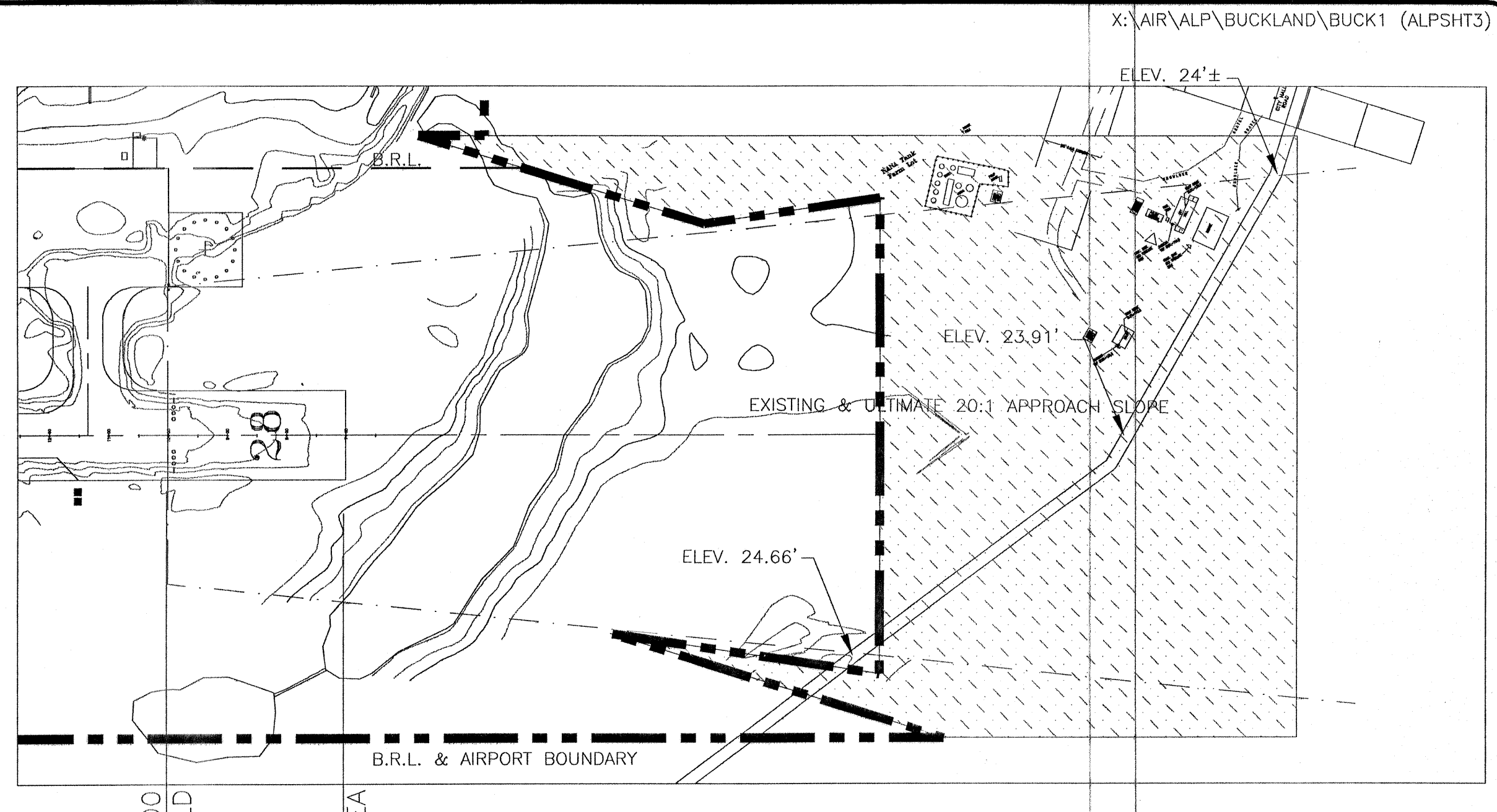
Patricia D. Miller
AIRPORTS DIVISION,
ALASKAN REGION, AAL-620
AIRSPACE REVIEW #145AAL-095NRA

BUCKLAND AIRPORT
TERMINAL PLAN

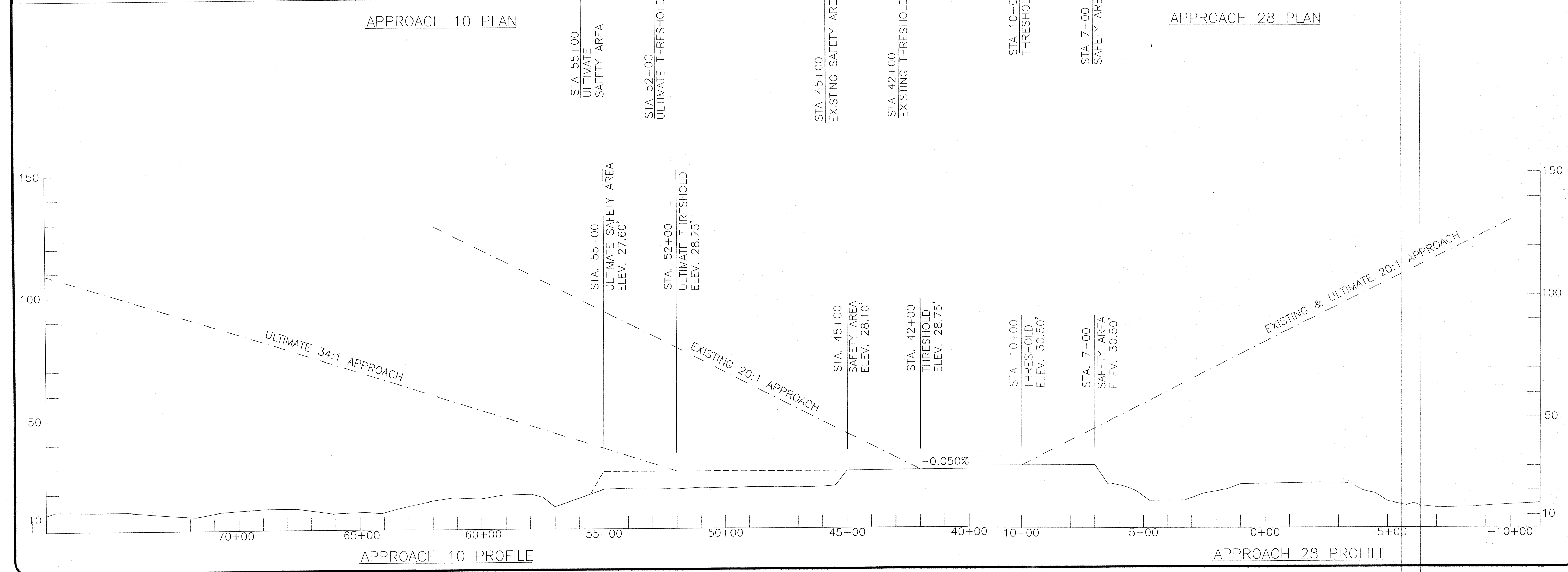
SHEET
2
OF
4



APPROACH 10 PLAN



APPROACH 28 PLAN



DESIGN	ACU	
DRAWN	CAT	
CHECKED	PKS	
BY	DATE	REVISIONS

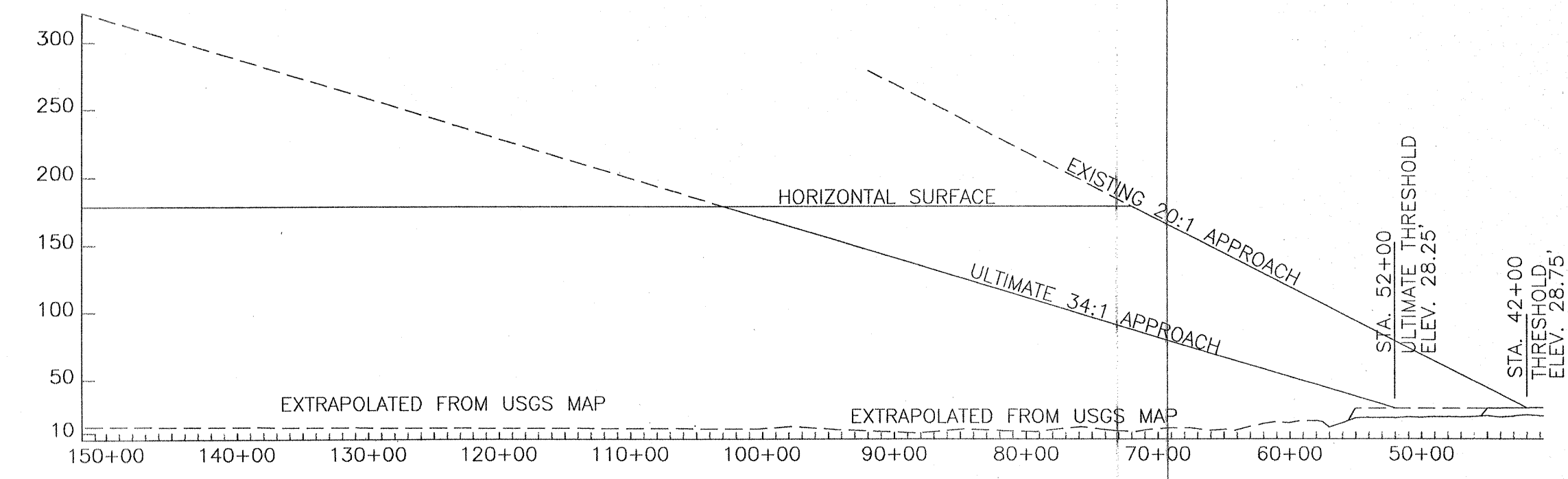
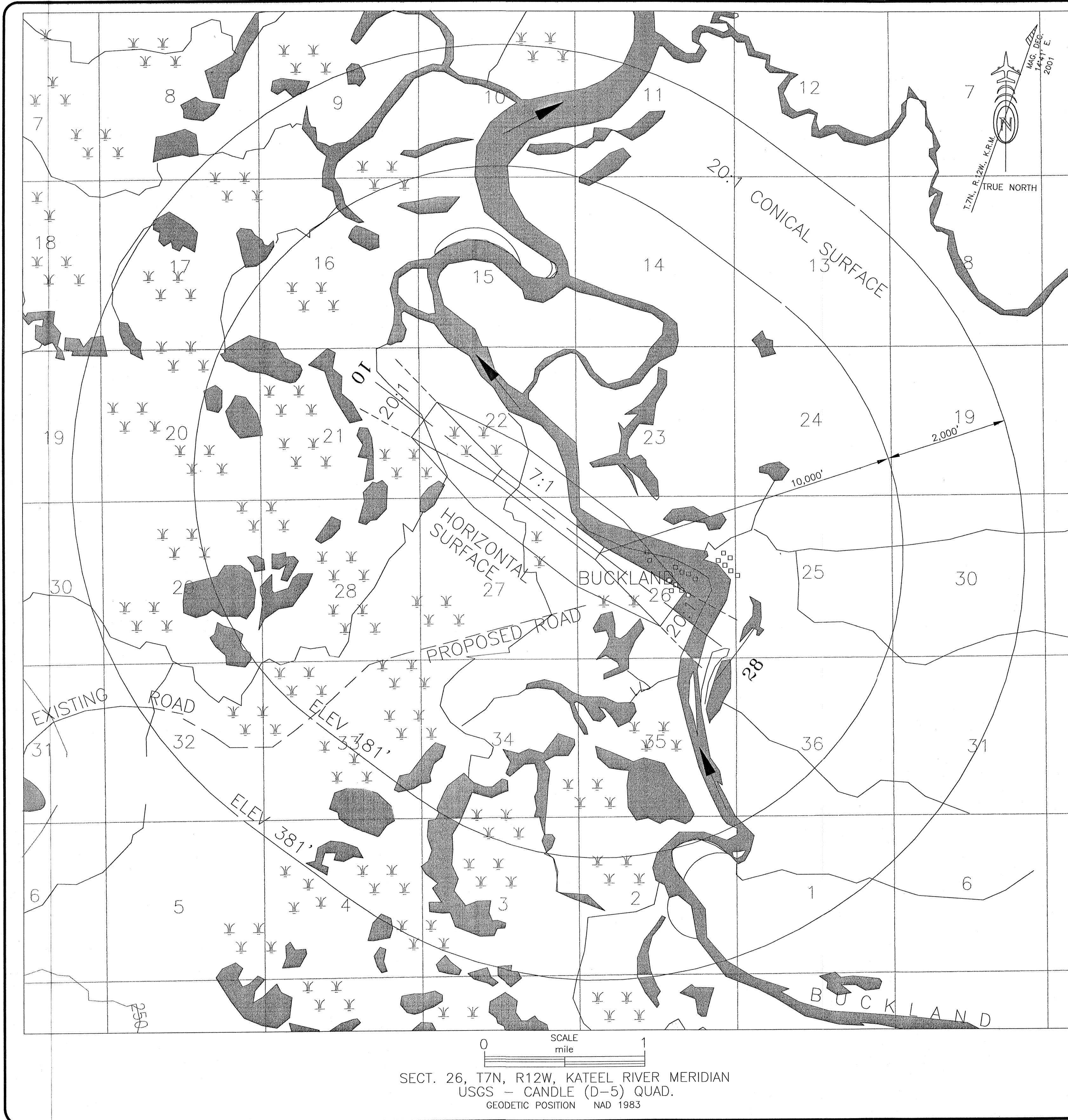
STATE OF ALASKA
DEPARTMENT OF TRANSPORTATION AND PUBLIC FACILITIES
NORTHERN REGION-WESTERN DISTRICT-DESIGN & ENGINEERING SERVICES

APPROVED: *Patricia D. Miller* DATE: 3/18/02
PATRICIA D. MILLER, P.E. DESIGN GROUP CHIEF

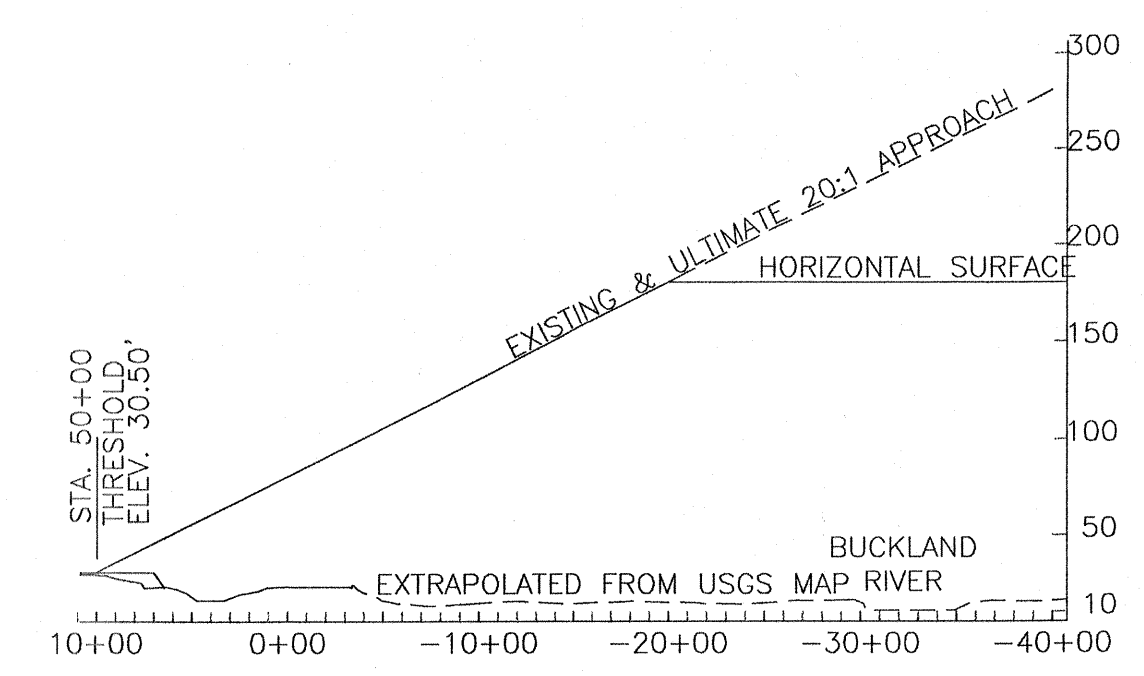
REVISED AIRPORT LAYOUT PLAN APPROVED
BY LETTER DATED: 3/27/02

Paul Qui
AIRPORTS DIVISION,
ALASKAN REGION, AAL-620
AIRSPACE REVIEW #145AAL-095NRA

BUCKLAND AIRPORT
INNER PORTION OF THE APPROACH
SURFACE PLAN & PROFILE



APPROACH 10 COMPOSITE PROFILE



APPROACH 28 COMPOSITE PROFILE

DESIGN	ACU			
DRAWN	CAT			
CHECKED	PKS			
BY	DATE		REVISIONS	

STATE OF ALASKA
 DEPARTMENT OF TRANSPORTATION AND PUBLIC FACILITIES
 NORTHERN REGION-WESTERN DISTRICT-DESIGN & ENGINEERING SERVICES

APPROVED *Patricia D. Miller* DATE 3/15/02
 PATRICIA D. MILLER, P.E. DESIGN GROUP CHIEF

REVISED AIRPORT LAYOUT PLAN APPROVED
 BY LETTER DATED: 3/27/02
Patricia D. Miller
 AIRPORTS DIVISION,
 ALASKAN REGION, AAL-620
 AIRSPACE REVIEW #145AAL-095NRA

BUCKLAND AIRPORT
 AIRSPACE AND
 COMPOSITE APPROACH PROFILES