



U.S. Department
of Transportation
**Federal Aviation
Administration**

Alaskan Region Airports Division

222 W. 7th Avenue, #14
Anchorage, Alaska 99513-7587
Tel. (907) 271-5438 / Fax (907) 271-2851

January 12, 2023

Tadd Isaacson, P.E.
ADOT&PF Aviation Design
4111 Aviation Ave
Anchorage, AK 99519-6900

Dear Mr. Isaacson:

**Homer Airport
Homer, Alaska
As-Built Airport Layout Plan (November 2022)
(Original ALP Airspace # 2022-AAL-148-NRA)**

We have completed our review of the Homer Airport As-Built Airport Layout Plan (ALP) dated November 2022, and find it acceptable for documenting the existing conditions of the airport.

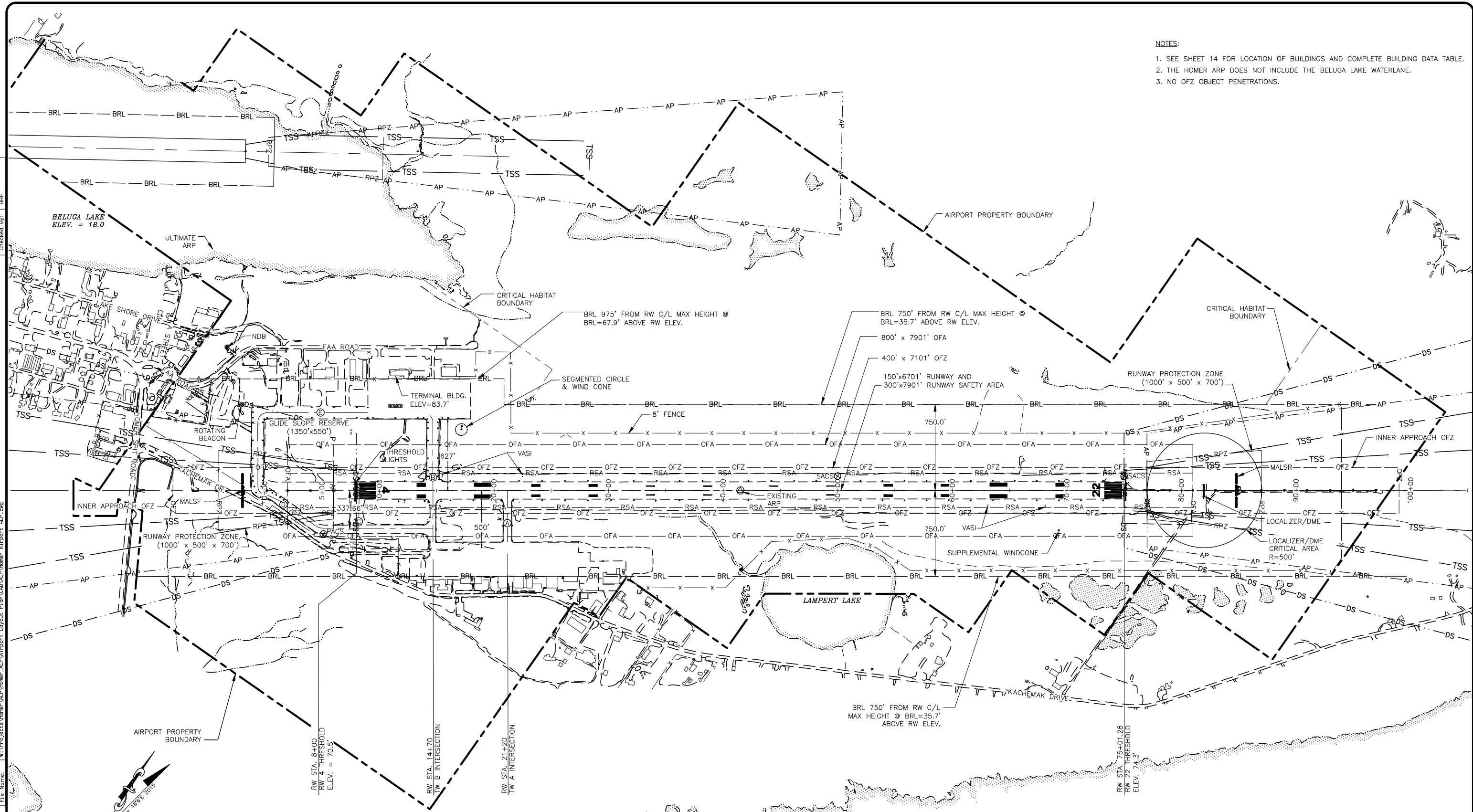
Please retain this letter in your files for future reference.

Sincerely,

Pat Zettler, P.E., Lead Engineer
Airports Division

- NOTES:
- SEE SHEET 14 FOR LOCATION OF BUILDINGS AND COMPLETE BUILDING DATA TABLE.
 - THE HOMER ARP DOES NOT INCLUDE THE BELUGA LAKE WATERLANE.
 - NO OFZ OBJECT PENETRATIONS.

Date Plotted: 12/05/2022, 1:32 PM
 Layout Name: 4 EXST
 File Name: W:\Projects\Homer\ALP\Homer_Airport_Layout_Plan\CAD\ALP\Homer_Airport_ALP.dwg
 Designed By: CCW
 Drawn By: CJA
 Checked By: BRH



NO.	DATE	REVISION
1	11/29/2016	INITIAL DESIGN
2	09/27/2016	UPDATE
3	11/2022	UPDATED ALP
4	09/27/2016	RUNWAY LENGTH AND THRESHOLD STATIONING

**STATE OF ALASKA
DEPARTMENT OF TRANSPORTATION
AND PUBLIC FACILITIES
CENTRAL REGION**

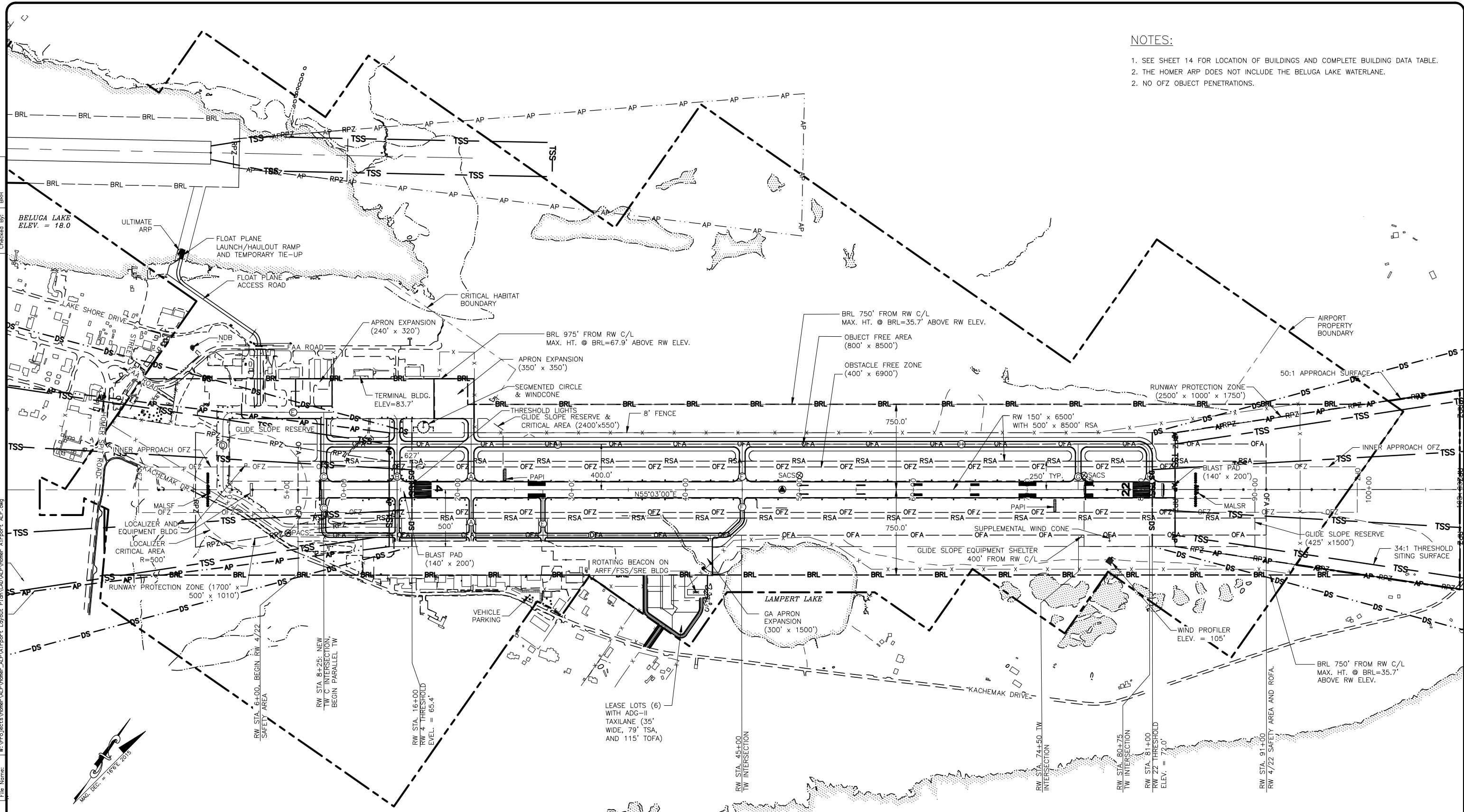
HOMER AIRPORT
HOMER, ALASKA
AIRPORT LAYOUT PLAN

EXISTING LAYOUT

DATE: 11/29/2016
SHEET: 4 OF 18

Date Plotted: 12/05/2022, 1:32 PM
 Layout Name: 5_ALP
 File Name: W:\Projects\Homer\ALP\Homer_ALP_V\Airport_Layout_Plan_V\Homer_Airport_ALP.dwg
 Designer: BZ
 Checker: BRH

NOTES:
 1. SEE SHEET 14 FOR LOCATION OF BUILDINGS AND COMPLETE BUILDING DATA TABLE.
 2. THE HOMER ARP DOES NOT INCLUDE THE BELUGA LAKE WATERLANE.
 2. NO OFZ OBJECT PENETRATIONS.



BY	DATE	REVISION
	11/2022	UPDATED ALP

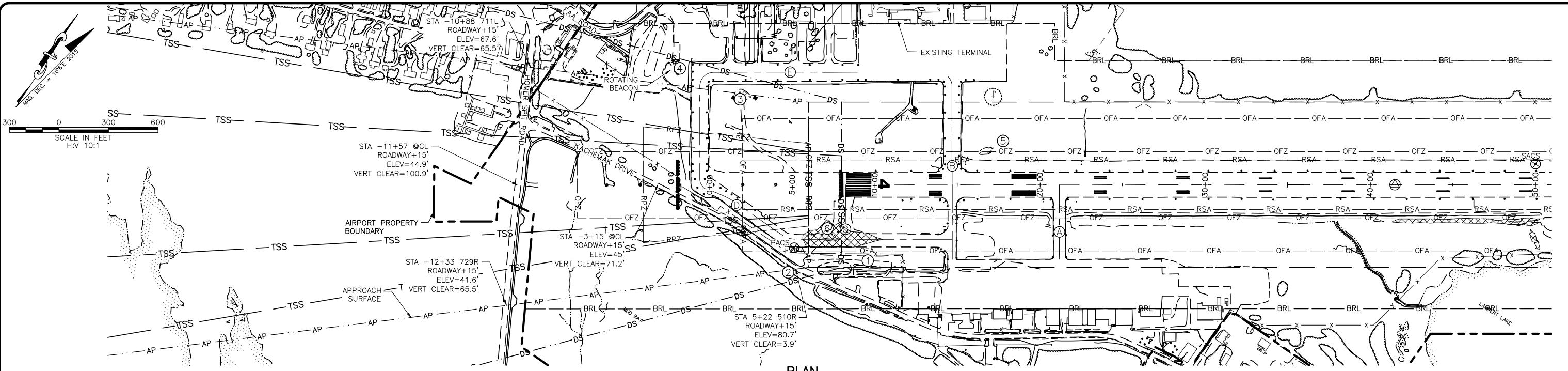
**STATE OF ALASKA
DEPARTMENT OF TRANSPORTATION
AND PUBLIC FACILITIES
CENTRAL REGION**

**HOMER AIRPORT
HOMER, ALASKA
AIRPORT LAYOUT PLAN**

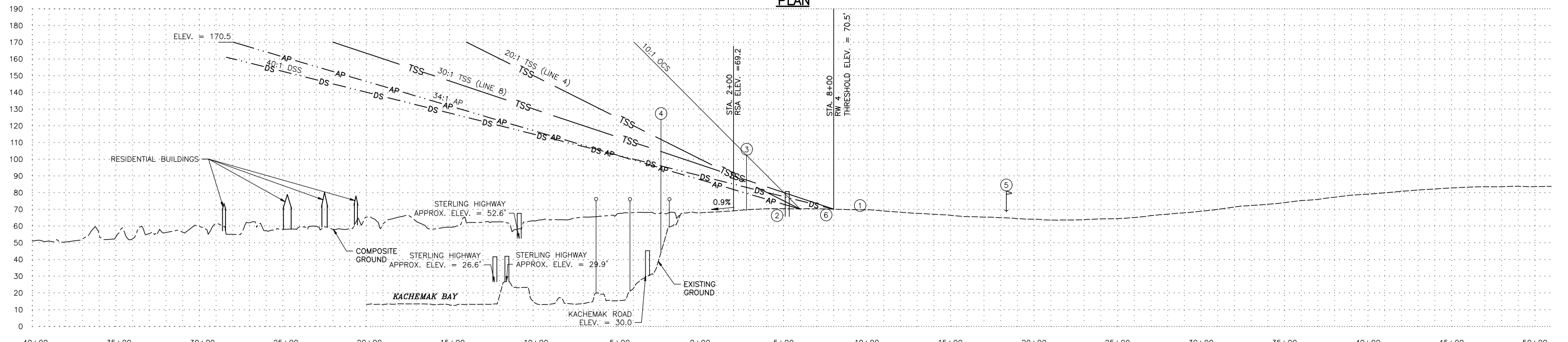
ULTIMATE LAYOUT

DATE: 11/29/2016
 SHEET: 5 OF 18

Date Plotted: 11/29/2016 1:50 PM
 Layout Name: 6 EX APPR R4
 File Name: W:\Projects\Homer\ALP\Report Layout\Plan\CAD\ALP\Homer_ALP\Report_ALP.dwg
 Designed By: CSW
 Drawn By: CIA
 Checked By: BRH



PLAN



PROFILE

PART 77 SURFACE OBSTRUCTIONS

ID #	DESCRIPTION	STATION/OFFSET	GRD ELEV	AGL	TOP ELEV	SURFACE PENETRATED	SURFACE ELEV	AMOUNT PENETRATION	TRIGGER EVENT	DISPOSITION	STAGE TO CORRECT
1	FENCE	9+58 , 420R	71.0'	8.0'	79.0'	PRIMARY	70.5'	8.5'	N/A	TO REMAIN	N/A
2	ROAD +15'	5+36 , 508R	65.7'	15.0'	80.7'	APPROACH	72.4'	8.3'	N/A	TO REMAIN	N/A
3	ANTENNA	2+78 , 520L	70.1'	32.3'	102.4'	APPROACH	80.0'	22.4'	N/A	OBSTRUCTION LIGHT	N/A
4	ROTATING BEACON	-2.35 , 700L	69.7'	52.2'	121.9'	TRANSITIONAL	115.6'	6.3'	N/A	TO REMAIN	N/A
5	WINDCONE	2+78 , 520L	59.3'	20.8'	80.1'	PRIMARY	74.3'	5.8'	N/A	TO BE REMOVED	N/A
6	TERRAIN	7+58 , 327R	72.1'		72.1'	PRIMARY	71.0'	1.1'	N/A	TO REMAIN	N/A

DEPARTURE SITING SURFACE OBSTACLES (RUNWAY 22)

ID #	DESCRIPTION	STATION/OFFSET	GRD ELEV	AGL	TOP ELEV	SURFACE PENETRATED	SURFACE ELEV	AMOUNT PENETRATION	TRIGGER EVENT	DISPOSITION	STAGE TO CORRECT
1	FENCE	8+00 , 418R	70.5'	8.0'	78.5'	DEPARTURE	70.5'	8.0'	N/A	TO REMAIN	N/A
2	ROAD +15'	5+36 , 508R	65.7'		80.7'	DEPARTURE	77.1'	3.6'	N/A	TO REMAIN	N/A
3	ANTENNA	2+78 , 520L	70.1'	32.3'	102.4'	DEPARTURE	83.6'	19.2'	N/A	OBSTRUCTION LIGHT	N/A
6	TERRAIN	7+58 , 327R	72.1'		72.1'	DEPARTURE	71.2'	0.9'	N/A	TO REMAIN	N/A

NOTES:

- 34:1 EXISTING APPROACH SURFACE IS PENETRATED 22.4' BY OBSTRUCTION #3 (ANTENNA), THEREFORE EXISTING OBSTRUCTION CLEARANCE SLOPE IS 10:1.
- THE CONTROLLING OBSTRUCTION FOR RUNWAY 4 IS AN ANTENNA AT STA 2+78 520'L, ELEVATION 102.4'. THE OBSTRUCTION CLEARANCE SLOPE IS ESTABLISHED AS 10:1 PER FAA AC 150/5200-35A, CHAPTER 4, DATA ELEMENT NUMBER 57.
- THERE ARE NO OBJECT PENETRATIONS IN THE RUNWAY APPROACH END SITING SURFACE OF RUNWAY 4, AS DEFINED IN FAA AC 150/5300-13A, CHANGE 1, CHAPTER 3, TABLE 3-2, LINE 8.
- THERE ARE NO OBJECT PENETRATIONS IN THE RUNWAY APPROACH END SITING SURFACE OF RUNWAY 4, AS DEFINED IN FAA AC 150/5300-13A, CHANGE 1, CHAPTER 3, TABLE 3-2, LINE 4.

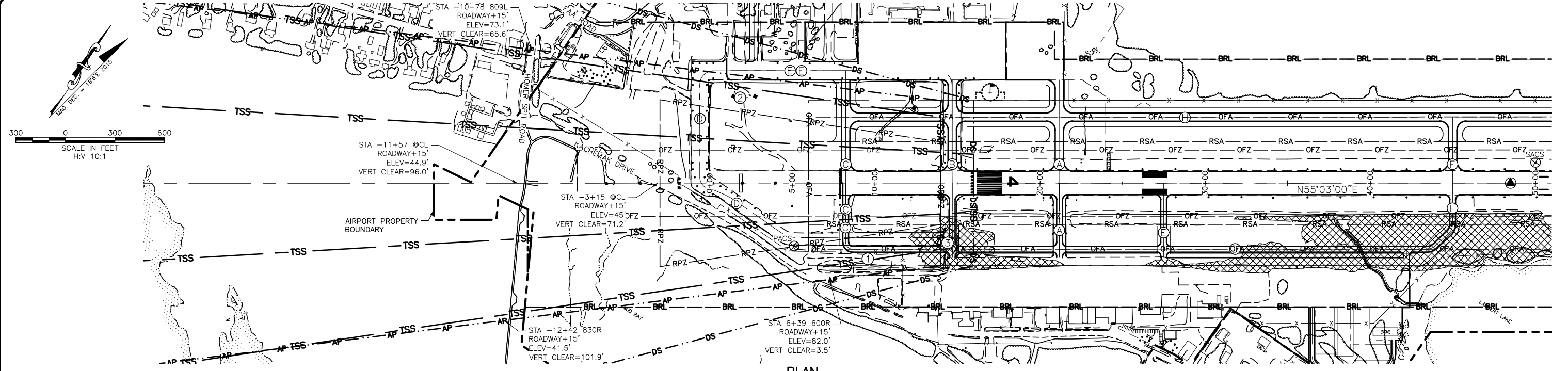
BY	DATE	REVISION
	11/2022	UPDATED ALP

STATE OF ALASKA
DEPARTMENT OF TRANSPORTATION
AND PUBLIC FACILITIES
CENTRAL REGION

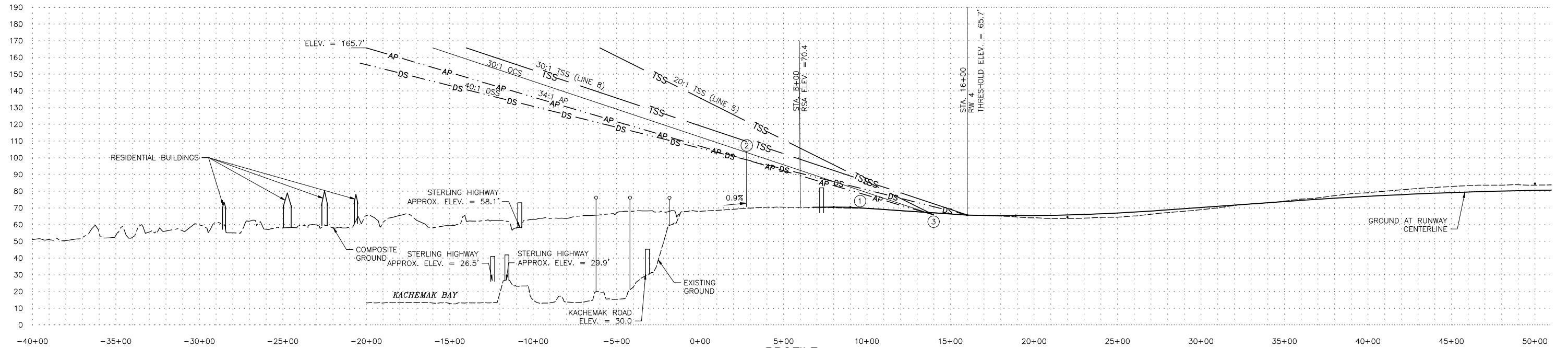
HOMER AIRPORT
 HOMER, ALASKA
 AIRPORT LAYOUT PLAN
 RUNWAY 4
 EXISTING INNER APPROACH
 SURFACE PLAN AND PROFILE

DATE: 11/29/2016
 SHEET: 6 OF 18

Date Plotted: 12/05/2022 1:32 PM
 Layout Name: W:\Projects\Homer\ALP\Report_Layout\Plan\CD\ALP\Homer_Airport_ALP.dwg
 File Name:
 Designed By: CSW
 Drawn By: CIA
 Checked By: BRH



PLAN



PROFILE

PART 77 SURFACE OBSTRUCTIONS

ID #	DESCRIPTION	STATION/OFFSET	GRD ELEV	AGL	TOP ELEV	SURFACE PENETRATED	SURFACE ELEV	AMOUNT PENETRATION	TRIGGER EVENT	DISPOSITION	STAGE TO CORRECT
1	FENCE	9+58 , 420R	71.0'	8.0'	79.0'	APPROACH	78.7'	0.3'	N/A	TO REMAIN	N/A
2	ANTENNA	2+78 , 520L	70.1'	32.3'	102.4'	APPROACH	98.8'	3.6'	N/A	OBSTRUCTION LIGHT	N/A
3	TERRAIN	13+98 , 330R	70.0'		70.0'	APPROACH	65.8'	4.2'	N/A	TO BE REMOVED	N/A

DEPARTURE SITING SURFACE OBSTACLES (RUNWAY 22)

ID #	DESCRIPTION	STATION/OFFSET	GRD ELEV	AGL	TOP ELEV	SURFACE PENETRATED	SURFACE ELEV	AMOUNT PENETRATION	TRIGGER EVENT	DISPOSITION	STAGE TO CORRECT
2	ANTENNA	2+78 , 520L	70.1'	32.3'	102.4'	DEPARTURE	98.8'	3.6'	N/A	OBSTRUCTION LIGHT	N/A
3	TERRAIN	13+98 , 330R	70.0'		70.0'	DEPARTURE	71.2'	0.9'	N/A	TO REMAIN	N/A

APPROACH SITING SURFACE OBSTACLES (RUNWAY 4)

ID #	DESCRIPTION	STATION/OFFSET	GRD ELEV	AGL	TOP ELEV	SURFACE PENETRATED	SURFACE ELEV	AMOUNT PENETRATION	TRIGGER EVENT	DISPOSITION	STAGE TO CORRECT
1	FENCE	11+77 , 433R	69.7'	8.0'	77.7'	LINE 5 APPROACH	76.9'	0.8'	N/A	TO REMAIN	N/A
3	TERRAIN	13+98 , 330R	70.0'		70.0'	LINE 5 APPROACH	65.8'	4.2'	N/A	TO BE REMOVED	N/A

NOTES:

- 34:1 ULTIMATE APPROACH SURFACE IS PENETRATED 3.6' BY OBSTRUCTION #2 (ANTENNA), THEREFORE ULTIMATE OBSTRUCTION CLEARANCE SLOPE IS 30:1.
- THE CONTROLLING OBSTRUCTION FOR RUNWAY 4 IS AN ANTENNA AT STA 2+78 520'L, ELEVATION 102.4'. THE OBSTRUCTION CLEARANCE SLOPE IS ESTABLISHED AS 30:1 PER FAA AC 150/5200-35A, CHAPTER 4, DATA ELEMENT NUMBER 57.
- THERE ARE NO OBJECT PENETRATIONS IN THE RUNWAY APPROACH END SITING SURFACE OF RUNWAY 4, AS DEFINED IN FAA AC 150/5300-13A, CHANGE 1, CHAPTER 3, TABLE 3-2, LINE 8.
- OBJECT PENETRATIONS IN THE RUNWAY APPROACH END SITING SURFACE OF RUNWAY 4, AS DEFINED IN FAA AC 150/5300-13A, CHANGE 1, CHAPTER 3, TABLE 3-2, LINE 5 ARE SHOWN IN THE TABLE.

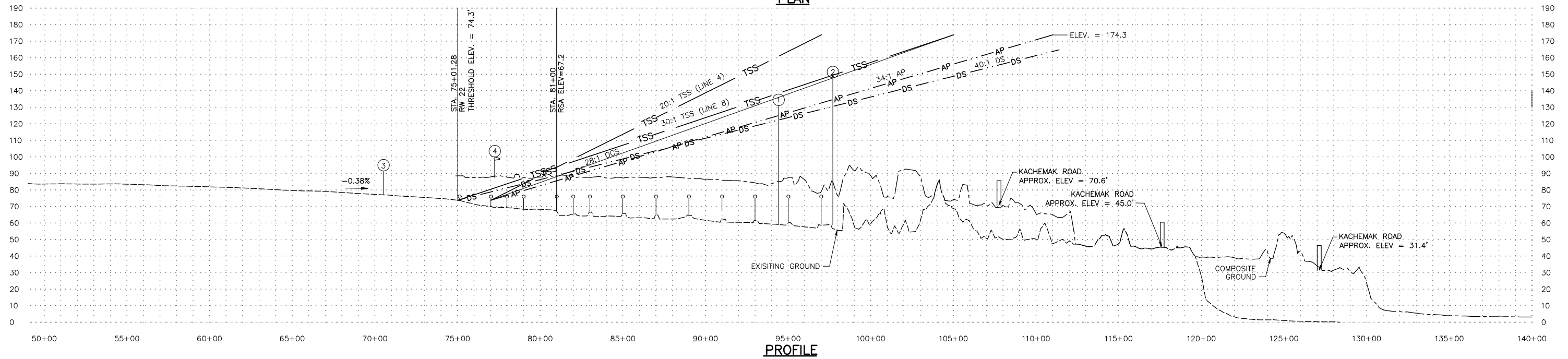
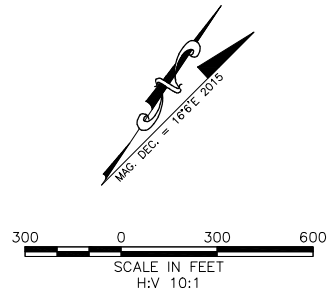
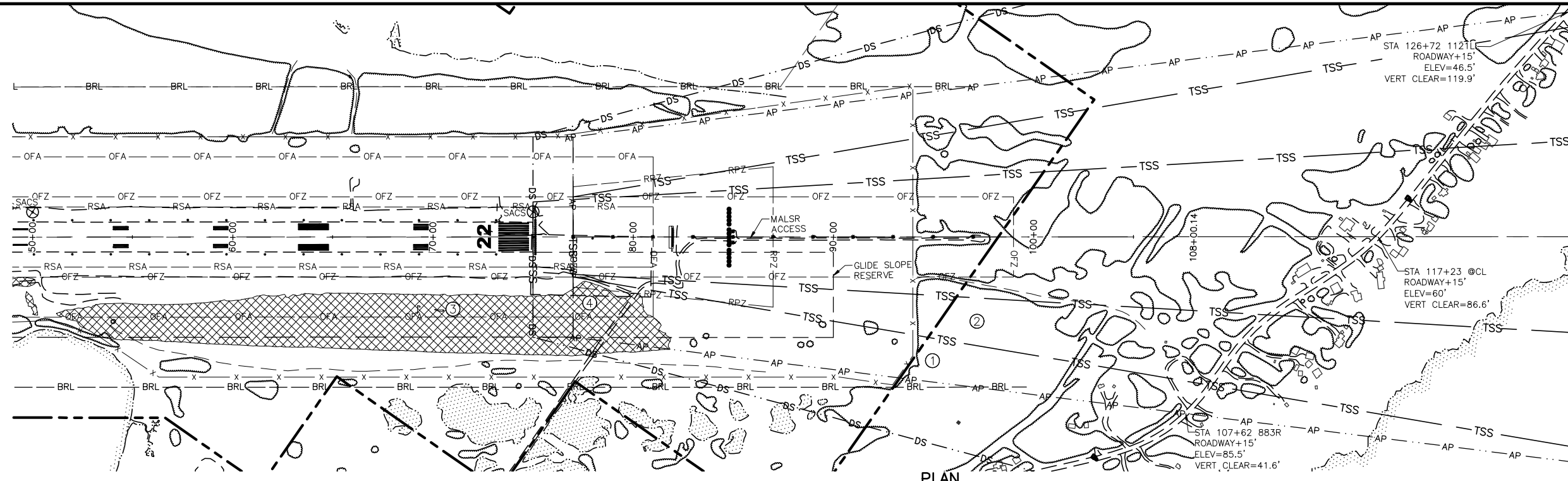
BY	DATE	REVISION
	11/2022	UPDATED ALP

STATE OF ALASKA
DEPARTMENT OF TRANSPORTATION
AND PUBLIC FACILITIES
CENTRAL REGION

HOMER AIRPORT
 HOMER, ALASKA
 AIRPORT LAYOUT PLAN
 RUNWAY 4
 ULTIMATE INNER APPROACH
 SURFACE PLAN AND PROFILE

DATE:
11/29/2016
 SHEET:
7
 OF
18

Date Plotted: 12/05/2016 1:38 PM
 Layout Name: 8 EX APPR R22
 File Name: W:\Projects\Homer\ALP\Homer\ALP\Report\Layout\Plan\ALP.dwg
 Designed By: CCW
 Drawn By: CJA
 Checked By: BRH



ID #	DESCRIPTION	STATION/OFFSET	GRD ELEV	AGL	TOP ELEV	SURFACE PENETRATED	SURFACE ELEV	AMOUNT PENETRATION	TRIGGER EVENT	DISPOSITION	STAGE TO CORRECT
1	TREES	94+41 , 602R	90.3'	40.9'	131.2'	APPROACH	125.5'	5.7'	N/A	TO BE REMOVED	N/A
2	TREES	97+70 , 425R	69.4'	79.1'	148.5'	APPROACH	135.1'	13.4'	N/A	TO BE REMOVED	N/A
3	TERRAIN	70+52 , 367R	93.5'	93.5'	93.5'	PRIMARY	76.5'	17.0'	N/A	TO BE REMOVED	N/A
4	WINDCONE	77+24 , 332R	87.7'	20.0'	107.7'	APPROACH	75.0'	32.7'	N/A	TO BE REMOVED	N/A

ID #	DESCRIPTION	STATION/OFFSET	GRD ELEV	AGL	TOP ELEV	SURFACE PENETRATED	SURFACE ELEV	AMOUNT PENETRATION	TRIGGER EVENT	DISPOSITION	STAGE TO CORRECT
1	TREES	94+41 , 602R	90.3'	40.9'	131.2'	DEPARTURE SITING	122.8'	8.4'	N/A	TO BE REMOVED	N/A
2	TREES	97+70 , 425R	69.4'	79.1'	148.5'	DEPARTURE SITING	131.0'	17.5'	N/A	TO BE REMOVED	N/A
3	TERRAIN	77+00 , 443R	91.5'	91.5'	91.5'	DEPARTURE SITING	74.3'	17.2'	N/A	TO BE REMOVED	N/A
4	WINDCONE	77+24 , 332R	87.7'	20.0'	107.7'	DEPARTURE SITING	79.9'	27.8'	N/A	TO BE REMOVED	N/A

NOTES:

- 34:1 ULTIMATE APPROACH SURFACE IS PENETRATED 13.4' BY OBSTRUCTION #2 (TREES), THEREFORE ULTIMATE OBSTRUCTION CLEARANCE SLOPE IS 28:1.
- THE CONTROLLING OBSTRUCTION FOR RUNWAY 22 IS TREES AT STA 97+70 425'R, ELEVATION 148.5'. THE OBSTRUCTION CLEARANCE SLOPE IS ESTABLISHED AS 28:1 PER FAA AC 150/5200-35A, CHAPTER 4, DATA ELEMENT NUMBER 57.
- THERE ARE NO OBJECT PENETRATIONS IN THE RUNWAY APPROACH END SITING SURFACE OF RUNWAY 22, AS DEFINED IN FAA AC 150/5300-13A, CHANGE 1, CHAPTER 3, TABLE 3-2, LINE 8.
- THERE ARE NO OBJECT PENETRATIONS IN THE RUNWAY APPROACH END SITING SURFACE OF RUNWAY 22, AS DEFINED IN FAA AC 150/5300-13A, CHANGE 1, CHAPTER 3, TABLE 3-2, LINE 4.

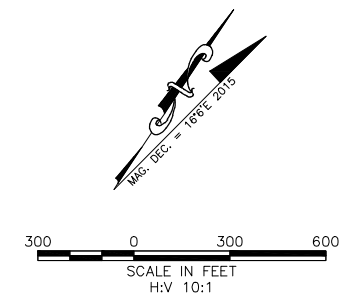
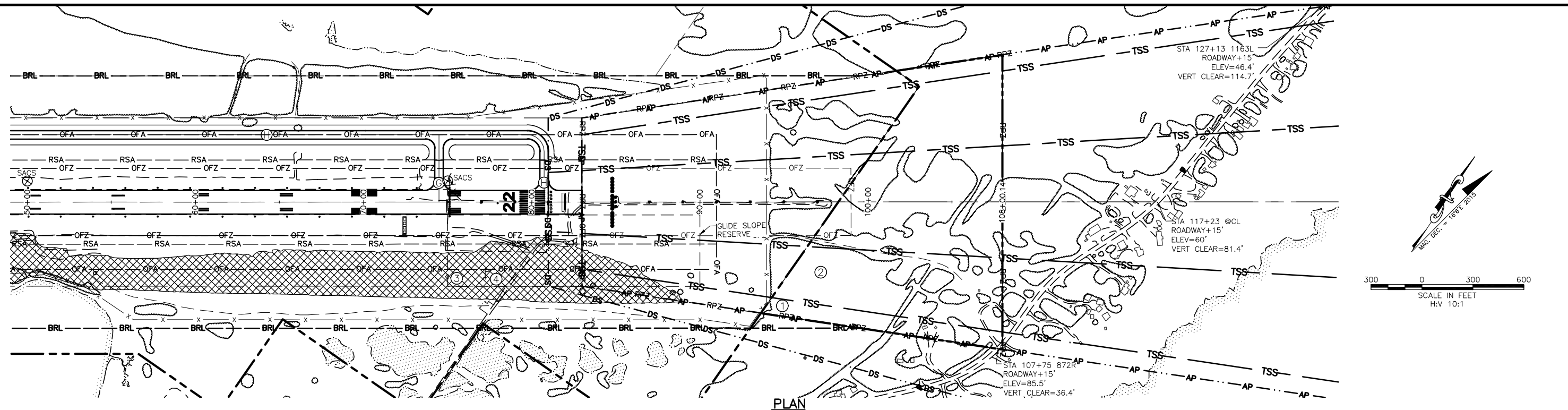
BY	DATE	REVISION

STATE OF ALASKA
DEPARTMENT OF TRANSPORTATION
AND PUBLIC FACILITIES
CENTRAL REGION

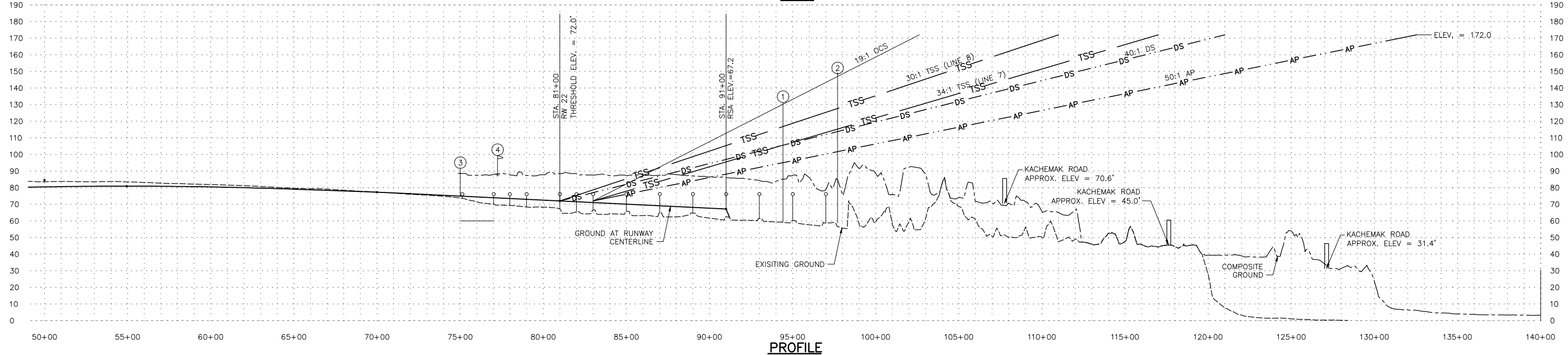
HOMER AIRPORT
 HOMER, ALASKA
 AIRPORT LAYOUT PLAN
 RUNWAY 22
 EXISTING INNER APPROACH
 SURFACE PLAN AND PROFILE

DATE:
11/29/2016
 SHEET:
8 OF
18

Date Plotted: 12/05/2016 1:42 PM
 Project Name: 9. IUT. APR. RW22
 File Name: W:\Projects\Homer\ALPA\Homer_Airport\ALPA\Homer_Airport_ALP.dwg
 Designed By: CGW
 Drawn By: CJA
 Checked By: BRH



PLAN



PROFILE

PART 77 SURFACE OBSTRUCTIONS

ID #	DESCRIPTION	STATION/OFFSET	GRD ELEV	AGL	TOP ELEV	SURFACE PENETRATED	SURFACE ELEV	AMOUNT PENETRATION	TRIGGER EVENT	DISPOSITION	STAGE TO CORRECT
1	TREES	94+41 , 602R	90.3'	40.9'	131.2'	APPROACH	95.0'	36.2'	N/A	TO BE REMOVED	N/A
2	TREES	97+70 , 425R	69.4'	79.1'	148.5'	APPROACH	101.4'	47.1'	N/A	TO BE REMOVED	N/A
3	TERRAIN	75+00 , 442R	91.5'	91.5'	91.5'	PRIMARY	78.3'	13.2'	N/A	TO BE REMOVED	N/A
4	WINDCONE	77+25 , 450R	87.7'	20.0'	107.7'	APPROACH	78.0'	29.7'	N/A	OBSTRUCTION LIGHT	N/A

DEPARTURE SITING SURFACE OBSTACLES (RUNWAY 4)

ID #	DESCRIPTION	STATION/OFFSET	GRD ELEV	AGL	TOP ELEV	SURFACE PENETRATED	SURFACE ELEV	AMOUNT PENETRATION	TRIGGER EVENT	DISPOSITION	STAGE TO CORRECT
1	TREES	94+41 , 602R	90.3'	40.9'	131.2'	DEPARTURE SITING	105.5'	25.7'	N/A	TO BE REMOVED	N/A
2	TREES	97+70 , 425R	69.4'	79.1'	148.5'	DEPARTURE SITING	113.8'	34.7'	N/A	TO BE REMOVED	N/A
3	TERRAIN	81+30 , 498R	88.9'	88.9'	88.9'	DEPARTURE SITING	72.6'	16.3'	N/A	TO BE REMOVED	N/A

APPROACH SITING SURFACE OBSTACLES (RUNWAY 22)

ID #	DESCRIPTION	STATION/OFFSET	GRD ELEV	AGL	TOP ELEV	SURFACE PENETRATED	SURFACE ELEV	AMOUNT PENETRATION	TRIGGER EVENT	DISPOSITION	STAGE TO CORRECT
1	TREES	94+41 , 602R	90.3'	40.9'	131.2'	LINE 7 APPROACH	105.6'	25.6'	N/A	TO BE REMOVED	N/A
2	TREES	97+70 , 425R	69.4'	79.1'	148.5'	LINE 7 APPROACH	115.3'	33.2'	N/A	TO BE REMOVED	N/A
3	TERRAIN	83+00 , 400R	85.7'	85.7'	85.7'	LINE 7 APPROACH	72.0'	13.7'	N/A	TO BE REMOVED	N/A

NOTES:

- 50:1 ULTIMATE APPROACH SURFACE IS PENETRATED 47.1' BY OBSTRUCTION #2 (TREES), THEREFORE ULTIMATE OBSTRUCTION CLEARANCE SLOPE IS 19:1.
- THE CONTROLLING OBSTRUCTION FOR RUNWAY 22 IS TREES AT STA 97+70 425'R, ELEVATION 148.5'. THE OBSTRUCTION CLEARANCE SLOPE IS ESTABLISHED AS 19:1 PER FAA AC 150/5200-35A, CHAPTER 4, DATA ELEMENT NUMBER 57.
- THERE ARE NO OBJECT PENETRATIONS IN THE RUNWAY APPROACH END SITING SURFACE OF RUNWAY 22, AS DEFINED IN FAA AC 150/5300-13A, CHANGE 1, CHAPTER 3, TABLE 3-2, LINE 8.
- OBJECT PENETRATIONS IN THE RUNWAY APPROACH END SITING SURFACE OF RUNWAY 22, AS DEFINED IN FAA AC 150/5300-13A, CHANGE 1, CHAPTER 3, TABLE 3-2, LINE 5 ARE SHOWN IN THE TABLE.

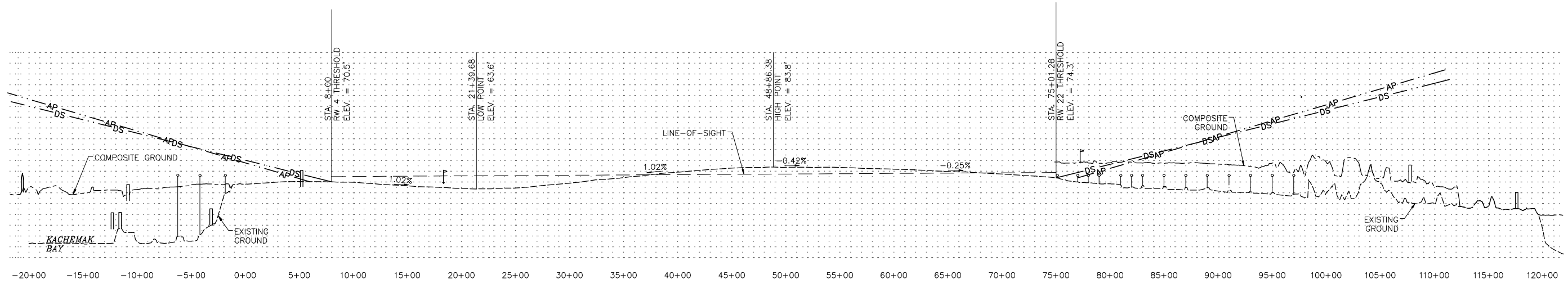
BY	DATE	REVISION
	11/2016	UPDATED ALP

STATE OF ALASKA
DEPARTMENT OF TRANSPORTATION
AND PUBLIC FACILITIES
CENTRAL REGION

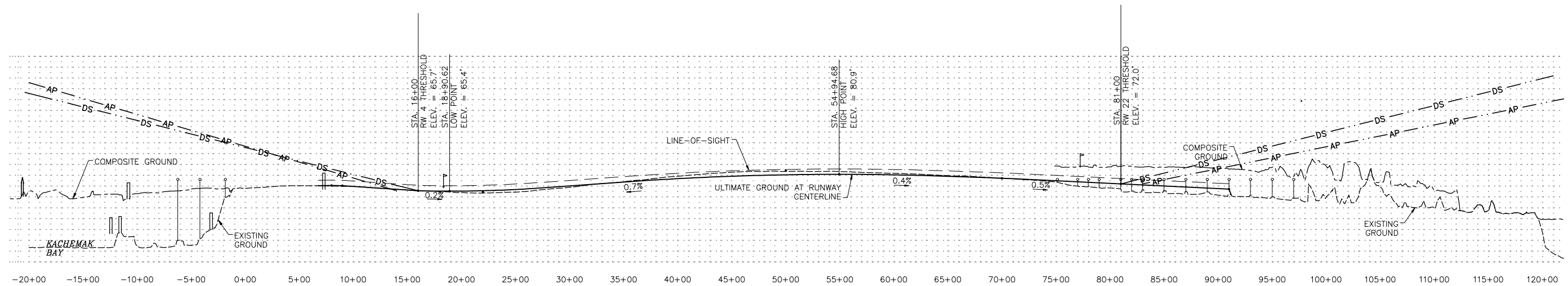
HOMER AIRPORT
 HOMER, ALASKA
 AIRPORT LAYOUT PLAN
 RUNWAY 22
 ULTIMATE INNER APPROACH
 SURFACE PLAN AND PROFILE

DATE: 11/29/2016
 SHEET: 9 OF 18

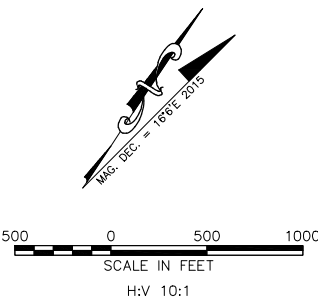
Date: 11/29/2016 1:33 PM
 User: JMD
 File Name: W:\Projects\Homer\ALP\Homer_Airport_Layout_Plan\CAD\ALP\Homer_Airport_ALP.dwg
 Designed By: JMD
 Drawn By: JMD
 Checked By: BRH



EXISTING PROFILE



ULTIMATE PROFILE



BY	DATE	REVISION
DOWL	09/27/2016	UPDATE

STATE OF ALASKA
DEPARTMENT OF TRANSPORTATION
AND PUBLIC FACILITIES
CENTRAL REGION

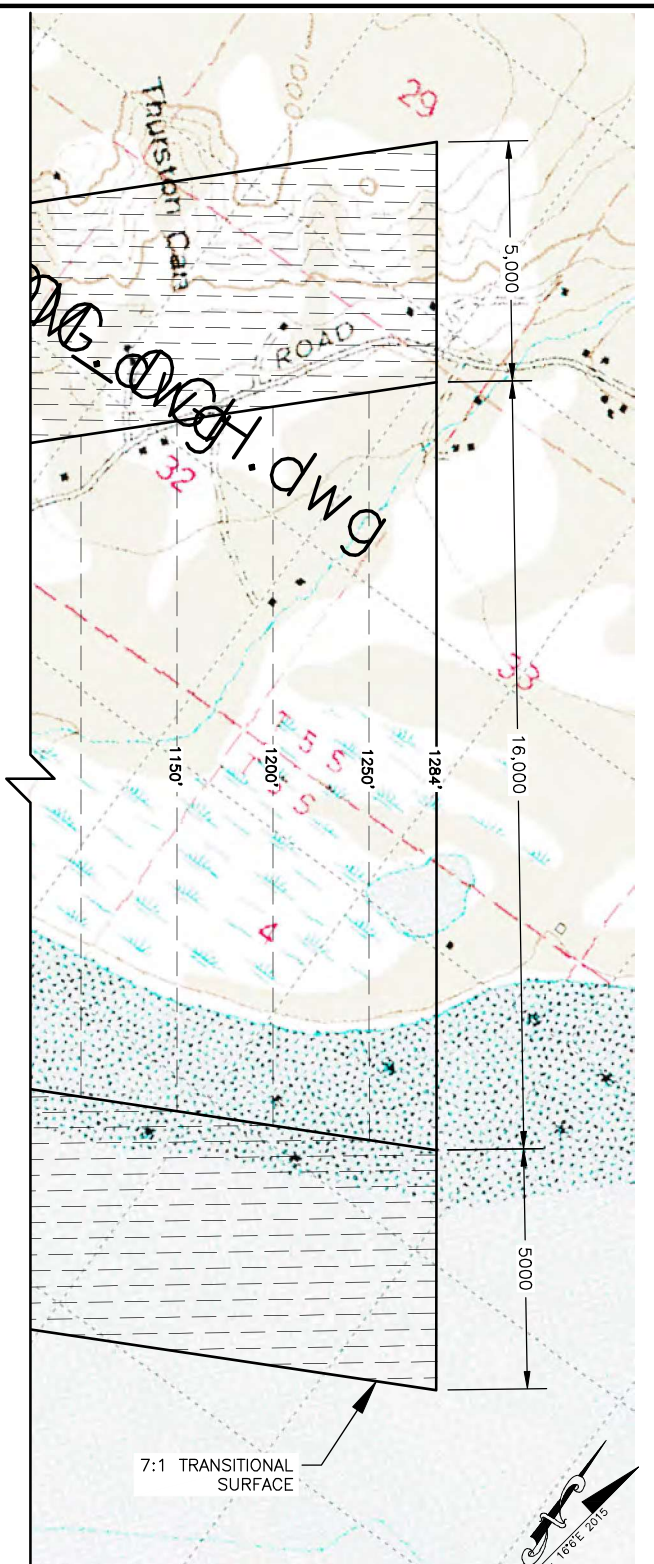
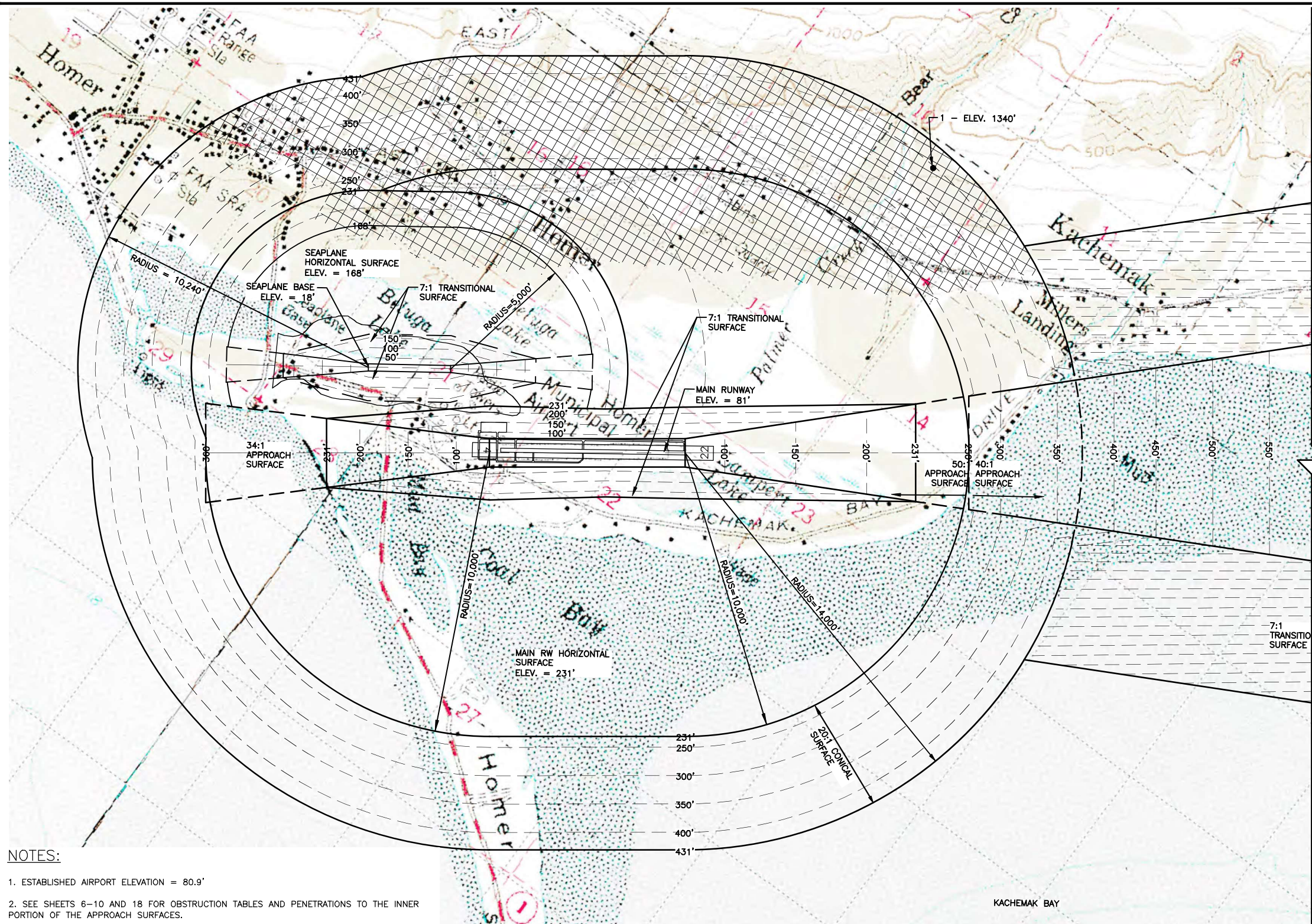
HOMER AIRPORT
 HOMER, ALASKA
 AIRPORT LAYOUT PLAN

 RUNWAY 4-22
 PROFILE

DATE: 11/29/2016
SHEET: 10 OF 18

11/2022 UPDATED ALP
09/27/2016 RUNWAY LENGTH AND THRESHOLD STATIONING UPDATE

Date: 11/29/2016 1:33 PM
 Drawn By: CCW
 Checked By: CJA
 File Name: \\Projects\Homer\ALP\ALP\Homer_Airport\ALP.dwg
 Layout Name: 11_PART77_2



- NOTES:**
1. ESTABLISHED AIRPORT ELEVATION = 80.9'
 2. SEE SHEETS 6-10 AND 18 FOR OBSTRUCTION TABLES AND PENETRATIONS TO THE INNER PORTION OF THE APPROACH SURFACES.
 3. CLOSE IN OBSTRUCTIONS ARE SHOWN ON INNER APPROACH SURFACE SHEETS.
 4. PRIMARY SURFACE WIDTH = 1000'.

LEGEND

AIRSPACE PENETRATION



PART 77 SURFACE OBSTRUCTIONS CONTINUED											
ID #	DESCRIPTION	STATION/OFFSET	GRD ELEV	AGL	TOP ELEV	SURFACE PENETRATED	SURFACE ELEV	AMOUNT PENETRATION	TRIGGER EVENT	DISPOSITION	STAGE TO CORRECT
1	TERRAIN	171+00/10,090L	1340'			CONICAL	400'	940'		TO REMAIN	

BY	DATE	REVISION

STATE OF ALASKA
DEPARTMENT OF TRANSPORTATION
AND PUBLIC FACILITIES
CENTRAL REGION

HOMER AIRPORT
 HOMER, ALASKA
 AIRPORT LAYOUT PLAN
 AIRPORT AIRSPACE
 F.A.R. PART 77 IMAGINARY SURFACE

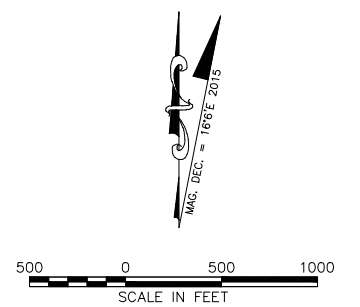
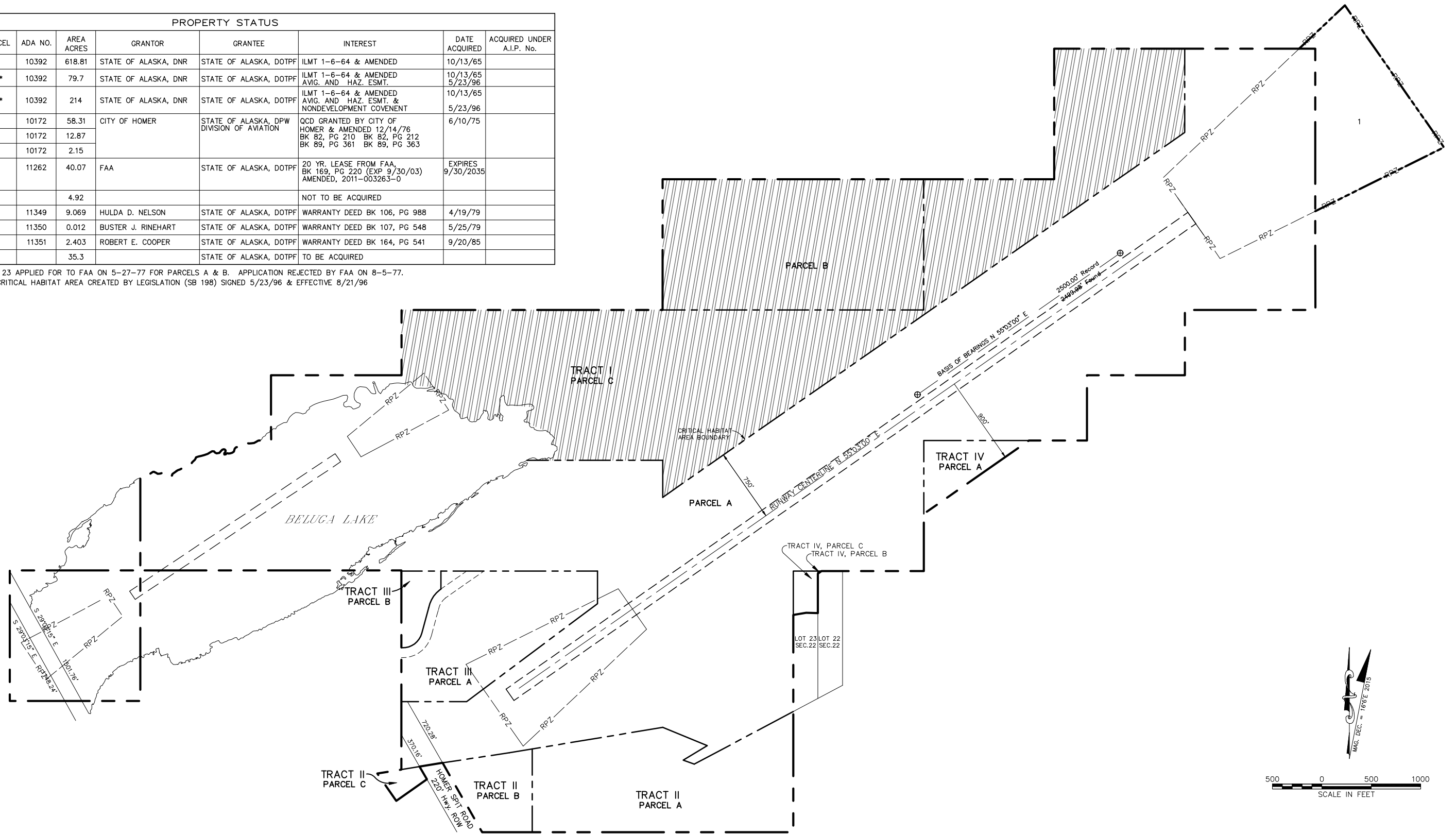
DATE: 11/29/2016
 SHEET: 11 OF 18

11/2022 UPDATED ALP
 DOWL 09/27/2016 WATERLANE LENGTH UPDATE

Date Plotted: 12/05/2022, 1:33 PM
 Layout Name: 13 ALP
 File Name: W:\Projects\Homer\ALP\Homer_ALP\Report Layout Plan\CAD\ALP\Homer_ALP\Report_ALP.dwg
 Designed By: CGW
 Drawn By: CIA
 Checked By: BRH

PROPERTY STATUS								
TRACT	PARCEL	ADA NO.	AREA ACRES	GRANTOR	GRANTEE	INTEREST	DATE ACQUIRED	ACQUIRED UNDER A.I.P. No.
TRACT I	A	10392	618.81	STATE OF ALASKA, DNR	STATE OF ALASKA, DOTPF	ILMT 1-6-64 & AMENDED	10/13/65	
TRACT I	B**	10392	79.7	STATE OF ALASKA, DNR	STATE OF ALASKA, DOTPF	ILMT 1-6-64 & AMENDED AVIG. AND HAZ. ESMT.	10/13/65 5/23/96	
TRACT I	C**	10392	214	STATE OF ALASKA, DNR	STATE OF ALASKA, DOTPF	ILMT 1-6-64 & AMENDED AVIG. AND HAZ. ESMT. & NONDEVELOPMENT COVENANT	10/13/65 5/23/96	
TRACT II	A	10172	58.31	CITY OF HOMER	STATE OF ALASKA, DPW DIVISION OF AVIATION	OCD GRANTED BY CITY OF HOMER & AMENDED 12/14/76 BK 82, PG 210 BK 82, PG 212 BK 89, PG 361 BK 89, PG 363	6/10/75	
TRACT II	B	10172	12.87					
TRACT II	C	10172	2.15					
TRACT III*	A	11262	40.07	FAA	STATE OF ALASKA, DOTPF	20 YR. LEASE FROM FAA, BK 169, PG 220 (EXP 9/30/03) AMENDED, 2011-003263-0	EXPIRES 9/30/2035	
TRACT III*	B		4.92			NOT TO BE ACQUIRED		
TRACT IV	A	11349	9.069	HULDA D. NELSON	STATE OF ALASKA, DOTPF	WARRANTY DEED BK 106, PG 988	4/19/79	
TRACT IV	B	11350	0.012	BUSTER J. RINEHART	STATE OF ALASKA, DOTPF	WARRANTY DEED BK 107, PG 548	5/25/79	
TRACT IV	C	11351	2.403	ROBERT E. COOPER	STATE OF ALASKA, DOTPF	WARRANTY DEED BK 164, PG 541	9/20/85	
1			35.3		STATE OF ALASKA, DOTPF	TO BE ACQUIRED		

* SECTION 23 APPLIED FOR TO FAA ON 5-27-77 FOR PARCELS A & B. APPLICATION REJECTED BY FAA ON 8-5-77.
 ** HOMER CRITICAL HABITAT AREA CREATED BY LEGISLATION (SB 198) SIGNED 5/23/96 & EFFECTIVE 8/21/96



LEGEND

⊕ Found Primary Monument

1320' Record Dimension, See Note 1

(ADA) Record Dimension, See Note 2

— Airport Property Boundary

--- Parcel Boundary

—— Ultimate Airport Property Boundary

▨ Critical Habitat Area

- NOTES**
1. The information used to prepare this Property Plan drawing is from "State of Alaska, Department of Public Works, Division of Aviation, Homer Airport, Property Plan, Tracts I, III & IV, Dated 11/5/76. No current boundary survey was performed for the preparation of this Property Plan.
 2. Grid bearings and distances from "State of Alaska, Department of Public Works, Division of Aviation, Homer Airport, Property Plan, Tracts I, III & IV, Dated 11/5/76.
 3. The Beluga Lake shore line shown is based on aerial photography acquired May 17, 2002.
 4. Section 23 applied for to FAA on 5-27-77 for Parcels A & B. Application rejected by FAA on 8-5-77.

This property plan supersedes Homer Airport Property Plan dated 2/9/66, Rev. 7/24/67.

BY	DATE	REVISION
	11/2022	UPDATED ALP
	09/27/2016	WATERLANE LENGTH UPDATE

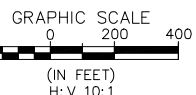
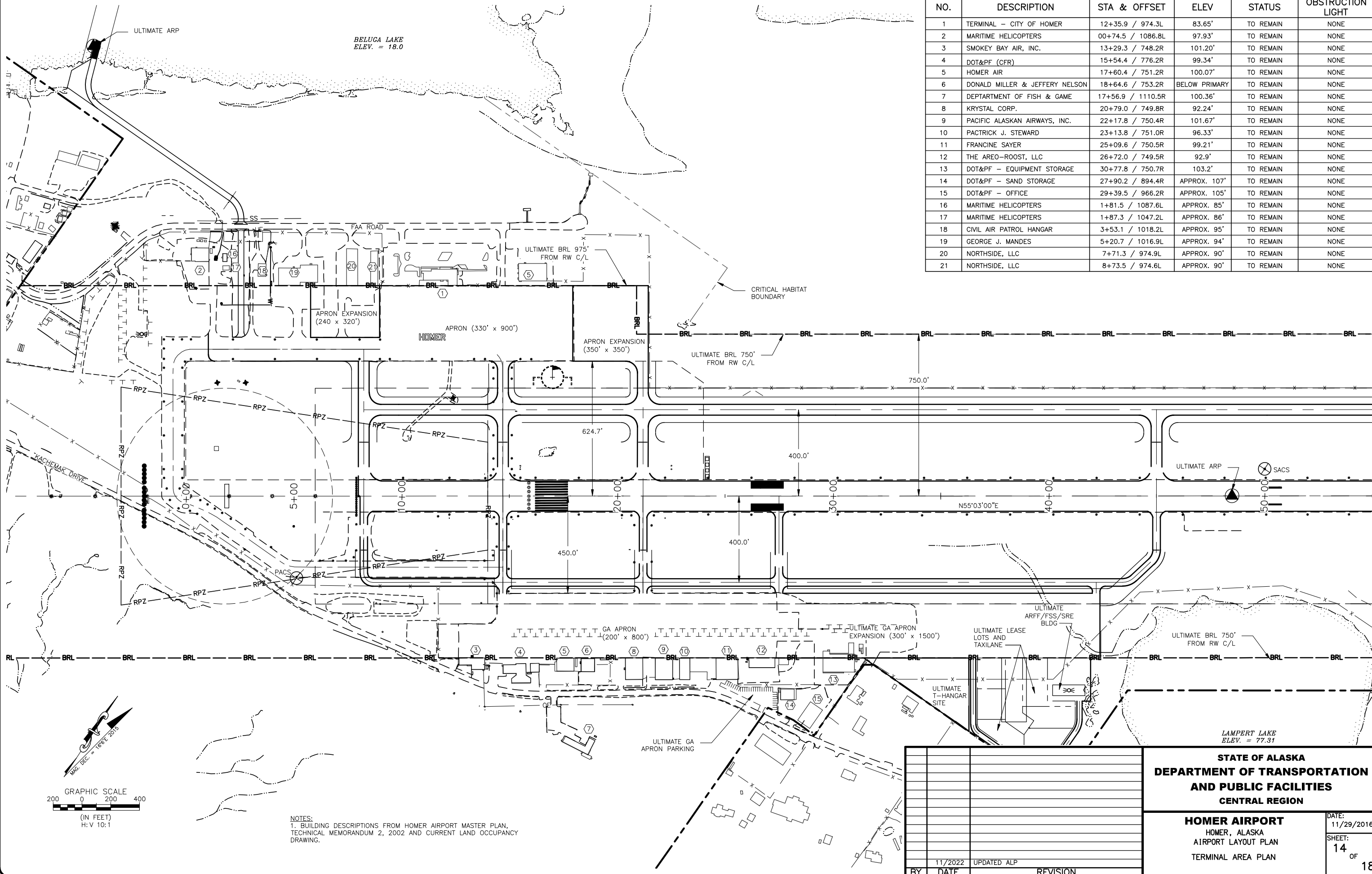
**STATE OF ALASKA
DEPARTMENT OF TRANSPORTATION
AND PUBLIC FACILITIES
CENTRAL REGION**

**HOMER AIRPORT
HOMER, ALASKA
AIRPORT LAYOUT PLAN
AIRPORT PROPERTY PLAN**

DATE: 11/29/2016
SHEET: 13 OF 18

Drawn By: CCW
Checked By: CJA
Reviewed By: BRH
Date: 12/05/2022, 1:33 PM
Layout Name: 14_TERMINAL
File Name: W:\Projects\Homer\ALP\Report Layout\Plan\CAD\ALP\Homer_Airport_ALP.dwg

BUILDINGS					
NO.	DESCRIPTION	STA & OFFSET	ELEV	STATUS	OBSTRUCTION LIGHT
1	TERMINAL – CITY OF HOMER	12+35.9 / 974.3L	83.65'	TO REMAIN	NONE
2	MARITIME HELICOPTERS	00+74.5 / 1086.8L	97.93'	TO REMAIN	NONE
3	SMOKEY BAY AIR, INC.	13+29.3 / 748.2R	101.20'	TO REMAIN	NONE
4	DOT&PF (CFR)	15+54.4 / 776.2R	99.34'	TO REMAIN	NONE
5	HOMER AIR	17+60.4 / 751.2R	100.07'	TO REMAIN	NONE
6	DONALD MILLER & JEFFERY NELSON	18+64.6 / 753.2R	BELOW PRIMARY	TO REMAIN	NONE
7	DEPARTMENT OF FISH & GAME	17+56.9 / 1110.5R	100.36'	TO REMAIN	NONE
8	KRYSTAL CORP.	20+79.0 / 749.8R	92.24'	TO REMAIN	NONE
9	PACIFIC ALASKAN AIRWAYS, INC.	22+17.8 / 750.4R	101.67'	TO REMAIN	NONE
10	PATRICK J. STEWARD	23+13.8 / 751.0R	96.33'	TO REMAIN	NONE
11	FRANCINE SAYER	25+09.6 / 750.5R	99.21'	TO REMAIN	NONE
12	THE AREO-ROOST, LLC	26+72.0 / 749.5R	92.9'	TO REMAIN	NONE
13	DOT&PF – EQUIPMENT STORAGE	30+77.8 / 750.7R	103.2'	TO REMAIN	NONE
14	DOT&PF – SAND STORAGE	27+90.2 / 894.4R	APPROX. 107'	TO REMAIN	NONE
15	DOT&PF – OFFICE	29+39.5 / 966.2R	APPROX. 105'	TO REMAIN	NONE
16	MARITIME HELICOPTERS	1+81.5 / 1087.6L	APPROX. 85'	TO REMAIN	NONE
17	MARITIME HELICOPTERS	1+87.3 / 1047.2L	APPROX. 86'	TO REMAIN	NONE
18	CIVIL AIR PATROL HANGAR	3+53.1 / 1018.2L	APPROX. 95'	TO REMAIN	NONE
19	GEORGE J. MANDES	5+20.7 / 1016.9L	APPROX. 94'	TO REMAIN	NONE
20	NORTHSIDE, LLC	7+71.3 / 974.9L	APPROX. 90'	TO REMAIN	NONE
21	NORTHSIDE, LLC	8+73.5 / 974.6L	APPROX. 90'	TO REMAIN	NONE



GRAPHIC SCALE
(IN FEET)
H: V 10: 1
MAY BEC = 1986/2015

NOTES:
1. BUILDING DESCRIPTIONS FROM HOMER AIRPORT MASTER PLAN, TECHNICAL MEMORANDUM 2, 2002 AND CURRENT LAND OCCUPANCY DRAWING.

NO.	DATE	REVISION
	11/2022	UPDATED ALP

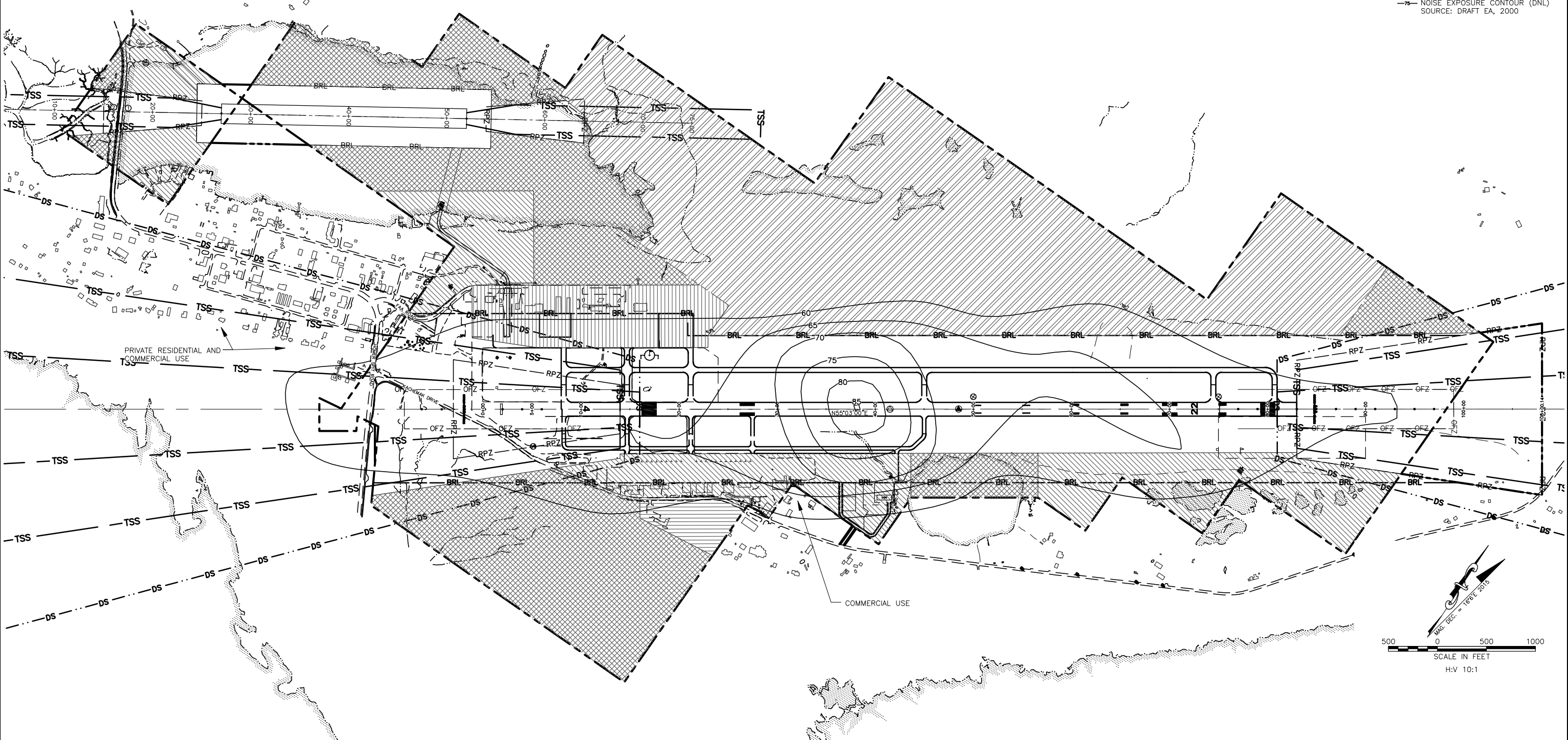
STATE OF ALASKA
DEPARTMENT OF TRANSPORTATION
AND PUBLIC FACILITIES
CENTRAL REGION

HOMER AIRPORT
HOMER, ALASKA
AIRPORT LAYOUT PLAN
TERMINAL AREA PLAN

DATE:
11/29/2016
SHEET:
14
OF
18

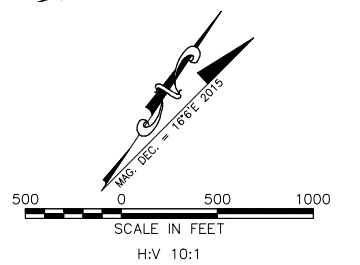
Date Plotted: 12/05/2022, 1:33 PM
 Plotter: HPGL
 Layout Name: 15_LMUSE
 File Name: W:\Projects\Homer\ALP\Homer_ALP\Report Layout Plan\CAD\ALP\Homer_Airport_ALP.dwg

Designed By: CSW
 Drawn By: CJA
 Checked By: BRH



LEGEND

- AIR OPERATIONS AREA
- COMMERCIAL
- COMMERCIAL AVIATION
- CRITICAL HABITAT AREA
- GENERAL AVIATION
- UNDEVELOPED
- NOISE EXPOSURE CONTOUR (DNL)
SOURCE: DRAFT EA, 2000



		STATE OF ALASKA DEPARTMENT OF TRANSPORTATION AND PUBLIC FACILITIES CENTRAL REGION	
		HOMER AIRPORT HOMER, ALASKA AIRPORT LAYOUT PLAN LAND USE PLAN	
		DATE: 11/29/2016	15 OF 18
		SHEET:	
11/2022	UPDATED ALP		
DOWL 09/27/2016	WATERLANE LENGTH UPDATE		
BY	DATE	REVISION	

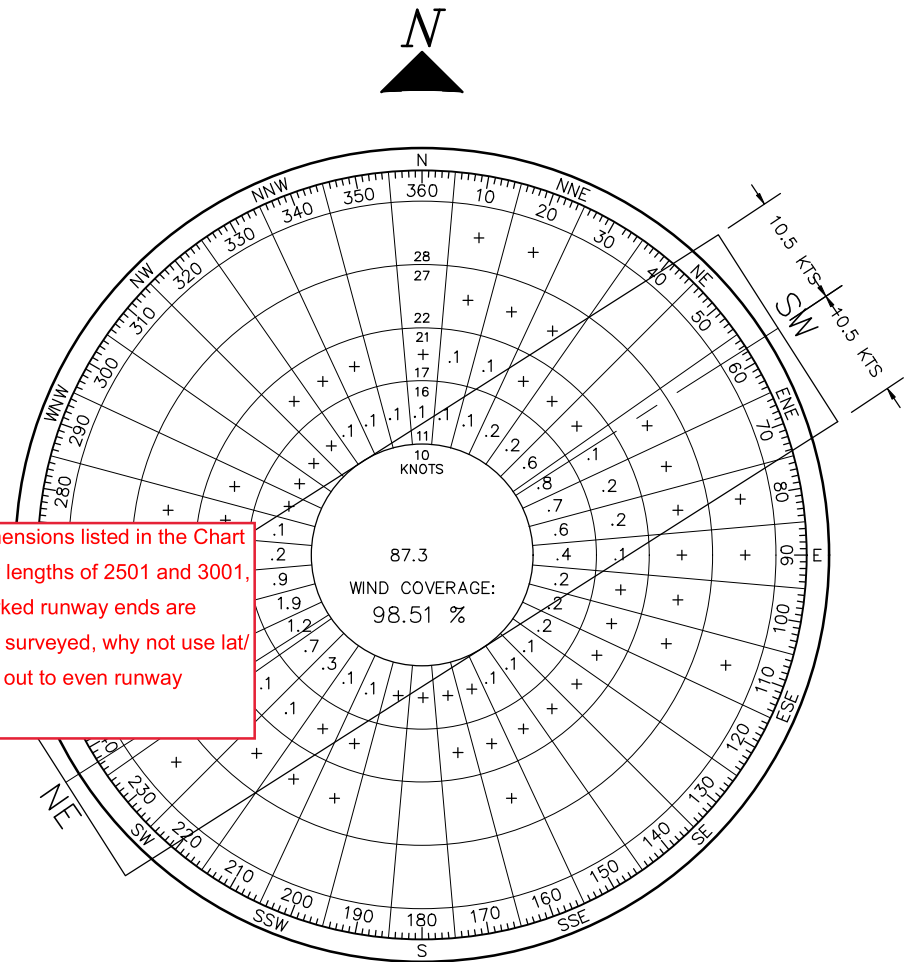
Date Plotted: 12/05/2022 1:33 PM
 Layout Name: 16_S98_DATA
 File Name: W:\Projects\Homer\ALP\Homer\ALP\Airport_Layout_Plan\CAD\ALP\Homer_ALP\Report_ALP.dwg
 Designed By: CSW
 Drawn By: CJA
 Checked By: BRH

AIRPORT DATA		
ITEM	EXISTING	ULTIMATE
ICAO IDENTIFIER	5BL	5BL
NATIONAL AIRPORT IDENTIFIER	5BL	5BL
FAA SITE NUMBER	50320.1*C	50320.1*C
AIRPORT ELEVATION NAVD88	18.0'	18.0'
AIRPORT REFERENCE CODE	A-I	A-I
MEAN MAX. TEMPERATURE, HOTTEST MONTH	60.5'	60.5'
MAGNETIC DECLINATION, YEAR, RATE OF CHANGE	16.42' E., JAN 1, 2015 0.31' W. / YEAR	16.42' E., JAN 1, 2015 0.31' W. / YEAR
CRITICAL AIRCRAFT OR AIRCRAFT GROUP	DHC-3 OTTER	DHC-3 OTTER
AIRPORT AND TERMINAL NAVIGATION AIDS	NONE	NONE
NPIAS SERVICE LEVEL	GA	GA
STATE EQUIVALENT SERVICE ROLE	REGIONAL	REGIONAL

WATERLANE NE-SW DATA		
ITEM	EXISTING	ULTIMATE
APPROACH SURFACES	20:1	20:1
VISIBILITY MINIMUMS	VISUAL	VISUAL
INSTRUMENT RUNWAY	N/A	N/A
RUNWAY SURFACE	WATER/ICE	WATER/ICE
PAVEMENT STRENGTH (LBS.)	N/A	N/A
TYPE	SEAPLANE BASE	SEAPLANE BASE
WATER LANE DIMENSION	200' x 2501'	200' x 2501'
WATERLANE OPERATIONS AREA WITH TAXI CHANNELS	600' x 3001'	600' x 3001'
AIRCRAFT APPROACH CATEGORY	A	A
AIRPLANE DESIGN GROUP	I	I
MEAN GEODETIC BEARING	N56°13'00.3"E	N56°13'00.3"E
EFFECTIVE GRADE	0%	0%
TOUCHDOWN ZONE ELEVATION (NAVD88)	18.0'	18.0'
RUNWAY PROTECTION ZONE (RPZ) DIMENSIONS *	1000'x250'x450'	1000'x250'x450'
RUNWAY LIGHTING	NONE	NONE
RUNWAY MARKING	NONE	NONE
RUNWAY VISUAL AND INSTRUMENT NAVAIDS	NONE	NONE

GEOGRAPHIC COORDINATES		
ITEM	EXISTING	ULTIMATE
ARP		
LATITUDE	N59°38'29.60"	N59°38'34.94"
LONGITUDE	W151°31'16.06"	W151°30'11.99"
STATION/OFFSET	19+18.48 501.53'LT	49+56.22 881.31'RT
NE WATERLANE END		
LATITUDE	N59°38'43.50"	N59°38'43.50"
LONGITUDE	W151°30'17.58"	W151°30'17.58"
STATION	STA 52+00.96	STA 52+00.96
ELEVATION	18.0'	18.0'
SW WATERLANE END		
LATITUDE	N59°38'29.80"	N59°38'29.80"
LONGITUDE	W151°30'58.03"	W151°30'58.03"
STATION	STA 26+99.50	STA 26+99.50
ELEVATION	18.0'	18.0'

Doesn't match dimensions listed in the Chart Supplement. Why lengths of 2501 and 3001, since these unmarked runway ends are calculated and not surveyed, why not use lat/long that calculate out to even runway length?



VFR WIND DATA				
RUNWAY	10.5 kt	13 kt	16 kt	20 kt
WATERLANE NE-SW	98.51%			

SOURCE: U.S. DEPARTMENT OF COMMERCE, NATIONAL OCEANIC AND ATMOSPHERIC ADMINISTRATION, NATIONAL CLIMATIC DATA CENTER
 FEBRUARY 5, 2016
 PERIOD: 2006 - 2015

- NOTES:
1. ALL LATITUDE/LONGITUDE COORDINATES ARE NAD83.
 2. ALL ELEVATIONS ARE NAVD88 GOED 12.
 3. MAPPING BASED ON THE 2016 AERONAUTICAL SURVEY PERFORMED BY DOWL.

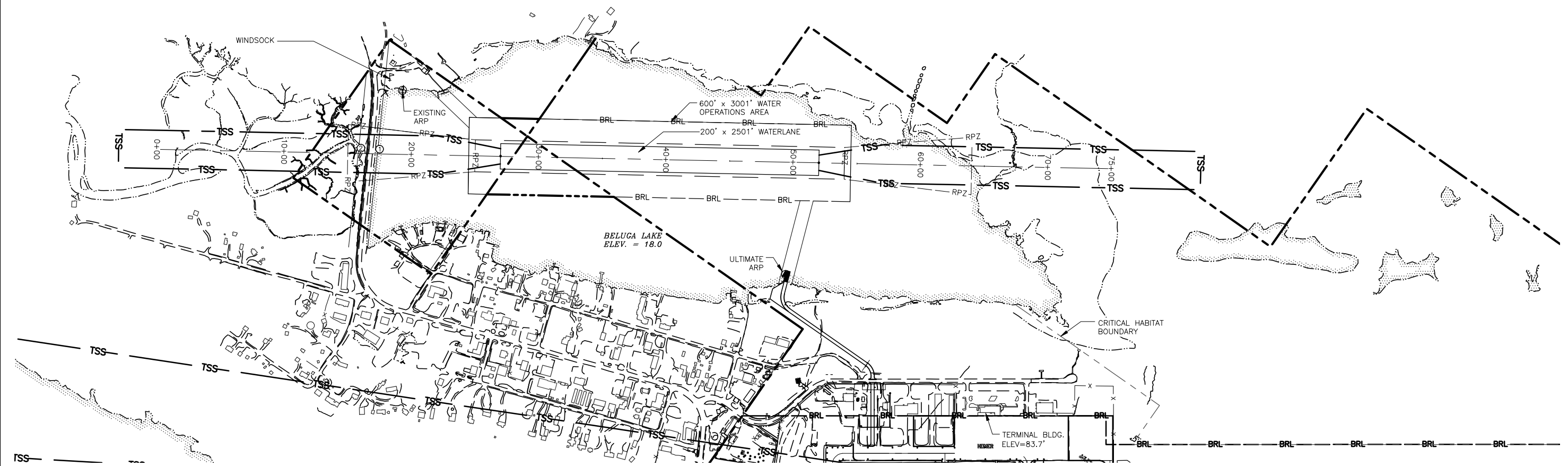
BY	DATE	REVISION
DOWL	09/27/2016	WATERLANE LENGTH AND THRESHOLD STATIONING UPDATE
	11/2022	UPDATED ALP

STATE OF ALASKA
DEPARTMENT OF TRANSPORTATION
AND PUBLIC FACILITIES
CENTRAL REGION

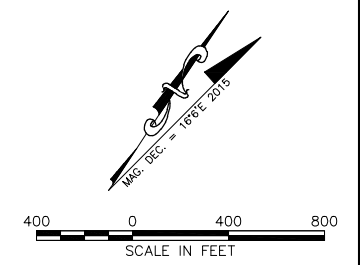
HOMER AIRPORT
 HOMER, ALASKA
 AIRPORT LAYOUT PLAN
 SEAPLANE BASE
 VICINITY MAP, DATA TABLES,
 AND WIND ROSE

DATE: 11/29/2016
 SHEET: 16 OF 18

Date Plotted: 12/05/2022, 1:33 PM
 Layout Name: 17_S98_ALP
 File Name: W:\Projects\Homer\ALP\Homer_ALP\Report Layout Plan\CAD\ALP\Homer_Airport_ALP.dwg
 Designed By: CSW
 Drawn By: CIA
 Checked By: BRH

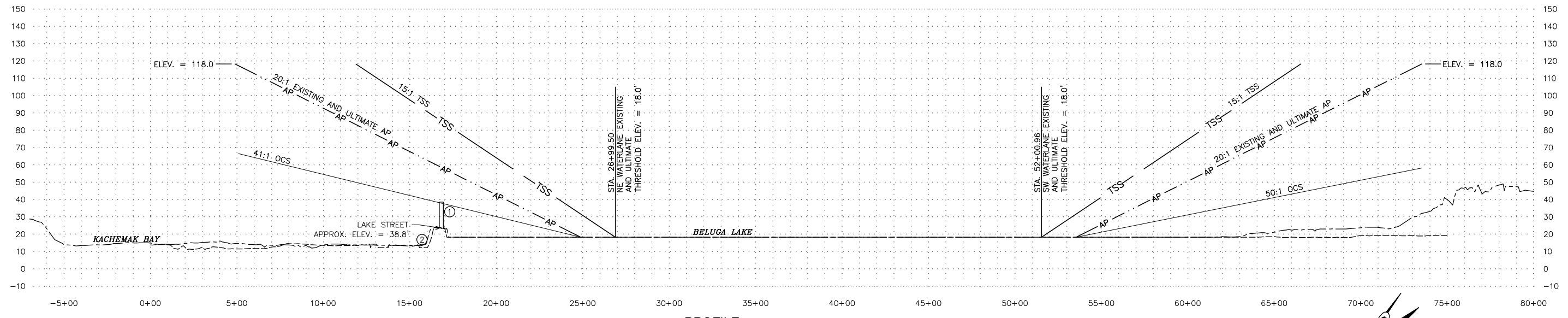
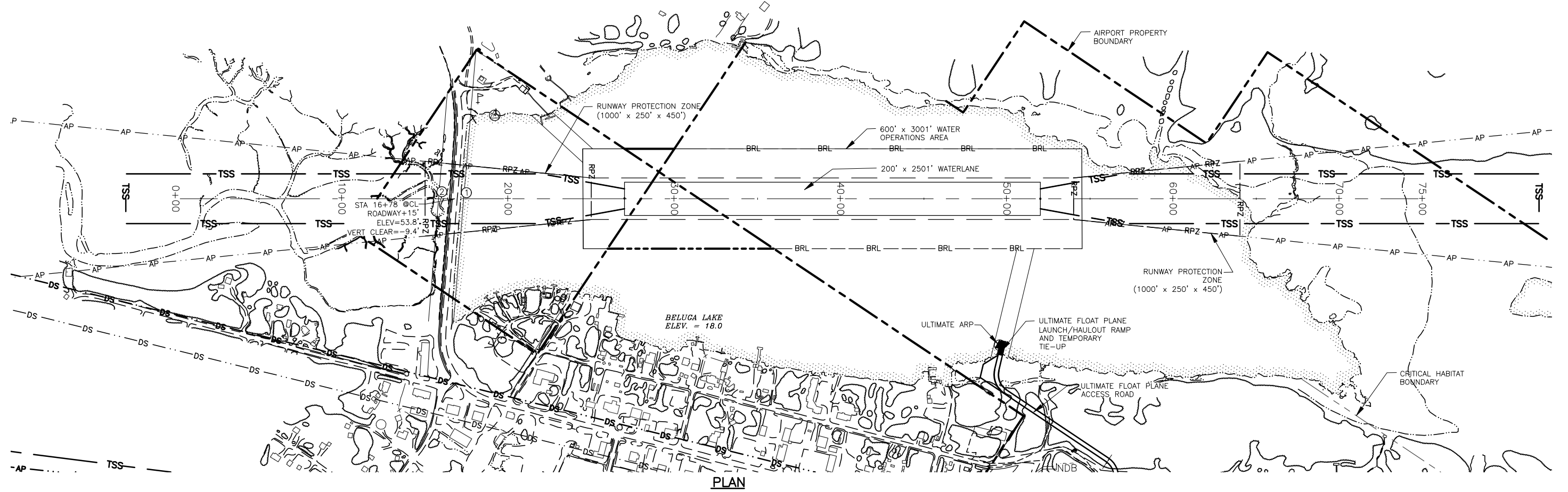


- NOTES:**
1. NO THRESHOLD SITING SURFACE OBJECT PENETRATIONS.
 2. NO OFZ OBJECT PENETRATIONS.



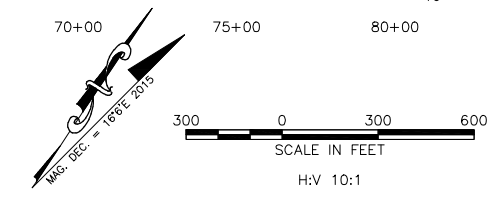
		STATE OF ALASKA DEPARTMENT OF TRANSPORTATION AND PUBLIC FACILITIES CENTRAL REGION	
		HOMER AIRPORT HOMER, ALASKA AIRPORT LAYOUT PLAN SEAPLANE BASE LAYOUT	
		DATE: 11/29/2016	SHEET: 17 OF 18
		BY: DATE: REVISION	
		11/2022	UPDATED ALP
		DOWL 09/27/2016	WATERLANE LENGTH UPDATE

Date Plotted: 12/06/2022, 1:34 PM
 Layout Name: 18_SFB_APRR
 File Name: W:\Projects\Homer\ALP\Homer_ALP\Report_Layout\Plan\CAD\ALP\Homer_Airport_ALP.dwg
 Designed By: CCW
 Drawn By: CIA
 Checked By: BRH



PART 77 SURFACE OBSTRUCTIONS											
ID #	DESCRIPTION	STATION/OFFSET	GRD ELEV	AGL	TOP ELEV	SURFACE PENETRATED	SURFACE ELEV	AMOUNT PENETRATION	TRIGGER EVENT	DISPOSITION	STAGE TO CORRECT
1	LAKE STREET + 15	17+78.4, 0'	38.8'		38.8'	NONE	N/A	0.0'	N/A	TO REMAIN	N/A
2	BELUGA SLOUGH	14+78.7, 0'	12'		12'	NONE	N/A	0.0'	N/A	TO REMAIN	N/A

NOTES:
 1. TOUCHDOWN ZONE ELEVATION = 18.0'



STATE OF ALASKA DEPARTMENT OF TRANSPORTATION AND PUBLIC FACILITIES CENTRAL REGION			DATE: 11/29/2016 SHEET: 18 OF 18
HOMER AIRPORT HOMER, ALASKA AIRPORT LAYOUT PLAN SEAPLANE BASE INNER APPROACH SURFACE PLAN AND PROFILE			
BY: [] DATE: [] REVISION: []	11/2022 UPDATED ALP DOWL 09/27/2016 WATERLANE LENGTH AND THRESHOLD STATIONING UPDATE		