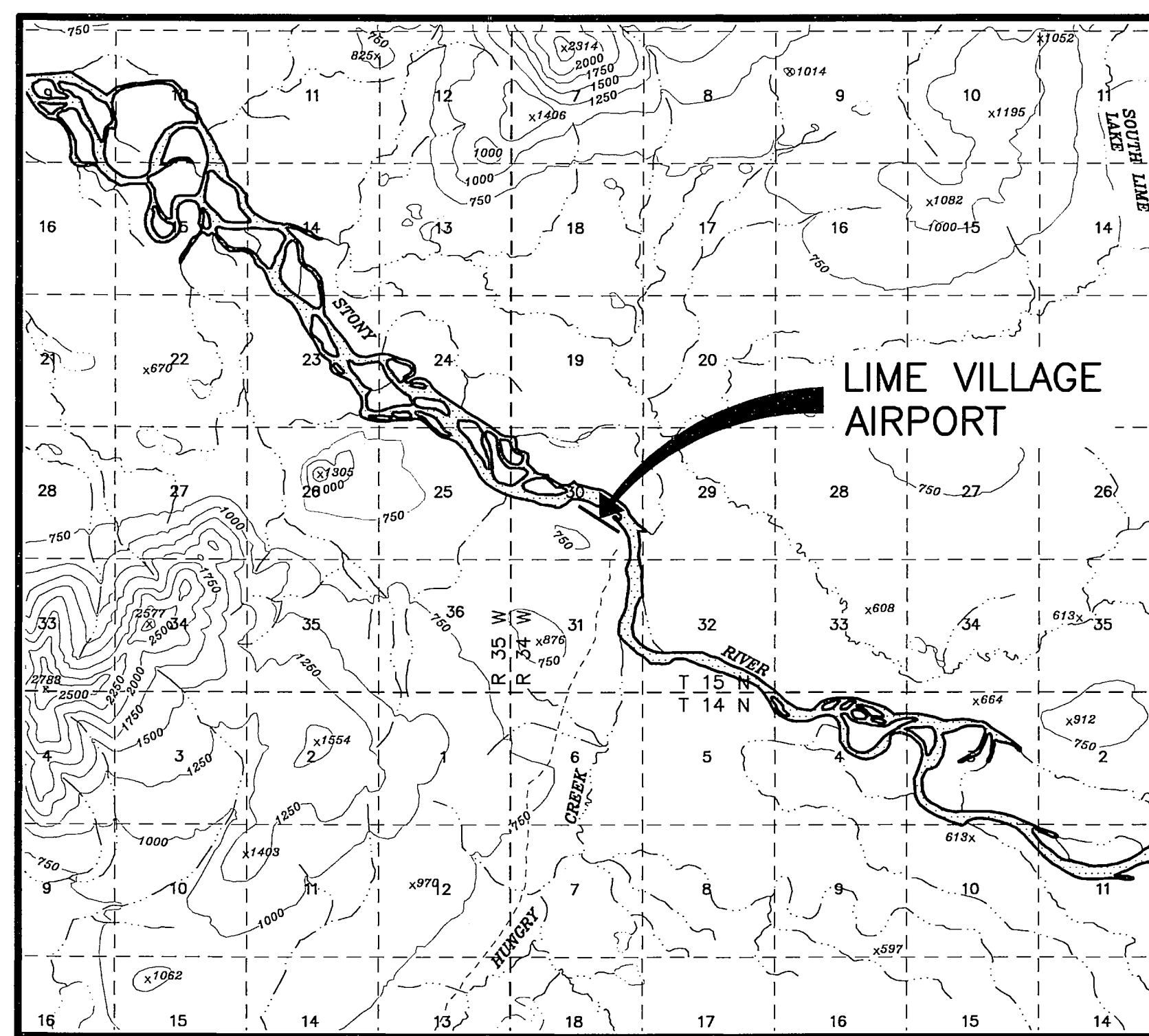
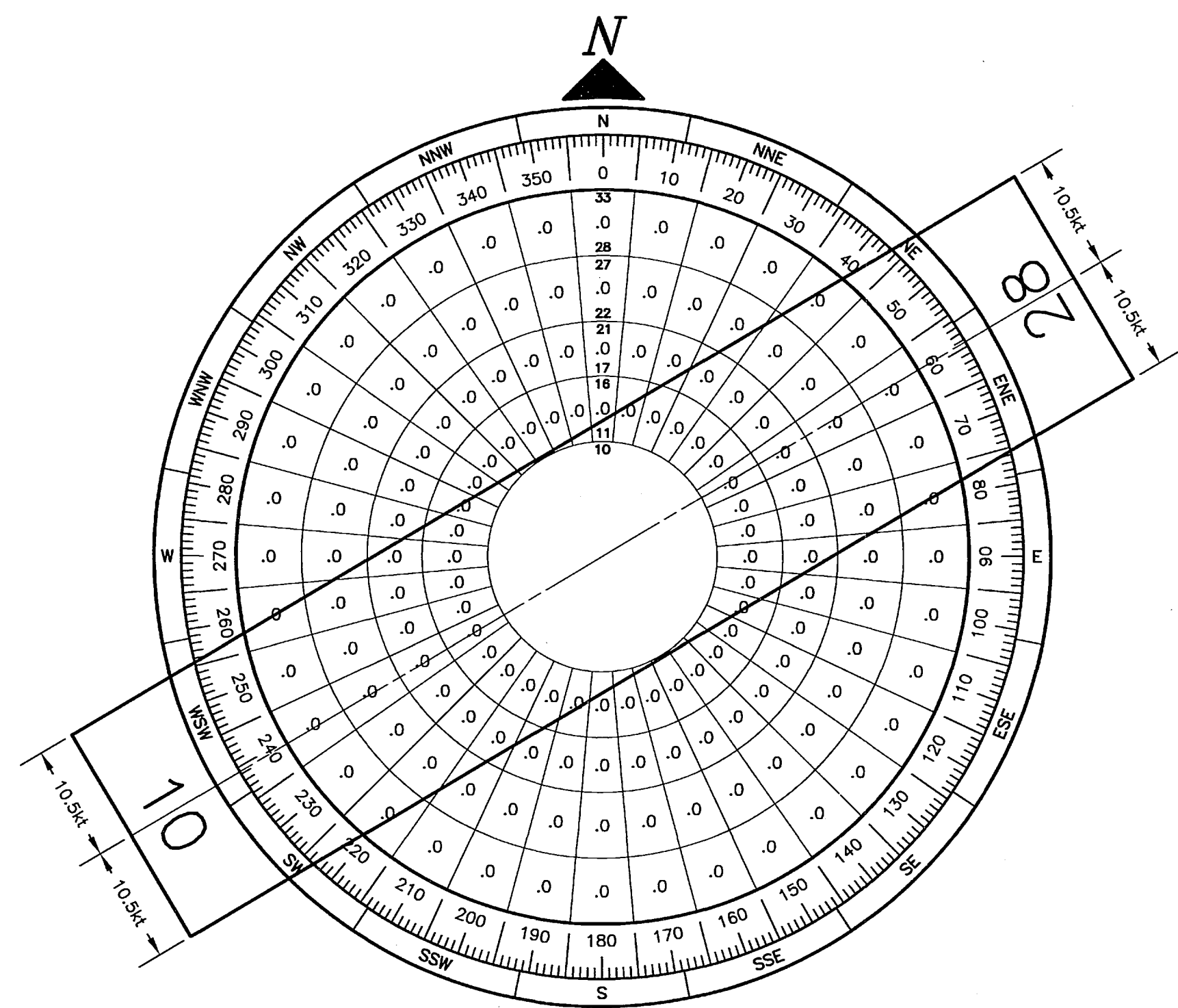


LEGEND		
ITEM	EXISTING	ULTIMATE
AIRPORT REFERENCE POINT (ARP)		
ANTENNA		
BLUFF		
BUILDINGS		
BUILDING RESTRICTION LINE (BRL)		
FENCE		
PAPI		
PROPERTY LINE		
REIL		
ROADWAYS		
ROTATING BEACON		
SHORELINE		
SURVEY MONUMENT		
THRESHOLD MARKERS/LIGHTS		
TOPOGRAPHIC CONTOURS		
TREE (LARGE SINGLE)		
TREELINE		
VASI		
WIND CONE		
WIND CONE AND SEGMENTED CIRCLE		

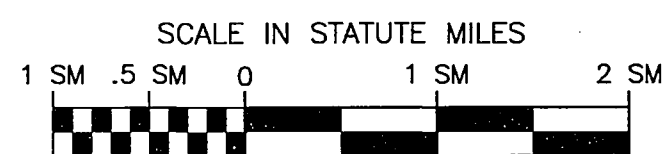
GEOGRAPHIC COORDINATES TABLE				
ITEM	EXISTING LATITUDE	EXISTING LONGITUDE	ULTIMATE LATITUDE	ULTIMATE LONGITUDE
ARP	61°21'33"N	155°26'25"W		
THRESHOLD RW 10	61°21'36.63"N	155°26'38.63"W		
THRESHOLD RW 28	61°21'29.11"N	155°26'12.15"W		

AIRPORT DATA		
ITEM	EXISTING	ULTIMATE
ICAO IDENTIFIER	NONE	
NATIONAL AIRPORT IDENTIFIER	2AK	
FAA SITE NUMBER	50449.5*A	
AIRPORT ELEVATION NAVD88	544.8'	
AIRPORT REFERENCE CODE	A-1	
MEAN MAX. TEMPERATURE, HOTTEST MONTH	65°F, JULY	
AIRPORT AND TERMINAL NAVIGATION AIDS	NONE	
TAXIWAY LIGHTING/MARKING	NONE	
OBSTRUCTION SURVEY SOURCE & TYPE	NONE	
MAGNETIC DECLINATION, YEAR, RATE OF CHANGE	16°48'E, 2010, -0°16'(W) / YEAR	

RUNWAY 10/28 DATA				
ITEM	EXISTING	NEAR TERM	ULTIMATE	
RUNWAY TYPE UTILITY OR OTHER THAN UTILITY	UTILITY			
FAR PART 77 APPROACH CATEGORY (V, NPI, P)	V / V			
APPROACH SURFACES	20:1 / 20:1			
VISIBILITY MINIMUM	1 SM			
RUNWAY SURFACE	GRAVEL			
PAVEMENT STRENGTH SW,DW,DTW,DDTW x1000lbs	N/A			
AIRCRAFT APPROACH CATEGORY	A			
AIRPLANE DESIGN GROUP	I			
MEAN GEODETIC BEARING	N59°22'4.80"W			
EFFECTIVE GRADE	0.27%			
TOUCHDOWN ELEVATION NAVD88 (ESTIMATED)	544.8' / 544.8'			
RUNWAY DIMENSIONS	60' x 1500'			
RUNWAY SAFETY AREA (RSA) DIMENSIONS	90' x 1980'			
LENGTH BEYOND R/W END	240' / 240'			
RUNWAY PROTECTION ZONE (RPZ) DIMENSIONS	250' x 450' x 1000'			
RUNWAY OBJECT FREE AREA (OFA) DIMENSIONS	250' x 1980'			
LENGTH BEYOND R/W END OR STOPWAY	240' / 240'			
RUNWAY OBSTACLE FREE ZONE (OFZ) DIMENSIONS	250' x 1900'			
RUNWAY LIGHTING	NONE			
RUNWAY MARKING TYPE	NONE			
RUNWAY VISUAL APPROACH AIDS	NONE			



VICINITY MAP
 WITHIN PROTRACTED SECTION 30
 T15N, R34W, SEWARD MERIDIAN, ALASKA.
 U.S.G.S. LIME HILLS (B-7)



WIND DATA TABLE				
RUNWAY	10.5 kt	13 kt	16 kt	20 kt
10/28 *				

* WIND DATA NOT AVAILABLE.

NOTES

- NO PRIOR ALP EXISTS FOR THE LIME VILLAGE AIRPORT.
- THE INFORMATION SHOWN HEREON IS BASED ON A FIELD SURVEY PERFORMED BY DOWL HKM ON OCTOBER 29, 2008.
- THE HORIZONTAL DATUM IS NAD83 (CORS96) (EPOCH:2003.0000) AS DETERMINED BY STATIC GPS OBSERVATIONS USING LEICA DUAL FREQUENCY GPS RECEIVERS AND PROCESSED USING THE NGS OPUS UTILITY. CONTROL CORS STATIONS USED FOR THE POSITION SOLUTION WERE AB15, KEN5 AND TLKA.
- ELEVATIONS ARE NAV88 ORTHOMETRIC HEIGHTS AS DETERMINED BY GPS OBSERVATIONS AND A HIGH RESOLUTION MODEL, GEOID-99.
- THRESHOLD COORDINATES WERE DETERMINED USING A STATIC GPS NETWORK.
- THE TOPOGRAPHIC MAPPING IN THE AIRPORT VICINITY WAS DIGITIZED FROM USGS QUAD LIME HILLS (B-7).
- RUNWAY NUMBERS CHANGED FROM 9/27 TO 10/28 DUE TO CHANGES IN MAGNETIC DECLINATION.

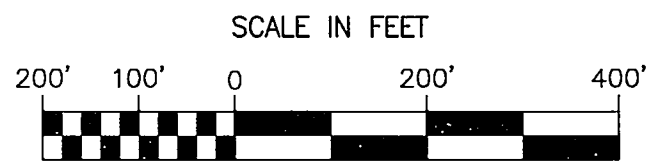
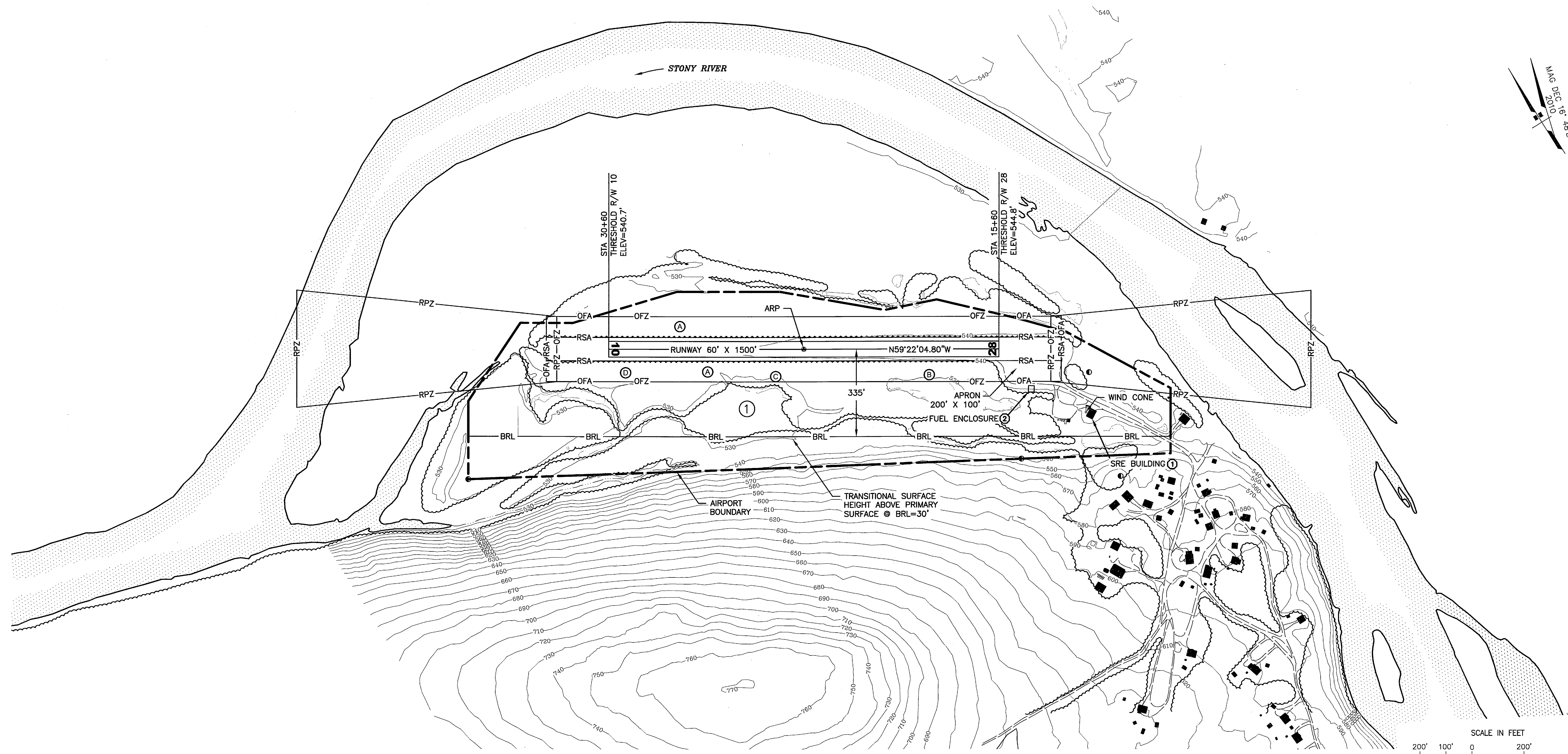
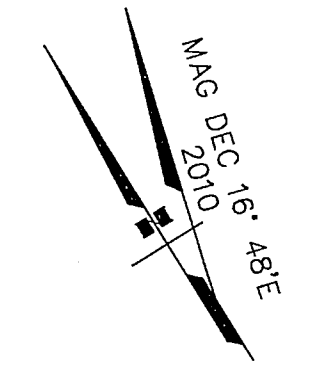
DRAWING INDEX	
SHT #	TITLE
1	DATA
2	EXISTING LAYOUT
3	AIRPORT AIRSPACE, 14 CFR, PART 77

BY: _____	DATE: _____	REVISION: _____
APPROVED: <i>K. Kim Rice</i>	DATE: 12-6-2010	
K. KIM RICE, P.E.	PRECONSTRUCTION ENGINEER	
RECOMMENDED: <i>H. M. Douthett</i>	DATE: 12/3/2010	
HARVEY M. DOUTHETT, P.E.	DESIGN SECTION CHIEF	

STATE OF ALASKA DEPARTMENT OF TRANSPORTATION AND PUBLIC FACILITIES CENTRAL REGION	
LIME VILLAGE AIRPORT LIME VILLAGE, ALASKA AIRPORT LAYOUT PLAN	DATE: 10/20/2010 SHEET: 1 OF 3

AIRPORT LAYOUT PLAN CONDITIONAL APPROVAL SUBJECT TO ALP APPROVAL LETTER DATED 1/22/2011 FAA AIRSPACE REVIEW NUMBER: 2010-AAL-145-NRA	DATE: 1/20/11 FAA, AIRPORTS DIVISION ALASKAN REGION, AAL-621
-----------------------------------------------------------------------------------------------------------------------------------------	-----------------------------------------------------------------

Date Plotted: 10/20/2010, 10:27 AM
 Layout Name: P:\Projects\059422\LINE VILLAGE\ALP\ALP-LIMEV.dwg
 File Name:
 Designed By: milwellyn
 Drawn By: B. Quinn
 Checked By: Branson



PROPERTY STATUS							
ID #	INTEREST	GRANTOR	GRANTEE	PARCEL SIZE	DATE ACQUIRED	RECORDED DOC NO.	ACQUIRED AIP NO.
I	20 YEAR LEASE ACQUIRED FROM BLM	B.L.M.	STATE OF ALASKA, DOT/PF	35.19± ac	08-24-78	ADA 11248	

- PROPERTY AND TRACT LINES ARE UNSURVEYED AND BASED ON 1977 PROPERTY PLAN.
- B.L.M. WAIVED ADMINISTRATION OF LEASE TO VILLAGE CORPORATION, LIME VILLAGE COMPANY, ON MARCH 5, 1984.

BUILDING DATA TABLE				
ID #	DESCRIPTION	STATION/OFFSET	TOP ELEV (NAVD88)	OBSTRUCT MARKING
①	DOT&PF SRE BUILDING*	12+23/227' LT	565.50'	NONE
②	FUEL ENCLOSURE	14+46/140' LT	555.60'	LIGHT

* WIND CONE IS ON TOP OF SRE BUILDING.

OFZ PENETRATIONS		
ID #	DESCRIPTION	DISPOSITION
Ⓐ	BRUSH*	REMOVE
Ⓑ	TREES	REMOVE
Ⓒ	TREES	REMOVE
Ⓓ	TREES	REMOVE

*ENTIRE LENGTH, BOTH SIDES OF RUNWAY, STARTING APPROXIMATELY 50' OFF CENTERLINE.

- NOTES:
- RUNWAY STATIONING APPROXIMATED FROM THE 1977 AIRPORT PROPERTY PLAN.
 - THERE IS NO TAXIWAY AT THE LIME VILLAGE AIRPORT.

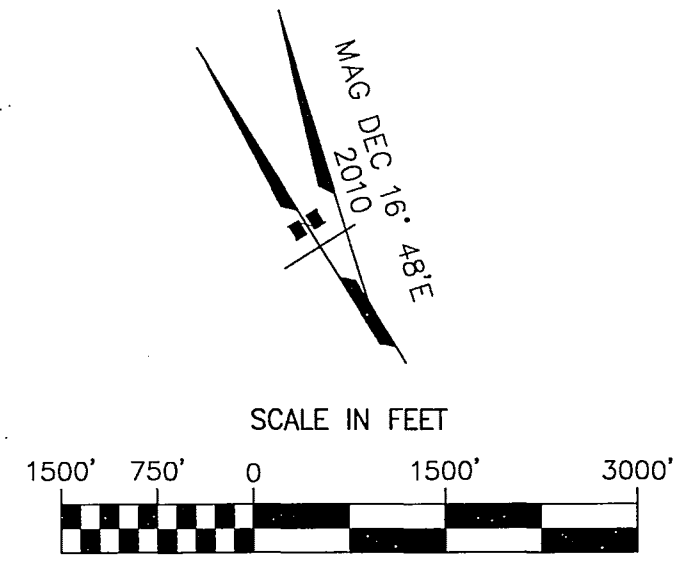
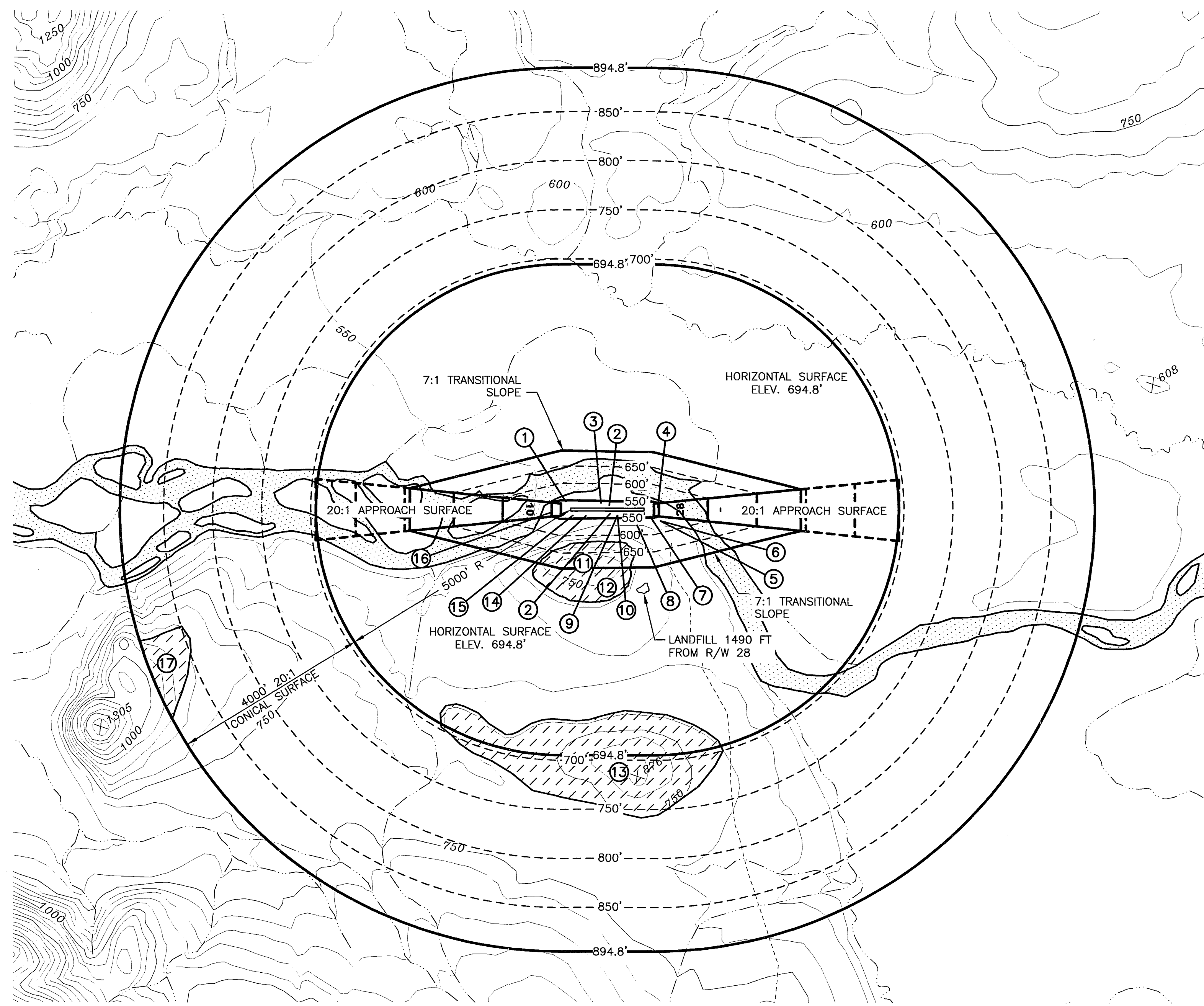
BY	DATE	REVISION

LIME VILLAGE AIRPORT LIME VILLAGE, ALASKA AIRPORT LAYOUT PLAN EXISTING LAYOUT	DATE: 10/20/2010
	SHEET: 2 OF 3

FILE No.: 232-94-3

Designed By: nllwellyn
 Drawn By: bsc/urn
 Checked By: bhanson

Date Plotted: 10/20/2010, 10:27 AM
 Layout Name: P77(3)
 File Name: P:\Projects\0594225\LIME VILLAGE ALP\ALP-LIMEV.dwg

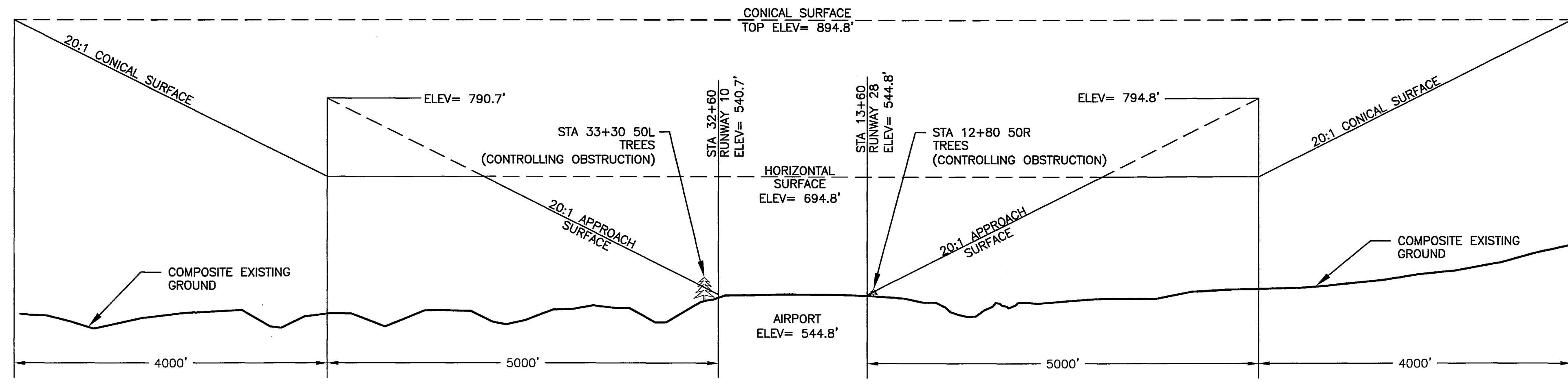


PART 77 SURFACE OBSTRUCTIONS TABLE								
ID #	DESCRIPTION	STATION/OFFSET	ELEVATION	SURFACE PENETRATED	SURFACE ELEVATION	AMOUNT PENETRATION	DISPOSITION	STAGE TO CORRECT
1*	TREES*	31+60/165R	570	TRANSITIONAL	546	24	REMOVE	NEAR-TERM
2	BRUSH	**/50	543.7-556.8	PRIMARY	540.7-544.8	3-12	REMOVE	NEAR-TERM
3*	TREES	24+40/135R	598	TRANSITIONAL	544	54	REMOVE	NEAR-TERM
4*	TREES	12+80/50R	560	APPROACH R/W 28	549	11	REMOVE	NEAR-TERM
5	SRE BUILDING	12+23/230L	566	TRANSITIONAL	560	6	REMAIN	
6	WIND CONE	12+15/230L	578	TRANSITIONAL	560	18	REMAIN	
7	FUEL ENCLOSURE	14+46/140L	555.6	TRANSITIONAL	547	8.6	REMAIN	
8*	TREES	17+00/320L	594.5	TRANSITIONAL	572.5	22	REMOVE	NEAR-TERM
9*	TREES	21+00/120L	578.5	PRIMARY	543.5	35	REMOVE	NEAR-TERM
10*	TREES	21+00/130L	578.5	TRANSITIONAL	544	34.5	REMOVE	NEAR-TERM
11	TERRAIN	***	620-760	TRANSITIONAL	620-694.8	0-65	REMAIN	
12	TERRAIN****	25+50/1480L	770	HORIZONTAL	694.8	75.2	REMAIN	
13	TERRAIN****	17+00/5430L	876	CONICAL	717	159	REMAIN	
14*	TREES	27+45/130L	584	TRANSITIONAL	542.5	41.5	REMOVE	NEAR-TERM
15*	TREES	30+15/120L	578	PRIMARY	541	37	REMOVE	NEAR-TERM
16*	TREES	33+30/50L	588	APPROACH R/W 10	544.2	43.8	REMOVE	NEAR-TERM
17	TERRAIN****	117+10/3390L	1000	CONICAL	895.7	104.3	REMAIN	

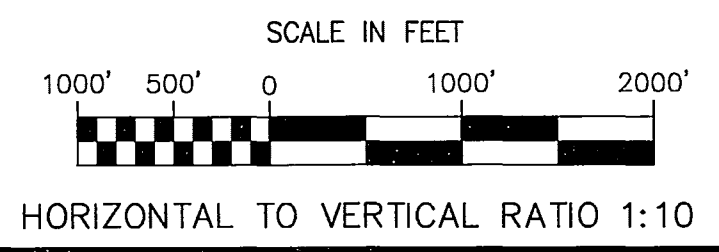
* HIGHEST MEASURED FEATURE IN VEGETATED AREA; REFER TO BRUSH LINE EXTENTS ON LAYOUT.
 ** BOTH SIDES, ENTIRE LENGTH OF RUNWAY.
 *** SEE PLAN VIEW.
 **** HIGHEST FEATURE IN A LARGE AREA OF TERRAIN PENETRATION. SEE PLAN VIEW FOR EXTENTS.

NOTES

- AIRPORT ELEVATION IS 544.8'.
- PRIMARY SURFACE WIDTH IS 250'.
- TOPO CONTOURS ARE SHOWN IN FEET. BASEMAP DATA FROM USGS LIME HILLS (B-7).
- A RANGEFINDER WITH BUILT-IN INCLINOMETER WAS USED TO IDENTIFY OBSTRUCTIONS CLOSE TO THE RUNWAY IN THE PRIMARY AND TRANSITIONAL SURFACES.
- APPROACH SURFACES ARE 20:1, BEGINNING 200' BEYOND THE THRESHOLDS.
- THE RUNWAY 10 CONTROLLING OBSTRUCTION IS TREES AT STATION 33+30, APPROXIMATELY 50' LT OF RUNWAY CENTERLINE, ELEVATION IS 47' ABOVE RUNWAY. THE OBSTRUCTION CLEARANCE SLOPE IS 5:1, PER FAA AC 150-5300-35, SECTION 4, DATA ELEMENT NUMBER 57.
- THE RUNWAY 10 APPROACH END SITING SURFACES DO NOT MEET ANY THRESHOLD SITING CRITERIA BECAUSE OF VEGETATION (TREES & BRUSH) PENETRATIONS. IF THE TREES APPROXIMATELY 380' BEYOND AND 50' LT OF THE RUNWAY AND THE BRUSH FROM THE PERIMETER OF THE RUNWAY WERE REMOVED, THERE WOULD BE NO OBJECT PENETRATIONS IN THE APPROACH END SITING SURFACE OF RUNWAY 10, AS DEFINED IN FAA AC 150/5300-13, CHG 14, APPENDIX 2, TABLE A2-1, LINE 5.
- THE RUNWAY 28 CONTROLLING OBSTRUCTION IS TREES AT STATION 12+80, APPROXIMATELY 50' RT OF RUNWAY CENTERLINE, ELEVATION IS 15' ABOVE RUNWAY. THE OBSTRUCTION CLEARANCE SLOPE IS 20:1, PER FAA AC 150-5300-35, SECTION 4, DATA ELEMENT NUMBER 57.
- THE RUNWAY 28 APPROACH END SITING SURFACES DO NOT MEET ANY THRESHOLD SITING CRITERIA BECAUSE OF VEGETATION (BRUSH) PENETRATIONS. IF THE BRUSH WERE REMOVED FROM THE PERIMETER OF THE RUNWAY AND APRON, THERE WOULD BE NO OBJECT PENETRATIONS IN THE APPROACH END SITING SURFACE OF RUNWAY 28, AS DEFINED IN FAA AC 150/5300-13, CHG 14, APPENDIX 2, TABLE A2-1, LINE 2.
- THERE ARE NO KNOWN ORDINANCES SPECIFYING HEIGHT RESTRICTIONS IN LIME VILLAGE. LIME VILLAGE IS AN UNINCORPORATED COMMUNITY IN AN UNORGANIZED BOROUGH.
- THE LANDFILL IS LOCATED 1490' FROM THE NEAREST POINT ON THE RUNWAY. THERE IS NO SEWAGE DISPOSAL SITE OR WASTEWATER LAGOON IN LIME VILLAGE.



RUNWAY PROFILE



BY	DATE	REVISION

LIME VILLAGE AIRPORT
 LIME VILLAGE, ALASKA
 AIRPORT LAYOUT PLAN
 AIRPORT AIRSPACE
 14 CFR, PART 77

DATE: 10/20/2010
 SHEET: 3 OF 3