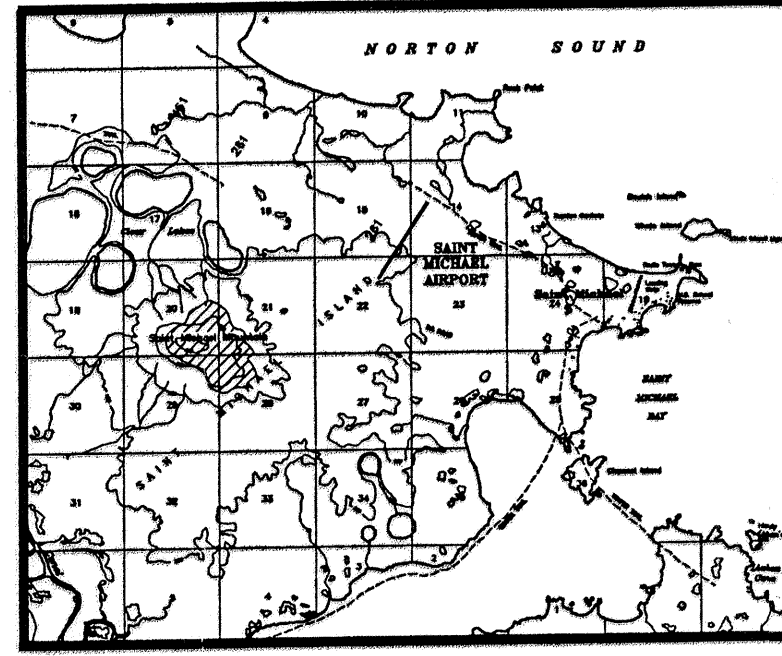


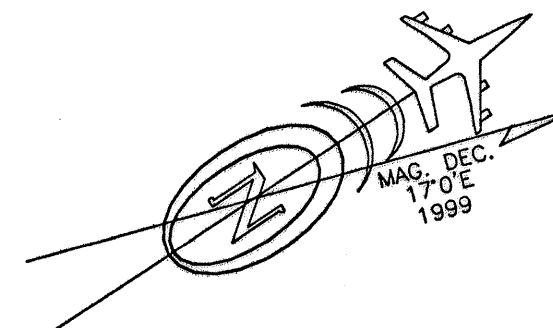
LOCATION MAP
NO SCALE



VICINITY MAP

S14, 15, 22 & 23

T33S, R18W, KATEEK RIVER MERIDIAN
USGS QUAD ST. MICHAEL



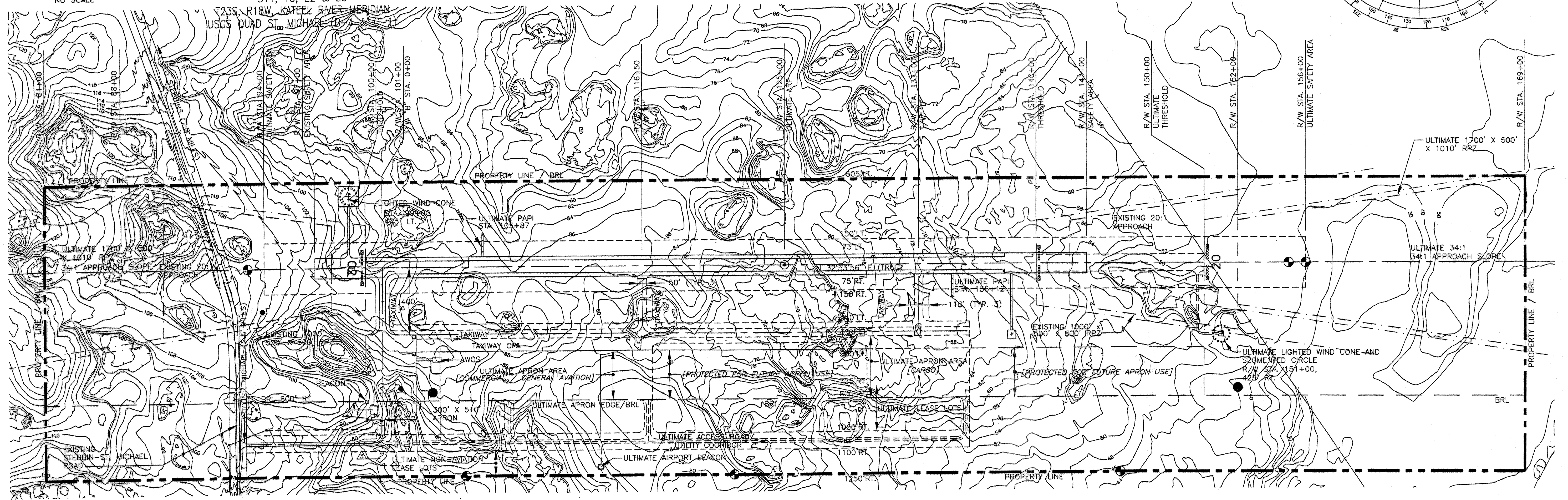
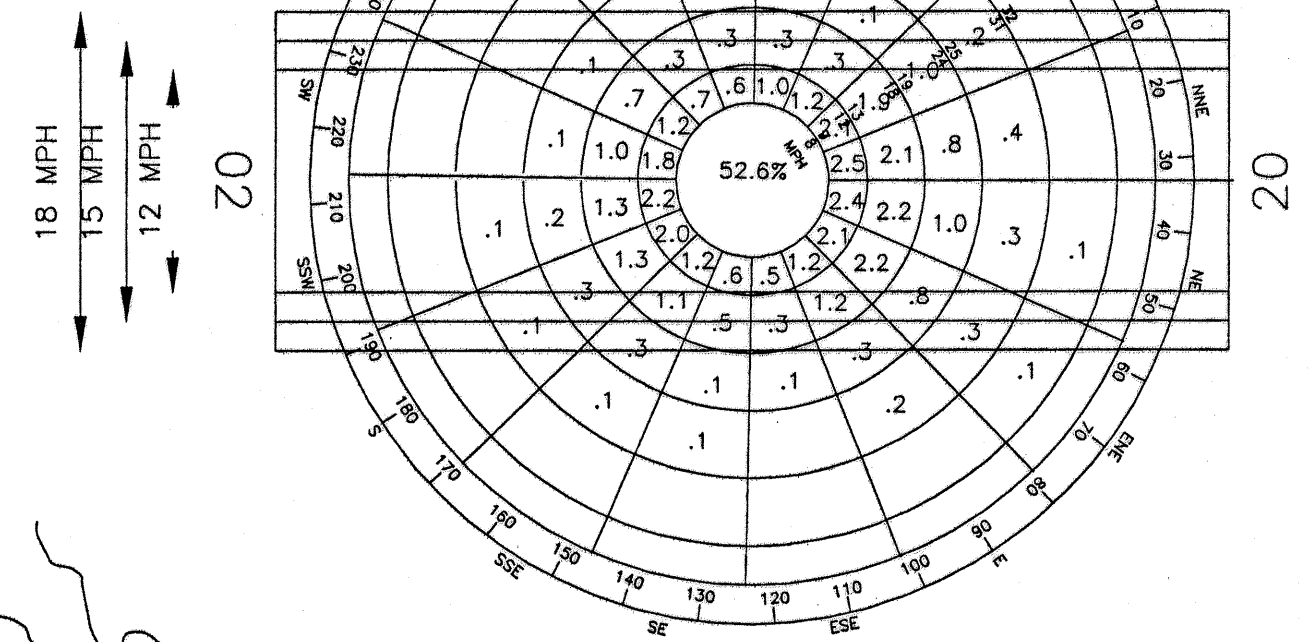
WIND DATA

SOURCE: UNIVERSITY OF ALASKA
ENVIRONMENT AND NATURAL
RESOURCES INSTITUTE (ENRI)

WIND DATA PERIOD: AUG 1989 - MARCH 1992

PERCENT WIND COVERAGE: WITH 12MPH CROSSWIND = 93.38
WITH 15MPH CROSSWIND = 97.30
WITH 18MPH CROSSWIND = 98.88

WIND ROSE



RUNWAY DATA		
RUNWAY 02-20		
	EXISTING	ULTIMATE
1/2 WIND COVERAGE	97.37%	98.88%
APPROACH VISIBILITY MINIMUM	≥1 MILE	≥3/4 MILE
RUNWAY SURFACE TYPE	GRAVEL	SAME
APPROACH SURFACES	20:1	34:1
RUNWAY LIGHTING	MIRL	SAME
RUNWAY MARKING	NONE	NONE
VISUAL APPROACH AIDS	NONE	PAPI
COMMUNICATION AIDS	NONE	SAME
R/W DIMENSIONS	4000' X 75'	5000' X 100'
R/W SAFETY AREA	4600' X 150'	6200' X 300'
ROFA	4600' X 500'	6200' X 800'
ROFZ	4400' X 400'	5400' X 400'

AIRPORT DATA			
	EXISTING	ULTIMATE	
AIRPORT ELEVATION (MSL)	106.5'	SAME	
AIRPORT REFERENCE CODE	B II	B III	
MEAN DAILY MAX. HOTTEST MONTH (JULY)	60°F.	SAME	
TAXIWAY LIGHTING	MITL	SAME	
RAMP LIGHTING	NONE	FLOODLIGHTS	
AIRPORT REFERENCE POINT (A.R.P.)	LAT. 63°29'28.32" N		
STA. 125+00	LONG. 162°06'31.35" W		
RUNWAY 02 THRESHOLD	LAT. 63°29'07.65" N		
STA. 100+00	LONG. 162°07'01.26" W		
RUNWAY 20 THRESHOLD	LAT. 63°29'40.72" N 63°29'48.98" N		
STA. 140+00	LONG. 162°06'13.40" W 162°06'01.43" W		
ULTIMATE: STA. 150+00			
NAVIGATION AIDS	BEACON	BEACON/GPS	

LEGEND		
	EXISTING	ULTIMATE
PROPERTY LINE	---	---
BUILDING RESTRICTION LINE (B.R.L.)	---	---
DEVELOPMENT	□	□
LIGHTED WINDCONE & SEGMENTED CIRCLE	⊙	⊙
BUILDINGS	□	□
THRESHOLD LIGHTS	ooo	ooo
AIRPORT REFERENCE POINT	⊙	⊙
ROTATING BEACON	⊙	⊙
CONTOUR LINES	—	—
TRAILS/DIRT ROADS	---	---
PAPI	—	—
PRIMARY MONUMENT	⊙	⊙
SECONDARY MONUMENT	⊙	⊙

NONSTANDARD CONDITIONS			
	STANDARD	EXISTING	ULTIMATE
PART 77 PENETRATIONS:			
TO HORIZONTAL SURFACE	NO PENETRATIONS TO 261'	PENETRATIONS	PENETRATIONS
TO CONICAL SURFACE	NO PENETRATIONS 261' TO 461'	PENETRATIONS	PENETRATIONS

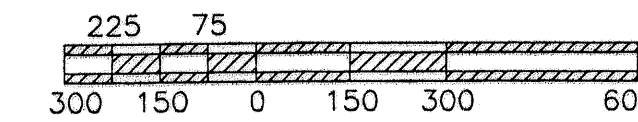
TAXIWAY DATA		
	EXISTING	ULTIMATE
T/W WIDTH	35'	50'
T/W SAFETY AREA WIDTH	79'	118'
T/W OFA	131'	186'

BUILDING TABLE		
REF. #	DESCRIPTION	ELEVATION (HIGHEST PT.) (MSL)
1	SNOW REMOVAL EQUIPMENT STORAGE BUILDING	128
2	ELECTRICAL EQUIPMENT ENCLOSURE	118
3	ULTIMATE TERMINAL BUILDING	125

NOTES
NO OFZ OBJECT PENETRATIONS.
NO THRESHOLD SITING SURFACE OBJECT PENETRATIONS.

NOTES

- THIS AIRPORT LAYOUT PLAN WAS PREPARED FROM FIELD SURVEYS PERFORMED BY FPE/Roen Engineers, Inc., ON SEPTEMBER 9-14, 1991, AND APRIL 30 - MAY 3, 1992, AND FROM MAPPING DEVELOPED FROM AERIAL PHOTOGRAPHY DATED NOVEMBER 2, 1991, BY Aeromap, U.S. LOW-LEVEL MAPPING WAS COMPLETED AT A SCALE OF 1"=200', 2' CONTOUR INTERVAL, FOR MOST OF THIS PROPERTY. HIGHER LEVEL MAPPING, COMPILED AT A SCALE OF 1"=400', 10' CONTOUR INTERVAL, IS APPENDED TO THE PROPERTY AS SHOWN, AT THE NORTH END, WHERE THE LOWER LEVEL MAPPING WAS UNAVAILABLE.
- THE VERTICAL DATUM IS BASED ON THE RECORD ELEVATION OF "TATCHEK UPPER BASE". THE HORIZONTAL DATUM IS BASED ON CONTROLLED GPS WORK DONE BY LCMF, INC. IN OCTOBER OF 1998. DATA BASE CONTROL YEAR: NAD 83.



DESIGN	RC
DRAWN	CAT
CHECKED	CML

BY	DATE	REVISIONS
	7-26-00	AS-BUILT

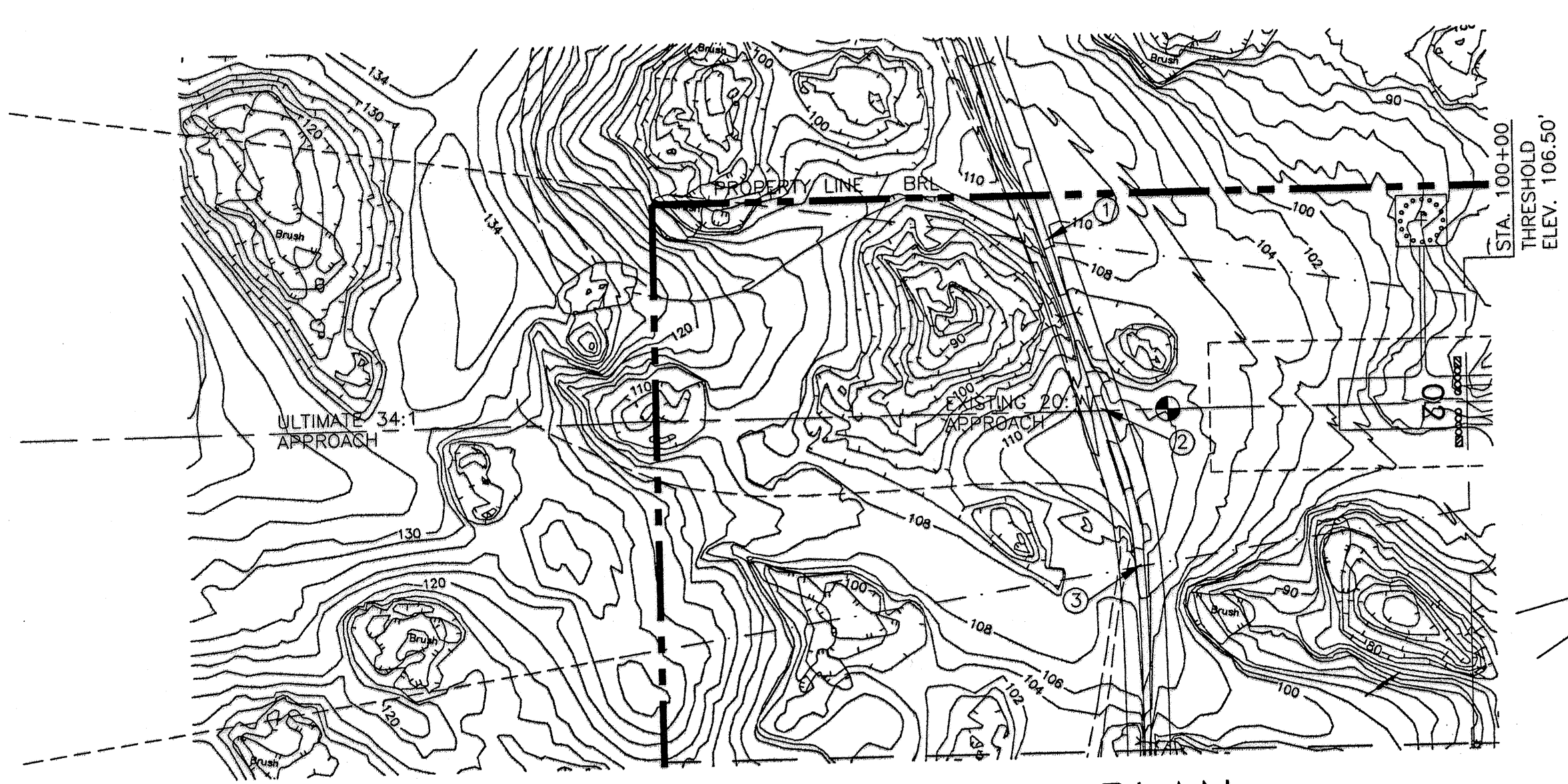
STATE OF ALASKA
DEPARTMENT OF TRANSPORTATION AND PUBLIC FACILITIES
NORTHERN REGION-DESIGN AND CONSTRUCTION-AVIATION
APPROVED *Patricia D. Miller* DATE 7/26/00
PATRICIA D. MILLER, P.E. DESIGN GROUP CHIEF

AIRPORT LAYOUT PLAN APPROVED
BY LETTER DATED: 11-29-00
David Stelling
AIRPORTS DIVISION,
ALASKAN REGION, AAL-020
AIRSPACE # 92-APL-191/NRA

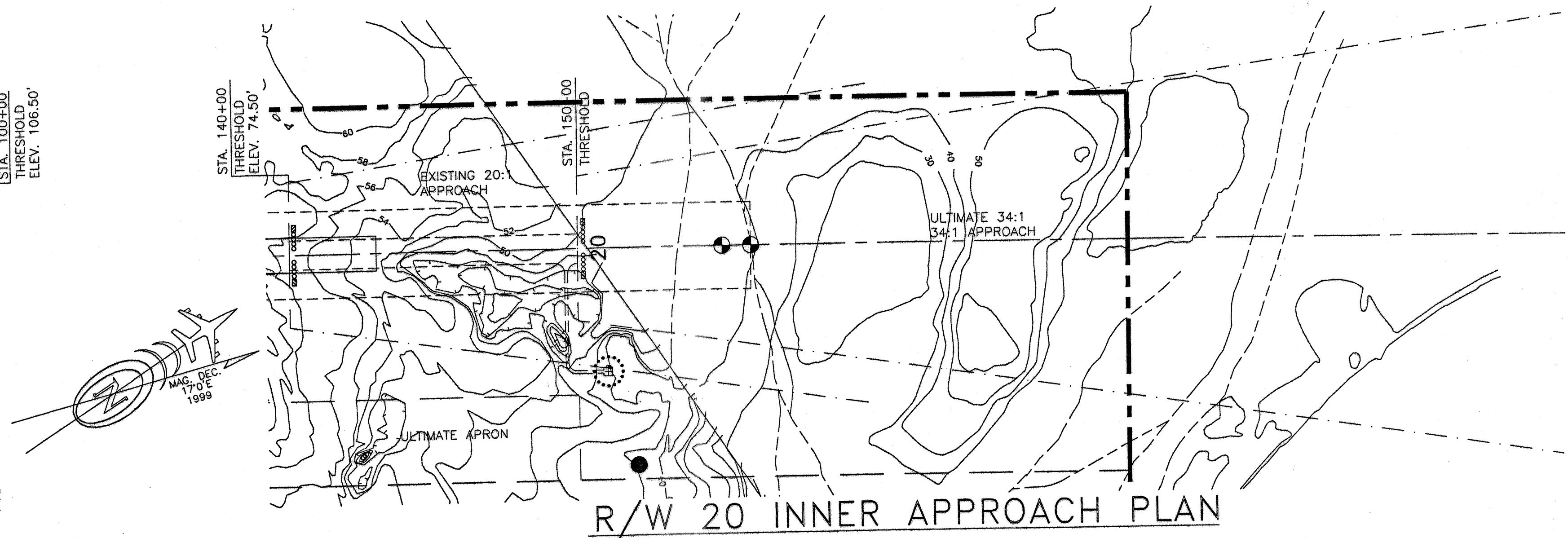
revised
THIS ALP SUPERSEDES ALP DATED 3/4/93.

ST. MICHAEL AIRPORT
AIRPORT LAYOUT PLAN

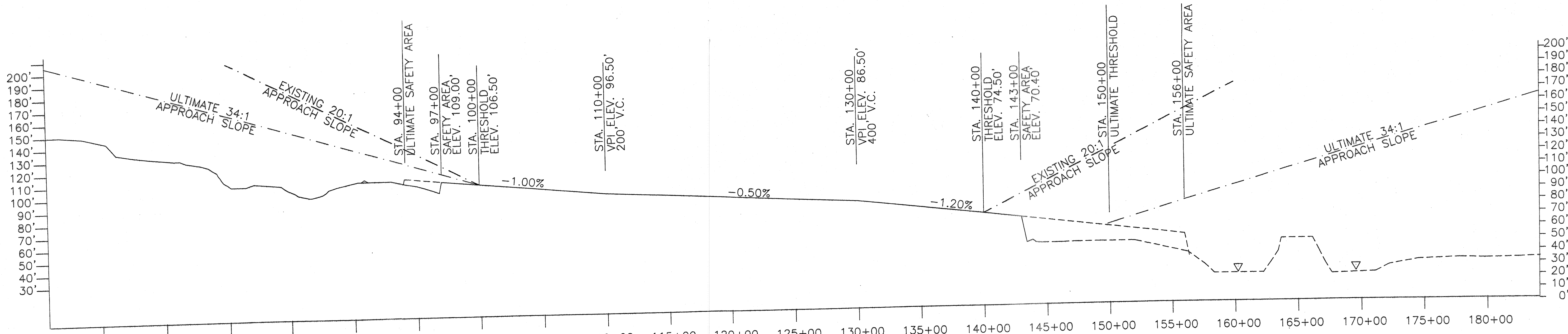
SHEET
1
OF
3



R/W 2 INNER APPROACH PLAN



OBJECTS IN RPZ					
#		R/W STATION	OFFSET DISTANCE	ROAD ELEVATION	APPROACH ELEVATION
1	EXISTING RD/RPZ LT.	90+29	366'	110'	135.1'
2	EXISTING ROAD/RPZ C/L	91+50	0'	112'	131.6'
3	EXISTING RD/RPZ RT.	92+28	336'	112'	129.3'



R/W 2 -20 PROFILE

DESIGN RC	
DRAWN CAT	
CHECKED CML	
BY	DATE
	REVISIONS
7-26-00	AS-BUILT

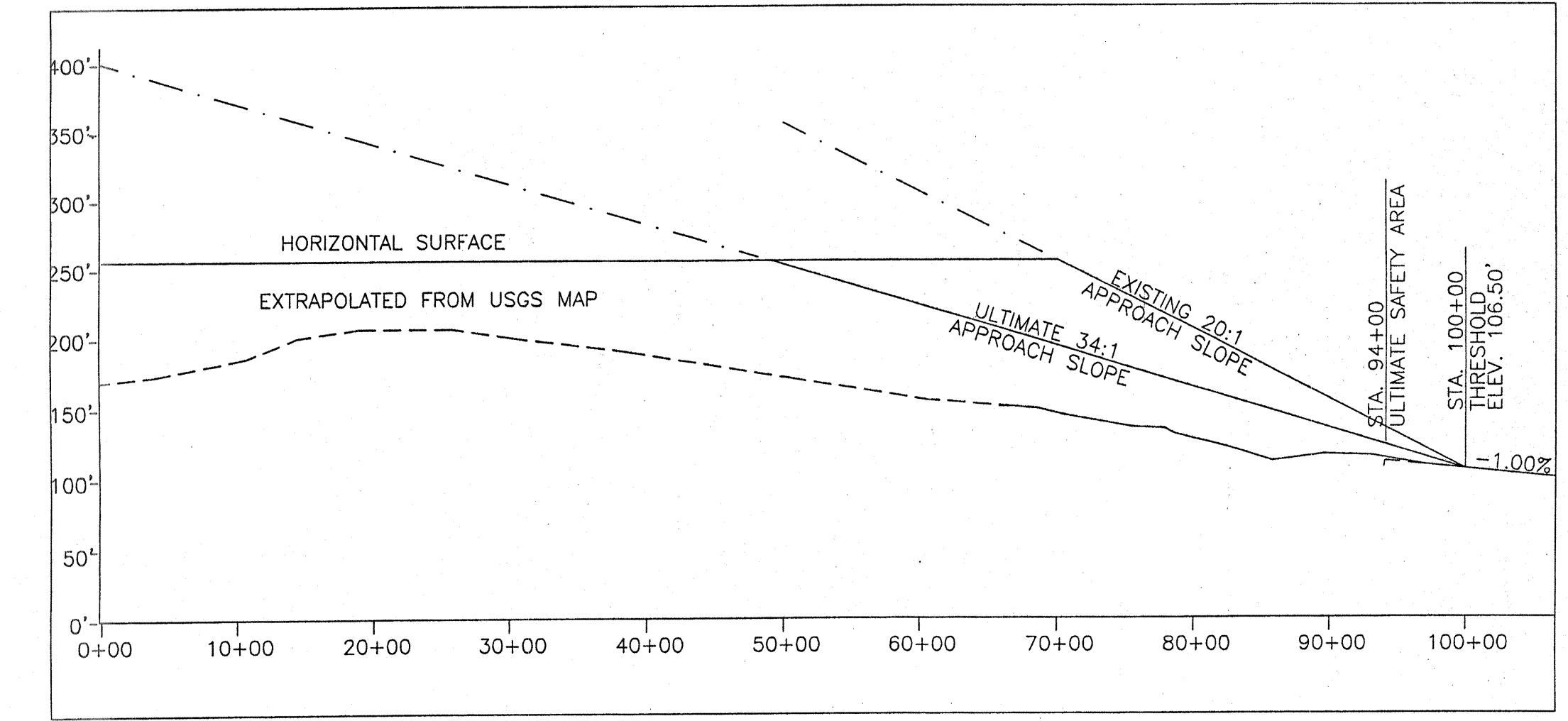
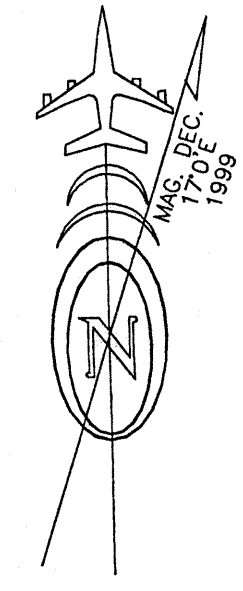
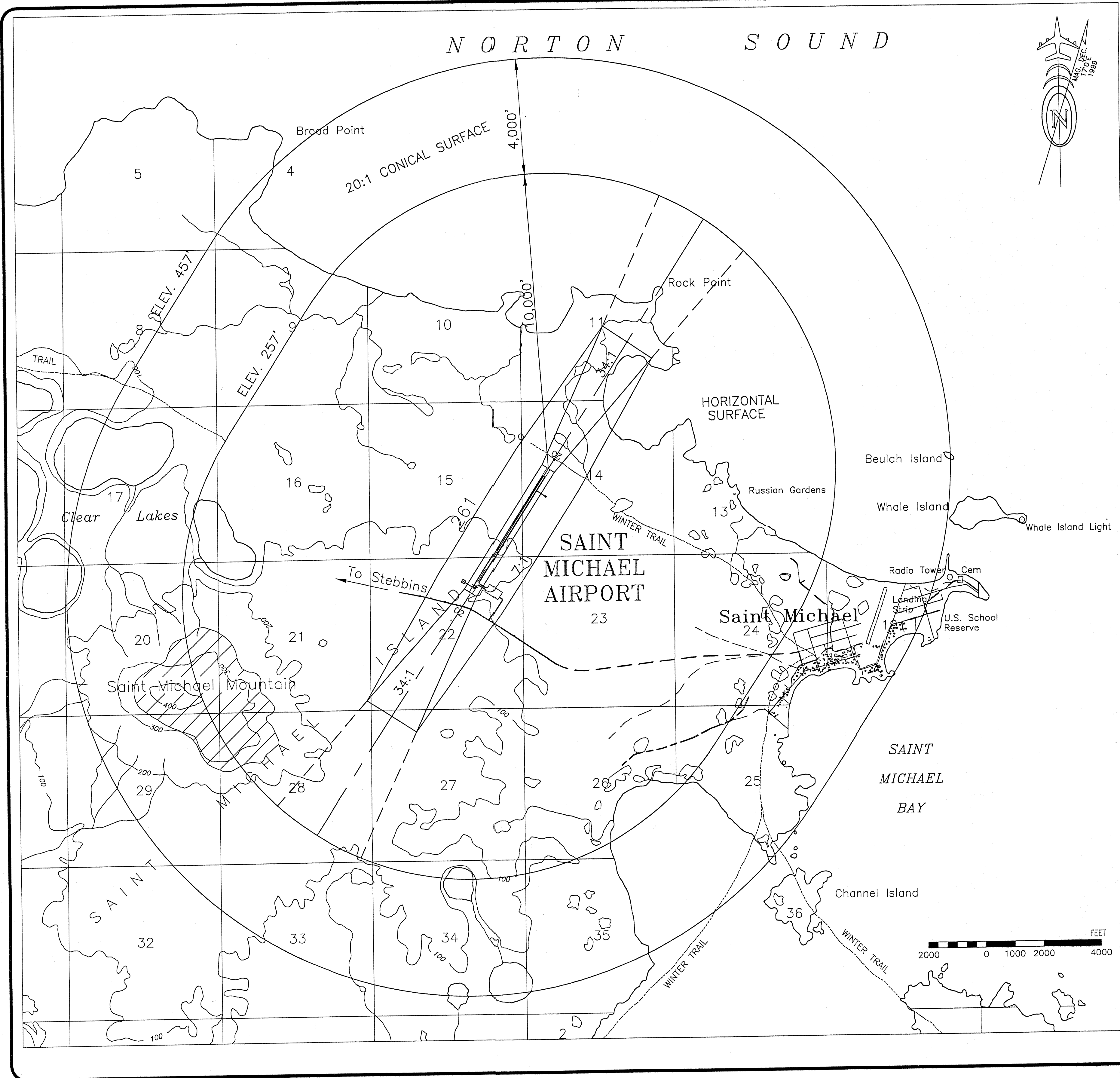
STATE OF ALASKA
 DEPARTMENT OF TRANSPORTATION AND PUBLIC FACILITIES
 NORTHERN REGION-DESIGN AND CONSTRUCTION-AVIATION

APPROVED *Patricia D. Miller* DATE *7/26/00*
 PATRICIA D. MILLER, P.E. DESIGN GROUP CHIEF

Revised AIRPORT LAYOUT PLAN APPROVED
 BY LETTER DATED: *11-29-00*
David Stelling
 AIRPORTS DIVISION,
 ALASKAN REGION, AAL-620

ST. MICHAEL AIRPORT
 INNER PORTION OF APPROACH
 SURFACE PLAN & PROFILE

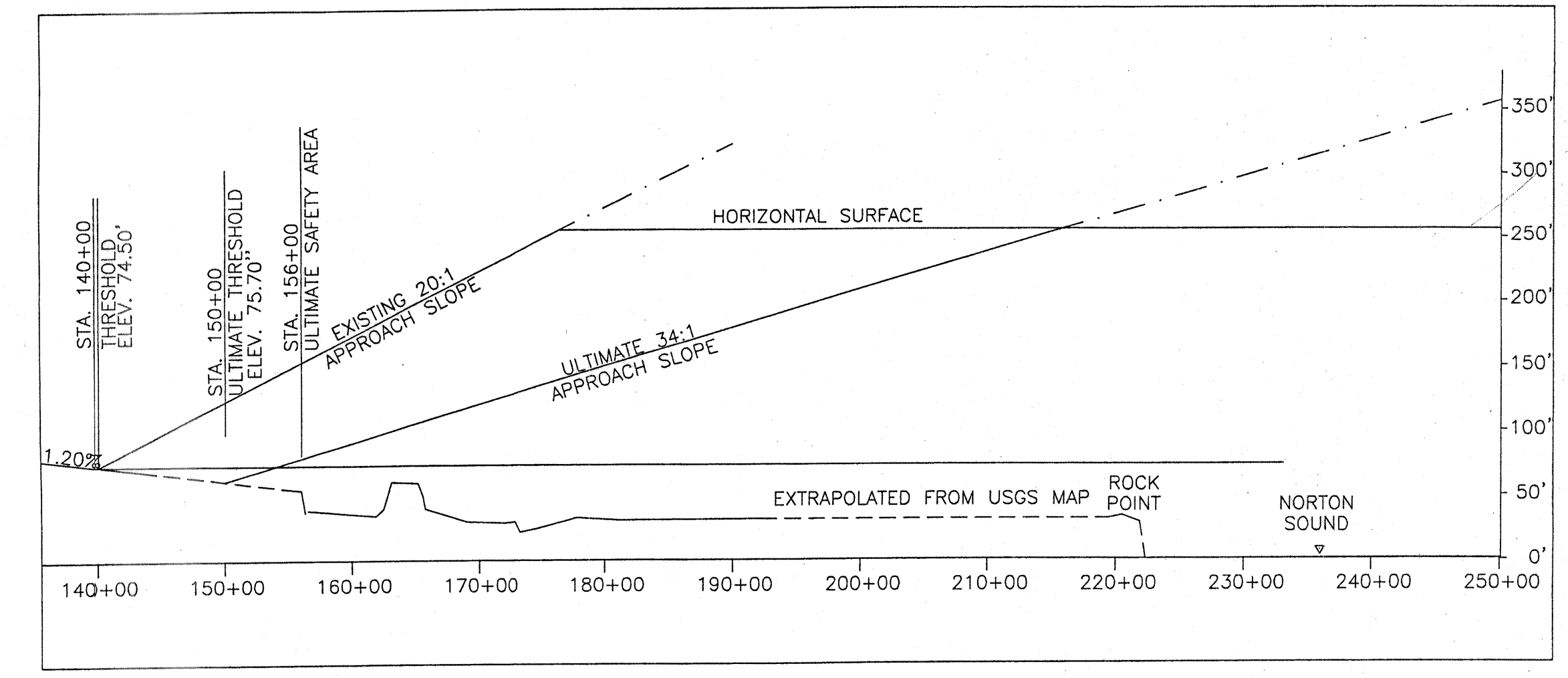
SHEET
 2 OF 3



R/W 2 COMPOSITE APPROACH PROFILE

SEE INNER PORTION OF THE APPROACH PROFILE DRAWING FOR CLOSE IN OBSTRUCTIONS.

FAR PART 77 PENETRATIONS			
ITEM	TOP (MSL) ELEV.	SURFACE PENETRATES	AMT PENETRATION
MOUNTAIN SW RUNWAY 2	200+	HORZ & CONICAL	40+ MAX



R/W 20 COMPOSITE APPROACH PROFILE

DESIGN_RC	
DRAWN_CAT	
CHECKED_CML	

BY	DATE	REVISIONS
	7-26-00	AS-BUILT

STATE OF ALASKA
 DEPARTMENT OF TRANSPORTATION AND PUBLIC FACILITIES
 NORTHERN REGION-DESIGN AND CONSTRUCTION-AVIATION
 APPROVED *Patricia D. Miller* DATE *7/26/00*
 PATRICIA D. MILLER, P.E. DESIGN GROUP CHIEF

AIRPORT LAYOUT PLAN APPROVED
 BY LETTER DATED: *11-29-02*
David Stebbins
 AIRPORTS DIVISION,
 ALASKAN REGION, AAL-620

ST. MICHAEL AIRPORT
 AIRSPACE AND
 COMPOSITE APPROACH PROFILES

SHEET
 3 OF 3