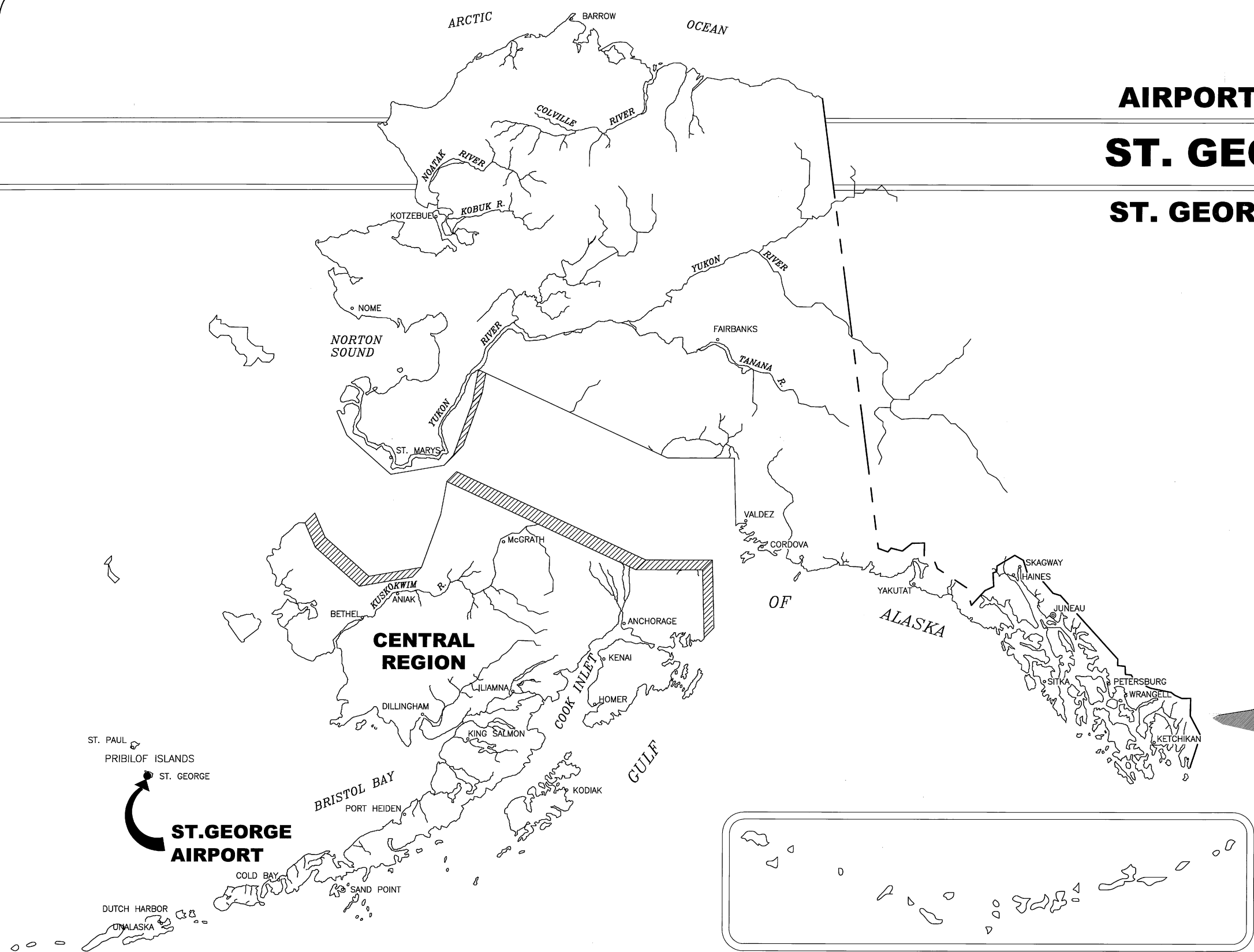
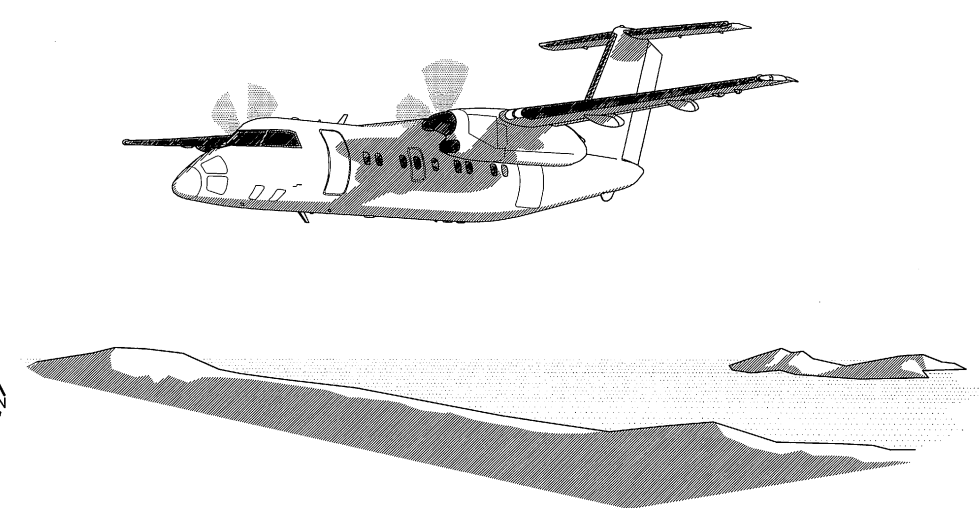


Date Plotted: 07/13/04
 Plot Ratio and Layout: 1:1, layout
 File: P:\projects\038183\design\ALP\dev-SIG.dwg
 Designed By: WPH
 Checked By: SGO
 Drawn By: GLB
 DOWI File No. 230-80A

AIRPORT LAYOUT PLAN FOR ST. GEORGE AIRPORT ST. GEORGE ISLAND, ALASKA 2004

DRAWING INDEX

- 1 - COVER SHEET AND INDEX
- 2 - VICINITY MAP AND DATA TABLES
- 3 - EXISTING PLAN AND PROFILE
- 4 - ULTIMATE PLAN AND PROFILE
- 5 - RUNWAY APPROACH SURFACES PLAN AND PROFILE
- 6 - F.A.R. PART 77 SURFACES
- 7 - PROPERTY PLAN
- 8 - NARRATIVE REPORT



ST. PAUL
PRIBILOF ISLANDS
ST. GEORGE

ST. GEORGE AIRPORT

SPONSORED BY
STATE OF ALASKA
DEPARTMENT OF TRANSPORTATION
AND PUBLIC FACILITIES
CENTRAL REGION

CONCUR *Steven R. Horn* **DATE** 8/9/04
STEVEN R. HORN, P.E. **CONSTRUCTION & OPERATIONS DIRECTOR**

APPROVED *Robert A. Campbell* **DATE** 8-9-04
ROBERT A. CAMPBELL, P.E. **REGIONAL PRECONSTRUCTION ENGINEER**

AIRPORT LAYOUT PLAN CONDITIONAL APPROVAL
 SUBJECT TO ALP APPROVAL LETTER DATED 9/27/04
 By: *Robert A. Campbell* DATE: 9/27/04
 FAA AIRPORTS DIVISION
 ALASKAN REGION, AAL-600

F.A.A. AIRSPACE REVIEW NUMBER:
03-AAL-175-NRA

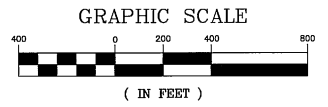
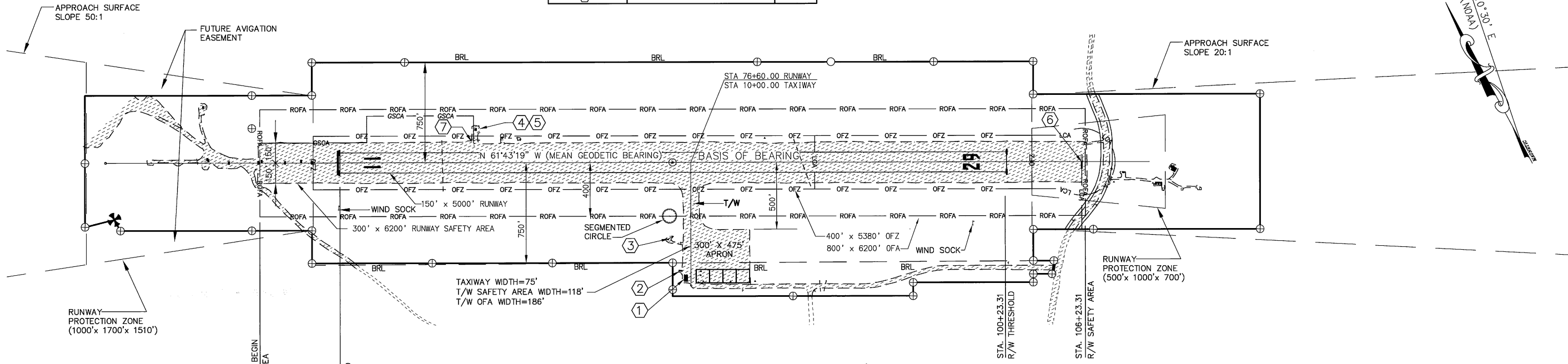
ST GEORGE AIRPORT
AIRPORT LAYOUT PLAN

SHEET 1 OF 8

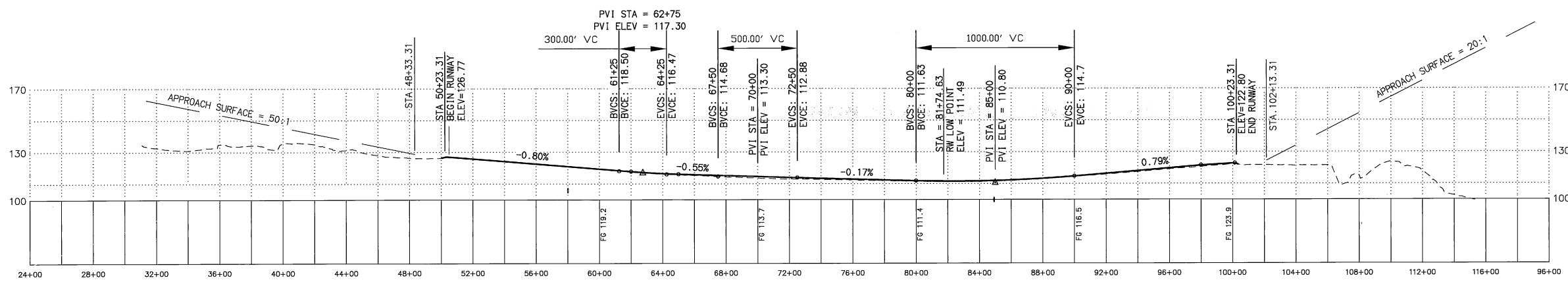
Date Plotted: 07/13/04
 Plot Ratio and Layout: 1:1
 File: P:\Projects\558122\Design\ALP\plan-gbprc.dwg
 Designed By: WPH
 Checked By: STD
 Drawn By: GLB
 DWG File No. 230-80C

BUILDING DATA TABLE		
BUILDING No.	DISCRIPTION	ELEV.
①	OLD SRE BUILDING	132
②	CONEX	117
③	ASOS BUILDING	111
④	GLIDE SLOPE BUILDING	120
⑤	ANTENNA, GLIDE SLOPE	145
⑥	LOCALIZER ANTENNA	126
⑦	PAPI	120

NOTES:
 1. NO OFZ OBJECT PENETRATIONS.
 2. TERRAIN PENETRATES THE 20:1 THRESHOLD SITING SURFACE FOR RUNWAY 11. TERRAIN PENETRATION BEGINS APPROXIMATELY 250 FEET NORTH OF RUNWAY 11 THRESHOLD AND BECOMES 10 FEET HIGHER THAN THE RUNWAY CENTERLINE 400 FEET NORTH OF THE THRESHOLD.
 3. THERE ARE NO PENETRATIONS OF THE THRESHOLD SITING SURFACE FOR RUNWAY 29.



PLAN



PROFILE

AIRPORT LAYOUT PLAN CONDITIONAL APPROVAL
 SUBJECT TO ALP APPROVAL LETTER DATED 9/22/04
 By: *[Signature]* DATE: 9/22/04
 FAA, AIRPORTS DIVISION
 ALASKA REGION, AAL-600
 F.A.A. AIRSPACE REVIEW NUMBER: 03-AAL-175-NRA

BY	DATE	REVISIONS

STATE OF ALASKA
**DEPARTMENT OF TRANSPORTATION
 AND PUBLIC FACILITIES**
 CENTRAL REGION
 APPROVED: *[Signature]*
 STEPHEN M. RYAN, P.E. DESIGN SECTION CHIEF
 APPROVED: *[Signature]*
 HARVEY M. DOUTHIT, P.E. PROJECT MANAGER

DATE 7/13/04
 DESIGN WPH
 DRAWN GLB
 CHECKED

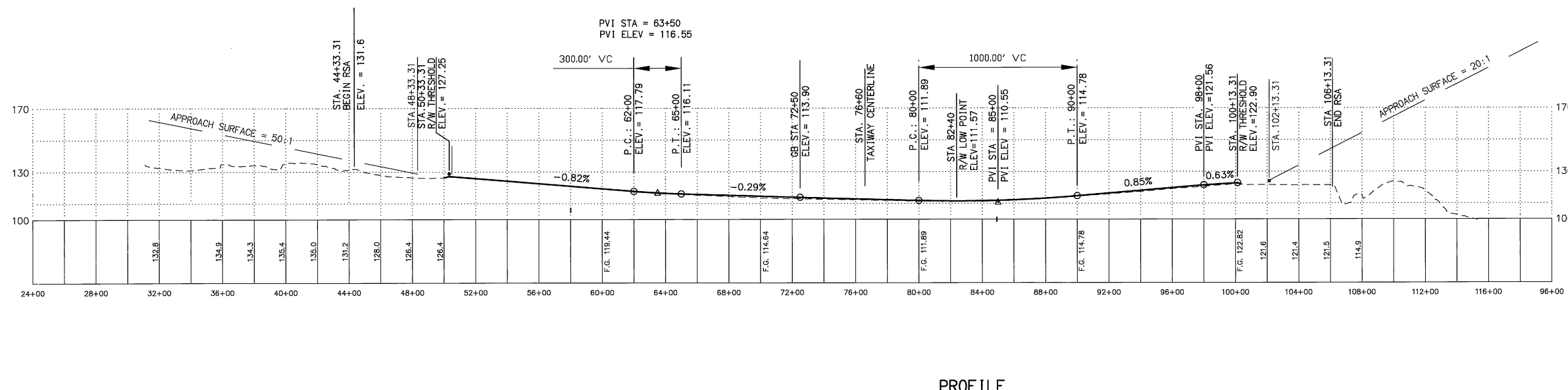
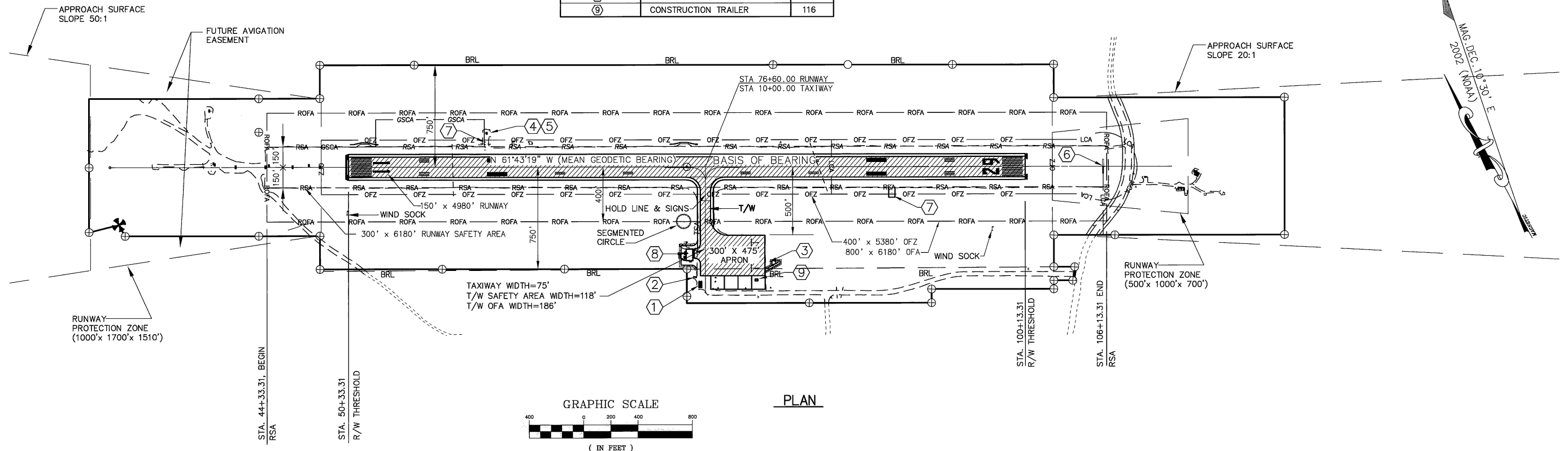
ST. GEORGE AIRPORT
 AIRPORT LAYOUT PLAN
 RUNWAY 11-29
 EXISTING PLAN AND PROFILE

SHEET
 3
 OF
 8

Date Plotted: 07/13/04
 Plot Ratio and Layout: 1=1, layout=
 File: P:\Projects\058182\Design\ALP\plan-appro.dwg
 Designed By: WPH
 Checked By: SCO
 Drawn By: GLB
 DWG File No: 230-800

BUILDING DATA TABLE		
BUILDING No.	DISCRPTION	ELEV.
①	OLD SRE BUILDING	132
②	CONEX	117
③	ASOS BUILDING	111
④	GLIDE SLOPE BUILDING	120
⑤	ANTENNA, GLIDE SLOPE	145
⑥	LOCALIZER ANTENNA	126
⑦	PAPI	120
⑧	NEW SRE BUILDING	135
⑨	CONSTRUCTION TRAILER	116

NOTES:
 1. NO OFZ OBJECT PENETRATIONS.
 2. TERRAIN PENETRATES THE 20:1 THRESHOLD SITING SURFACE FOR RUNWAY 11. TERRAIN PENETRATION BEGINS APPROXIMATELY 250 FEET NORTH OF RUNWAY 11 THRESHOLD AND BECOMES 10 FEET HIGHER THAN THE RUNWAY CENTERLINE 400 FEET NORTH OF THE THRESHOLD.
 3. THERE ARE NO PENETRATIONS OF THE THRESHOLD SITING SURFACE FOR RUNWAY 29.



AIRPORT LAYOUT PLAN CONDITIONAL APPROVAL
 SUBJECT TO ALP APPROVAL LETTER DATED 9/27/04
 By: *[Signature]* DATE: 9/27/04
 FAA, AIRPORTS DIVISION
 ALASKA REGION, AAL-600
 F.A.A. AIRSPACE REVIEW NUMBER: 03-AAL-175-NRA

BY	DATE	REVISIONS

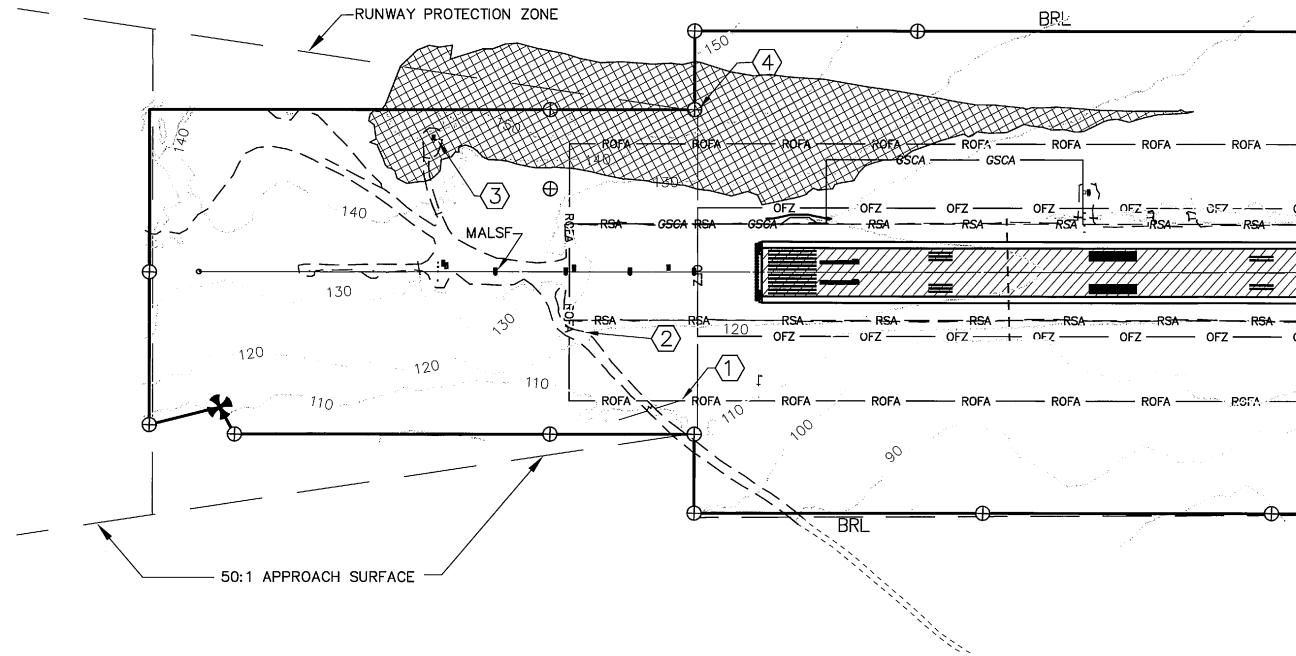
STATE OF ALASKA
DEPARTMENT OF TRANSPORTATION AND PUBLIC FACILITIES
 CENTRAL REGION
 APPROVED: *[Signature]* DESIGN SECTION CHIEF
 STEPHEN M. RYAN, P.E.
 APPROVED: *[Signature]* PROJECT MANAGER
 HARVEY M. DOUTHIT, P.E.

DATE: 7/13/04
 DESIGN: WPH
 DRAWN: GLB
 CHECKED:

ST. GEORGE AIRPORT
 AIRPORT LAYOUT PLAN
 RUNWAY 11-29
 ULTIMATE PLAN AND PROFILE

SHEET
 4
 OF
 8

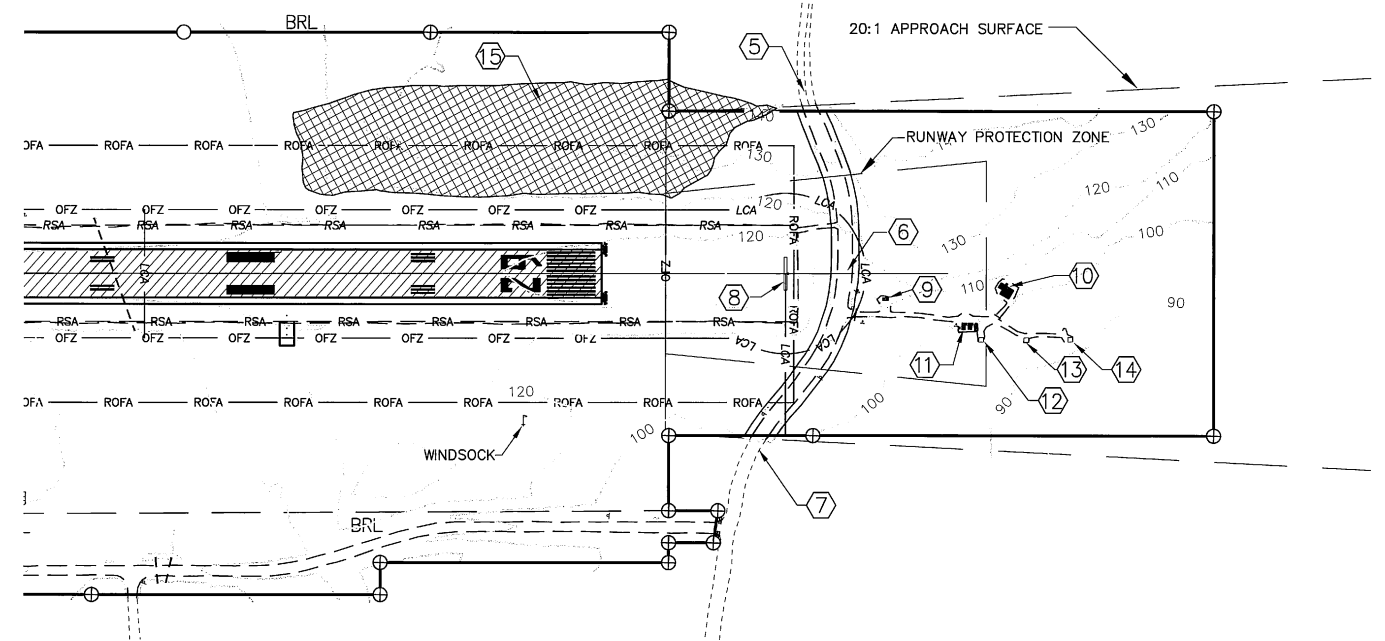
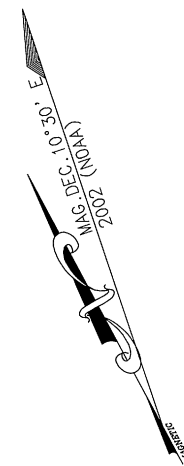
Date Plotted: 07/13/04
 Plot Ratio and Layout: 1"=1', layout=
 File: P:\Projects\058182\Design\ALP\plan-appro.dwg
 DWL File No. 230-80E
 Designed By: WPH
 Checked By: SGO
 Drawn By: GLB



RUNWAY 11 INNER APPROACH SURFACE DATA

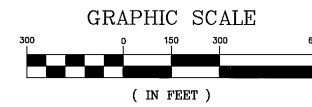
No.	STATION	OFFSET	OBJECT	OBJECT ELEVATION	PART 77 ELEVATION	VERTICAL CLEARANCE	AMOUNT OF PENETRATION	DISPOSITION
1	48+00	400' RT	FENCE TOP	120'	127.8'	7.8'	NONE	N/A
2	44+00	180' RT	ROAD	127'	135.9'	8.9'	6.1'	INSTALL GATE
3	40+10	410' LT	MALSF SHELTER	153'±	143.7'		10'±	INSTALL OBSTRUCTION LIGHT
4	38+00 to 63+50	200-700' LT	TERRAIN	143'	118'-155'		16'±	NONE

NOTE:
 OBSTRUCTION CLEARANCE SLOPE IS > 29:1 TO CLEAR HIGHEST TERRAIN
 APPROX 17,000 FT FROM THRESHOLD.

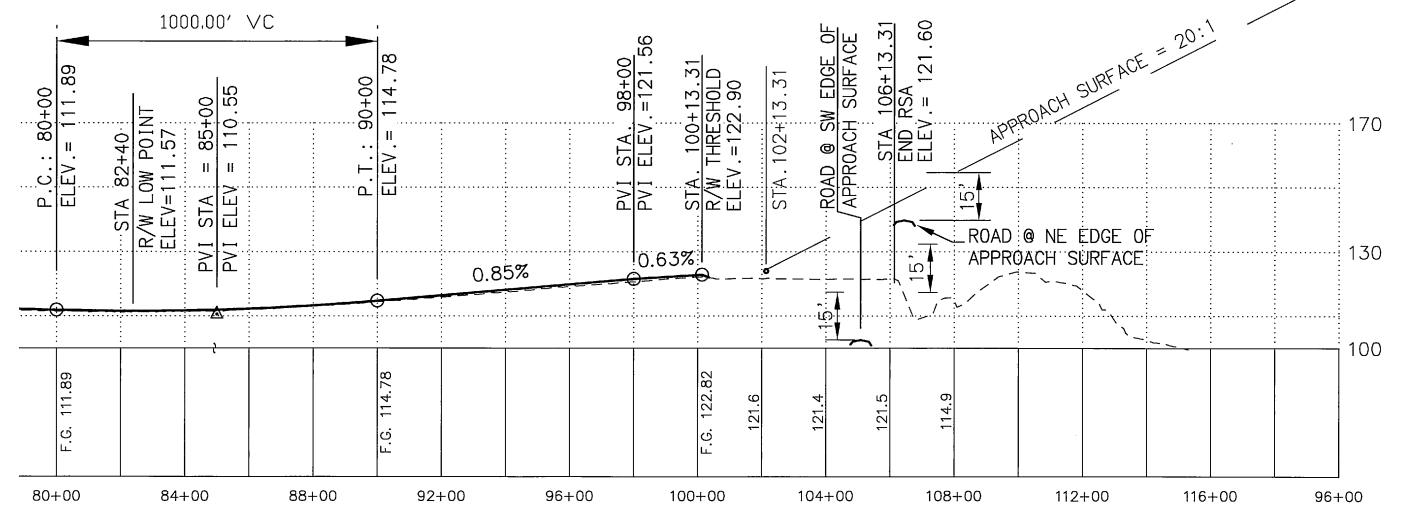
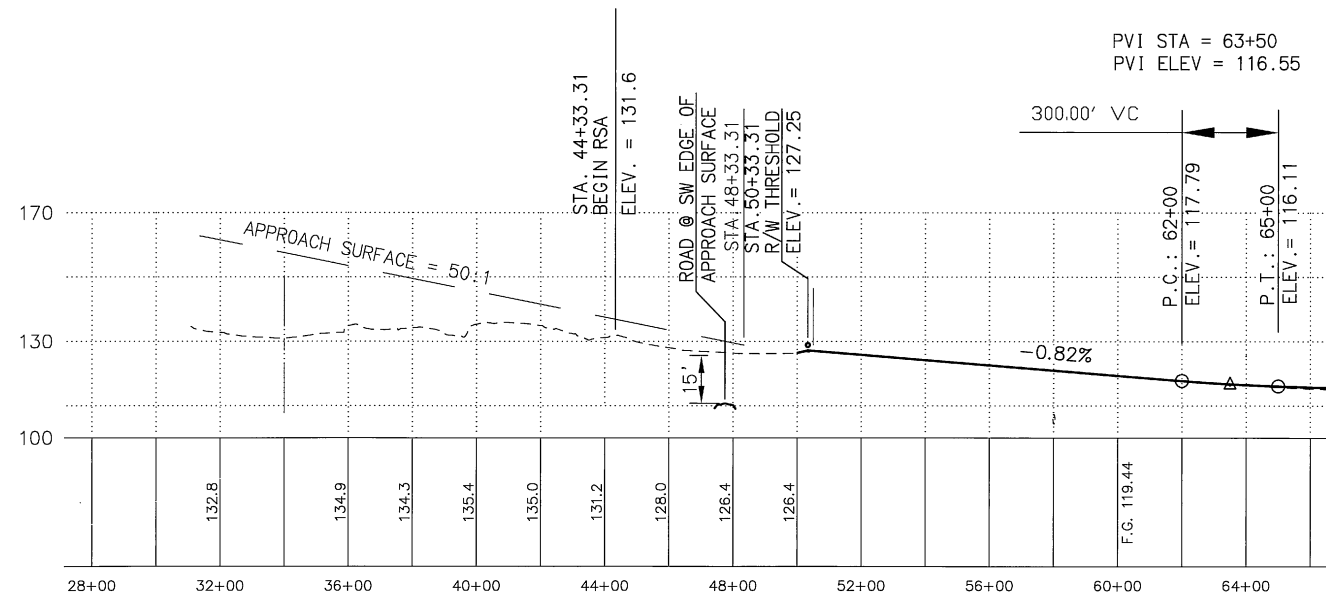


RUNWAY 29 INNER APPROACH SURFACE DATA

No.	STATION	OFFSET	OBJECT	OBJECT ELEVATION	PART 77 ELEVATION	VERTICAL CLEARANCE	AMOUNT OF PENETRATION	DISPOSITION
5	106+60	550' LT	ROAD	141'	145.6'	4.6'	10.7'	INSTALL WARNING SIGNS
6	107+70	0	ROAD	115'	150'	35'	NONE	N/A
7	104+70	550' RT	ROAD	98'	135'	37'	NONE	N/A
8	105+90	0	LOCALIZER ANTENNA	126'	141'		NONE	N/A
9	109+00	80' RT	LOCALIZER BLDG	127'	156'		NONE	N/A
10	112+75	60' RT	GENERATOR BLDG	131'	175'		NONE	N/A
11	111+60	165' RT	NDB BLDGS	115'	169'		NONE	N/A
12	112+00	200' RT	NDB ANTENNA	113'	172'		NONE	N/A
13	113+38.31	205' RT	NDB	108'	179'		NONE	N/A
14	114+75	200' RT	NDB ANTENNA	113'	186'		NONE	N/A
15	90+50 TO 104+50	230'-600' LT	TERRAIN	140'	115'-140'		17'±	NONE



NOTE:
 OBSTRUCTION CLEARANCE SLOPE IS > 13:1 TO CLEAR OBJECT NUMBER 5 BY 15 FT.



AIRPORT LAYOUT PLAN CONDITIONAL APPROVAL
 SUBJECT TO ALP APPROVAL LETTER DATED 9/27/04
 By: *John M. Smith* DATE: 9/27/04
 FAA, AIRPORTS DIVISION
 ALASKAN REGION, AAL-600
 F.A.A. AIRSPACE REVIEW NUMBER: 03-AAL-175-NRA

BY DATE REVISIONS

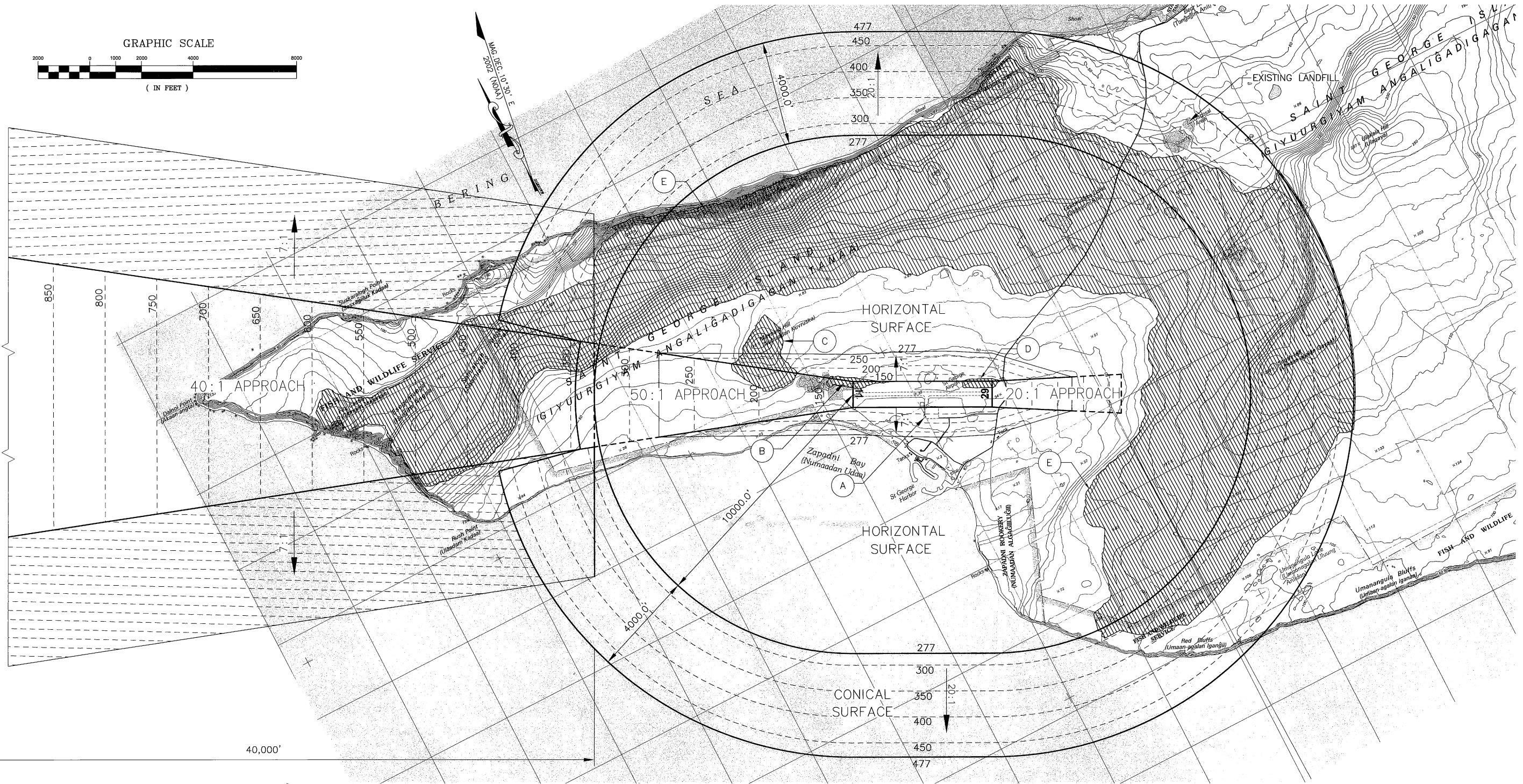
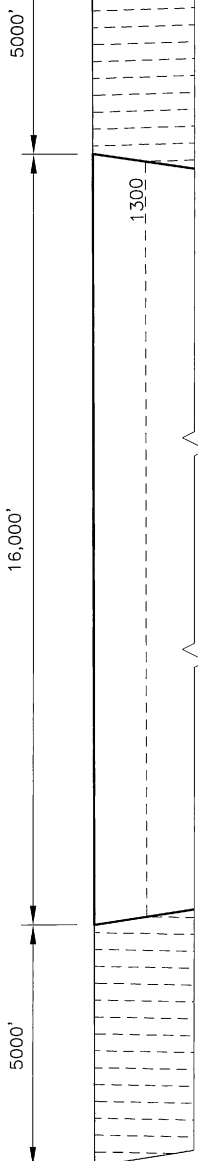
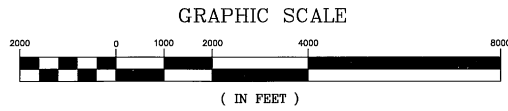
STATE OF ALASKA
**DEPARTMENT OF TRANSPORTATION
 AND PUBLIC FACILITIES**
 CENTRAL REGION

APPROVED: *Stephen M. Ryan* DESIGN SECTION CHIEF
 STEPHEN M. RYAN, P.E.
 APPROVED: *Harvey M. Douthitt* PROJECT MANAGER
 HARVEY M. DOUTHITT, P.E.

DATE 7/13/04
 DESIGN WPH
 DRAWN GLB
 CHECKED

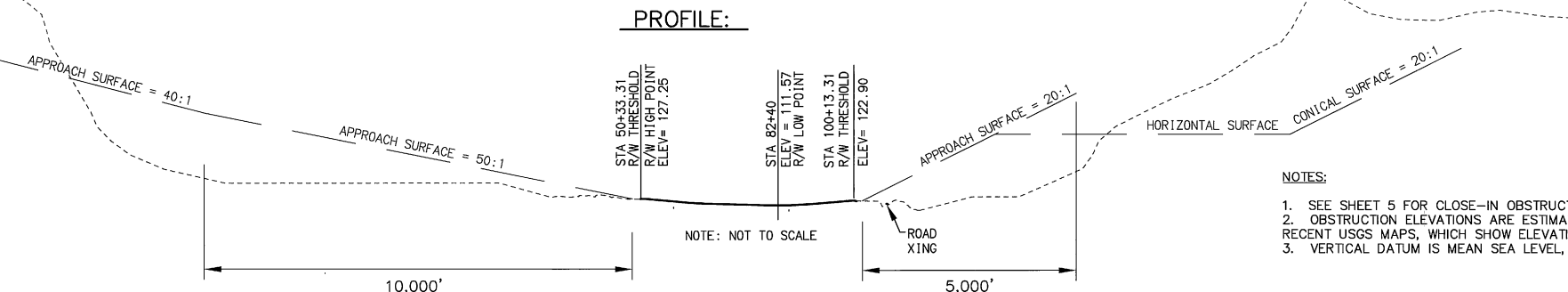
ST. GEORGE AIRPORT
 AIRPORT LAYOUT PLAN
 RUNWAY 18-36
 RUNWAY 11-29
 APPROACH SURFACES

SHEET
 5
 OF
 8



Date Plotted: 07/13/04
 Plot Ratio and Layout: 1=1, layout=
 File: P:\Projects\US8183\Design\ALP\SRG-part77.dwg
 DWG File No: 230-80F
 Designed By: WPH
 Checked By: SCD
 Drawn By: GLB

F.A.R. PART 77 IMAGINARY SURFACE OBSTRUCTION TABLE							
Obstruction ID	Description	Obstruction Elevation	Surface Penetrated	Part 77 Surface Elevation	Max. Amount of Penetration	Disposition	Stage
A	FUTURE SRE BUILDING	135'	TRANSITIONAL	126'	9'	LIGHTED	1
B	TERRAIN	143'	PRIMARY-APPROACH-TRANSITIONAL	118-155'	16'	NONE	NA
C	TERRAIN	379'	APPROACH-TRANSITIONAL-HORIZONTAL	170-277'	102'	NONE	NA
D	TERRAIN	140'	PRIMARY-APPROACH-TRANSITIONAL	115-140'	17'	NONE	NA
E	TERRAIN	982'	APPROACH-HORIZONTAL-CONICAL	277-594'	705'	NONE	NA



- NOTES:
- SEE SHEET 5 FOR CLOSE-IN OBSTRUCTIONS.
 - OBSTRUCTION ELEVATIONS ARE ESTIMATED FROM MOST RECENT USGS MAPS, WHICH SHOW ELEVATIONS IN METERS.
 - VERTICAL DATUM IS MEAN SEA LEVEL, MEASURED IN FEET.

AIRPORT LAYOUT PLAN CONDITIONAL APPROVAL
 SUBJECT TO ALP APPROVAL LETTER DATED 9/27/04

By: *[Signature]* DATE: 9/27/04

FAA, AIRPORTS DIVISION
 ALASKAN REGION, AAL-600

F.A.A. AIRSPACE REVIEW NUMBER: 03-AAL-175-NRA

BY	DATE	REVISIONS

STATE OF ALASKA
DEPARTMENT OF TRANSPORTATION AND PUBLIC FACILITIES
 CENTRAL REGION

APPROVED: *[Signature]* DESIGN SECTION CHIEF
 STEPHEN M. RYAN, P.E.

APPROVED: *[Signature]* PROJECT MANAGER
 HARVEY M. DOUTHIT, P.E.

DATE 7/13/04
 DESIGN WPH
 DRAWN GLB
 CHECKED

ST. GEORGE AIRPORT

AIRPORT LAYOUT PLAN

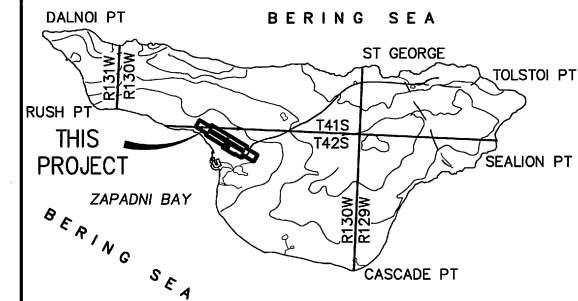
AIRPORT AIRSPACE

SHEET 6 OF 8

NOTES:

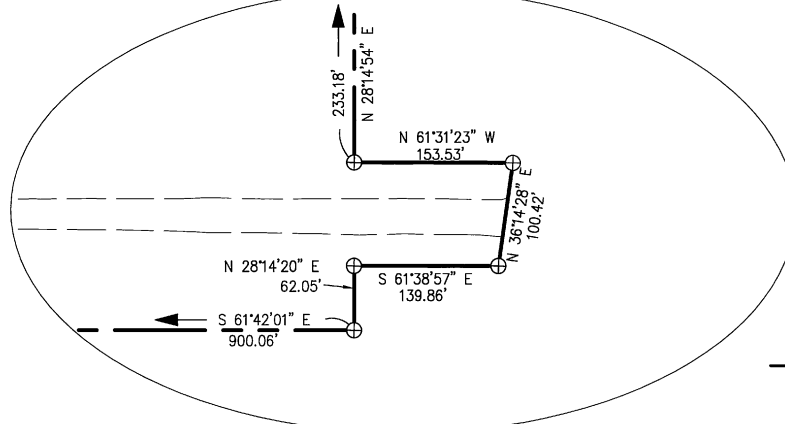
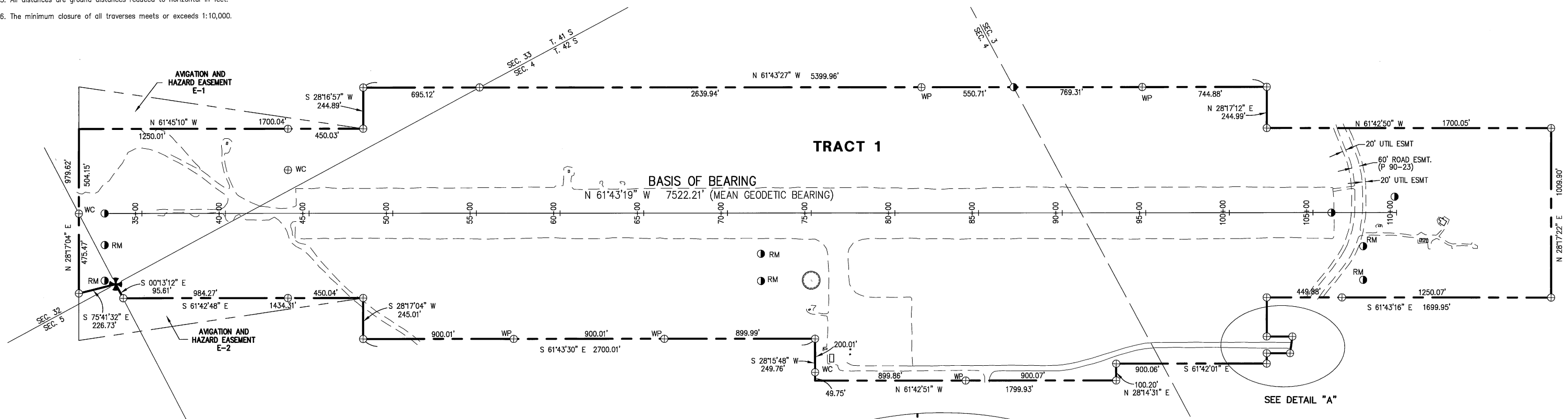
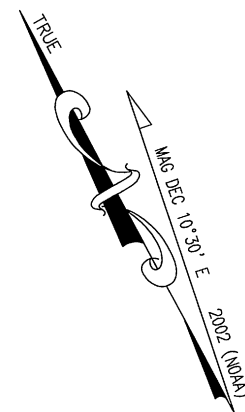
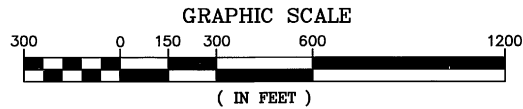
- Amended final judgement for the fee simple estate from St. George Tanaq Corporation and Aleut Corporation to the State of Alaska, Department of Transportation and Public Facilities, dated January 11, 1991. Acquired under case number 3AN-90-7226.
- The information shown hereon is based on field surveys performed by DOWL Engineers during November, 2002, and January, 2003.
- A local surface plane coordinate system based on a series of least squares adjusted traverses and Global Positioning System (GPS) observations performed by DOWL Engineers. NGS Station "STGE", a brass cap set in concrete, has coordinates 60,000N and 30,000E (US Feet). Point 503, a 6" spike set this survey, has coordinates 61,854.7407N 33,398.5131E. Point #502, a 2" alcap on 3/8" rebar found this survey, bears N61°43'19"W 7522.21', and has coordinates 65,418.3931N 26,774.0111E. Said line is the basis of bearing, NAD83 (1992).
- To convert the local coordinates to State Plane, Zone 9, NAD83(1992) US Feet, rotate coordinates clockwise 00°16'44" at "STGE", and translate the resulting coordinates using +878,140.3960 N and +1,677,894.1037 E. Scale the resulting coordinates using 0.99989659.
- The vertical datum is a local orthometric datum based on Mean Tide Level. To get to Mean Tide Level from Mean Lower Low Water, subtract 1.70 feet from any Mean Lower Low Water elevation. The elevations on the control points were determined by differential level loops performed by DOWL Engineers using Reference Points 108+00, 400.22RT (Point #635), a 2" aluminum cap on 3/8" rebar, 108+00, 200RT (Point #634), a 2" aluminum cap on 3/8" rebar, and 72+00, 405RT (Point #637), a 2" aluminum cap on 3/8" rebar. The elevations of these points were taken from the AKDOT&PF New St. George Airport Survey Control Diagram, Project No. 50716, and are adjusted by 1.70 feet. See the Vertical Control Table.
- All distances are ground distances reduced to horizontal in feet.
- The minimum closure of all traverses meets or exceeds 1:10,000.

PROPERTY STATUS							
PARCEL No.	INTEREST TO BE ACQUIRED	GRANTOR	GRANTEE	LARGER PARCEL AREA	NET TAKE	REMAIN	RECORDED DOCUMENT NO.
1	FEE	ST. GEORGE TANAQ CORP	STATE OF ALASKA, DOT	LARGE	278.22 AC	LARGE	BK. 032 PG 117
E-1	AVIGATION & HAZARD EASEMENT	ST. GEORGE TANAQ CORP	STATE OF ALASKA, DOT	LARGE	4.912 AC	LARGE	TO BE ACQUIRED
E-2	AVIGATION & HAZARD EASEMENT	ST. GEORGE TANAQ CORP	STATE OF ALASKA, DOT	LARGE	5.235 AC	LARGE	TO BE ACQUIRED



VICINITY MAP

SOURCE: USGS QUAD PRIBILOF ISLANDS, ALASKA
ALEUTIAN ISLANDS RECORDING DISTRICT

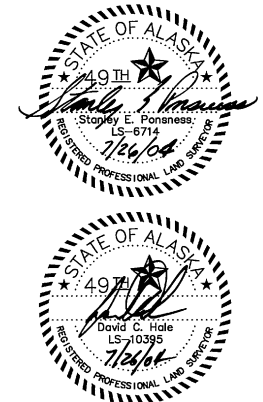


LEGEND

	FOUND B.L.M. MONUMENT
	FOUND PRIMARY MONUMENT
	FOUND SECONDARY MONUMENT
	PROPERTY BOUNDARY
	EASEMENT LINE
	RUNWAY CENTERLINE
	UNSURVEYED SECTION LINE
	SURVEYED TOWNSHIP LINE
RM	REFERENCE MONUMENT
WP	WITNESS POINT
WC	WITNESS CORNER

SURVEYOR'S CERTIFICATE
I HEREBY CERTIFY THAT I AM PROPERLY REGISTERED AND LICENSED TO PRACTICE LAND SURVEYING IN THE STATE OF ALASKA, AND THAT THIS DRAWING REPRESENTS A SURVEY MADE BY ME OR UNDER MY DIRECT SUPERVISION, AND THAT THE MONUMENTS SHOWN HEREON ACTUALLY EXIST AS DESCRIBED, AND THAT ALL DIMENSIONS AND OTHER DETAILS ARE CORRECT TO THE EXTENT SHOWN HEREON.

Stanley E. Ponnness LS-6714 DATE 7/26/04
David C. Hole LS-10395 DATE 7/26/04



DETAIL "A"
NTS

This Property Plan supercedes the plan dated August 7, 1989, and revised on January 14, 1991.

AIRPORT LAYOUT PLAN CONDITIONAL APPROVAL SUBJECT TO ALP APPROVAL LETTER DATED 9/22/04		
By: <i>[Signature]</i>	DATE: 9/22/04	
FAA, AIRPORTS DIVISION ALASKAN REGION, AAL-600		
F.A.A. AIRSPACE REVIEW NUMBER: 03-AAL-175-NRA		
BY	DATE	REVISIONS

STATE OF ALASKA
DEPARTMENT OF TRANSPORTATION AND PUBLIC FACILITIES
CENTRAL REGION

APPROVED: *[Signature]* DESIGN SECTION CHIEF
STEPHEN M. RYAN, P.E.

APPROVED: *[Signature]* PROJECT MANAGER
HARVEY M. DOUTHIT, P.E.

DATE 7/20/04
DESIGN _____
DRAWN MES
CHECKED _____

ST. GEORGE AIRPORT
AIRPORT LAYOUT PLAN
PROPERTY PLAN

SHEET
7
OF
8

Date Plotted: _____
 Plot Ratio and Layout: _____
 File: W:\Cad\2004\aviation\airports\central\St.George\Property_Plan.dwg
 Designed By: _____
 Checked By: _____
 Drawn By: _____